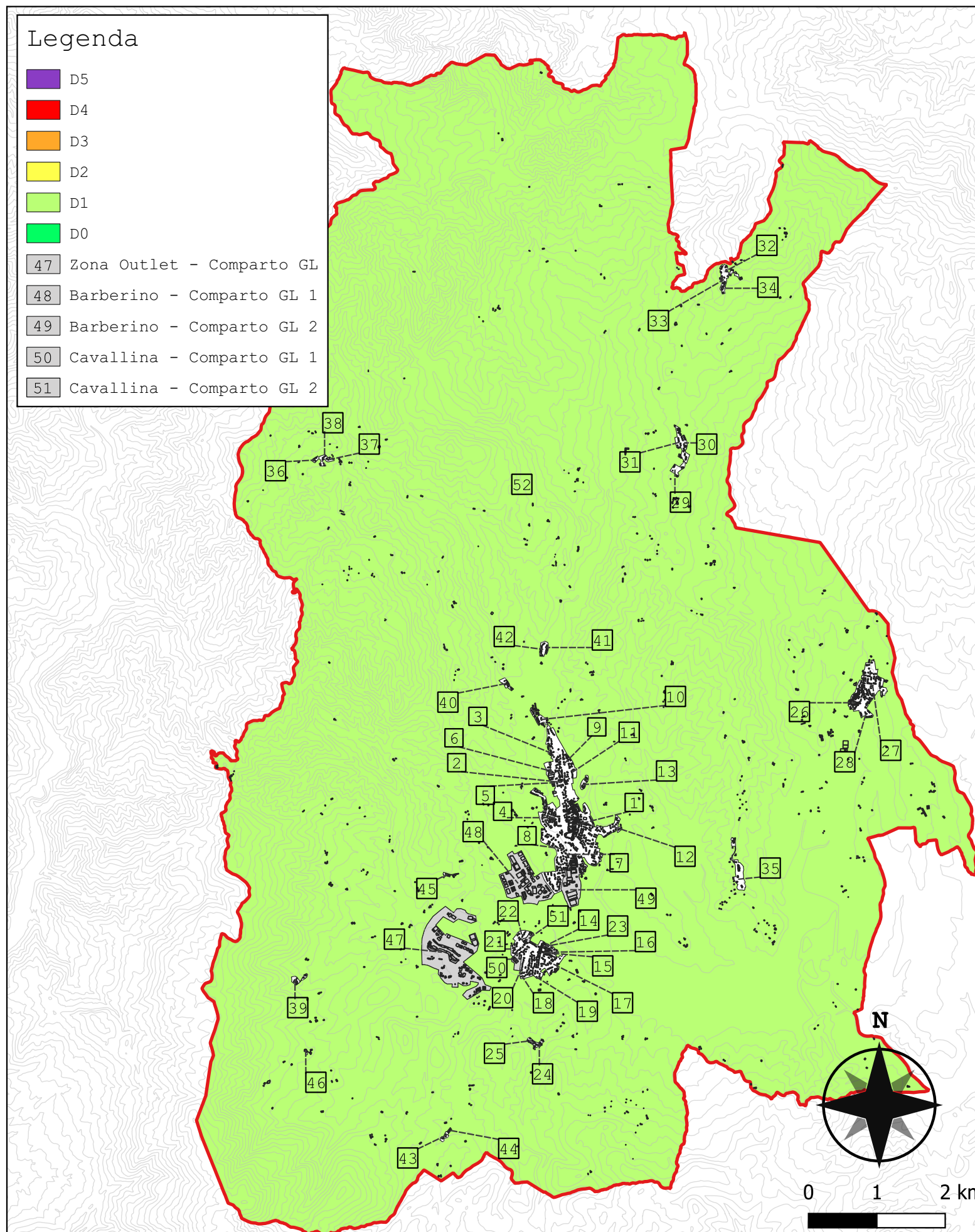


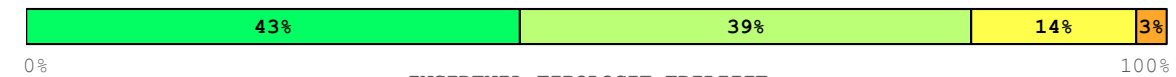
Legenda

- D5
- D4
- D3
- D2
- D1
- D0
- 47 Zona Outlet - Comparto GL
- 48 Barberino - Comparto GL 1
- 49 Barberino - Comparto GL 2
- 50 Cavallina - Comparto GL 1
- 51 Cavallina - Comparto GL 2

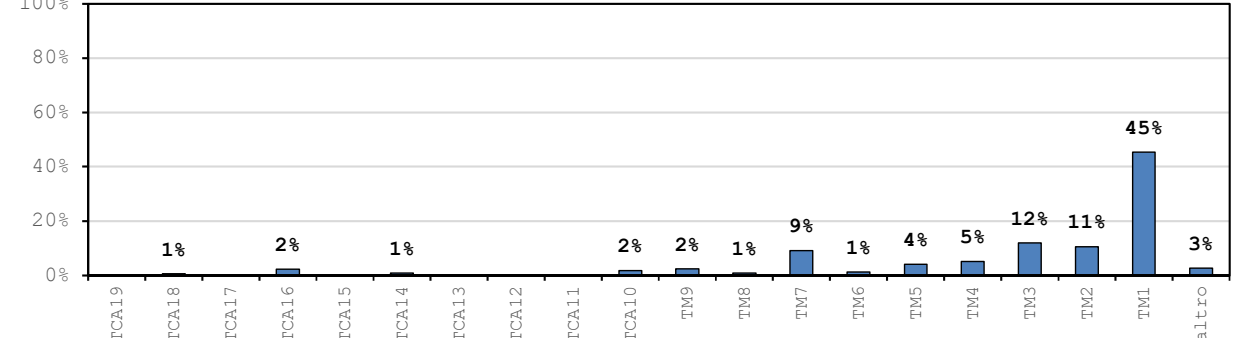


Comparto 52		Zona rurale					$I_{EMS-98} = 6$ $PGA = 0.060g$		
Incidenza vol. comparto a livello comunale 33.8%									
Tipologie	Vol. [m ³]	D _{medio}	D0	D1	D2	D3	D4	D5	
TM1	471 916	0.947	35%	41%	19%	4%	1%	0%	
TM2	110 505	1.302	22%	39%	27%	10%	2%	0%	
TM3	124 624	0.882	38%	41%	17%	4%	0%	0%	
TM4	53 351	1.092	29%	41%	23%	6%	1%	0%	
TM5	42 731	0.256	77%	21%	2%	0%	0%	0%	
TM6	12 868	0.447	63%	31%	6%	1%	0%	0%	
TM7	95 181	0.021	98%	2%	0%	0%	0%	0%	
TM8	9 414	0.139	87%	12%	1%	0%	0%	0%	
TM9	24 646	0.023	98%	2%	0%	0%	0%	0%	
TCA10	18 740	0.061	94%	6%	0%	0%	0%	0%	
TCA11	-	-	-	-	-	-	-	-	
TCA12	-	-	-	-	-	-	-	-	
TCA13	-	-	-	-	-	-	-	-	
TCA14	9 388	0.000	100%	0%	0%	0%	0%	0%	
TCA15	-	-	-	-	-	-	-	-	
TCA16	23 696	0.000	100%	0%	0%	0%	0%	0%	
TCA17	-	-	-	-	-	-	-	-	
TCA18	6 202	0.000	100%	0%	0%	0%	0%	0%	
TCA19	-	-	-	-	-	-	-	-	
altro	27 980	-	-	-	-	-	-	-	
tot.	1 038 684	0.773	43%	39%	14%	3%	0%	0%	

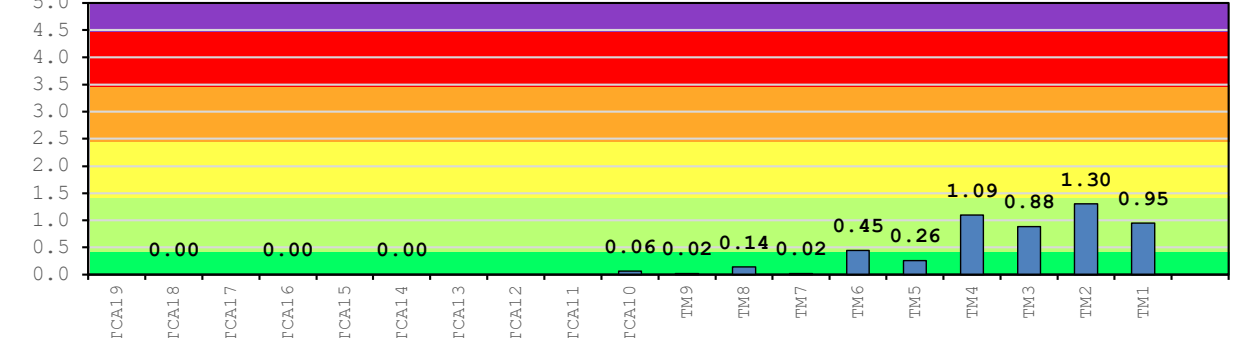
DISTRIBUZIONE DANNO SUL COMPARTO



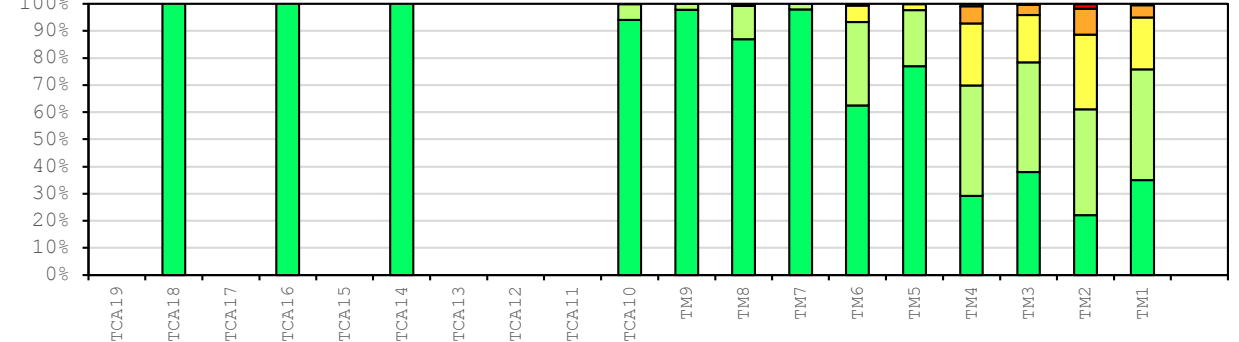
INCIDENZA TIPOLOGIE EDILIZIE



DANNO MEDIO TIPOLOGIE EDILIZIE



DISTRIBUZIONE DANNO SULLA TIPOLOGIA EDILIZIA



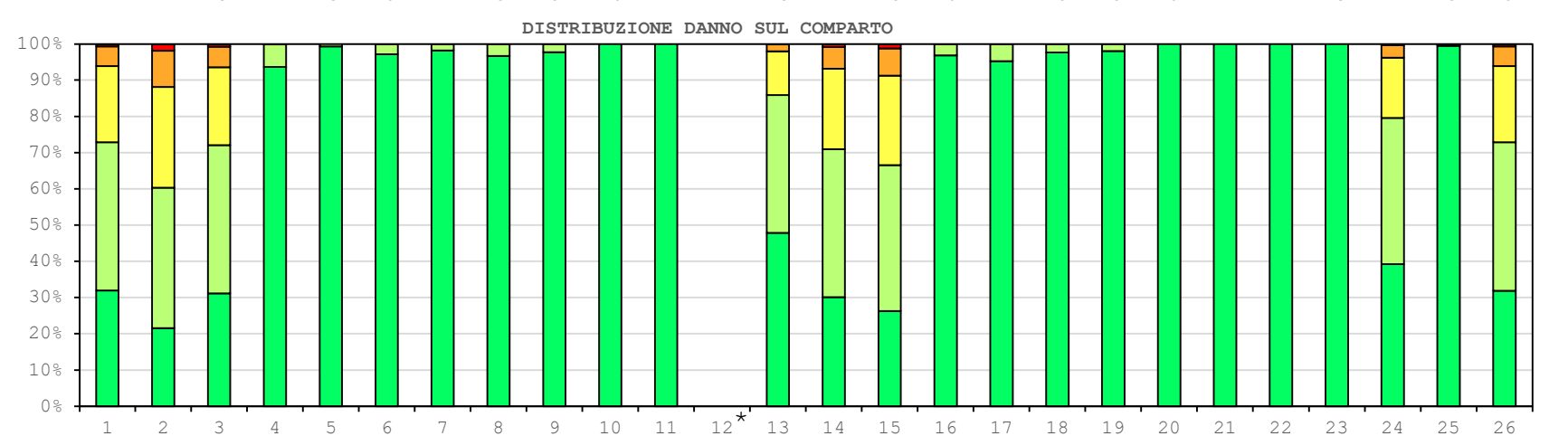
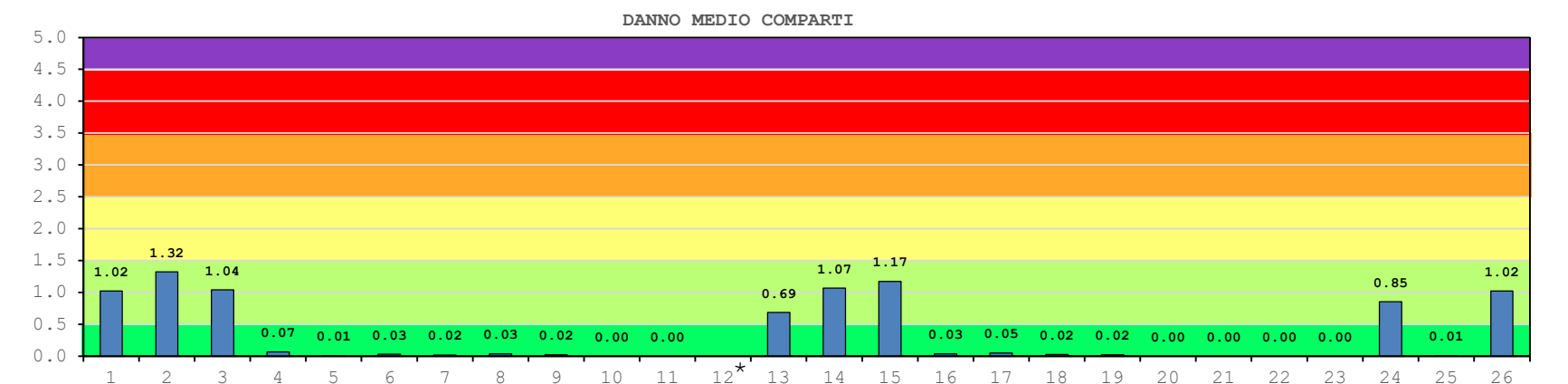
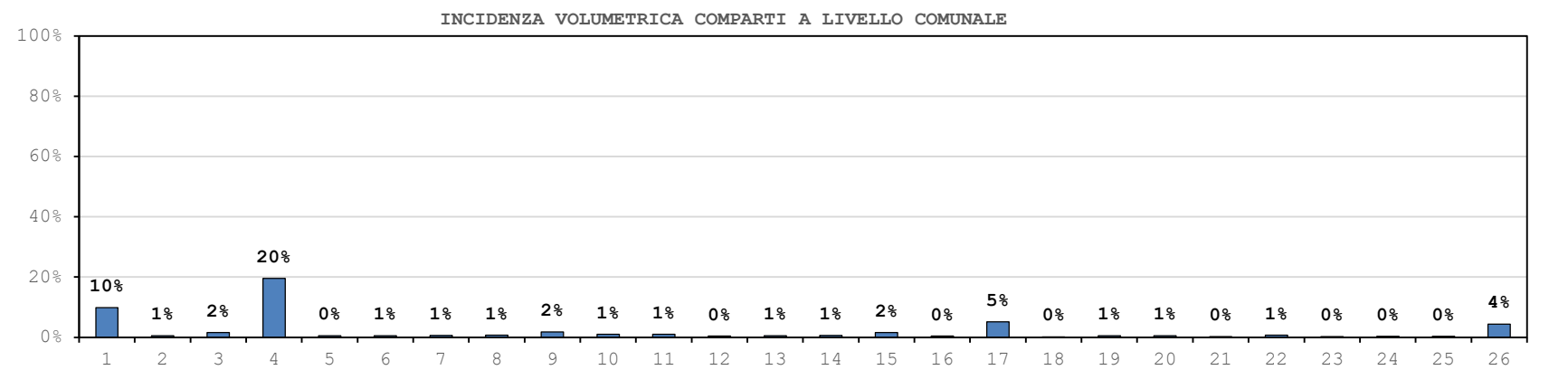
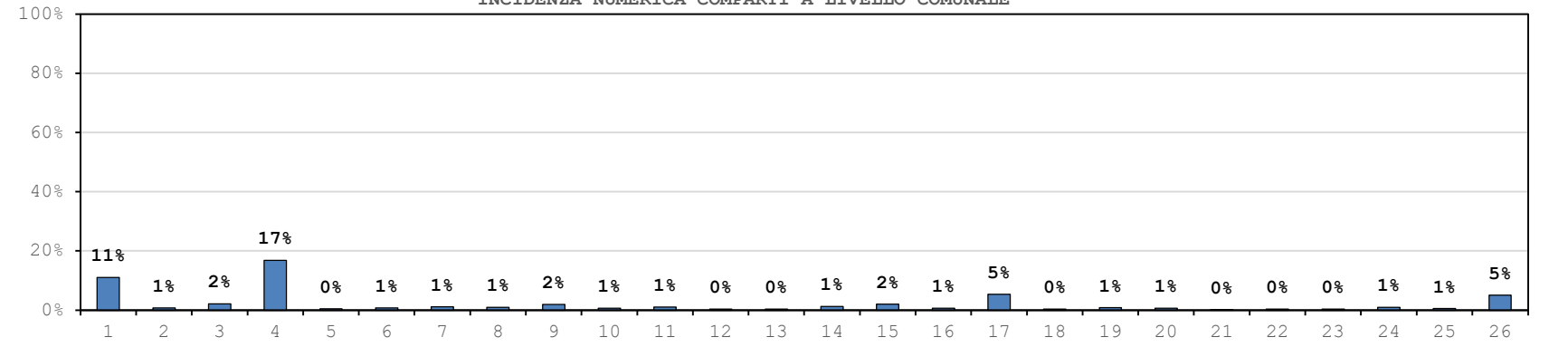
Comparti a livello comunale

$I_{EMS-98} = 6$ $PGA = 0.060g$

Comparto	Vol. [m ³]	D _{medio}	D0	D1	D2	D3	D4	D5
1	303 621	1.021	32%	41%	21%	5%	1%	0%
2	16 547	1.320	22%	39%	28%	10%	2%	0%
3	47 821	1.041	31%	41%	22%	6%	1%	0%
4	601 781	0.066	94%	6%	0%	0%	0%	0%
5	15 275	0.007	99%	1%	0%	0%	0%	0%
6	17 086	0.029	97%	3%	0%	0%	0%	0%
7	19 473	0.018	98%	2%	0%	0%	0%	0%
8	21 384	0.034	97%	3%	0%	0%	0%	0%
9	55 058	0.023	98%	2%	0%	0%	0%	0%
10	29 733	0.000	100%	0%	0%	0%	0%	0%
11	30 814	0.000	100%	0%	0%	0%	0%	0%
12	14 568							
13	17 069	0.685	48%	38%	12%	2%	0%	0%
14	18 085	1.067	30%	41%	22%	6%	1%	0%
15	49 251	1.172	26%	40%	25%	8%	1%	0%
16	13 794	0.032	97%	3%	0%	0%	0%	0%
17	157 797	0.049	95%	5%	0%	0%	0%	0%
18	3 521	0.024	98%	2%	0%	0%	0%	0%
19	16 918	0.020	98%	2%	0%	0%	0%	0%
20	15 482	0.000	100%	0%	0%	0%	0%	0%
21	7 541	0.000	100%	0%	0%	0%	0%	0%
22	21 161	0.000	100%	0%	0%	0%	0%	0%
23	8 012	0.000	100%	0%	0%	0%	0%	0%
24	10 901	0.853	39%	40%	17%	3%	0%	0%
25	9 033	0.006	99%	1%	0%	0%	0%	0%
26	133 014	1.022	32%	41%	21%	5%	1%	0%

* Comparto costituito da edifici in legno realizzati post 2018: DANNO D0

DISTRIBUZIONE DANNO SUL COMUNE



Comparti a livello comunale

$I_{EMS-98} = 6$ $PGA = 0.060g$

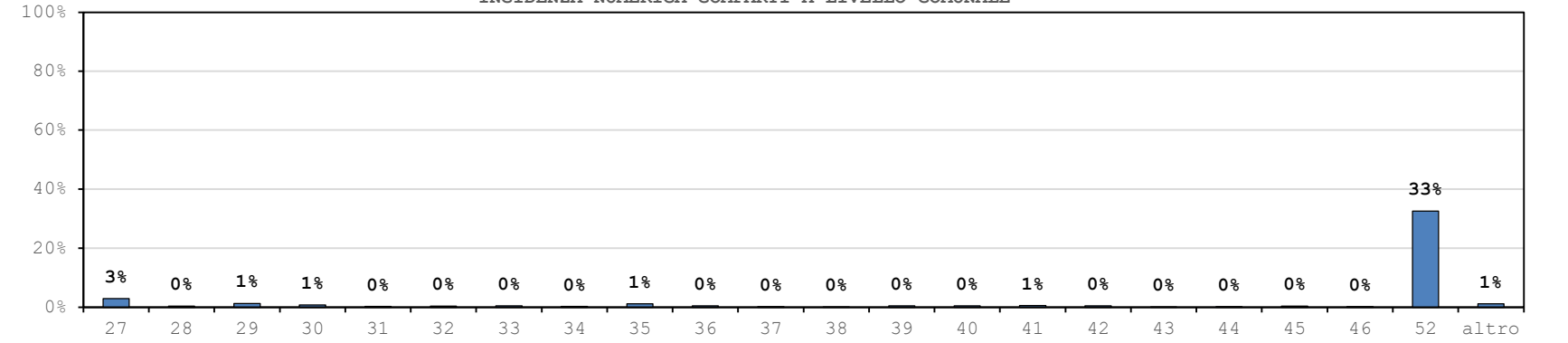
Comparto	Vol. [m ³]	D _{medio}	D0	D1	D2	D3	D4	D5
27	92 286	0.042	96%	4%	0%	0%	0%	0%
28	17 712	0.000	100%	0%	0%	0%	0%	0%
29	31 771	0.874	38%	41%	17%	4%	0%	0%
30	17 374	0.000	100%	0%	0%	0%	0%	0%
31	10 022	0.000	100%	0%	0%	0%	0%	0%
32	10 998	0.722	46%	39%	13%	2%	0%	0%
33	14 577	0.036	96%	4%	0%	0%	0%	0%
34	8 516	0.015	99%	1%	0%	0%	0%	0%
35	43 639	0.997	33%	41%	20%	5%	1%	0%
36	10 941	1.101	29%	41%	23%	6%	1%	0%
37	3 931	0.042	96%	4%	0%	0%	0%	0%
38	3 988	0.000	100%	0%	0%	0%	0%	0%
39	20 830	1.037	31%	41%	21%	6%	1%	0%
40	15 041	1.094	29%	41%	23%	6%	1%	0%
41	8 344	1.238	24%	40%	26%	9%	1%	0%
42	18 989	0.000	100%	0%	0%	0%	0%	0%
43	6 374	1.041	31%	41%	22%	6%	1%	0%
44	2 122							
45	11 750	1.216	25%	40%	26%	8%	1%	0%
46	6 245	1.028	32%	41%	21%	5%	1%	0%
52	1 038 684	0.773	43%	39%	14%	3%	0%	0%
altro	25 383							
tot	3 074 256	0.537	57%	34%	8%	1%	0%	0%

* Comparto costituito da edifici in legno realizzati post 2018: DANNO D0

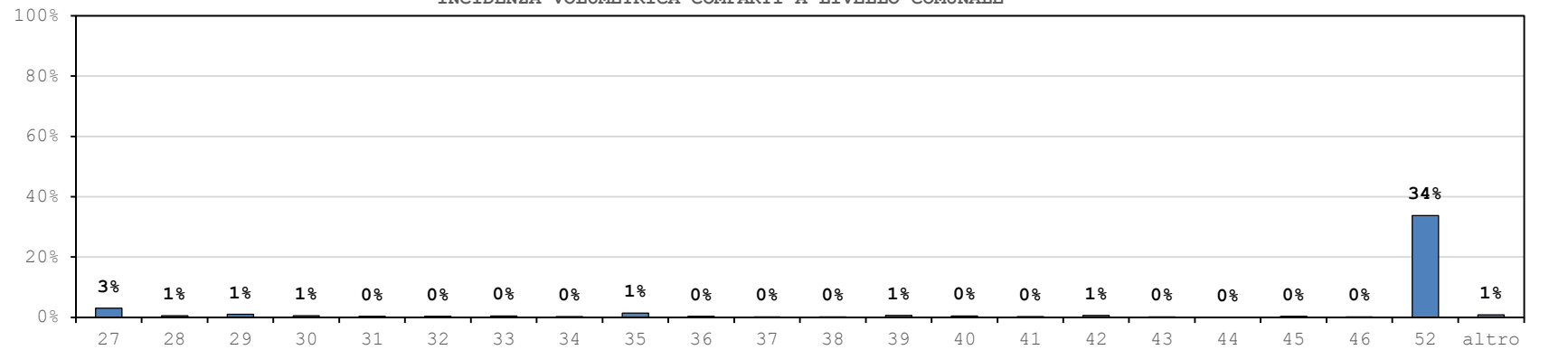
DISTRIBUZIONE DANNO SUL COMUNE



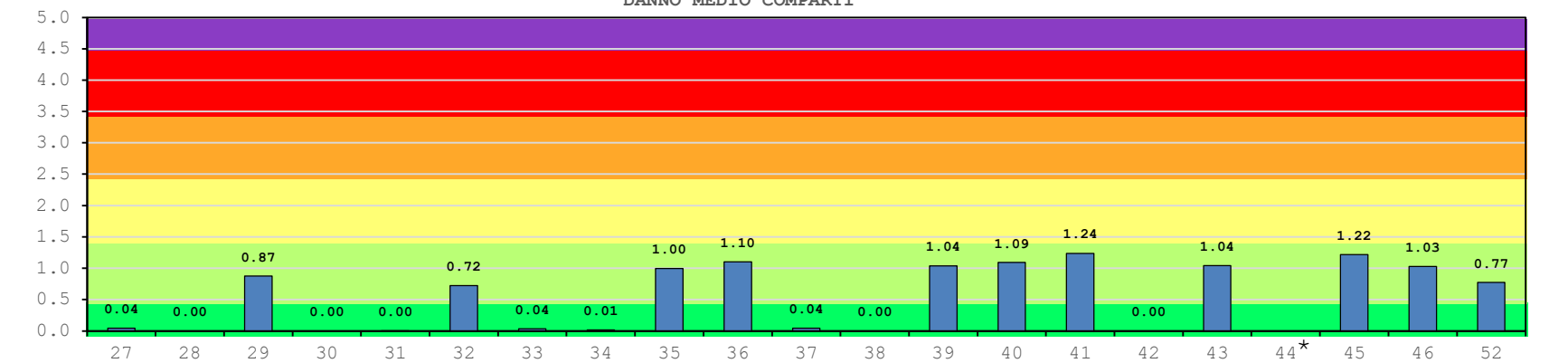
INCIDENZA NUMERICA COMPARTI A LIVELLO COMUNALE



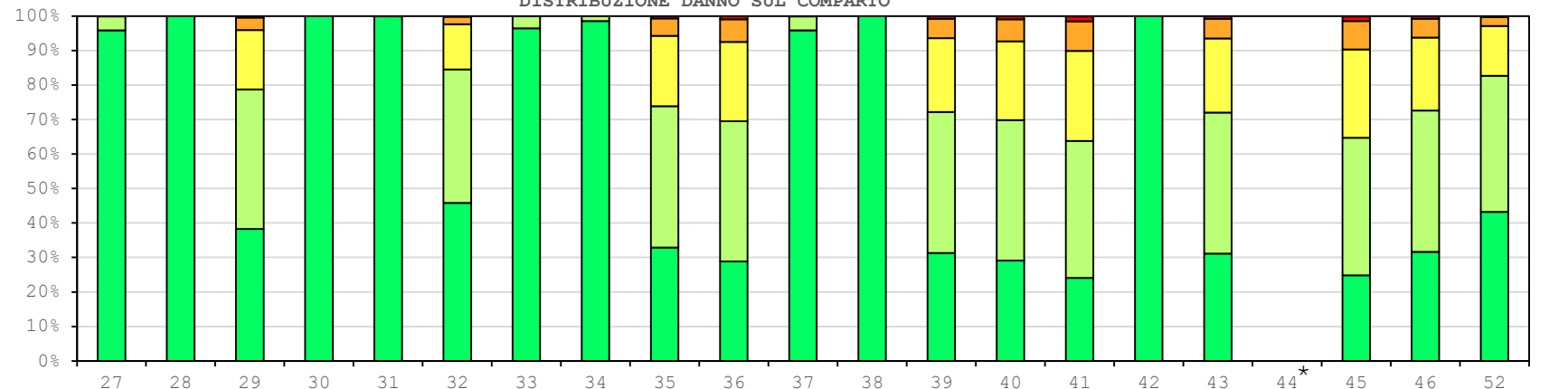
INCIDENZA VOLUMETRICA COMPARTI A LIVELLO COMUNALE

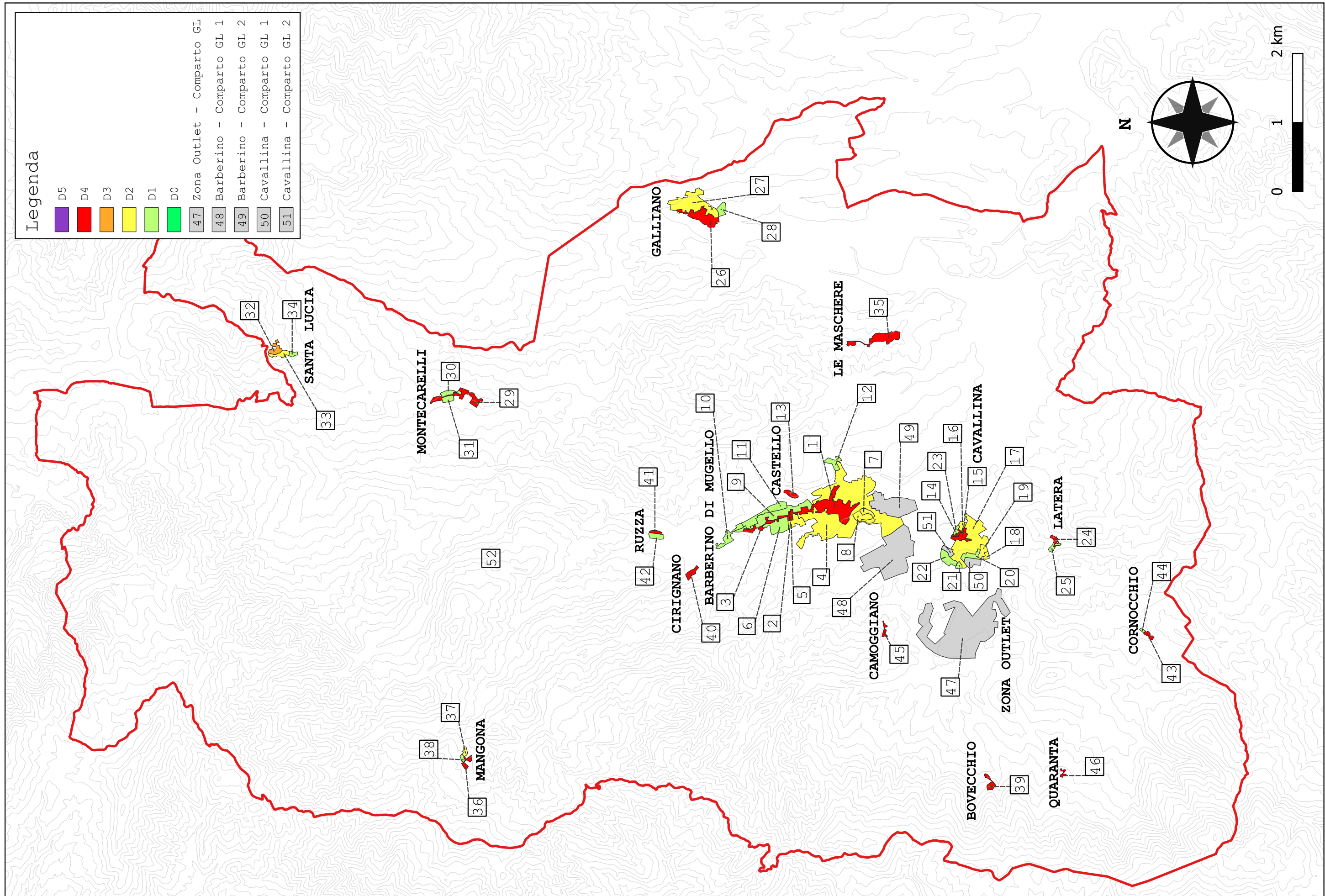


DANNO MEDIO COMPARTI



DISTRIBUZIONE DANNO SUL COMPARTO





Legenda

- D5
- D4
- D3
- D2
- D1
- D0
- Zona Outlet - Comparto GL
- Barberino - Comparto GL 1
- Barberino - Comparto GL 2
- Cavallina - Comparto GL 1
- Cavallina - Comparto GL 2



