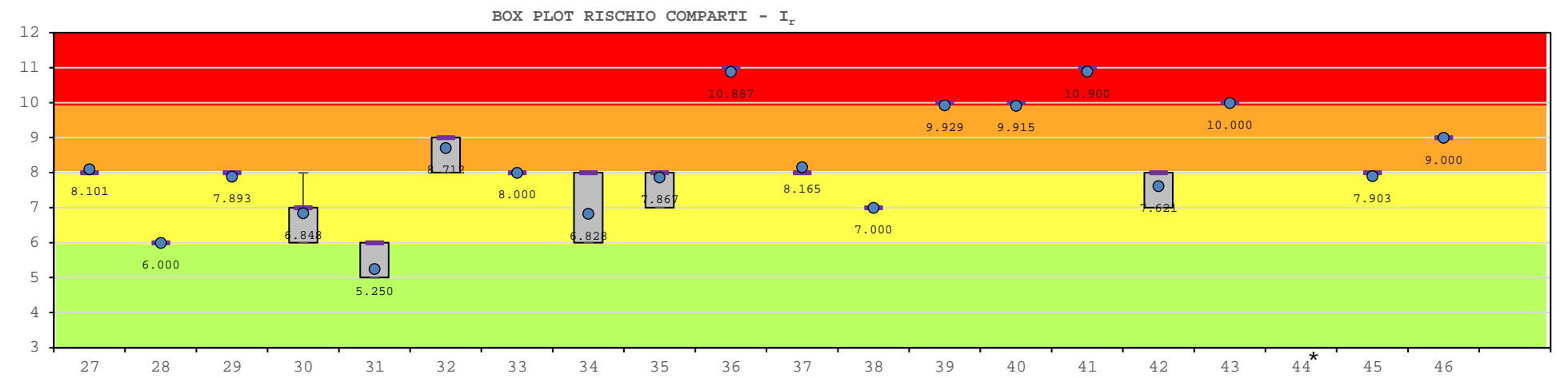
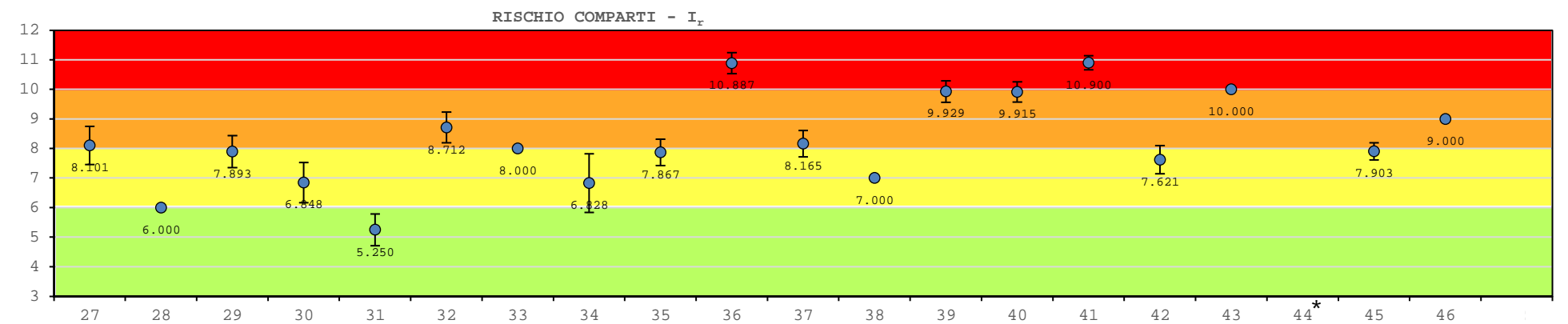
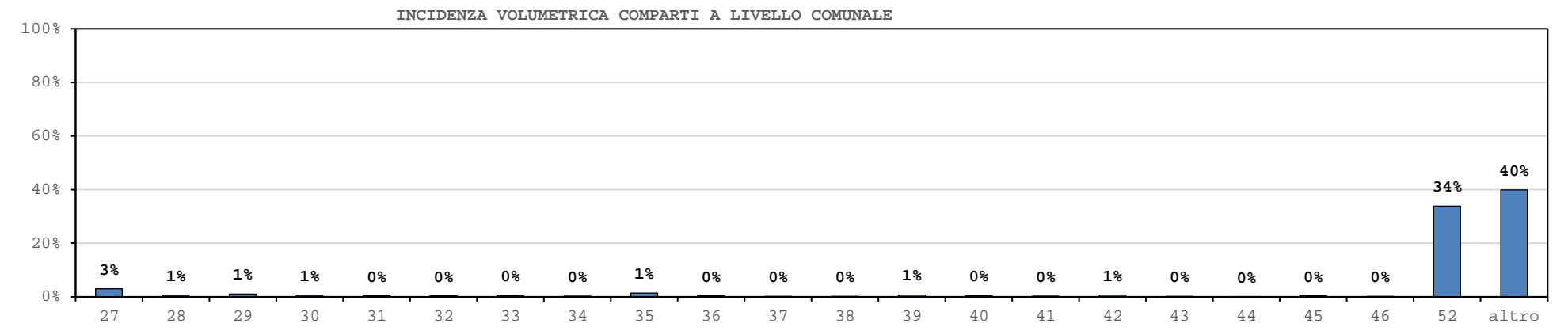
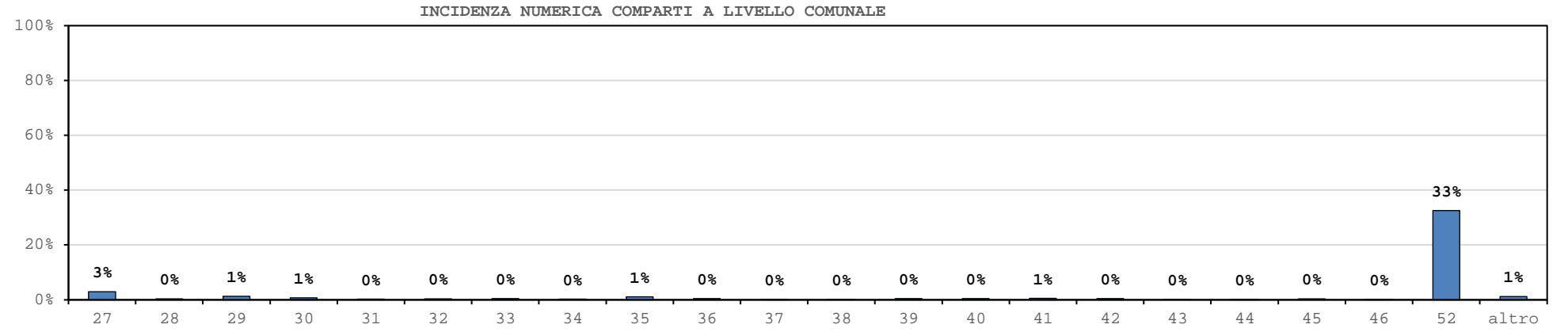
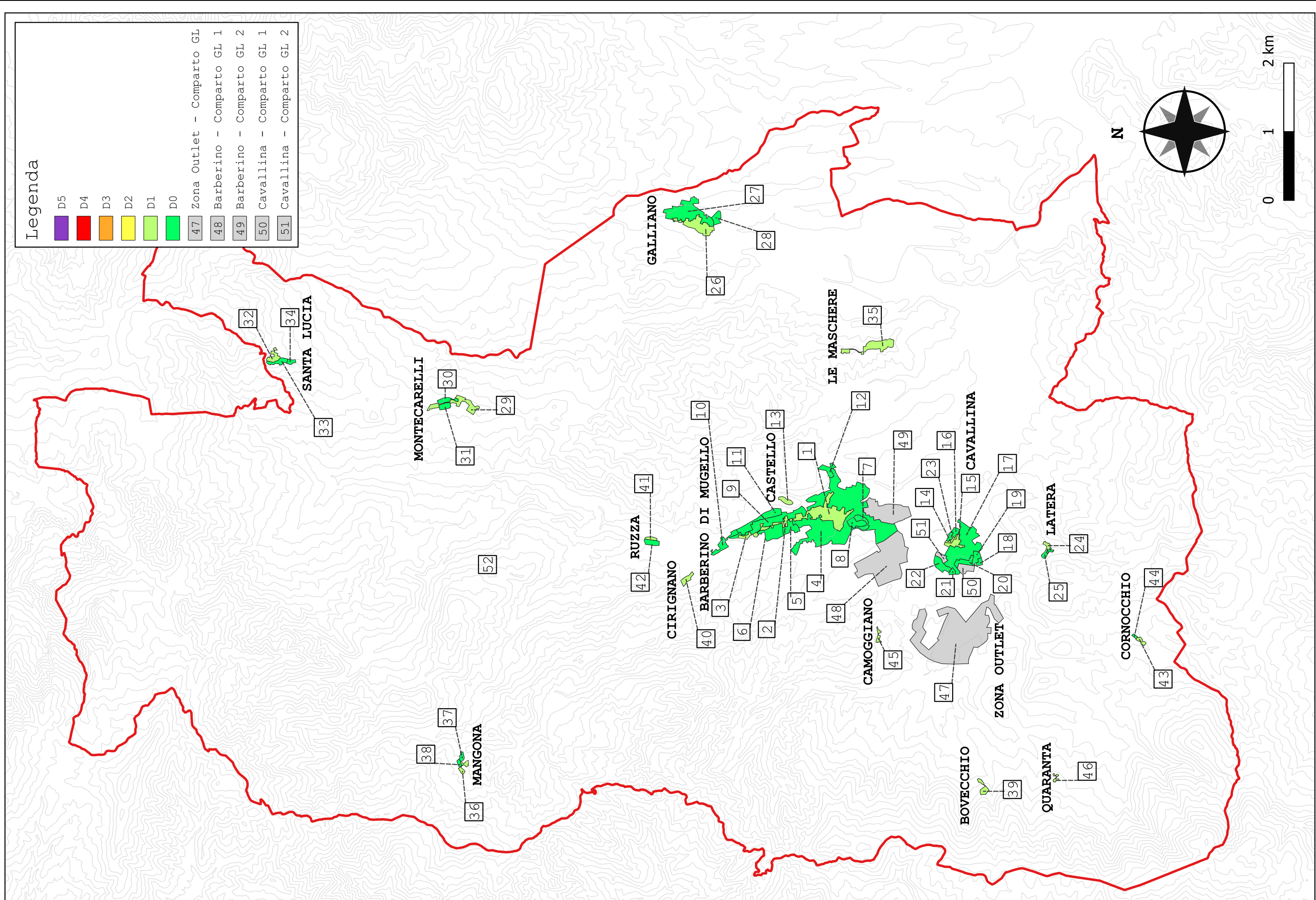


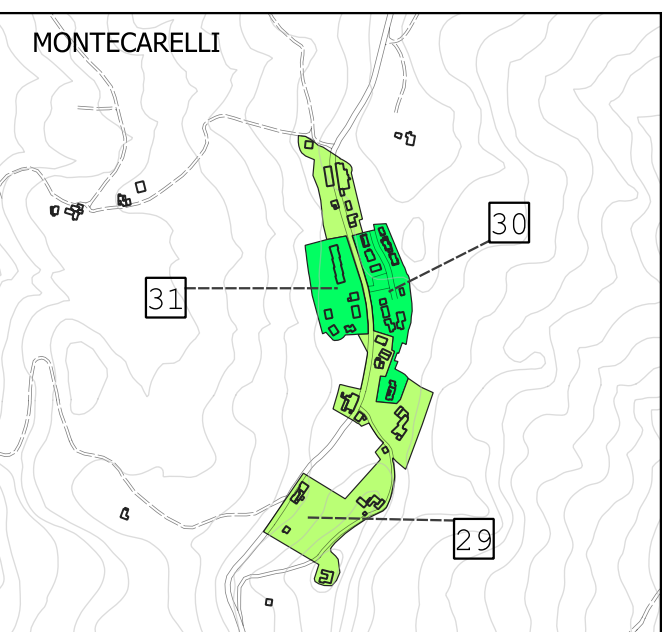
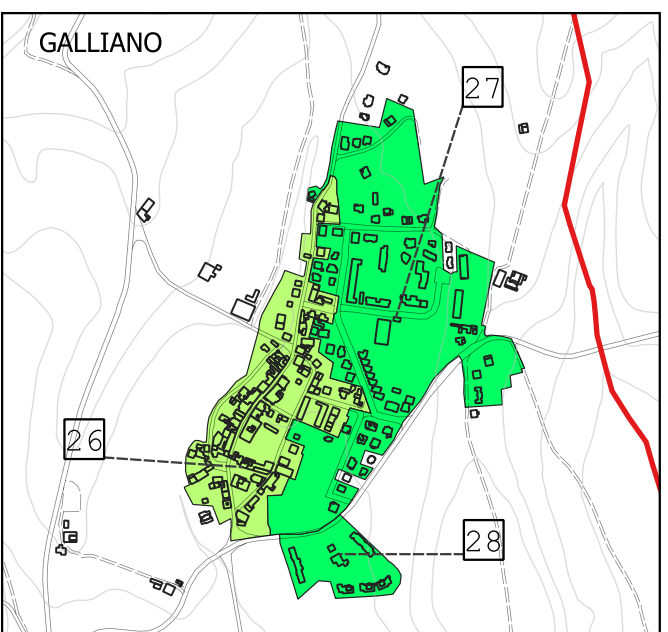
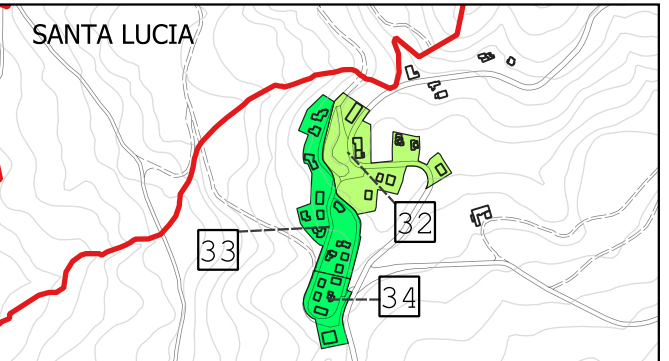
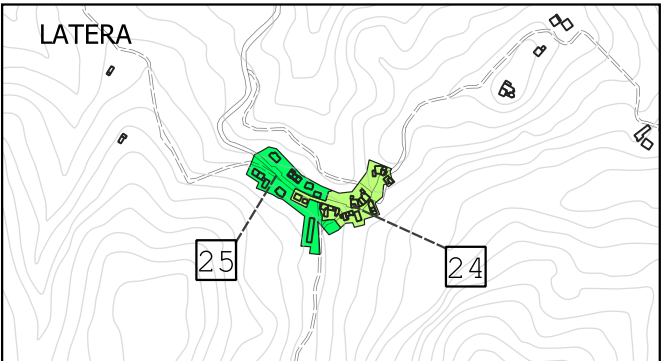
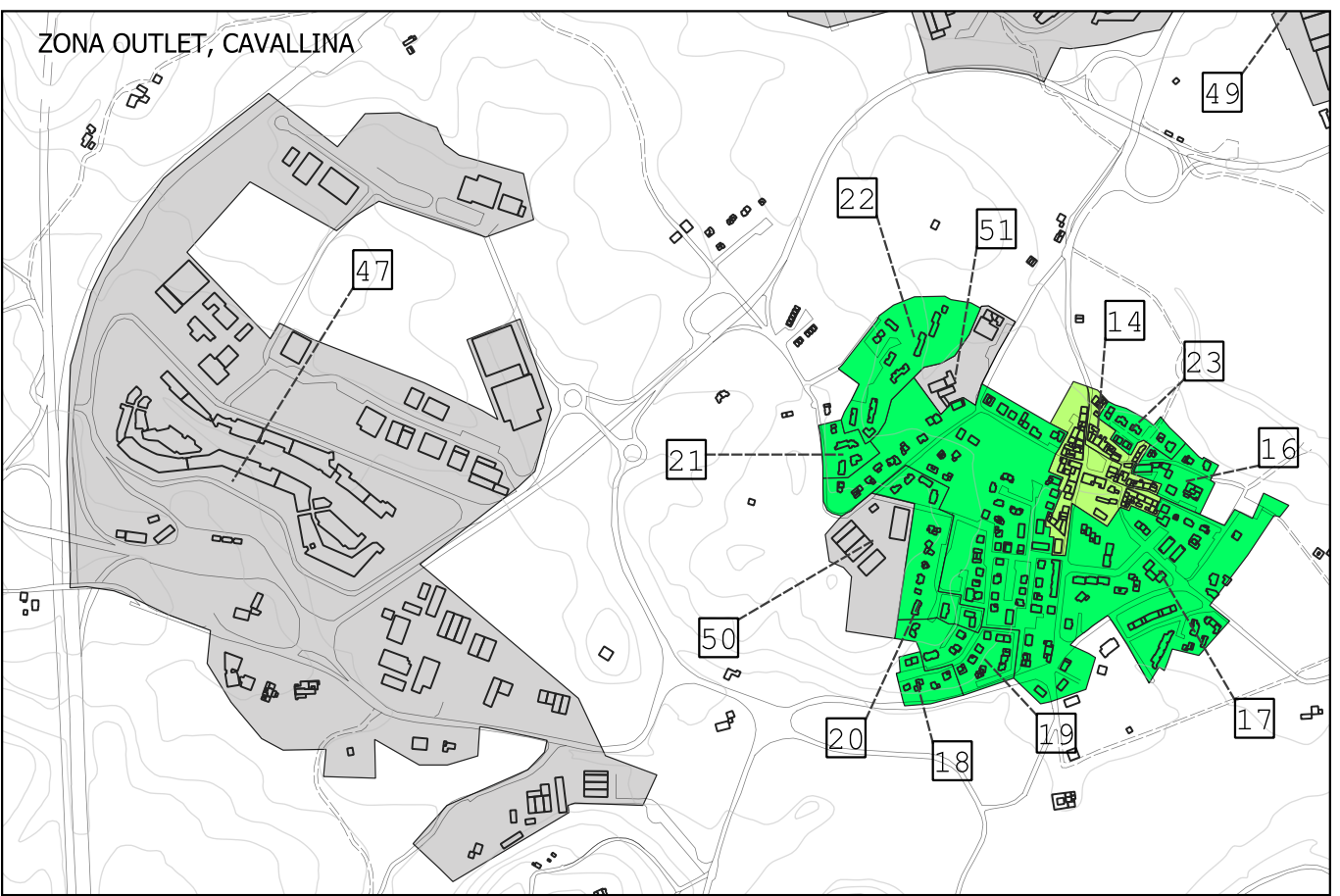
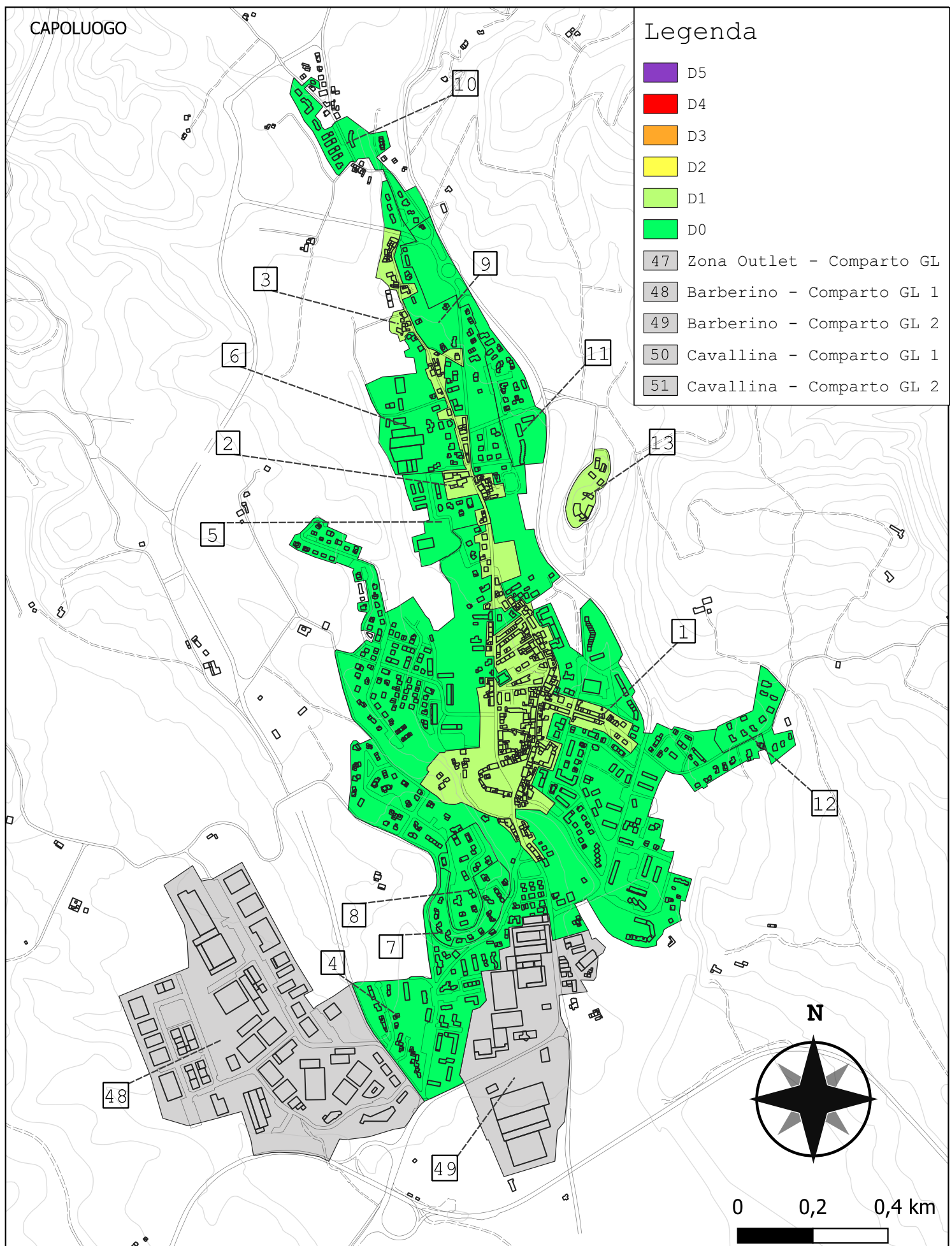
Comparti a livello comunale

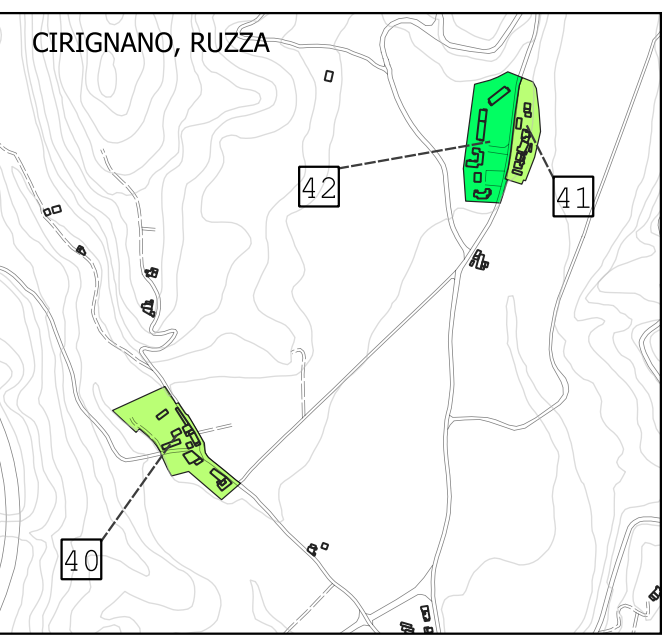
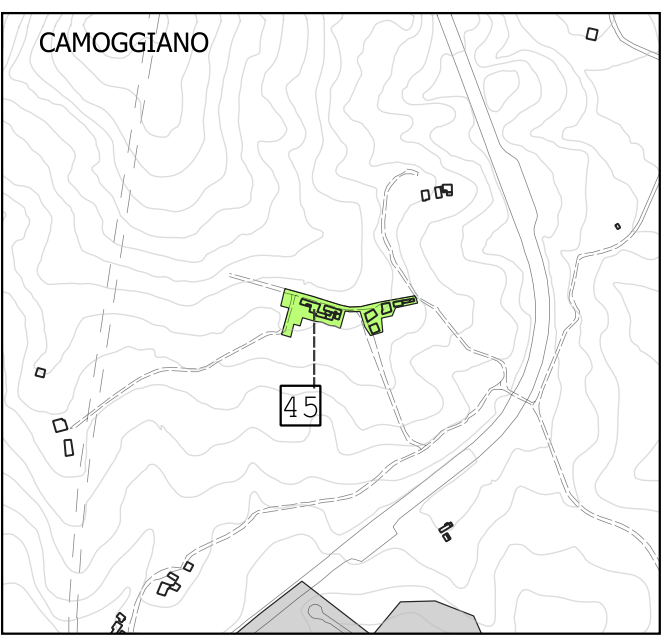
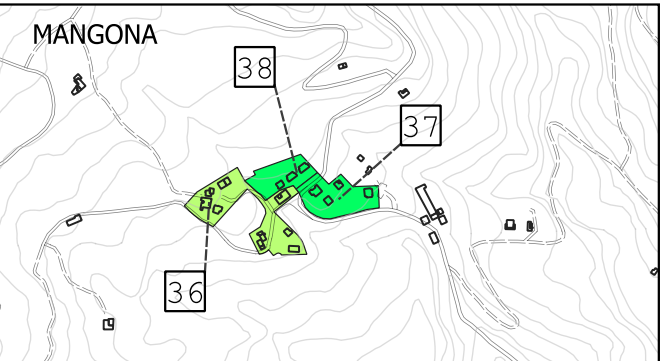
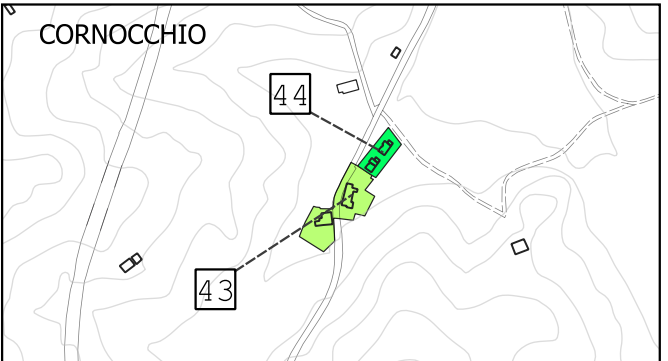
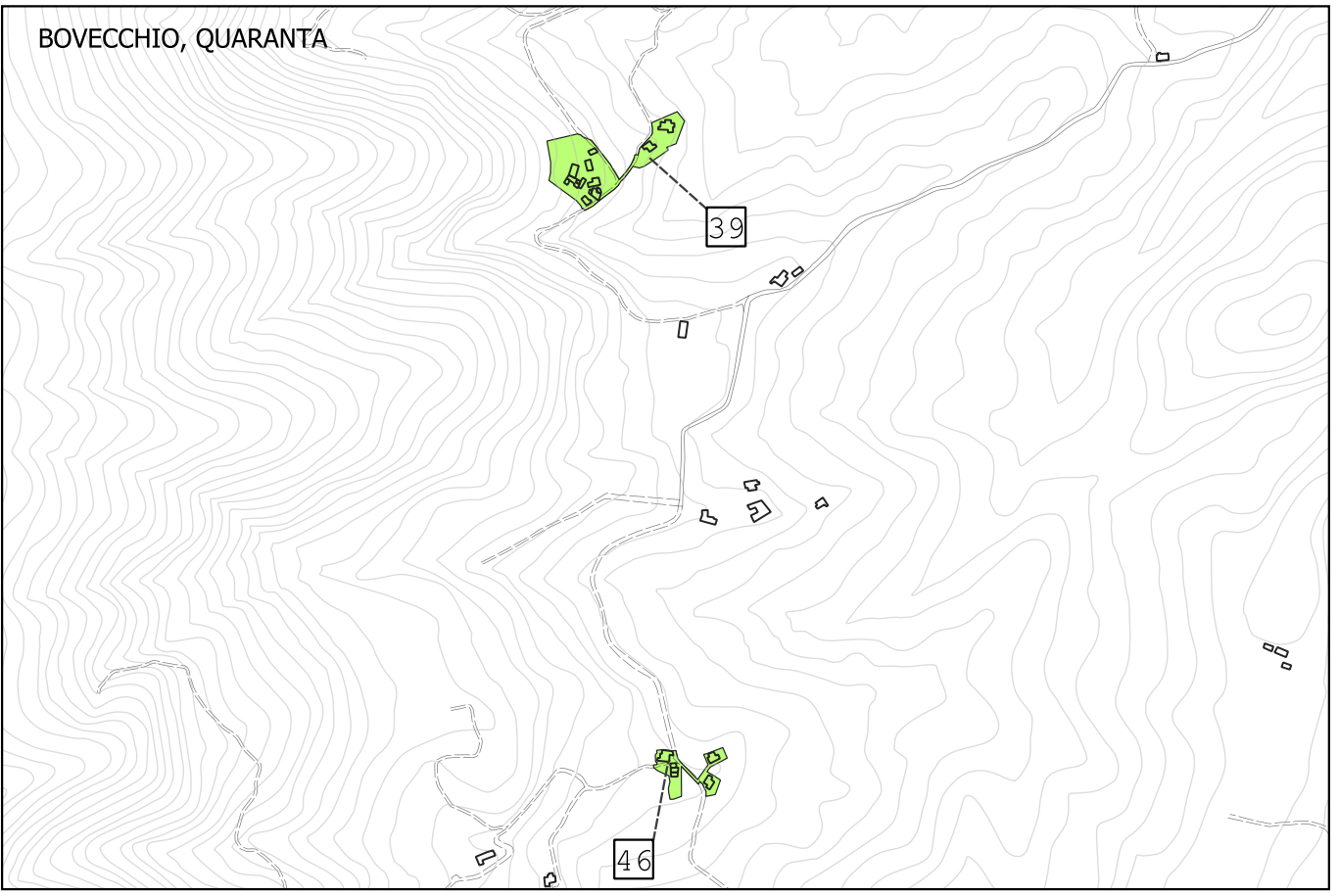
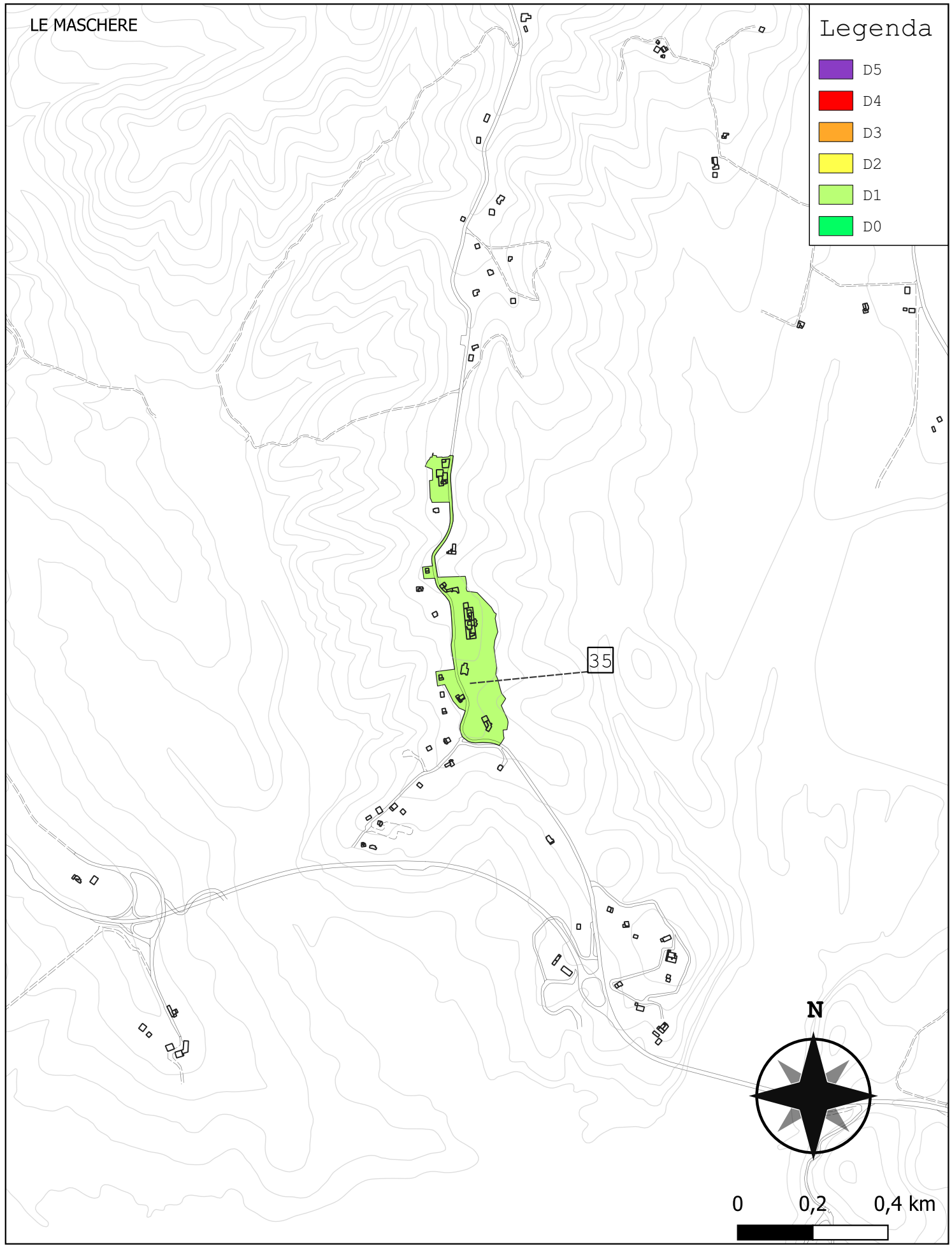
Comparto	Num. Ed.	Vol. [m ³]	I _{r,medio}	stdev	COV
27	103	92 286	8.101	0.645	8.000
28	10	17 712	6.000	0.000	6.000
29	44	31 771	7.893	0.540	8.000
30	24	17 374	6.848	0.680	7.000
31	7	10 022	5.250	0.535	6.000
32	13	10 998	8.712	0.519	9.000
33	14	14 577	8.000	0.000	8.000
34	8	8 516	6.828	0.991	8.000
35	38	43 639	7.867	0.446	8.000
36	15	10 941	10.887	0.352	11.000
37	5	3 931	8.165	0.447	8.000
38	3	3 988	7.000	0.000	7.000
39	14	20 830	9.929	0.363	10.000
40	16	15 041	9.915	0.342	10.000
41	18	8 344	10.900	0.236	11.000
42	16	18 989	7.621	0.479	8.000
43	2	6 374	10.000	0.000	10.000
44	5	2 122			
45	12	11 750	7.903	0.289	8.000
46	6	6 245	9.000	0.000	9.000
52	1 165	1 038 684			
altro	41	1 224 777			
tot	3 582	3 074 256	8.117	2.470	9.000

*Comparto costituito da edifici in legno realizzati post 2018: RISCHIO MEDIO - BASSO

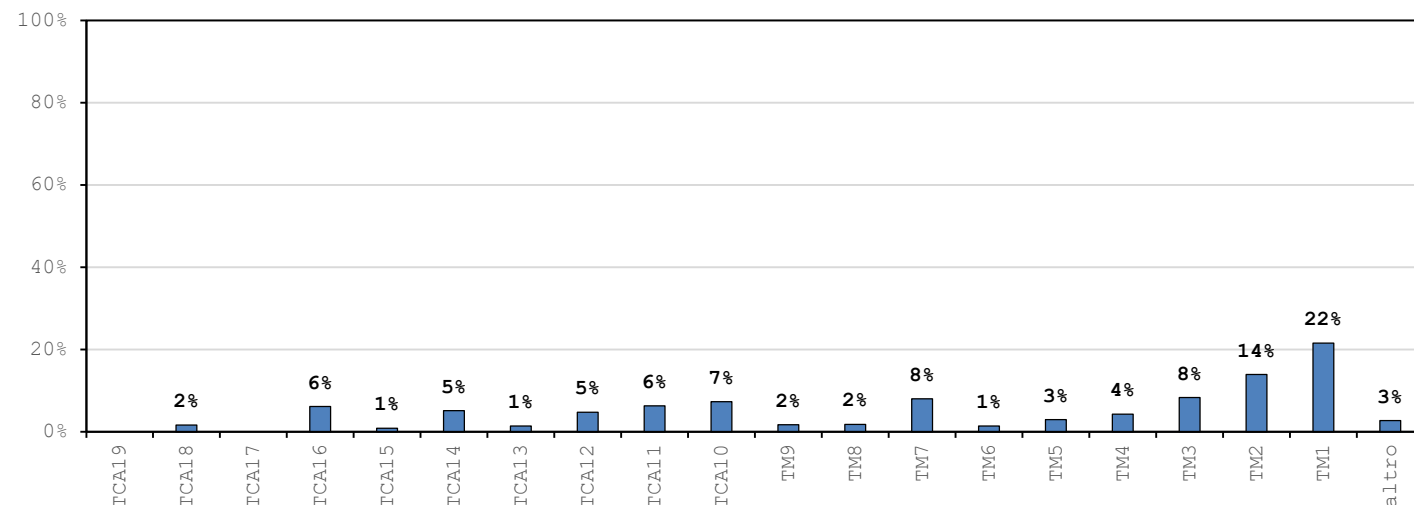




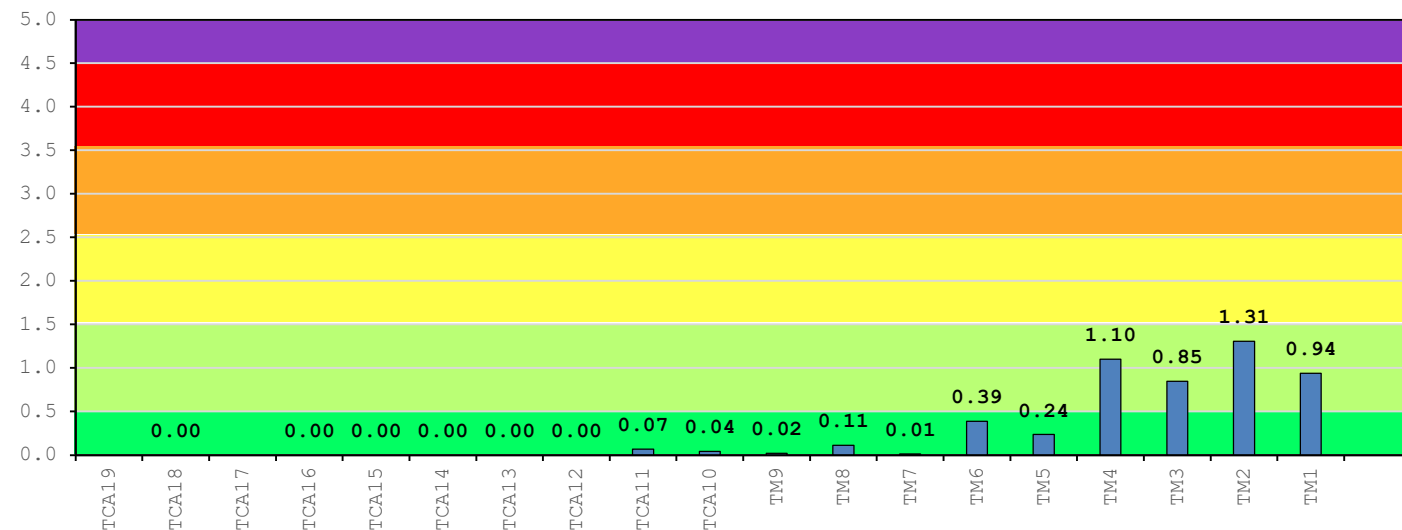




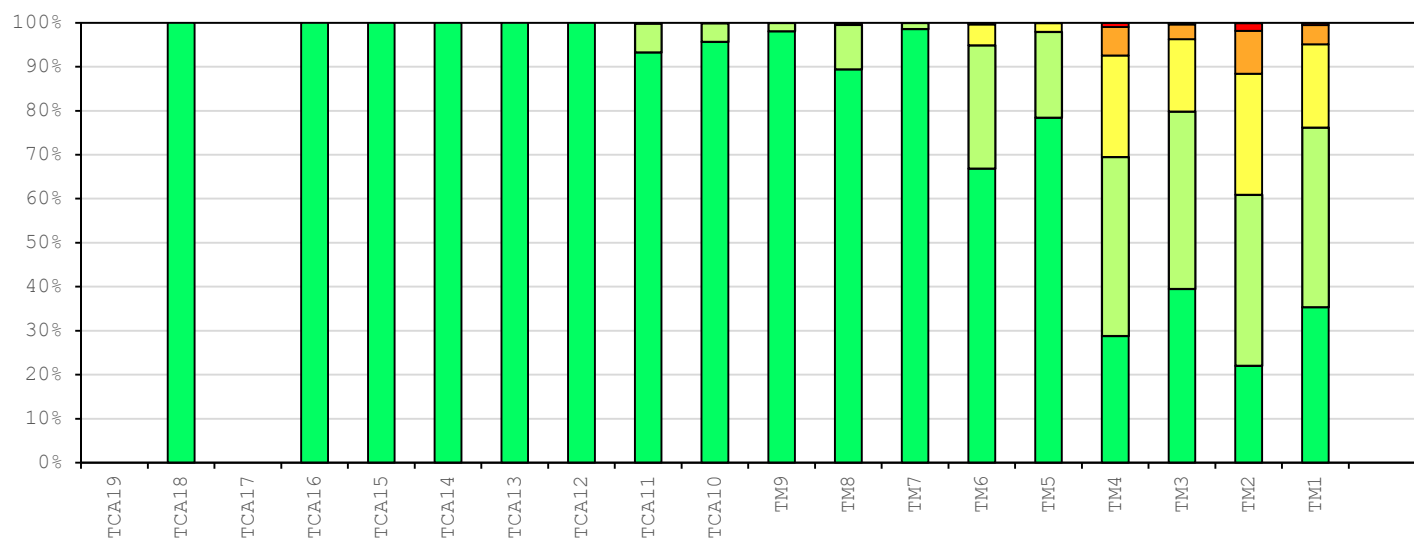
INCIDENZA TIPOLOGIE EDILIZIE



DANNO MEDIO TIPOLOGIE EDILIZIE



DISTRIBUZIONE DANNO SULLA TIPOLOGIA EDILIZIA

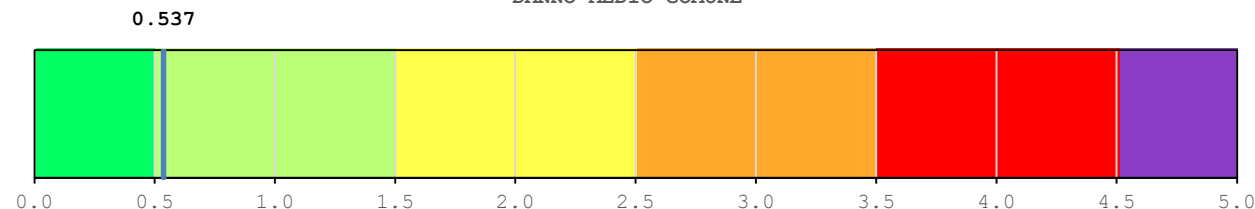


Tipologie significative a livello comunale

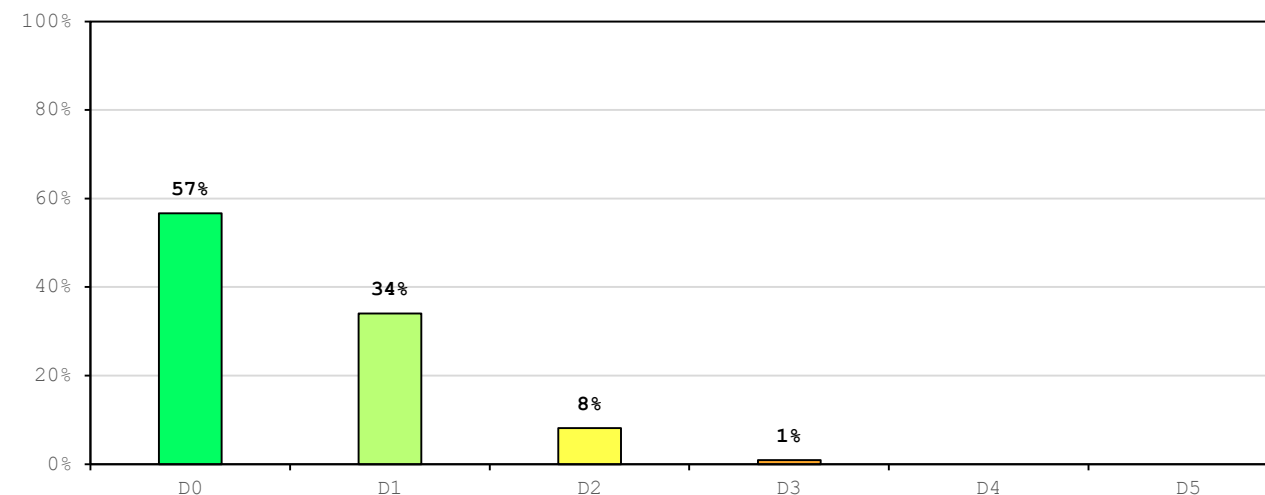
$I_{EMS-98} = 6$ $PGA = 0.060g$

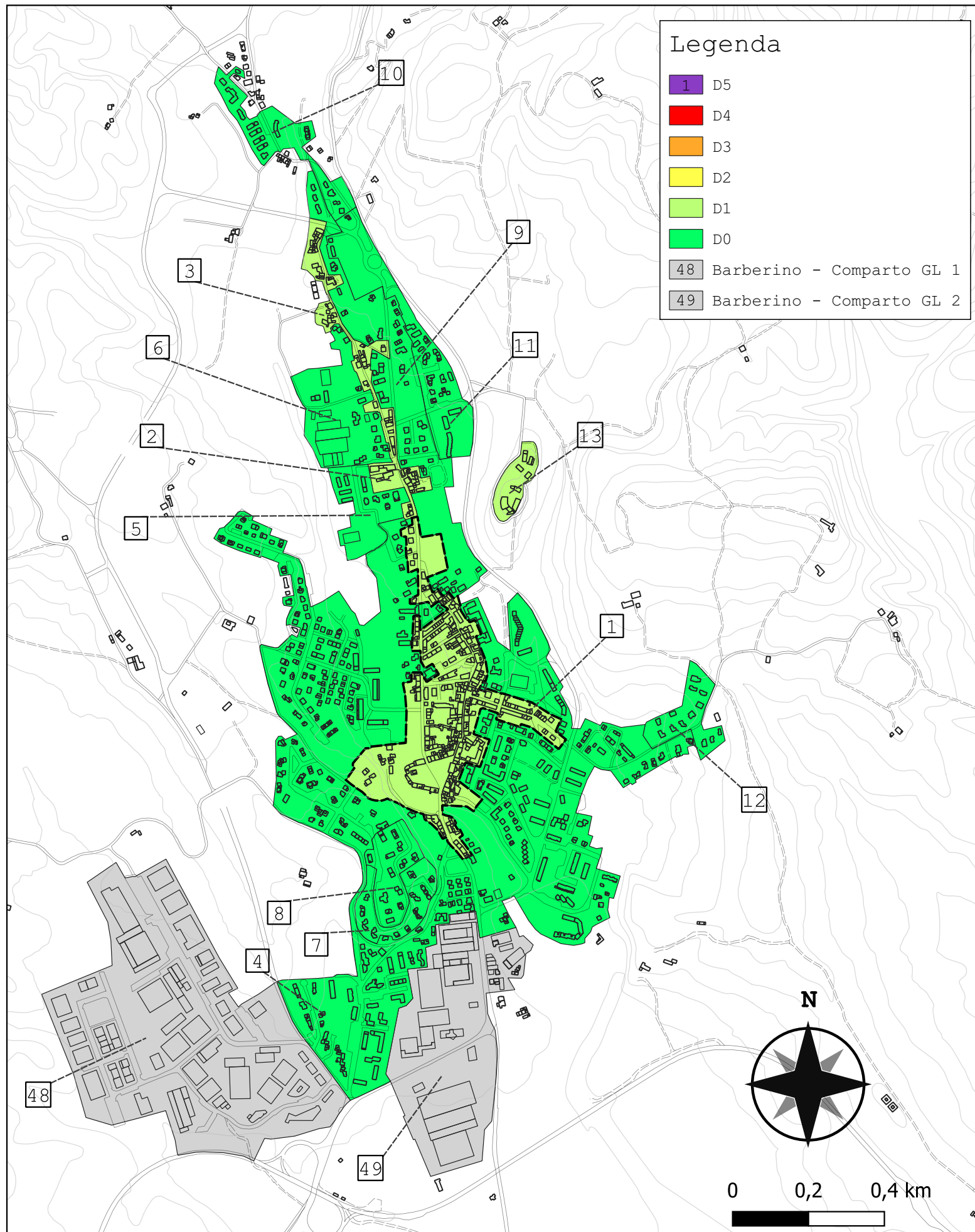
Tipologie	Vol. [m ³]	D _{medio}	D0	D1	D2	D3	D4	D5
TM1	661 207	0.939	35%	41%	19%	4%	1%	0%
TM2	426 878	1.306	22%	39%	28%	10%	2%	0%
TM3	256 423	0.848	39%	40%	16%	3%	0%	0%
TM4	131 553	1.101	29%	41%	23%	6%	1%	0%
TM5	89 964	0.237	78%	20%	2%	0%	0%	0%
TM6	42 683	0.387	67%	28%	5%	0%	0%	0%
TM7	246 994	0.014	99%	1%	0%	0%	0%	0%
TM8	55 231	0.110	89%	10%	0%	0%	0%	0%
TM9	52 416	0.019	98%	2%	0%	0%	0%	0%
TCA10	225 499	0.044	96%	4%	0%	0%	0%	0%
TCA11	192 734	0.069	93%	7%	0%	0%	0%	0%
TCA12	144 861	0.000	100%	0%	0%	0%	0%	0%
TCA13	43 542	0.000	100%	0%	0%	0%	0%	0%
TCA14	158 242	0.000	100%	0%	0%	0%	0%	0%
TCA15	25 229	0.000	100%	0%	0%	0%	0%	0%
TCA16	189 566	0.000	100%	0%	0%	0%	0%	0%
TCA17	-	-	-	-	-	-	-	-
TCA18	48 571	0.000	100%	0%	0%	0%	0%	0%
TCA19	-	-	-	-	-	-	-	-
altro	82 663	-	-	-	-	-	-	-
tot.	3 074 256	0.537	57%	34%	8%	1%	0%	0%

DANNO MEDIO COMUNE

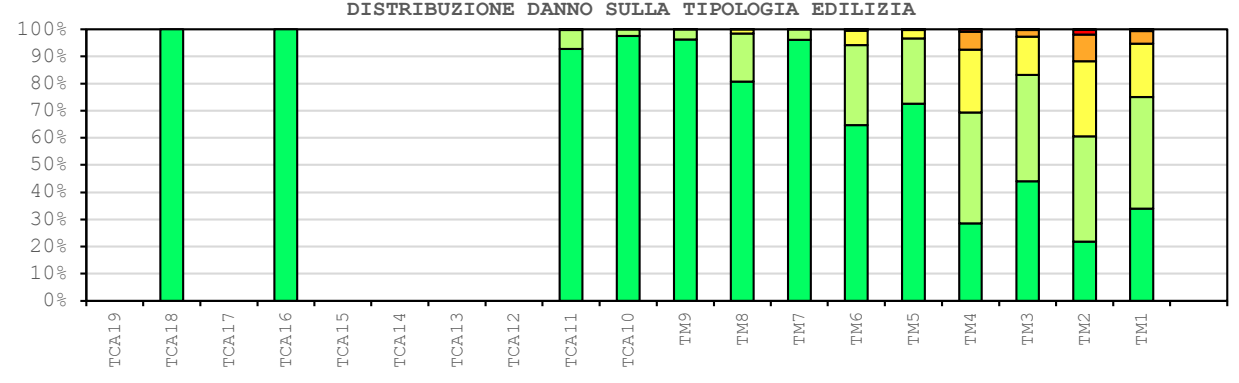
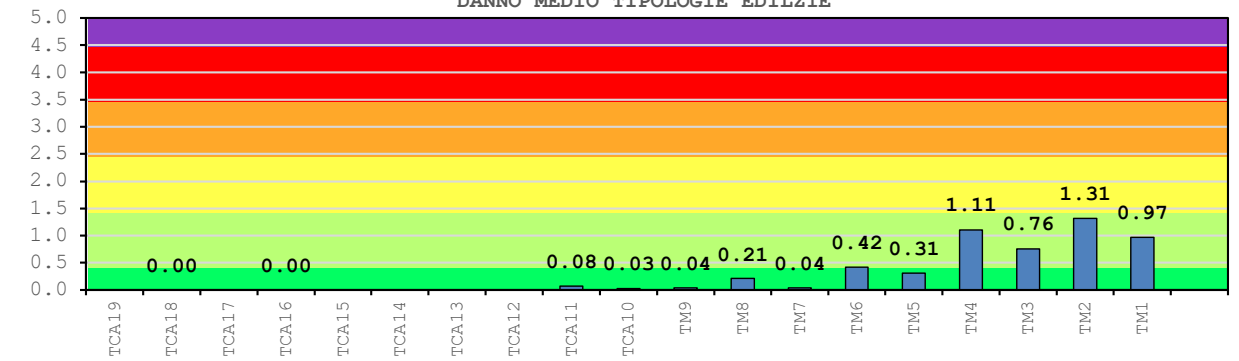
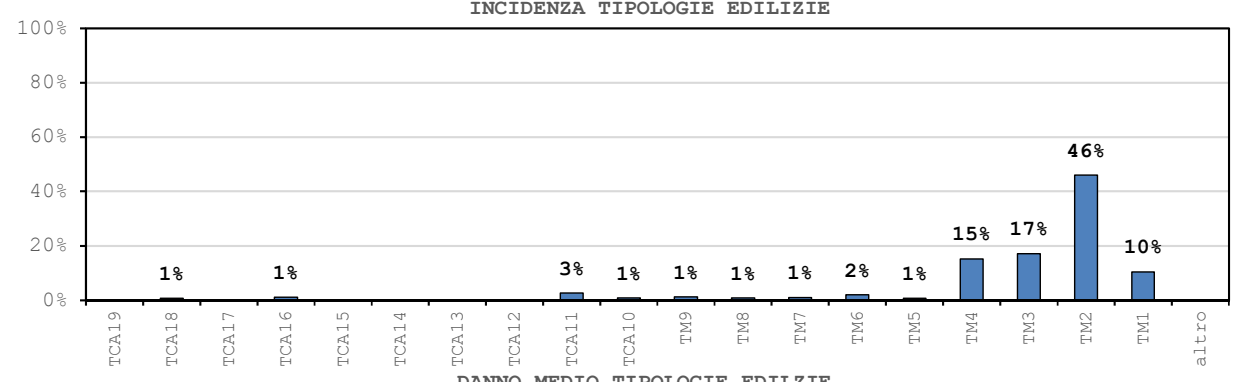
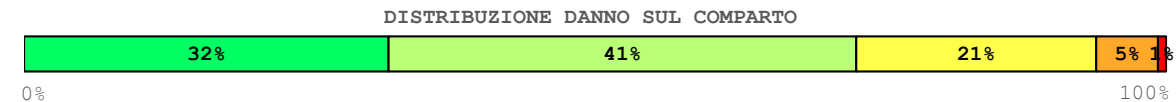


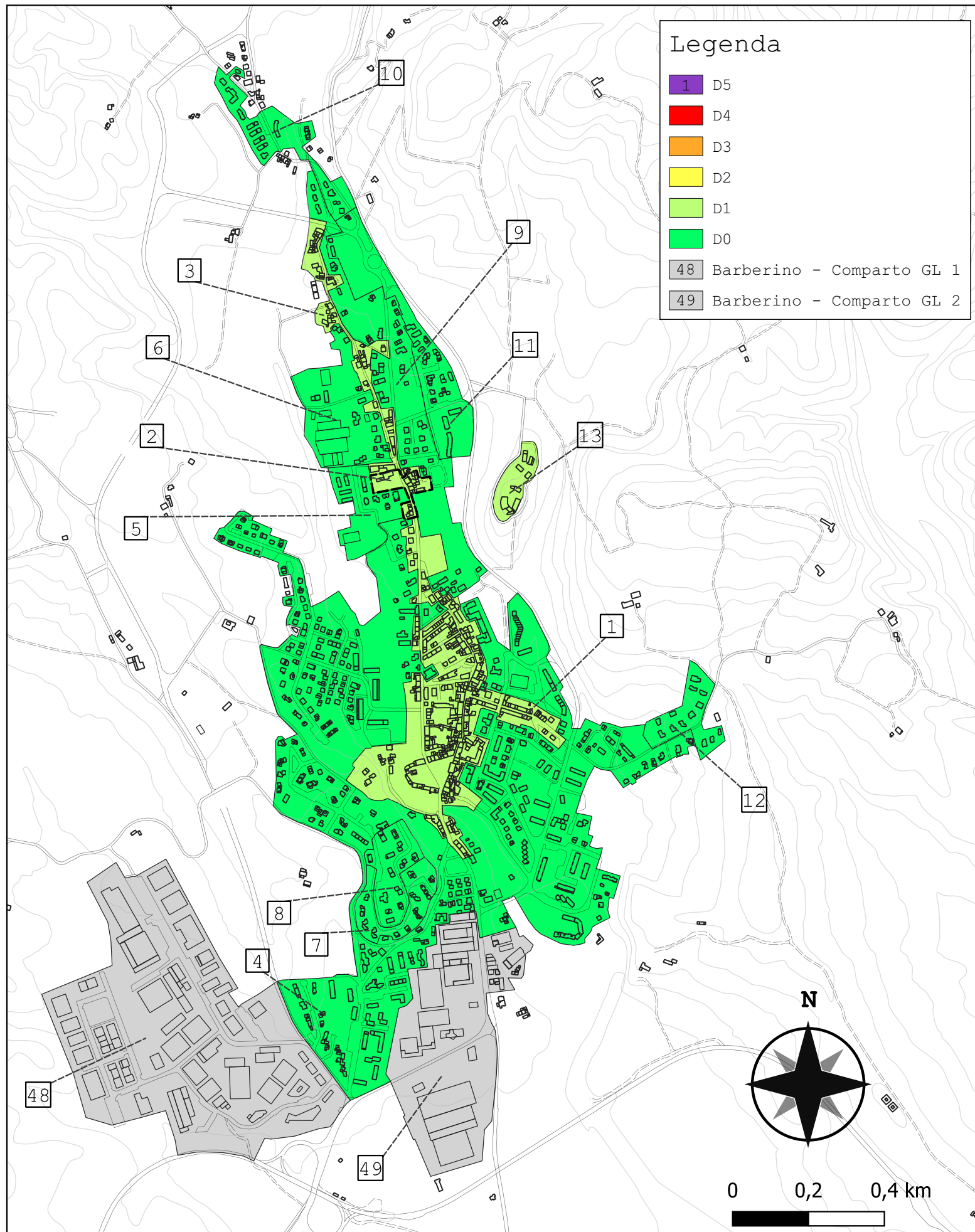
DISTRIBUZIONE DANNO SUL COMUNE



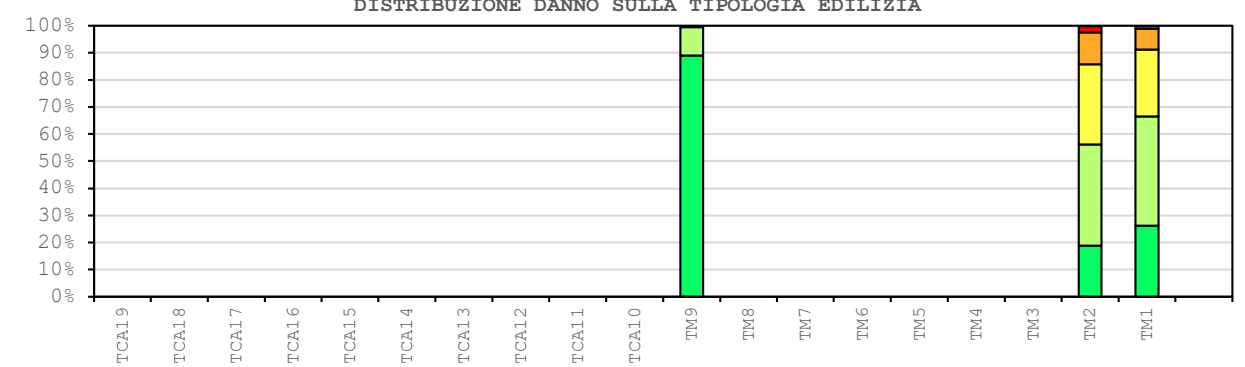
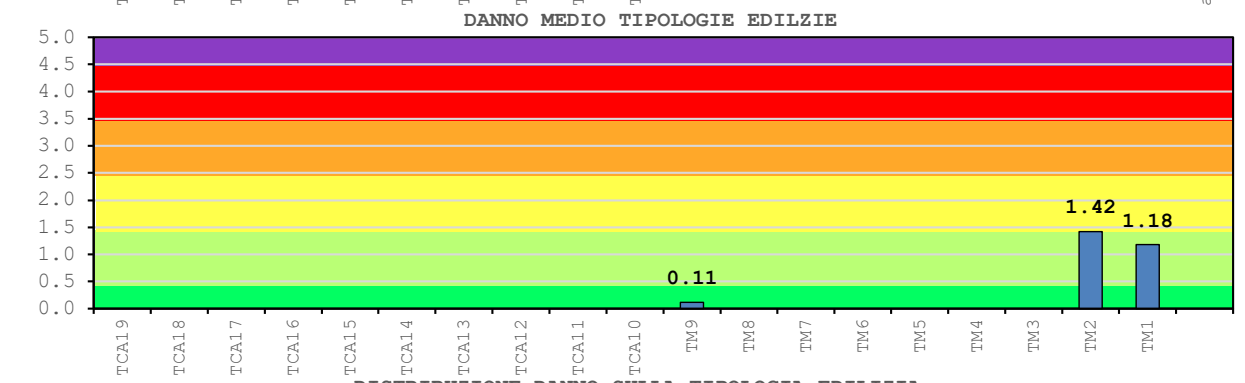
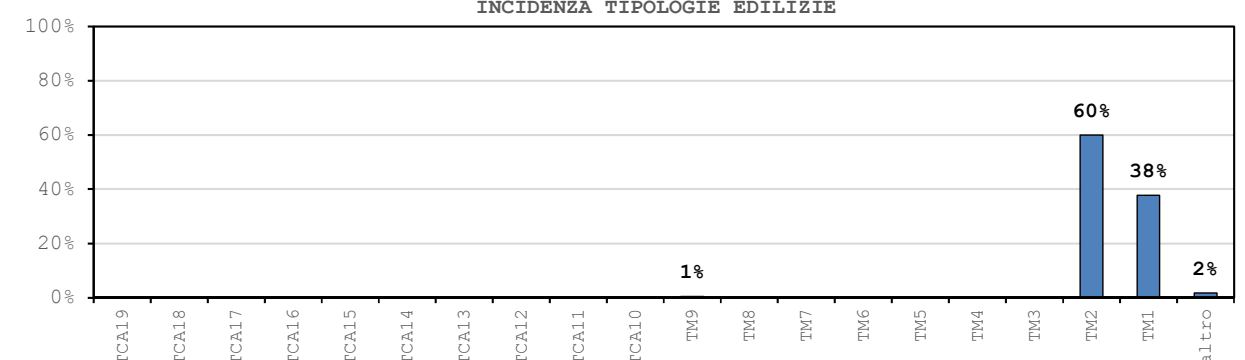
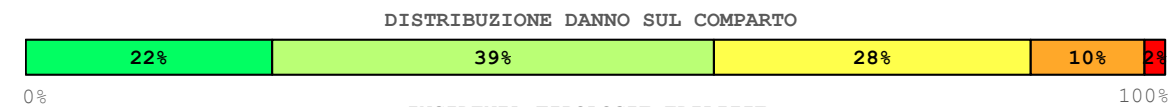


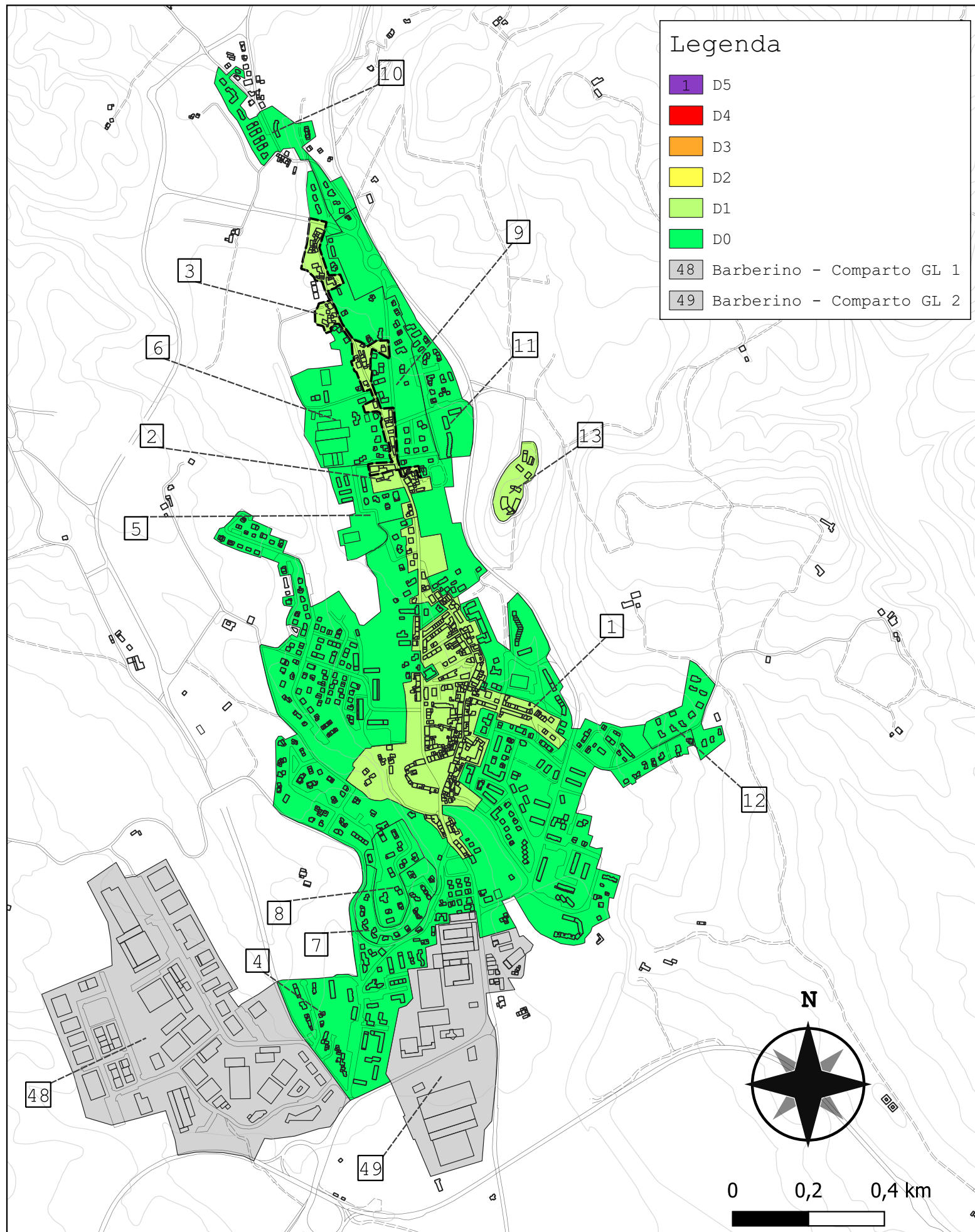
Comparto 1		Barberino 1A					$I_{EMS-98} = 6$ $PGA = 0.060g$		
Incidenza vol. comparto a livello comunale 9.9%									
Tipologie	Vol. [m ³]	D _{medio}	D0	D1	D2	D3	D4	D5	
TM1	31 846	0.969	34%	41%	20%	5%	1%	0%	
TM2	139 768	1.314	22%	39%	28%	10%	2%	0%	
TM3	52 071	0.758	44%	39%	14%	3%	0%	0%	
TM4	46 350	1.108	29%	41%	23%	7%	1%	0%	
TM5	2 306	0.310	73%	24%	3%	0%	0%	0%	
TM6	6 168	0.418	65%	29%	5%	0%	0%	0%	
TM7	2 948	0.040	96%	4%	0%	0%	0%	0%	
TM8	2 446	0.210	81%	18%	2%	0%	0%	0%	
TM9	3 712	0.039	96%	4%	0%	0%	0%	0%	
TCA10	2 593	0.025	98%	2%	0%	0%	0%	0%	
TCA11	7 890	0.075	93%	7%	0%	0%	0%	0%	
TCA12	-	-	-	-	-	-	-	-	
TCA13	-	-	-	-	-	-	-	-	
TCA14	-	-	-	-	-	-	-	-	
TCA15	-	-	-	-	-	-	-	-	
TCA16	3 242	0.000	100%	0%	0%	0%	0%	0%	
TCA17	-	-	-	-	-	-	-	-	
TCA18	2 283	0.000	100%	0%	0%	0%	0%	0%	
TCA19	-	-	-	-	-	-	-	-	
altro	-	-	-	-	-	-	-	-	
tot.	303 621	1.021	32%	41%	21%	5%	1%	0%	



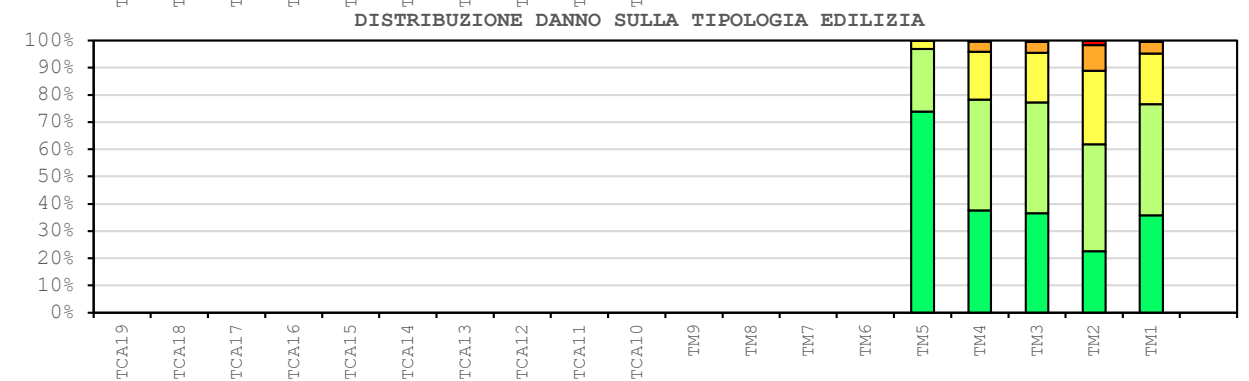
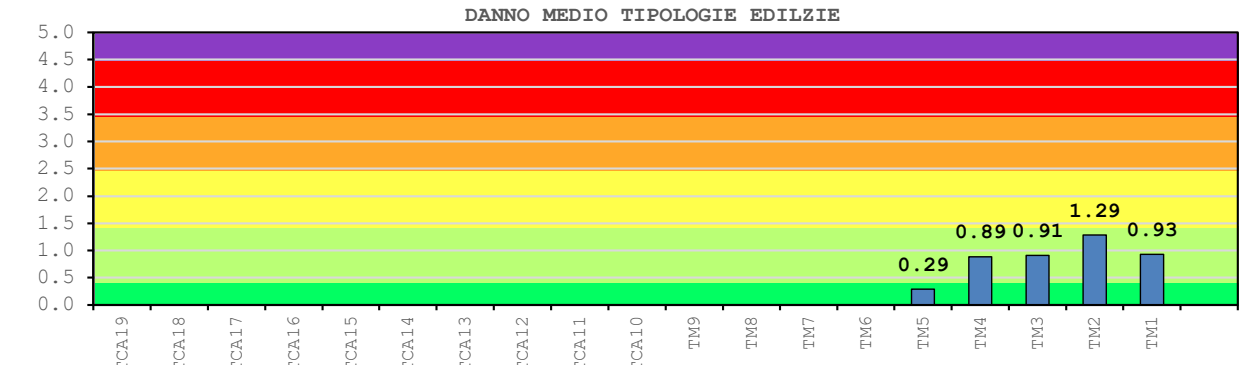
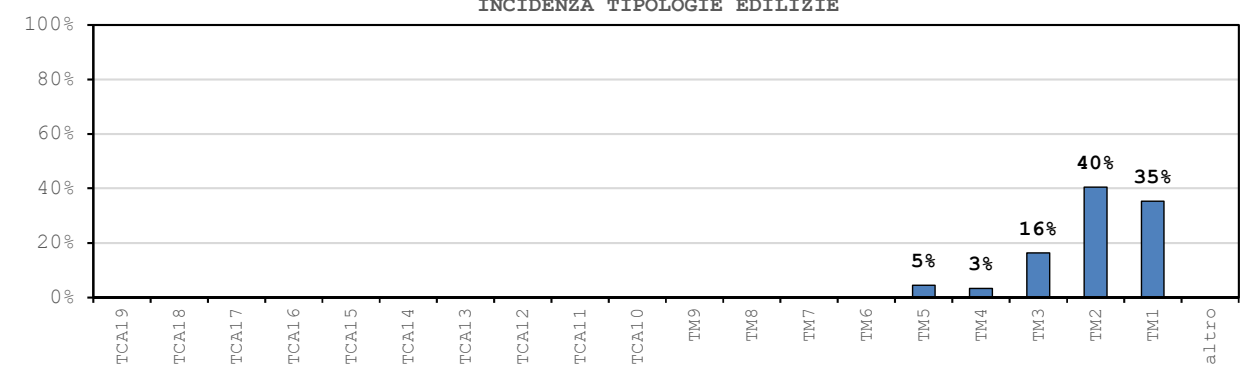
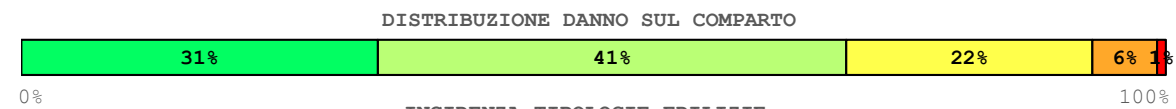


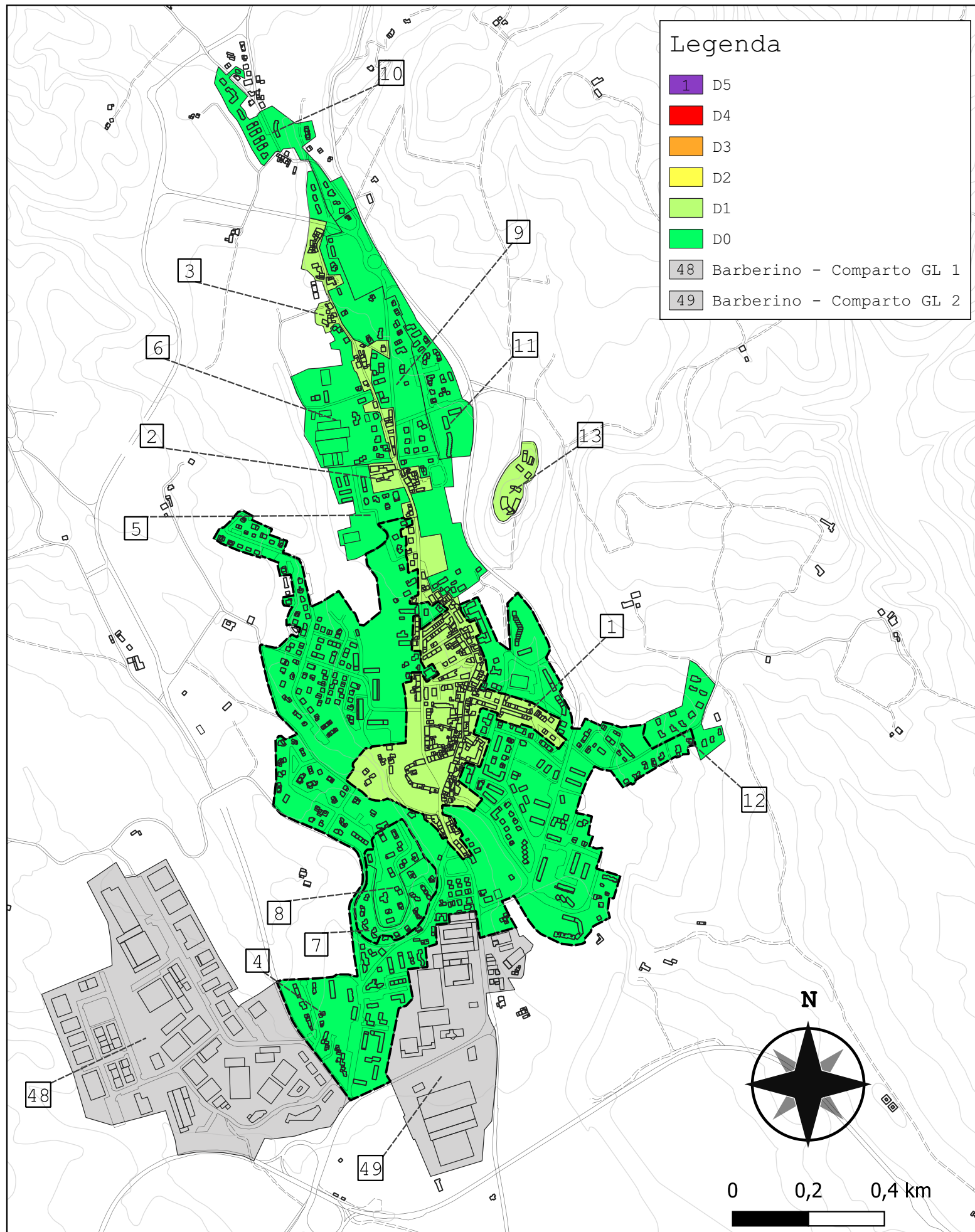
Comparto 2		Barberino 1B					$I_{EMS-98} = 6$ $PGA = 0.060g$		
Incidenza vol. comparto a livello comunale 0.5%									
Tipologie	Vol. [m ³]	D _{medio}	D0	D1	D2	D3	D4	D5	
TM1	6 248	1.176	26%	40%	25%	8%	1%	0%	
TM2	9 923	1.422	19%	37%	30%	12%	2%	0%	
TM3	-	-	-	-	-	-	-	-	
TM4	-	-	-	-	-	-	-	-	
TM5	-	-	-	-	-	-	-	-	
TM6	-	-	-	-	-	-	-	-	
TM7	-	-	-	-	-	-	-	-	
TM8	-	-	-	-	-	-	-	-	
TM9	86	0.115	89%	10%	0%	0%	0%	0%	
TCA10	-	-	-	-	-	-	-	-	
TCA11	-	-	-	-	-	-	-	-	
TCA12	-	-	-	-	-	-	-	-	
TCA13	-	-	-	-	-	-	-	-	
TCA14	-	-	-	-	-	-	-	-	
TCA15	-	-	-	-	-	-	-	-	
TCA16	-	-	-	-	-	-	-	-	
TCA17	-	-	-	-	-	-	-	-	
TCA18	-	-	-	-	-	-	-	-	
TCA19	-	-	-	-	-	-	-	-	
altro	291	-	-	-	-	-	-	-	
tot.	16 547	1.320	22%	39%	28%	10%	2%	0%	





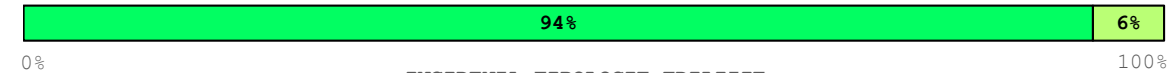
Comparto 3		Barberino 1C					$I_{EMS-98} = 6$ $PGA = 0.060g$		
Incidenza vol. comparto a livello comunale 1.6%									
Tipologie	Vol. [m ³]	D _{medio}	D0	D1	D2	D3	D4	D5	
TM1	16 892	0.930	36%	41%	19%	4%	0%	0%	
TM2	19 350	1.286	23%	39%	27%	9%	2%	0%	
TM3	7 816	0.912	37%	41%	18%	4%	0%	0%	
TM4	1 590	0.889	38%	41%	18%	4%	0%	0%	
TM5	2 173	0.295	74%	23%	3%	0%	0%	0%	
TM6	-	-	-	-	-	-	-	-	
TM7	-	-	-	-	-	-	-	-	
TM8	-	-	-	-	-	-	-	-	
TM9	-	-	-	-	-	-	-	-	
TCA10	-	-	-	-	-	-	-	-	
TCA11	-	-	-	-	-	-	-	-	
TCA12	-	-	-	-	-	-	-	-	
TCA13	-	-	-	-	-	-	-	-	
TCA14	-	-	-	-	-	-	-	-	
TCA15	-	-	-	-	-	-	-	-	
TCA16	-	-	-	-	-	-	-	-	
TCA17	-	-	-	-	-	-	-	-	
TCA18	-	-	-	-	-	-	-	-	
TCA19	-	-	-	-	-	-	-	-	
altro	-	-	-	-	-	-	-	-	
tot.	47 821	1.041	31%	41%	22%	6%	1%	0%	



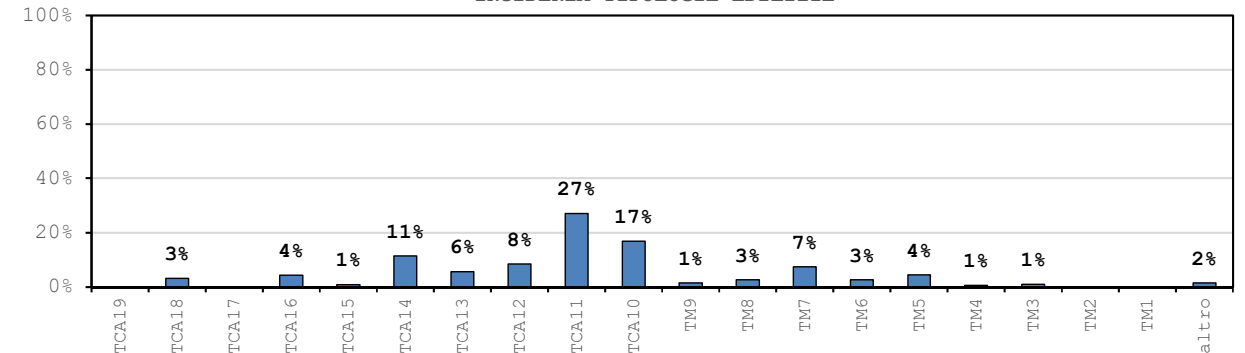


Comparto 4		Barberino 2A		$I_{EMS-98} = 6$ $PGA = 0.060g$				
Incidenza vol. comparto a livello comunale 19.6%								
Tipologie	Vol. [m ³]	D _{medio}	D0	D1	D2	D3	D4	D5
TM1	-	-	-	-	-	-	-	-
TM2	-	-	-	-	-	-	-	-
TM3	6 182	0.768	43%	39%	14%	3%	0%	0%
TM4	3 707	1.027	32%	41%	21%	5%	1%	0%
TM5	26 576	0.191	82%	16%	1%	0%	0%	0%
TM6	15 976	0.337	71%	25%	4%	0%	0%	0%
TM7	44 876	0.007	99%	1%	0%	0%	0%	0%
TM8	15 542	0.081	92%	8%	0%	0%	0%	0%
TM9	8 815	0.010	99%	1%	0%	0%	0%	0%
TCA10	101 276	0.044	96%	4%	0%	0%	0%	0%
TCA11	163 287	0.068	93%	6%	0%	0%	0%	0%
TCA12	50 998	0.000	100%	0%	0%	0%	0%	0%
TCA13	33 653	0.000	100%	0%	0%	0%	0%	0%
TCA14	69 011	0.000	100%	0%	0%	0%	0%	0%
TCA15	5 097	0.000	100%	0%	0%	0%	0%	0%
TCA16	25 692	0.000	100%	0%	0%	0%	0%	0%
TCA17	-	-	-	-	-	-	-	-
TCA18	19 278	0.000	100%	0%	0%	0%	0%	0%
TCA19	-	-	-	-	-	-	-	-
altro	9 258	-	-	-	-	-	-	-
tot.	601 781	0.066	94%	6%	0%	0%	0%	0%

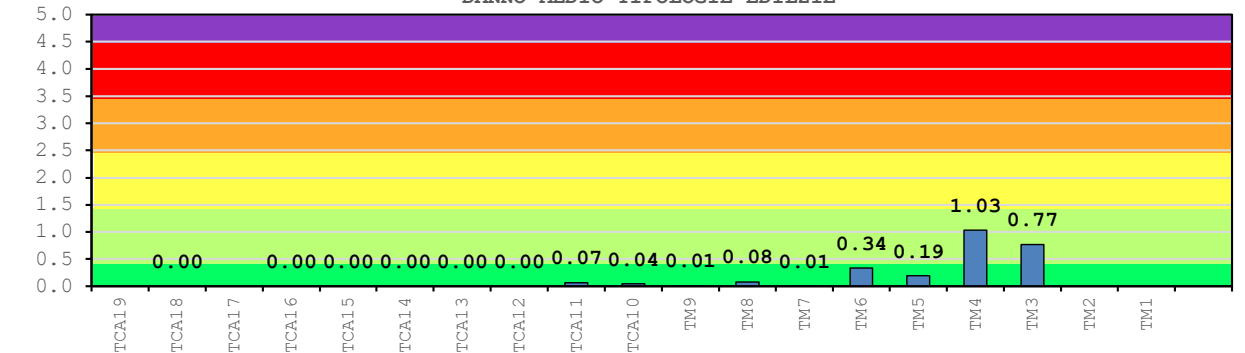
DISTRIBUZIONE DANNO SUL COMPARTO



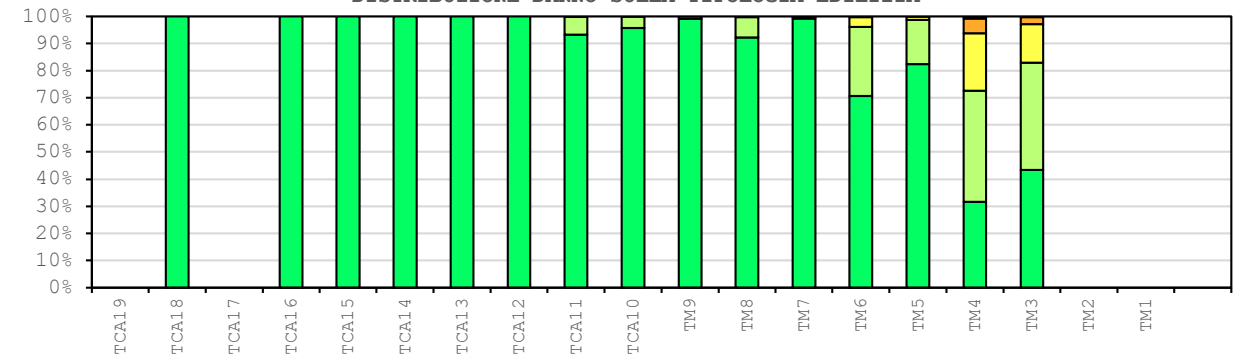
INCIDENZA TIPOLOGIE EDILIZIE

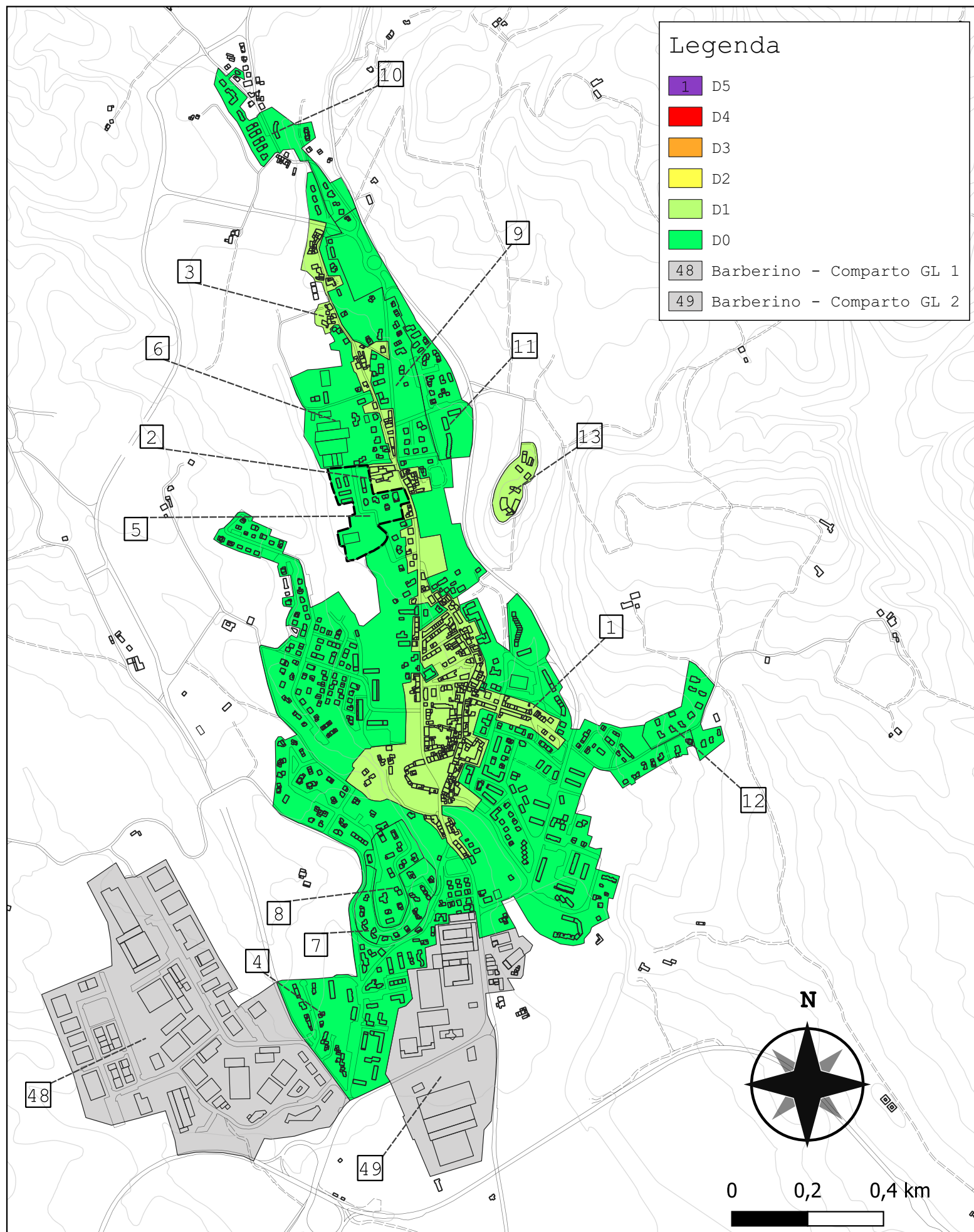


DANNO MEDIO TIPOLOGIE EDILIZIE



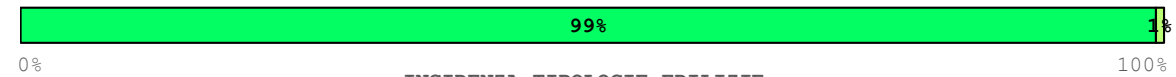
DISTRIBUZIONE DANNO SULLA TIPOLOGIA EDILIZIA



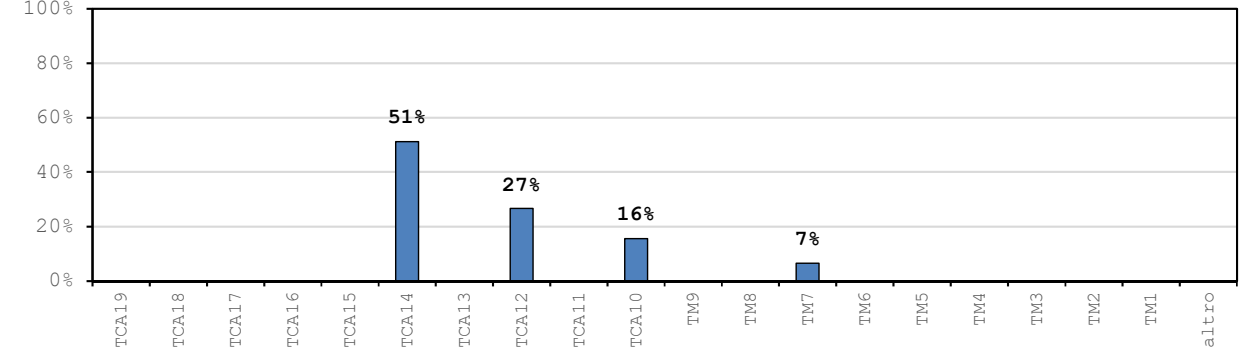


Comparto 5		Barberino 2B		$I_{EMS-98} = 6$ $PGA = 0.060g$				
Incidenza vol. comparto a livello comunale 0.5%								
Tipologie	Vol. [m ³]	D _{medio}	D0	D1	D2	D3	D4	D5
TM1	-	-	-	-	-	-	-	-
TM2	-	-	-	-	-	-	-	-
TM3	-	-	-	-	-	-	-	-
TM4	-	-	-	-	-	-	-	-
TM5	-	-	-	-	-	-	-	-
TM6	-	-	-	-	-	-	-	-
TM7	1 005	0.004	100%	0%	0%	0%	0%	0%
TM8	-	-	-	-	-	-	-	-
TM9	-	-	-	-	-	-	-	-
TCA10	2 386	0.042	96%	4%	0%	0%	0%	0%
TCA11	-	-	-	-	-	-	-	-
TCA12	4 063	0.000	100%	0%	0%	0%	0%	0%
TCA13	-	-	-	-	-	-	-	-
TCA14	7 821	0.000	100%	0%	0%	0%	0%	0%
TCA15	-	-	-	-	-	-	-	-
TCA16	-	-	-	-	-	-	-	-
TCA17	-	-	-	-	-	-	-	-
TCA18	-	-	-	-	-	-	-	-
TCA19	-	-	-	-	-	-	-	-
altro	-	-	-	-	-	-	-	-
tot.	15 275	0.007	99%	1%	0%	0%	0%	0%

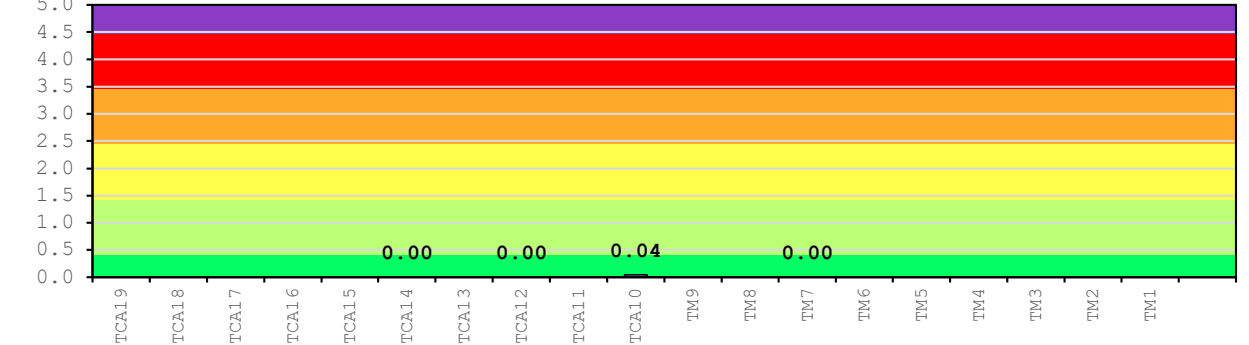
DISTRIBUZIONE DANNO SUL COMPARTO



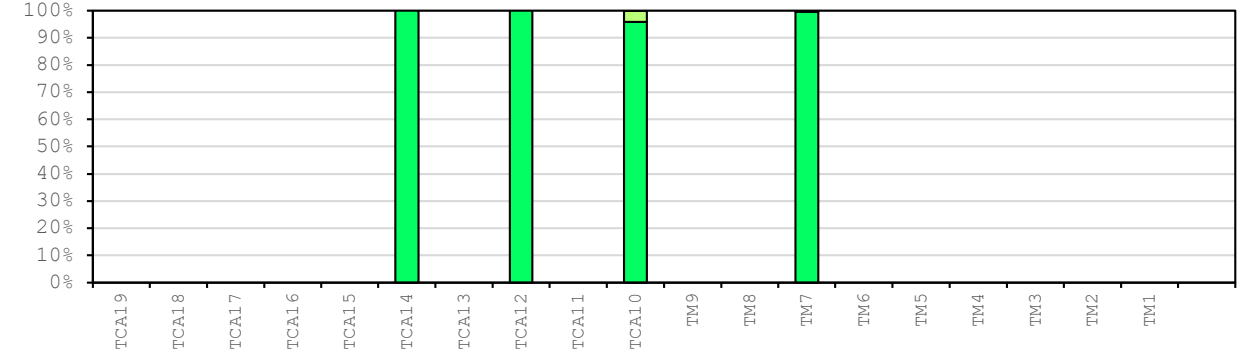
INCIDENZA TIPOLOGIE EDILIZIE

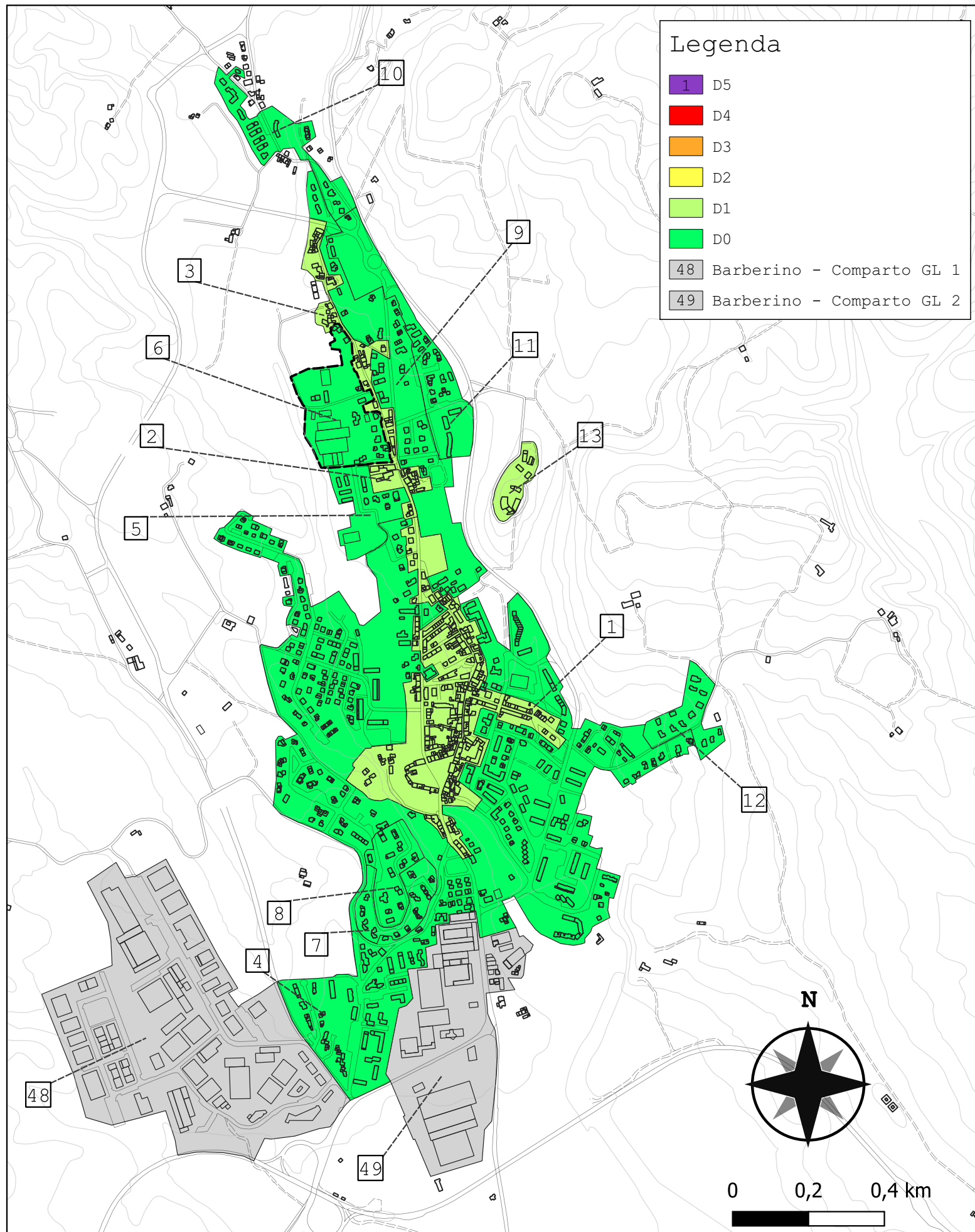


DANNO MEDIO TIPOLOGIE EDILIZIE



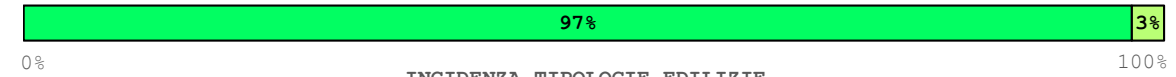
DISTRIBUZIONE DANNO SULLA TIPOLOGIA EDILIZIA



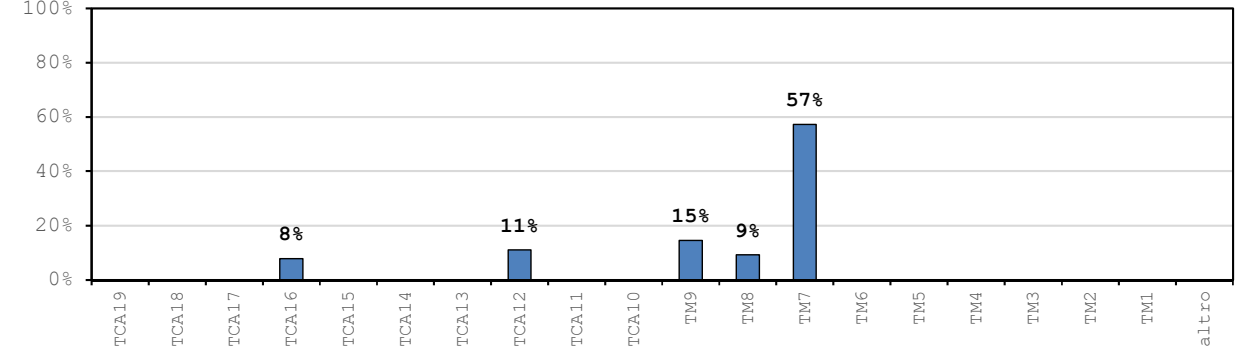


Comparto 6		Barberino 2C		$I_{EMS-98} = 6$ $PGA = 0.060g$				
Incidenza vol. comparto a livello comunale 0.6%								
Tipologie	Vol. [m ³]	D _{medio}	D0	D1	D2	D3	D4	D5
TM1	-	-	-	-	-	-	-	-
TM2	-	-	-	-	-	-	-	-
TM3	-	-	-	-	-	-	-	-
TM4	-	-	-	-	-	-	-	-
TM5	-	-	-	-	-	-	-	-
TM6	-	-	-	-	-	-	-	-
TM7	9 790	0.027	97%	3%	0%	0%	0%	0%
TM8	1 577	0.122	88%	11%	1%	0%	0%	0%
TM9	2 479	0.016	98%	2%	0%	0%	0%	0%
TCA10	-	-	-	-	-	-	-	-
TCA11	-	-	-	-	-	-	-	-
TCA12	1 898	0.000	100%	0%	0%	0%	0%	0%
TCA13	-	-	-	-	-	-	-	-
TCA14	-	-	-	-	-	-	-	-
TCA15	-	-	-	-	-	-	-	-
TCA16	1 342	0.000	100%	0%	0%	0%	0%	0%
TCA17	-	-	-	-	-	-	-	-
TCA18	-	-	-	-	-	-	-	-
TCA19	-	-	-	-	-	-	-	-
altro	-	-	-	-	-	-	-	-
tot.	17 086	0.029	97%	3%	0%	0%	0%	0%

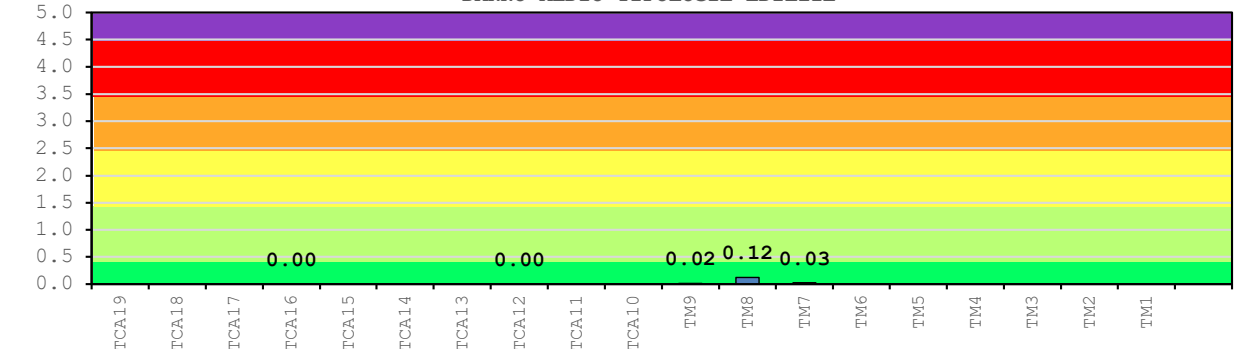
DISTRIBUZIONE DANNO SUL COMPARTO



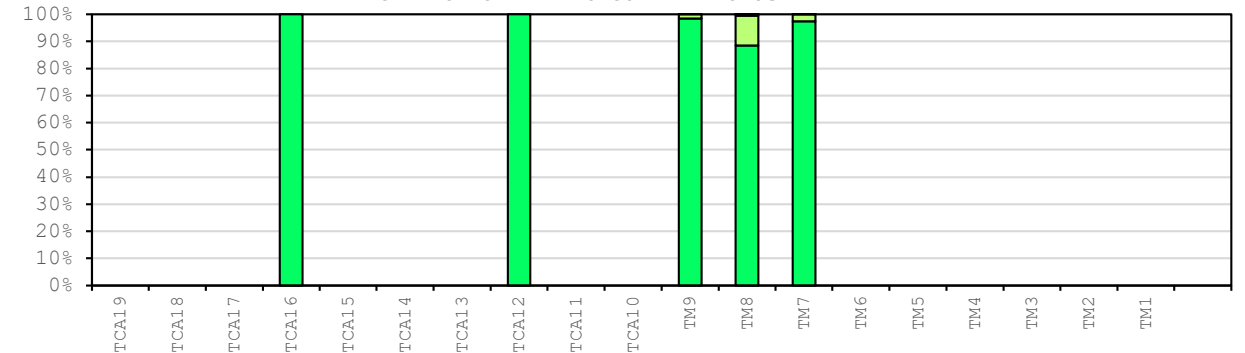
INCIDENZA TIPOLOGIE EDILIZIE

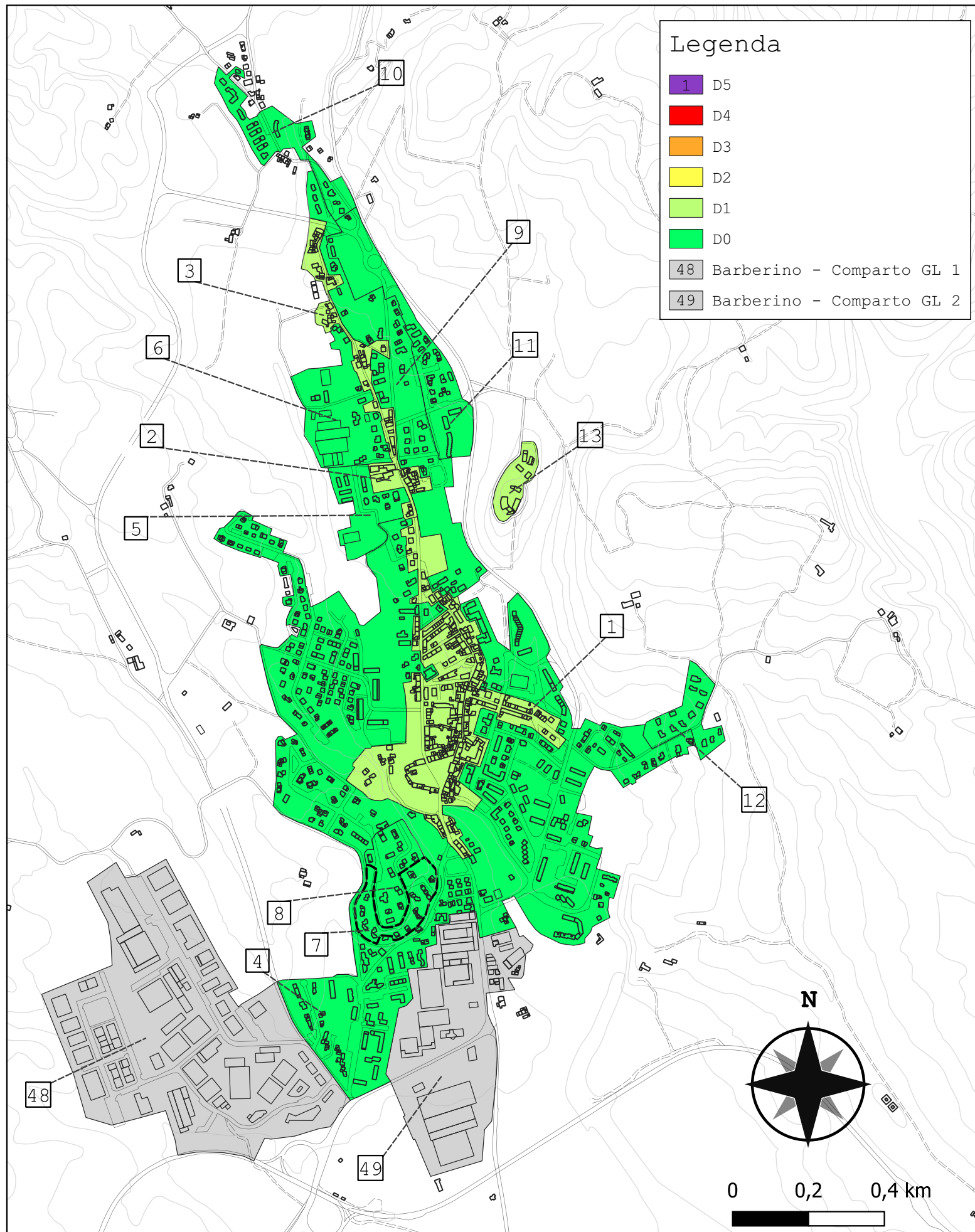


DANNO MEDIO TIPOLOGIE EDILIZIE



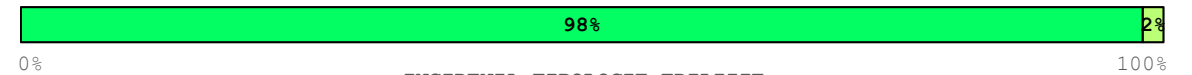
DISTRIBUZIONE DANNO SULLA TIPOLOGIA EDILIZIA



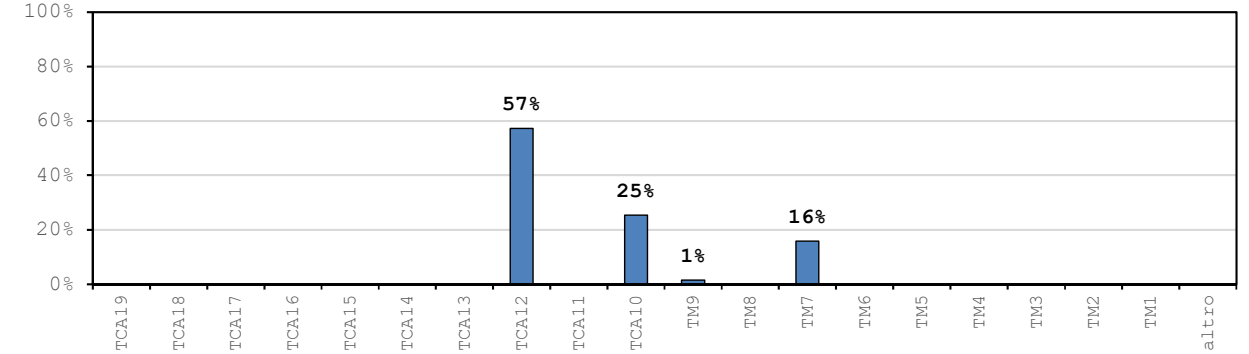


Comparto 7		Barberino 2D		$I_{EMS-98} = 6$ $PGA = 0.060g$				
Incidenza vol. comparto a livello comunale 0.6%								
Tipologie	Vol. [m ³]	D _{medio}	D0	D1	D2	D3	D4	D5
TM1	-	-	-	-	-	-	-	-
TM2	-	-	-	-	-	-	-	-
TM3	-	-	-	-	-	-	-	-
TM4	-	-	-	-	-	-	-	-
TM5	-	-	-	-	-	-	-	-
TM6	-	-	-	-	-	-	-	-
TM7	3 091	0.042	96%	4%	0%	0%	0%	0%
TM8	-	-	-	-	-	-	-	-
TM9	273	0.047	95%	5%	0%	0%	0%	0%
TCA10	4 951	0.042	96%	4%	0%	0%	0%	0%
TCA11	-	-	-	-	-	-	-	-
TCA12	11 158	0.000	100%	0%	0%	0%	0%	0%
TCA13	-	-	-	-	-	-	-	-
TCA14	-	-	-	-	-	-	-	-
TCA15	-	-	-	-	-	-	-	-
TCA16	-	-	-	-	-	-	-	-
TCA17	-	-	-	-	-	-	-	-
TCA18	-	-	-	-	-	-	-	-
TCA19	-	-	-	-	-	-	-	-
altro	-	-	-	-	-	-	-	-
tot.	19 473	0.018	98%	2%	0%	0%	0%	0%

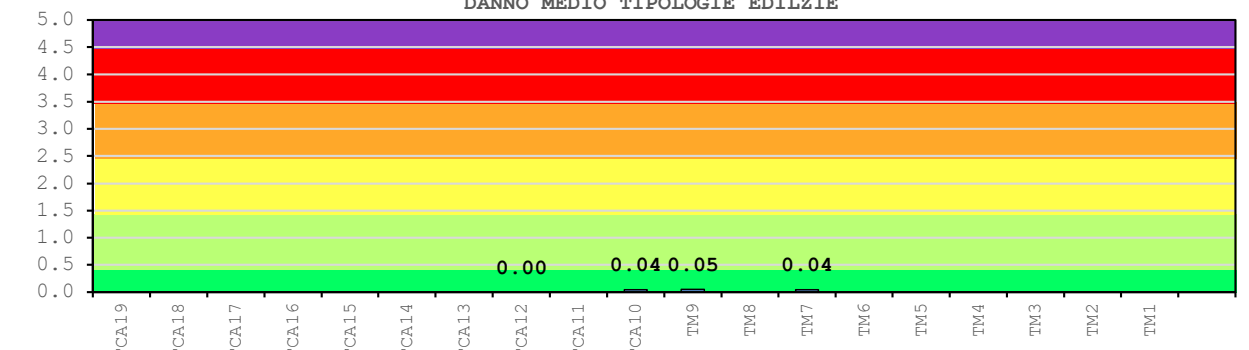
DISTRIBUZIONE DANNO SUL COMPARTO



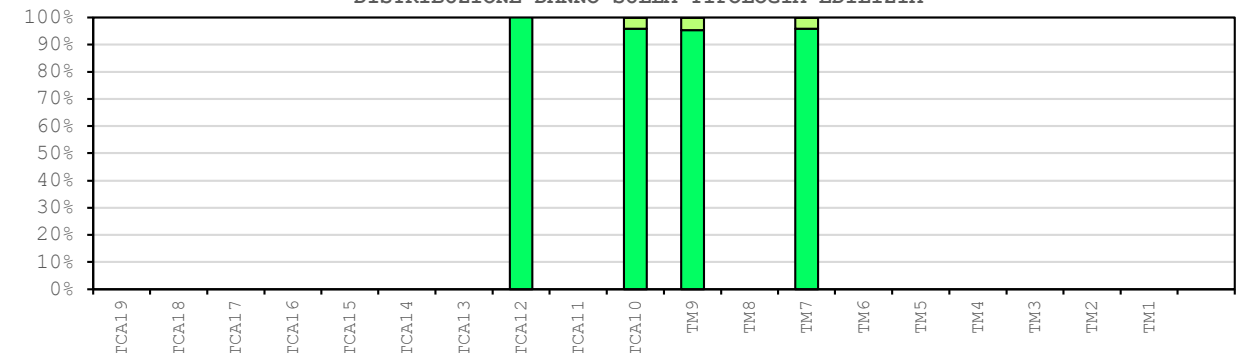
INCIDENZA TIPOLOGIE EDILIZIE

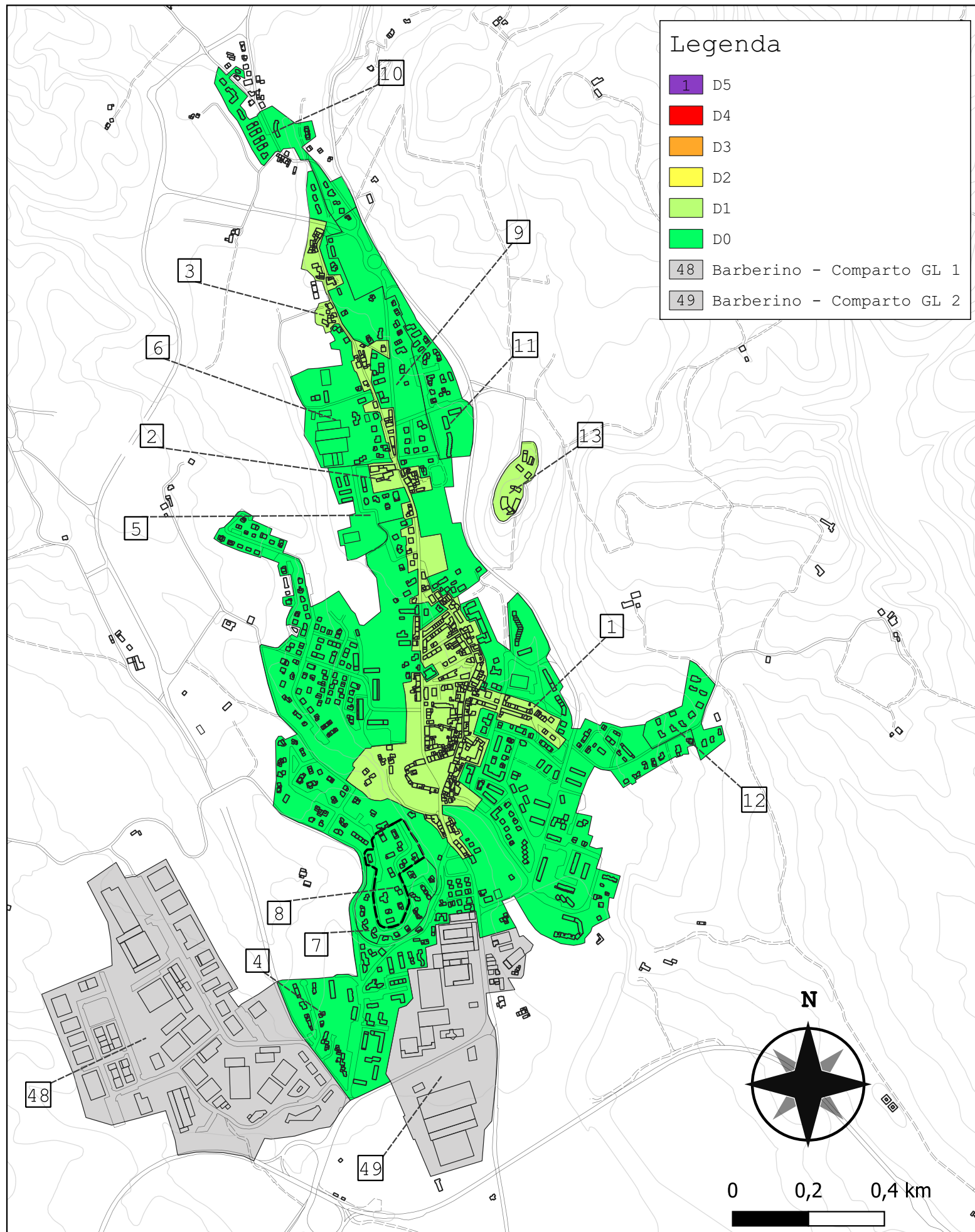


DANNO MEDIO TIPOLOGIE EDILIZIE



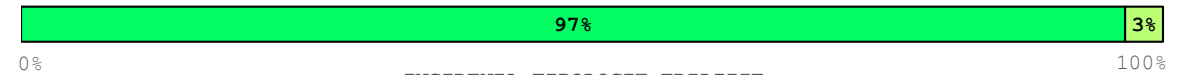
DISTRIBUZIONE DANNO SULLA TIPOLOGIA EDILIZIA



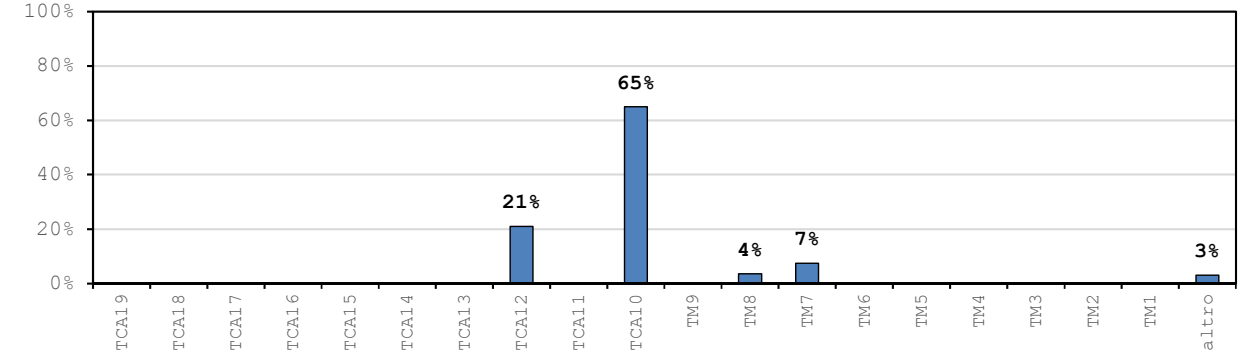


Comparto 8		Barberino 2E		$I_{EMS-98} = 6$ $PGA = 0.060g$				
Incidenza vol. comparto a livello comunale 0.7%								
Tipologie	Vol. [m ³]	D _{medio}	D0	D1	D2	D3	D4	D5
TM1	-	-	-	-	-	-	-	-
TM2	-	-	-	-	-	-	-	-
TM3	-	-	-	-	-	-	-	-
TM4	-	-	-	-	-	-	-	-
TM5	-	-	-	-	-	-	-	-
TM6	-	-	-	-	-	-	-	-
TM7	1 576	0.004	100%	0%	0%	0%	0%	0%
TM8	761	0.106	90%	10%	0%	0%	0%	0%
TM9	-	-	-	-	-	-	-	-
TCA10	13 883	0.044	96%	4%	0%	0%	0%	0%
TCA11	-	-	-	-	-	-	-	-
TCA12	4 504	0.000	100%	0%	0%	0%	0%	0%
TCA13	-	-	-	-	-	-	-	-
TCA14	-	-	-	-	-	-	-	-
TCA15	-	-	-	-	-	-	-	-
TCA16	-	-	-	-	-	-	-	-
TCA17	-	-	-	-	-	-	-	-
TCA18	-	-	-	-	-	-	-	-
TCA19	-	-	-	-	-	-	-	-
altro	661	-	-	-	-	-	-	-
tot.	21 384	0.034	97%	3%	0%	0%	0%	0%

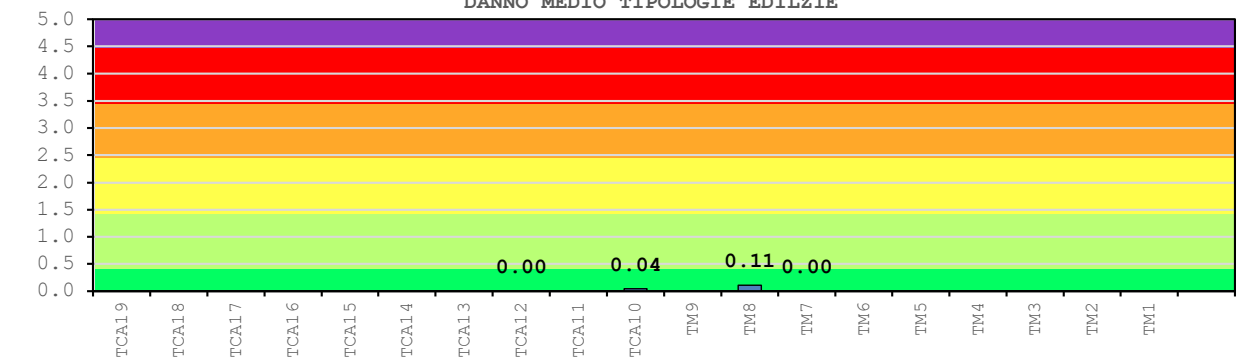
DISTRIBUZIONE DANNO SUL COMPARTO



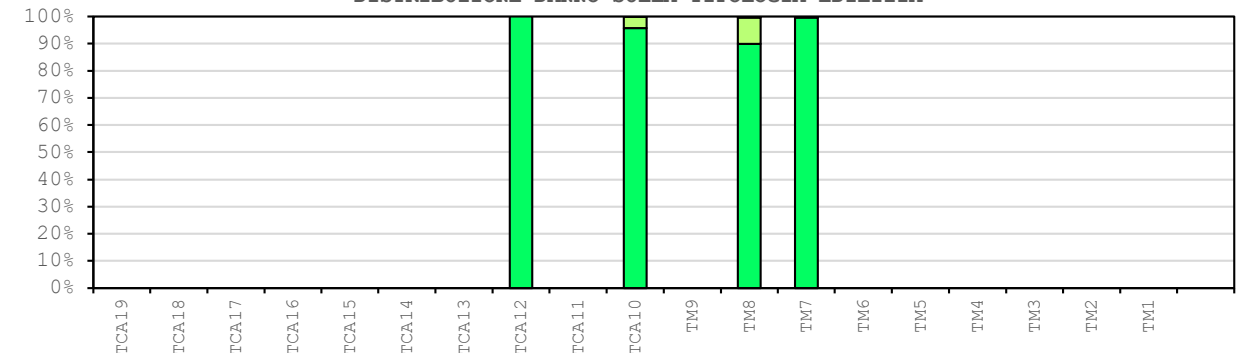
INCIDENZA TIPOLOGIE EDILIZIE

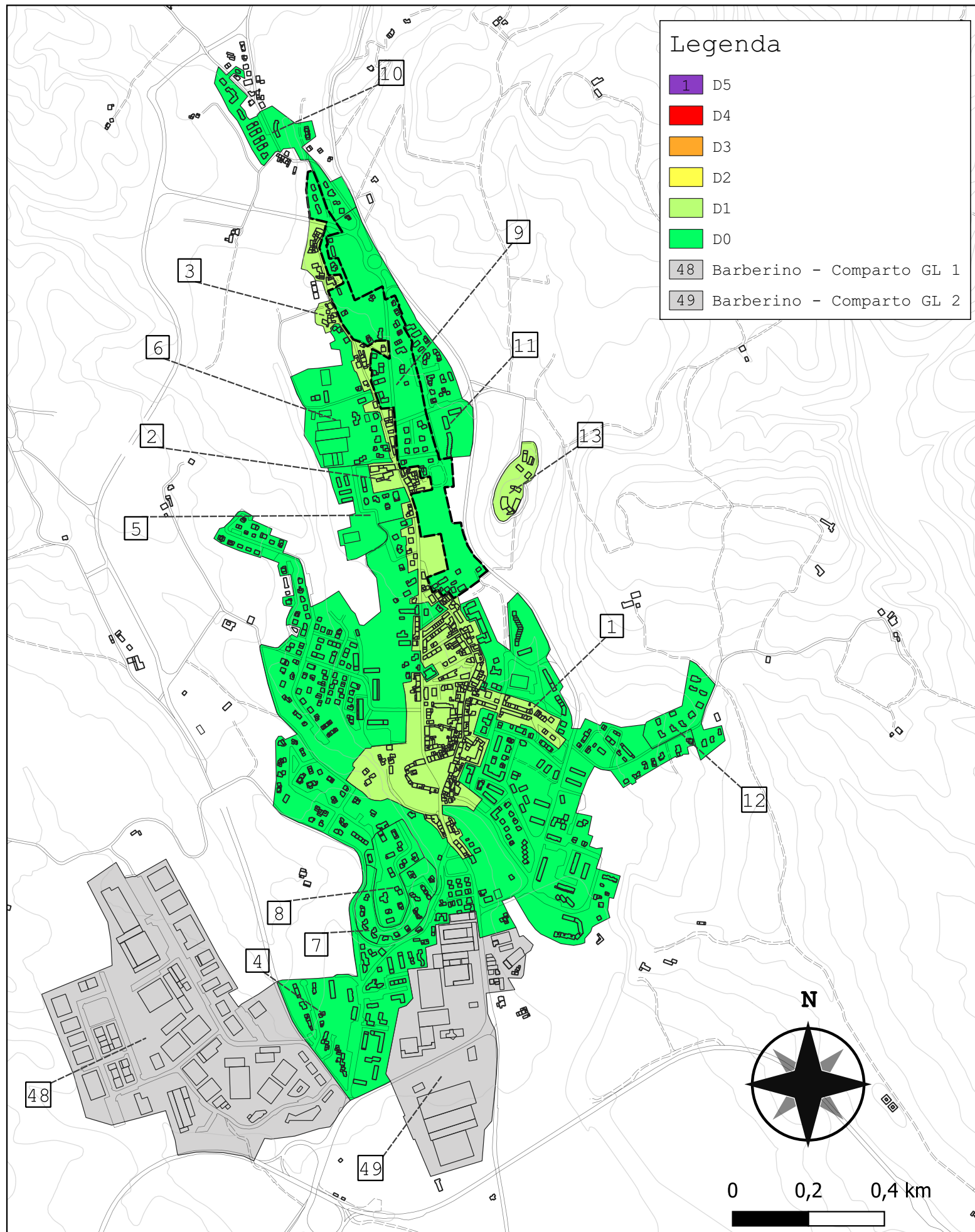


DANNO MEDIO TIPOLOGIE EDILIZIE



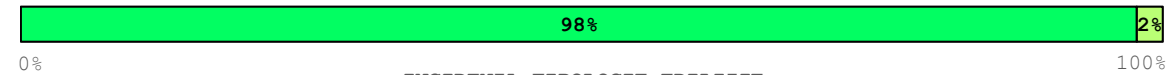
DISTRIBUZIONE DANNO SULLA TIPOLOGIA EDILIZIA



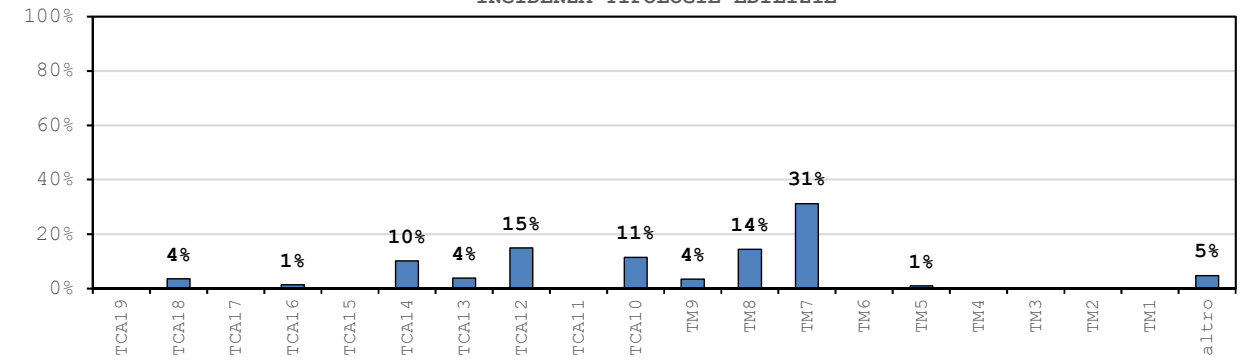


Comparto 9		Barberino 3		$I_{EMS-98} = 6$ $PGA = 0.060g$				
Incidenza vol. comparto a livello comunale 1.8%								
Tipologie	Vol. [m ³]	D _{medio}	D0	D1	D2	D3	D4	D5
TM1	-	-	-	-	-	-	-	-
TM2	-	-	-	-	-	-	-	-
TM3	-	-	-	-	-	-	-	-
TM4	-	-	-	-	-	-	-	-
TM5	549	0.289	74%	23%	3%	0%	0%	0%
TM6	-	-	-	-	-	-	-	-
TM7	17 238	0.010	99%	1%	0%	0%	0%	0%
TM8	7 920	0.075	93%	7%	0%	0%	0%	0%
TM9	1 931	0.007	99%	1%	0%	0%	0%	0%
TCA10	6 273	0.043	96%	4%	0%	0%	0%	0%
TCA11	-	-	-	-	-	-	-	-
TCA12	8 185	0.000	100%	0%	0%	0%	0%	0%
TCA13	2 098	0.000	100%	0%	0%	0%	0%	0%
TCA14	5 547	0.000	100%	0%	0%	0%	0%	0%
TCA15	-	-	-	-	-	-	-	-
TCA16	739	0.000	100%	0%	0%	0%	0%	0%
TCA17	-	-	-	-	-	-	-	-
TCA18	1 953	0.000	100%	0%	0%	0%	0%	0%
TCA19	-	-	-	-	-	-	-	-
altro	2 626	-	-	-	-	-	-	-
tot.	55 058	0.023	98%	2%	0%	0%	0%	0%

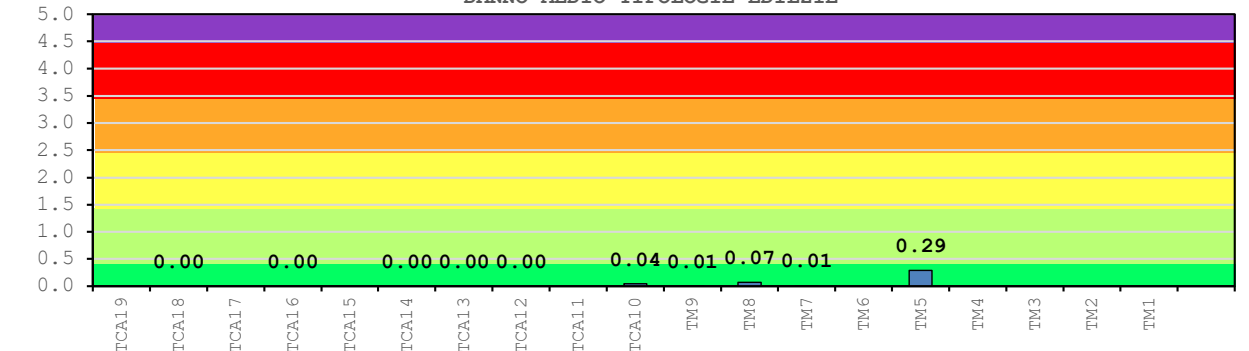
DISTRIBUZIONE DANNO SUL COMPARTO



INCIDENZA TIPOLOGIE EDILIZIE



DANNO MEDIO TIPOLOGIE EDILIZIE



DISTRIBUZIONE DANNO SULLA TIPOLOGIA EDILIZIA

