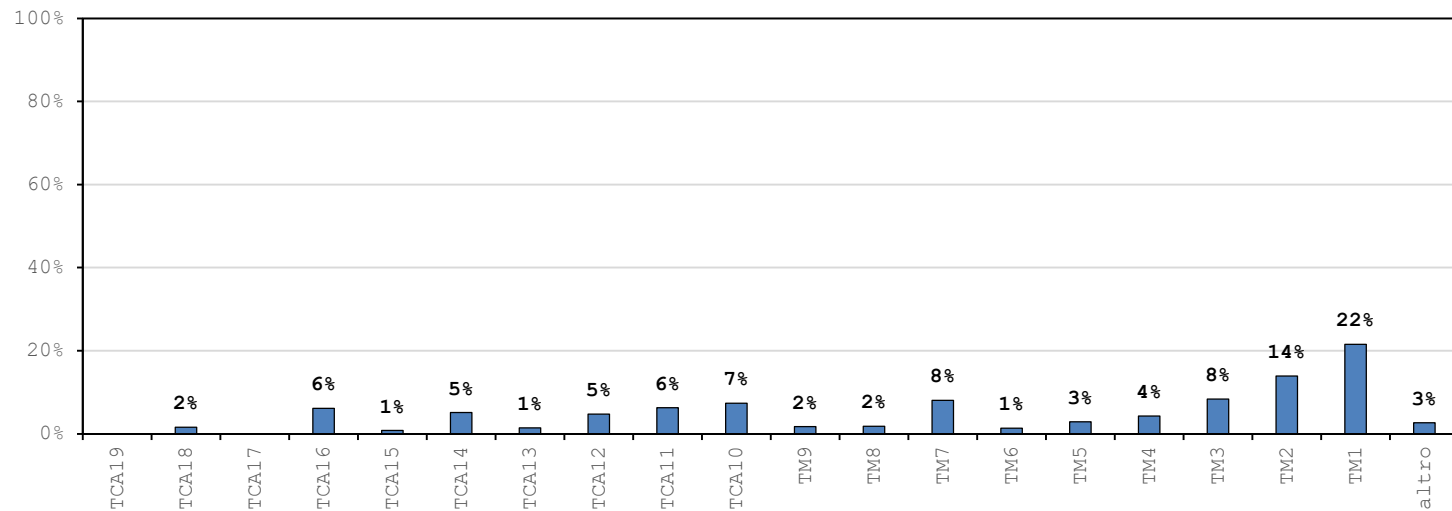
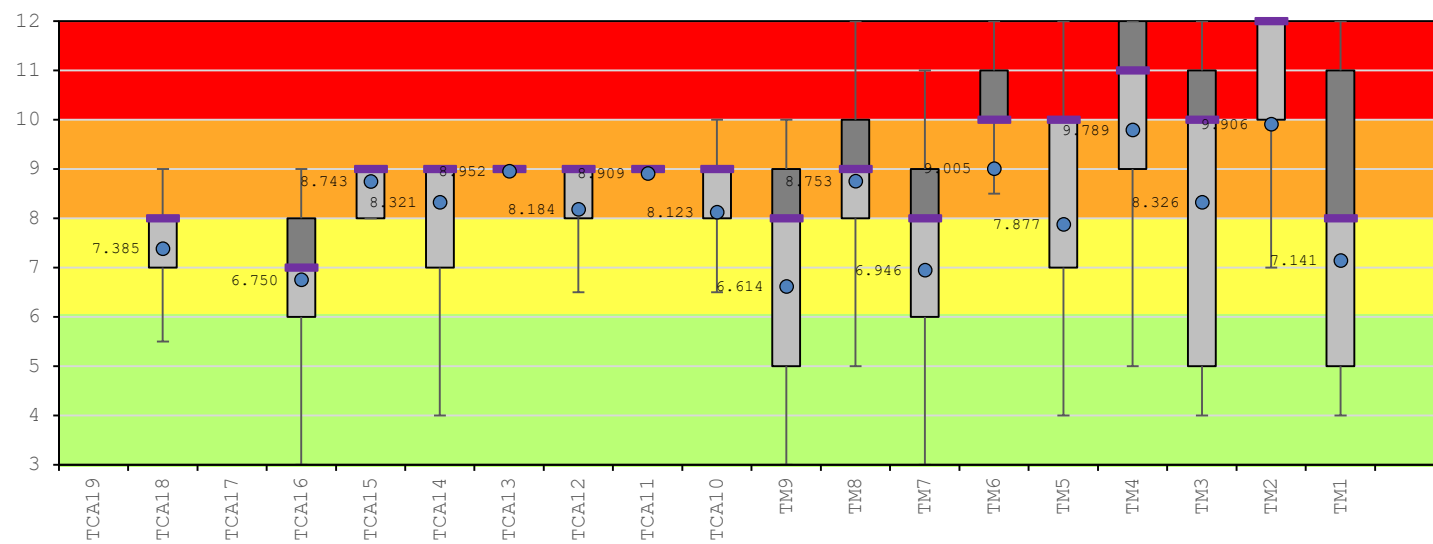


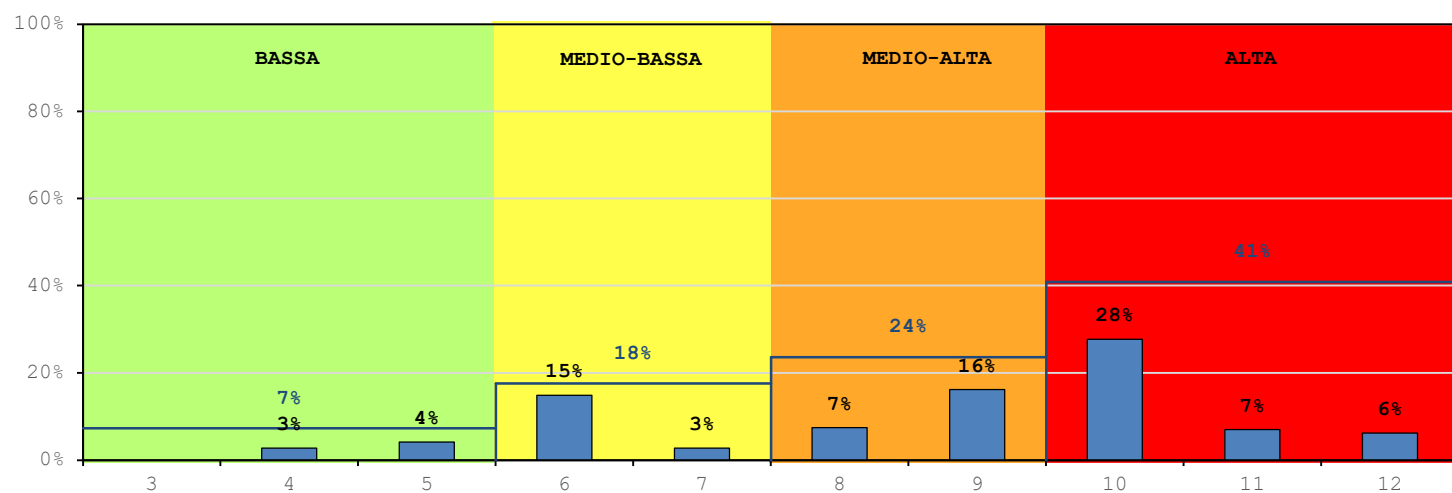
INCIDENZA TIPOLOGIE EDILIZIE



BOX PLOT RISCHIO TIPOLOGIE EDILIZIE - I_r



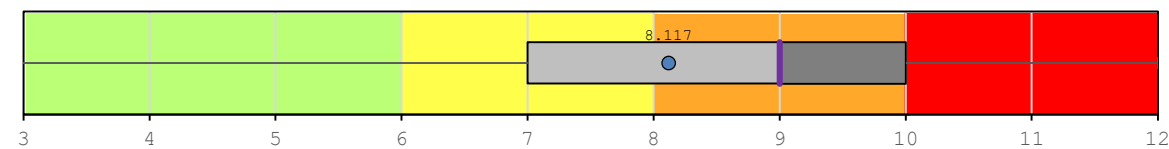
DISTRIBUZIONE RISCHIO NEL COMUNE - I_r



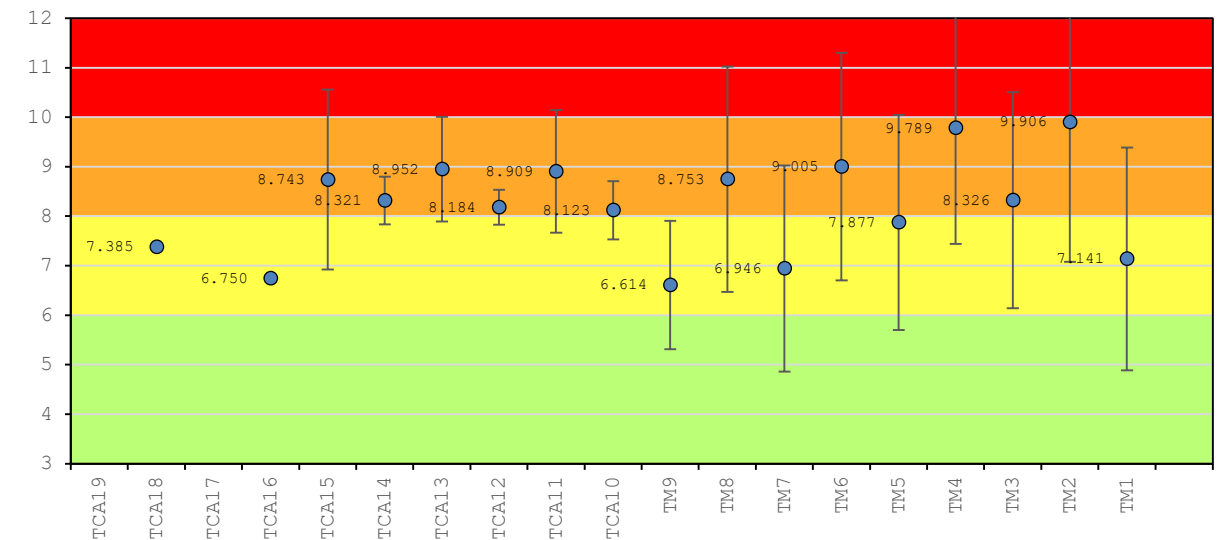
Tipologie significative a livello comunale

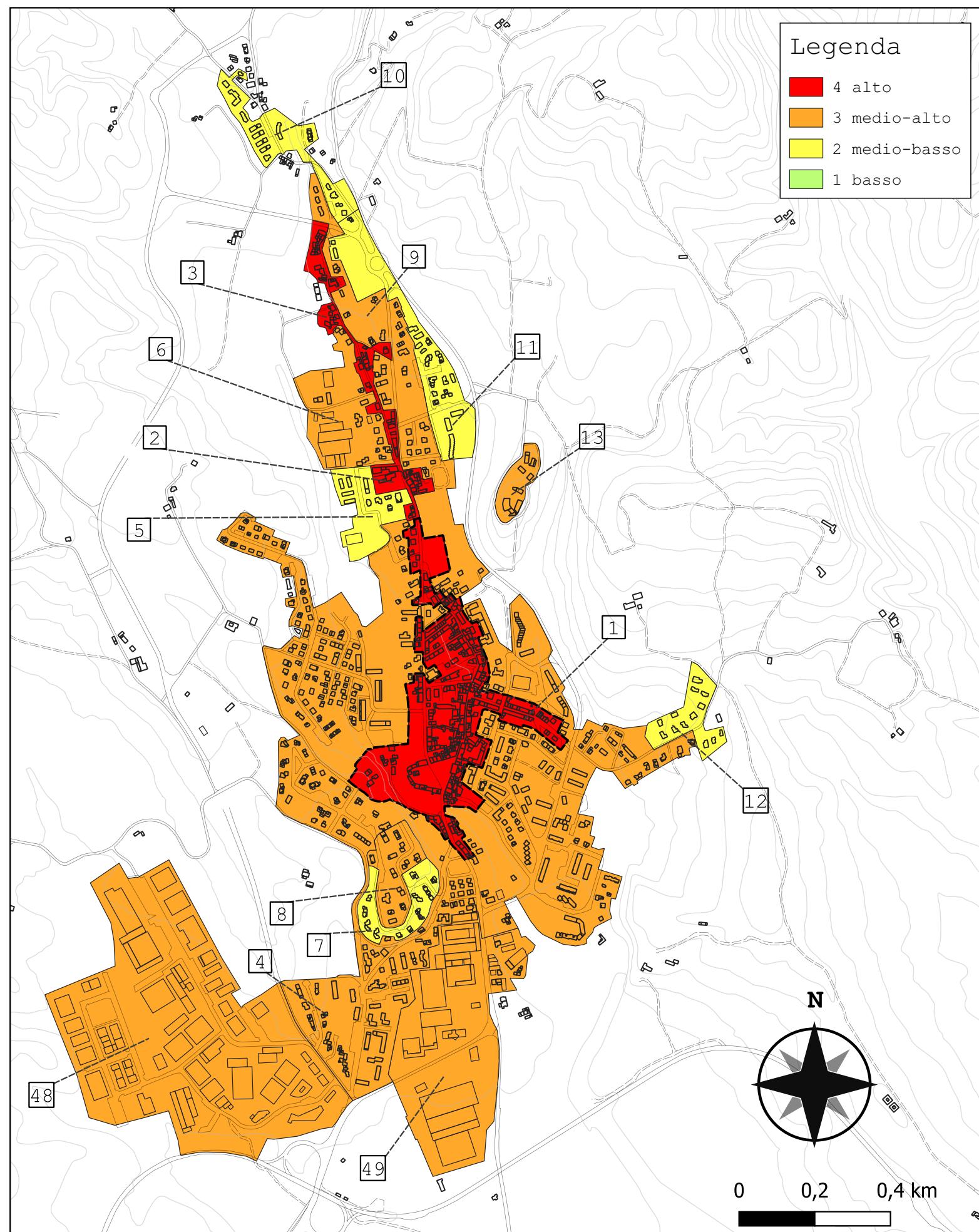
Tipologie	Num. Ed.	Vol. [m ³]	$I_{r,medico}$	stdev	COV
TM1	796	661 207	7.141	2.762	0.350
TM2	365	426 878	9.906	2.251	0.216
TM3	370	256 423	8.326	2.826	0.317
TM4	98	131 553	9.789	2.180	0.210
TM5	186	89 964	7.877	2.346	0.278
TM6	36	42 683	9.005	2.171	0.227
TM7	459	246 994	6.946	2.298	0.315
TM8	62	55 231	8.753	2.082	0.236
TM9	127	52 416	6.614	2.276	0.326
TCA10	300	225 499	8.123	1.295	0.157
TCA11	52	192 734	8.909	0.589	0.066
TCA12	167	144 861	8.184	1.238	0.152
TCA13	15	43 542	8.952	0.352	0.040
TCA14	247	158 242	8.321	1.058	0.129
TCA15	10	25 229	8.743	0.483	0.056
TCA16	171	189 566	6.750	1.816	0.280
TCA17	-	-	-	-	-
TCA18	41	48 571	7.385	2.178	0.319
TCA19	-	-	-	-	-
altro	80	82 663	-	-	-
tot.	3 582	3 074 256	8.117	2.470	0.299

BOX PLOT RISCHIO COMUNE



RISCHIO TIPOLOGIE EDILIZIE - I_r

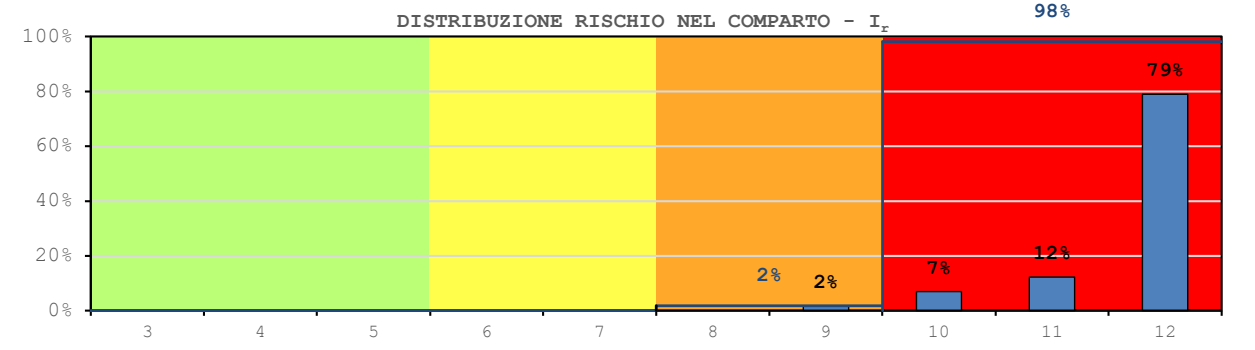
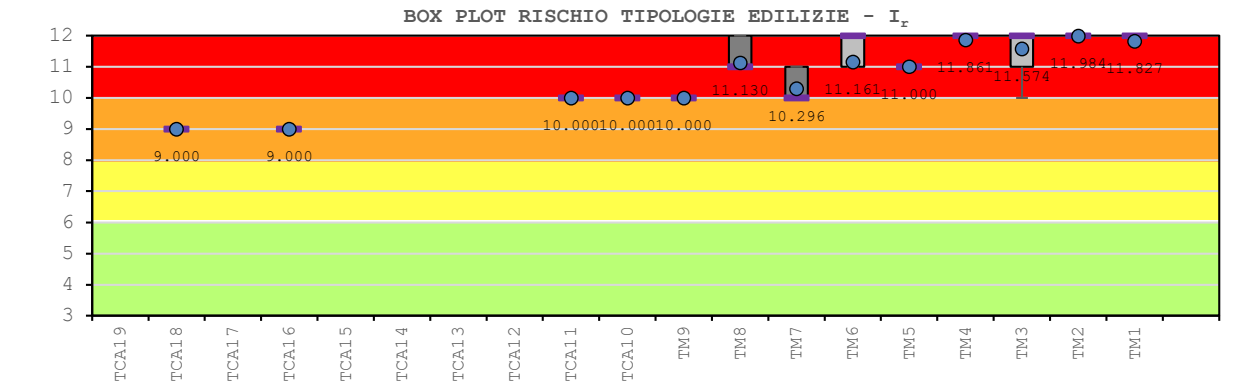
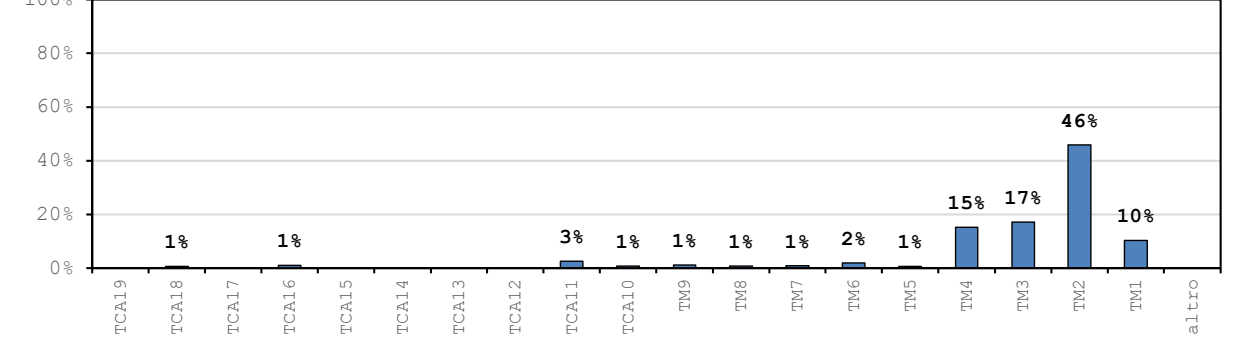
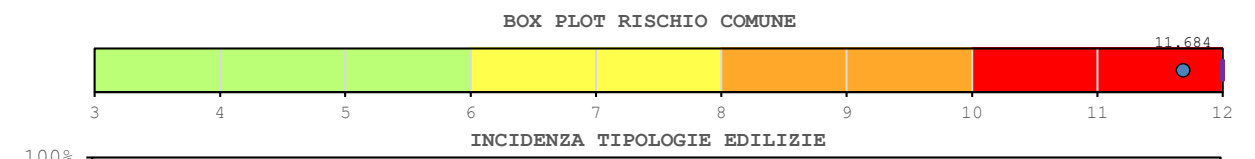


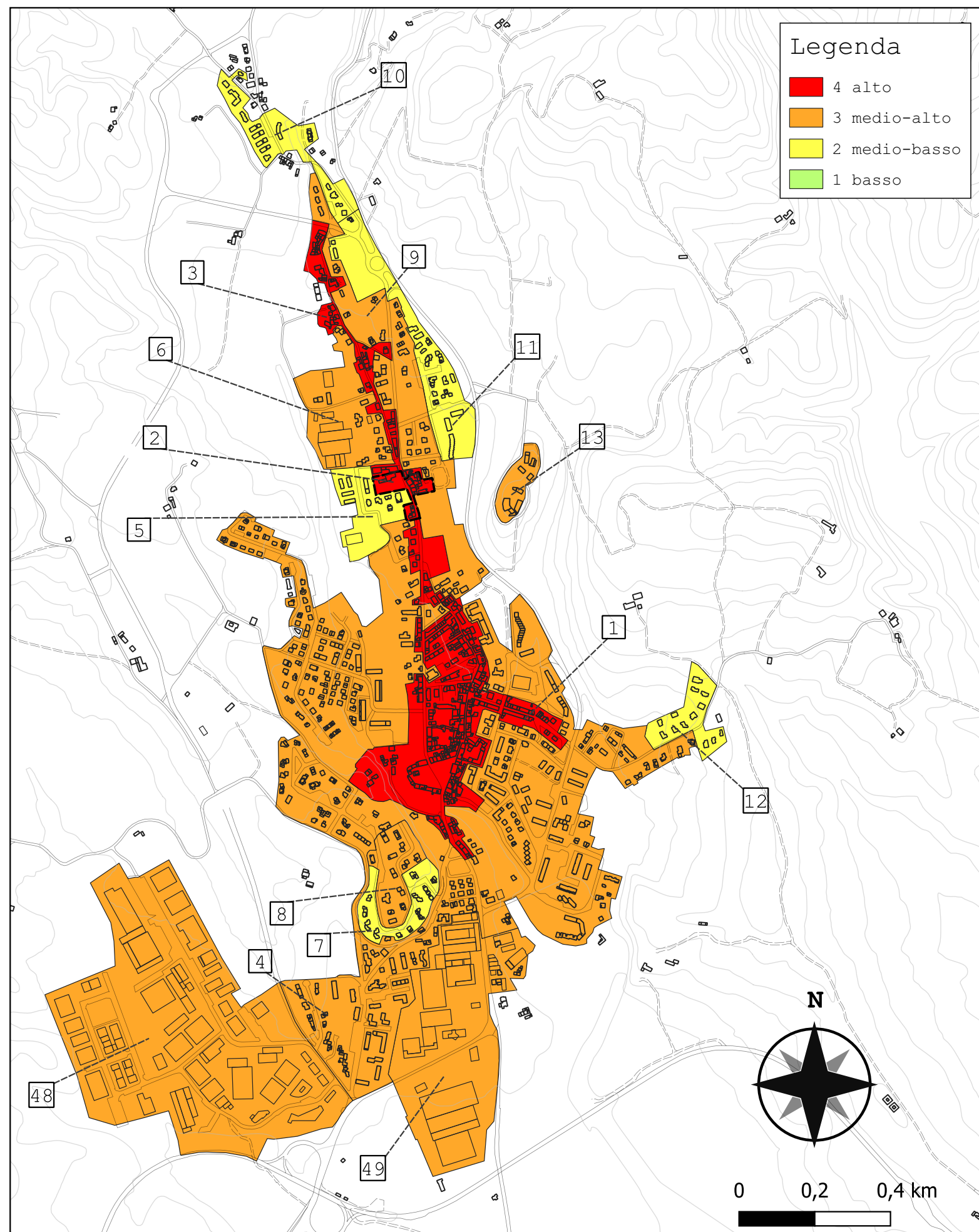


Legenda

- 4 alto
- 3 medio-alto
- 2 medio-basso
- 1 basso

Comparto 1		Barberino 1A			
Incidenza vol. comparto a livello comunale 9.9%					
Tipologie	Num. Ed.	Vol. [m ³]	I _{r,medio}	stdev	COV
TM1	64	31 846	11.827	0.350	0.030
TM2	143	139 768	11.984	0.144	0.012
TM3	93	52 071	11.574	0.497	0.042
TM4	51	46 350	11.861	0.619	0.053
TM5	8	2 306	11.000	0.000	0.000
TM6	4	6 168	11.161	0.577	0.050
TM7	6	2 948	10.296	0.516	0.050
TM8	8	2 446	11.130	0.463	0.041
TM9	10	3 712	10.000	0.000	0.000
TCA10	3	2 593	10.000	0.000	0.000
TCA11	1	7 890	10.000	-	-
TCA12	-	-	-	-	-
TCA13	-	-	-	-	-
TCA14	-	-	-	-	-
TCA15	-	-	-	-	-
TCA16	1	3 242	9.000	-	-
TCA17	-	-	-	-	-
TCA18	3	2 283	9.000	0.000	0.000
TCA19	-	-	-	-	-
altro	0	0	-	-	-
tot.	395	303 621	11.684	0.629	0.053

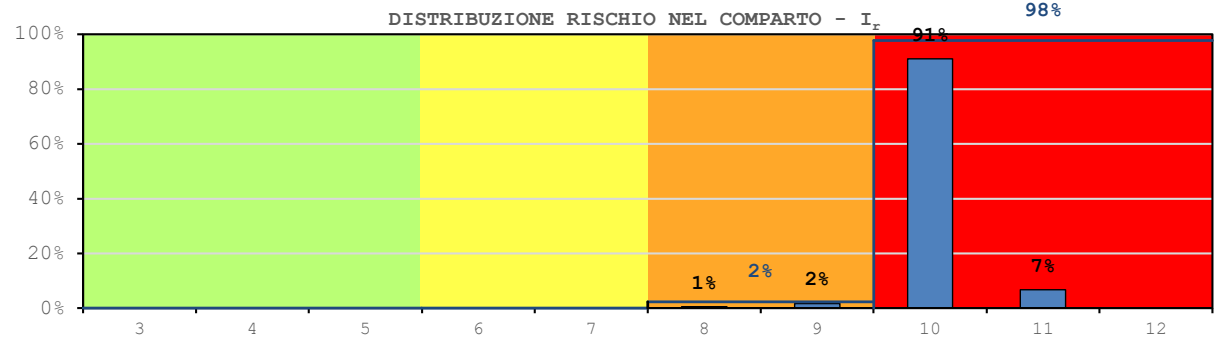
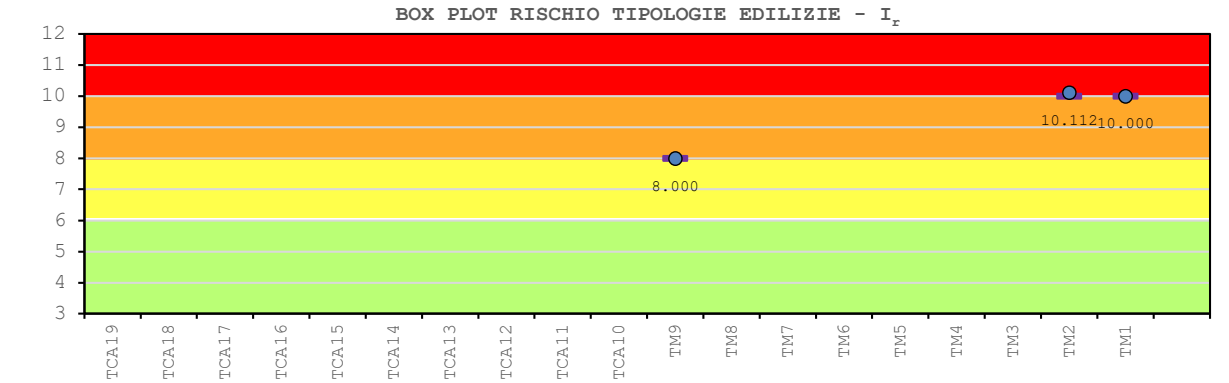
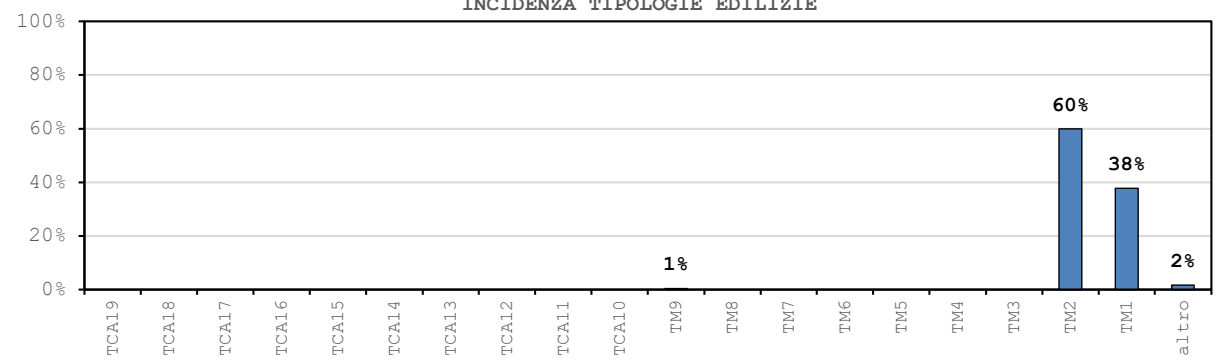
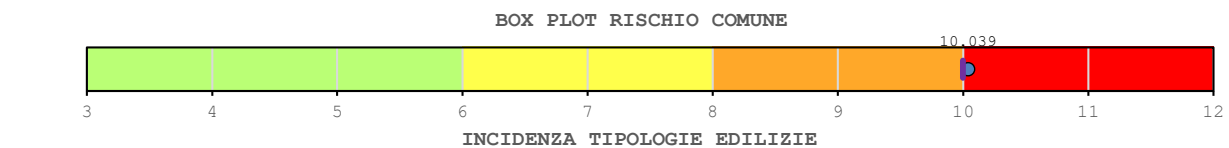


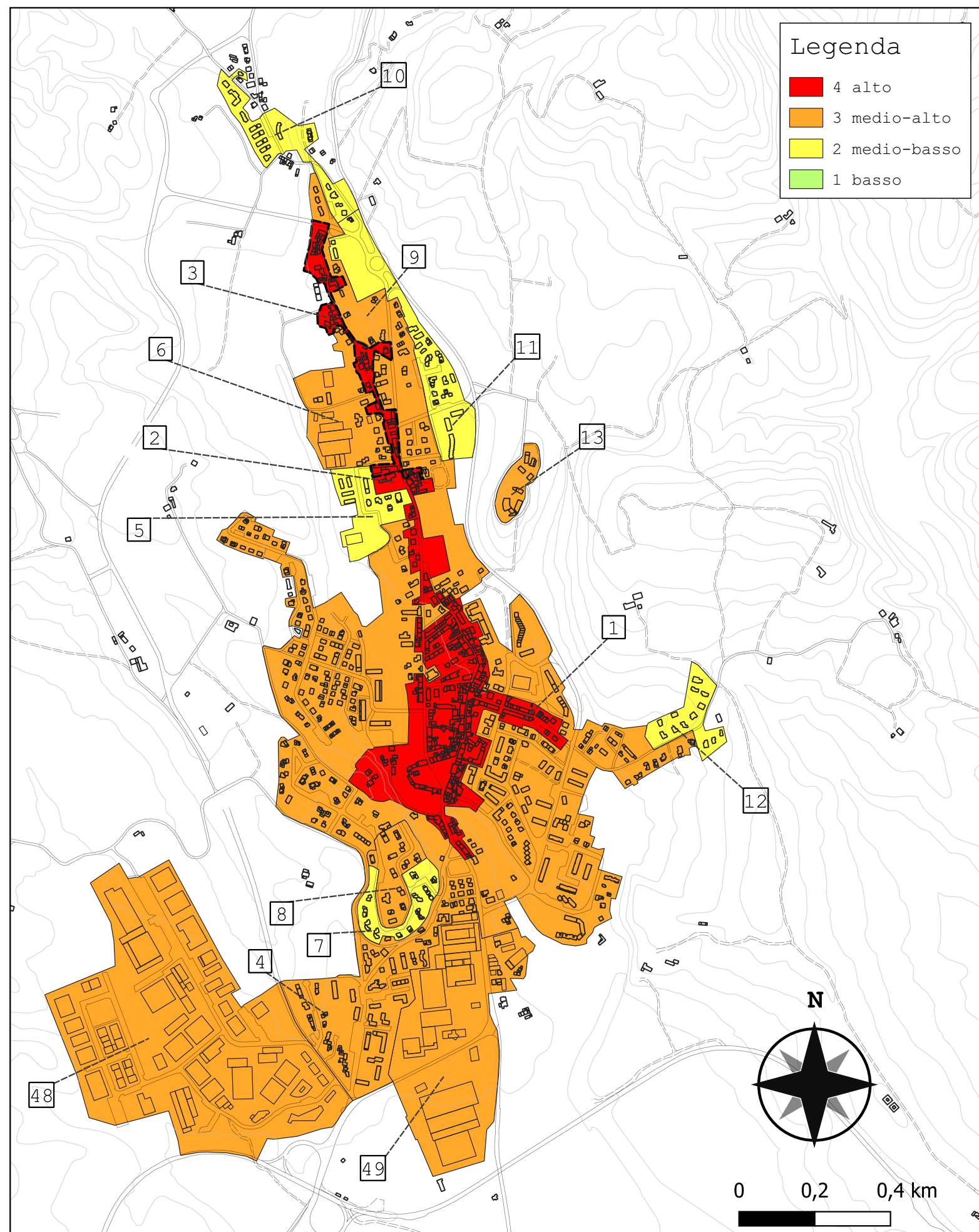


Legenda

- 4 alto
- 3 medio-alto
- 2 medio-basso
- 1 basso

Comparto 2		Barberino 1B			
Incidenza vol. comparto a livello comunale 0.5%					
Tipologie	Num. Ed.	Vol. [m ³]	$I_{r,medio}$	stdev	COV
TM1	7	6 248	10.000	0.000	0.000
TM2	16	9 923	10.112	0.342	0.034
TM3	-	-	-	-	-
TM4	-	-	-	-	-
TM5	-	-	-	-	-
TM6	-	-	-	-	-
TM7	-	-	-	-	-
TM8	-	-	-	-	-
TM9	1	86	8.000	-	-
TCA10	-	-	-	-	-
TCA11	-	-	-	-	-
TCA12	-	-	-	-	-
TCA13	-	-	-	-	-
TCA14	-	-	-	-	-
TCA15	-	-	-	-	-
TCA16	-	-	-	-	-
TCA17	-	-	-	-	-
TCA18	-	-	-	-	-
TCA19	-	-	-	-	-
altro	1	291	-	-	-
tot.	25	16 547	10.039	0.539	0.053

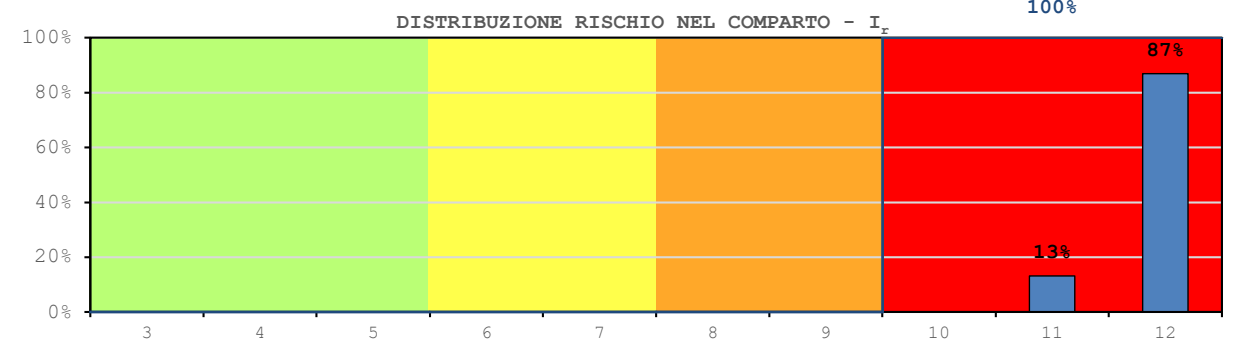
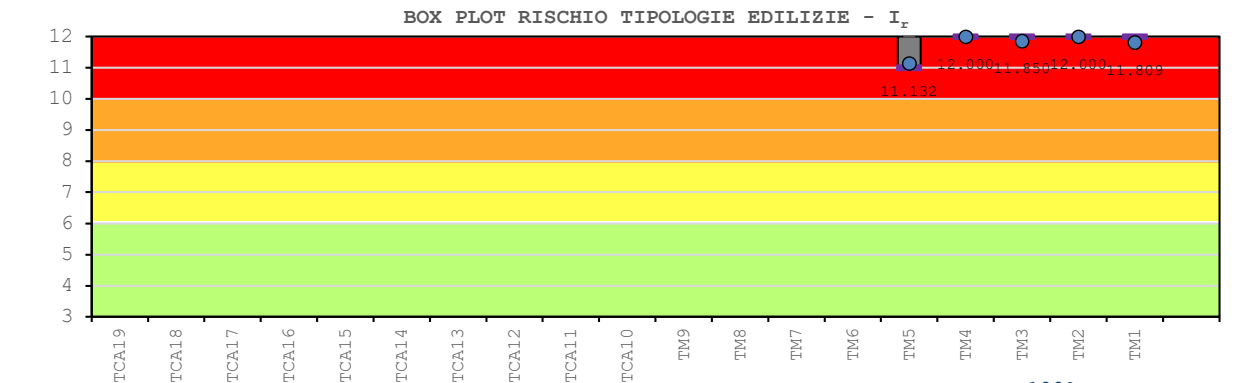
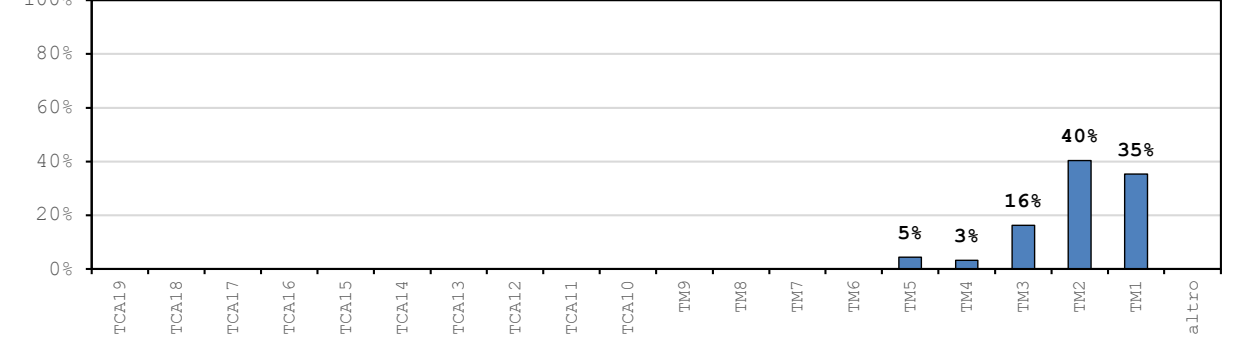
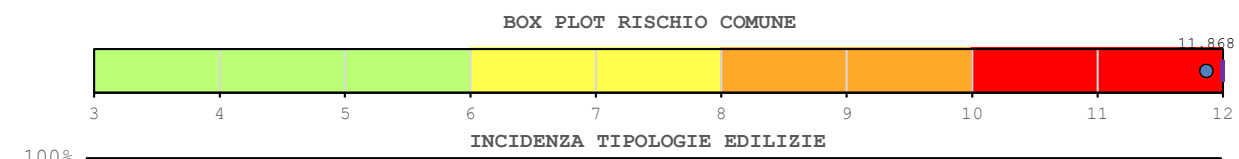


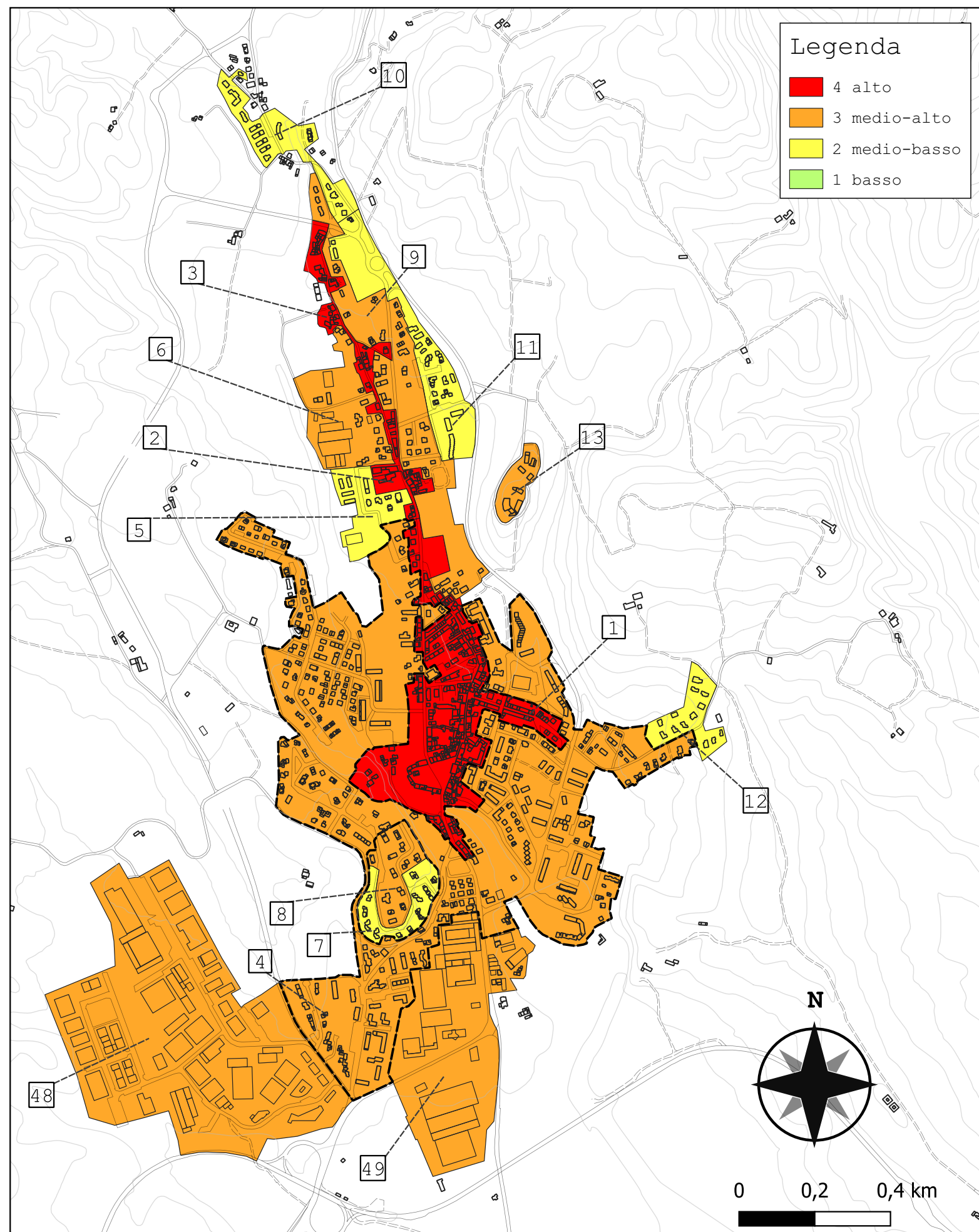


Legenda

- 4 alto
- 3 medio-alto
- 2 medio-basso
- 1 basso

Comparto 3		Barberino IC			
Incidenza vol. comparto a livello comunale 1.6%					
Tipologie	Num. Ed.	Vol. [m ³]	I _{r,medio}	stdev	COV
TM1	28	16 892	11.809	0.315	0.026
TM2	26	19 350	12.000	0.000	0.000
TM3	14	7 816	11.850	0.426	0.036
TM4	2	1 590	12.000	0.000	0.000
TM5	5	2 173	11.132	0.548	0.048
TM6	-	-	-	-	-
TM7	-	-	-	-	-
TM8	-	-	-	-	-
TM9	-	-	-	-	-
TCA10	-	-	-	-	-
TCA11	-	-	-	-	-
TCA12	-	-	-	-	-
TCA13	-	-	-	-	-
TCA14	-	-	-	-	-
TCA15	-	-	-	-	-
TCA16	-	-	-	-	-
TCA17	-	-	-	-	-
TCA18	-	-	-	-	-
TCA19	-	-	-	-	-
altro	0	0	-	-	-
tot.	75	47 821	11.868	0.327	0.028

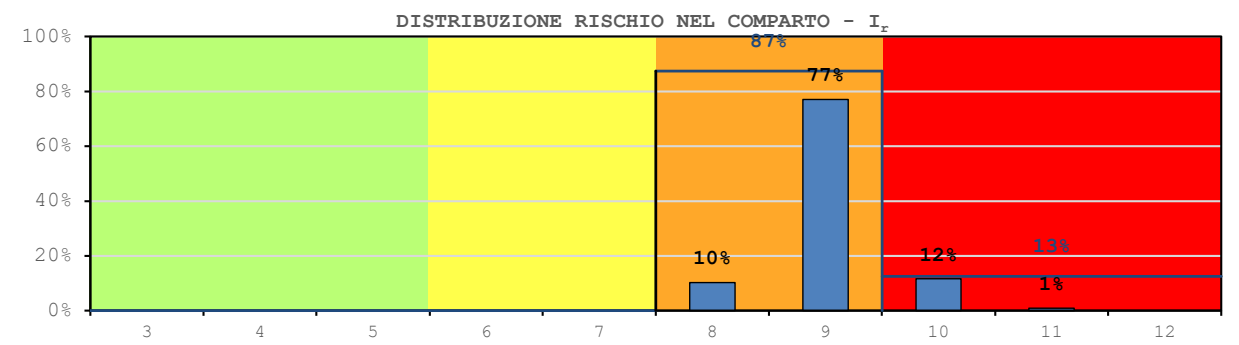
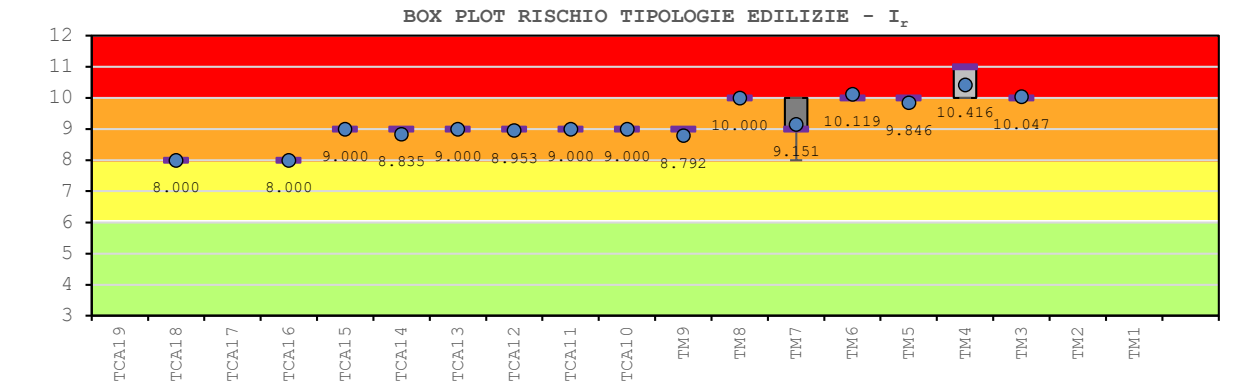
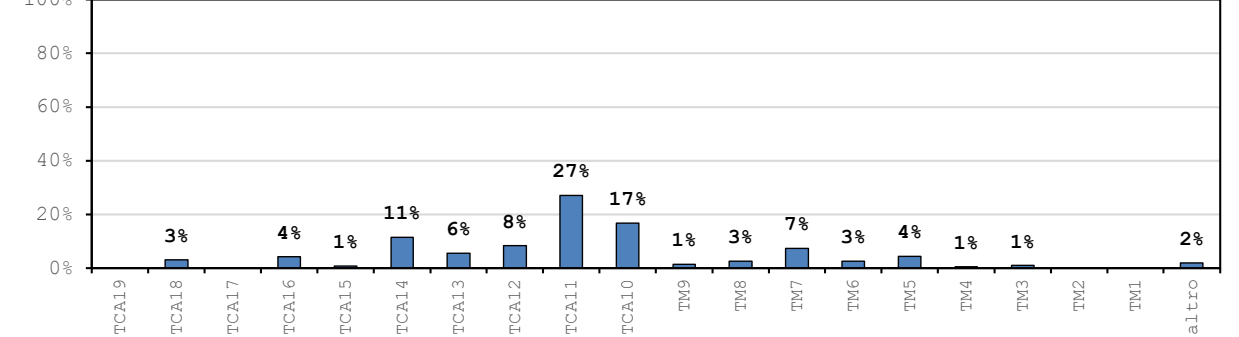
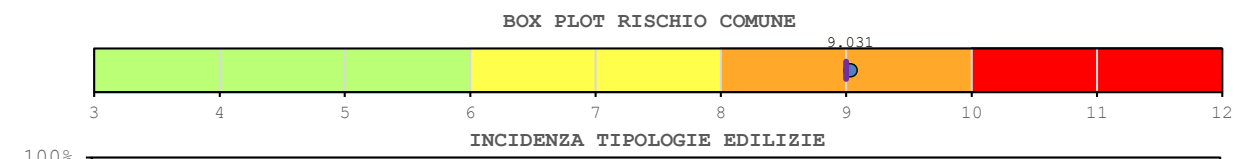


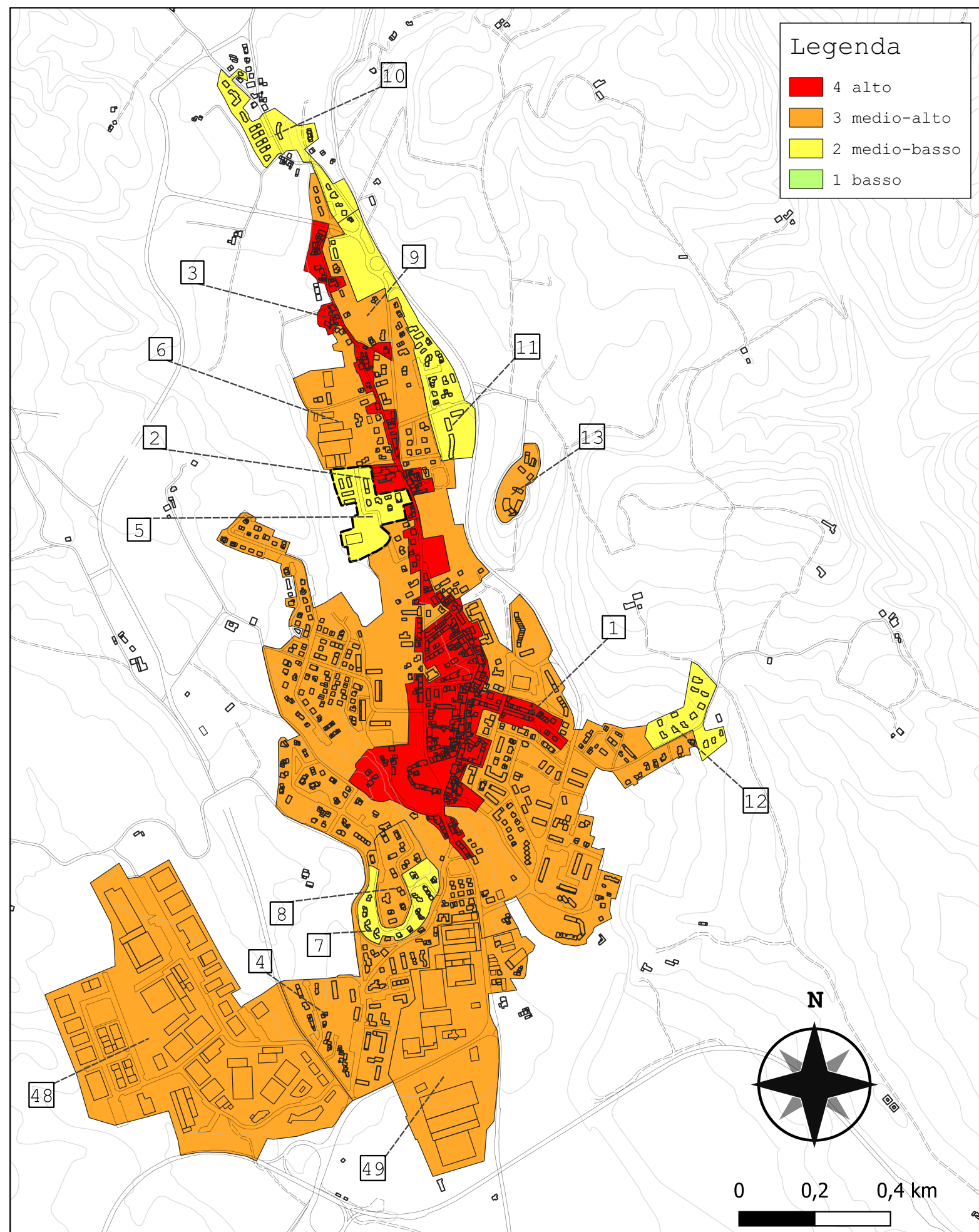


Legenda

- 4 alto
- 3 medio-alto
- 2 medio-basso
- 1 basso

Comparto 4		Barberino 2A			
Incidenza vol. comparto a livello comunale 19.6%					
Tipologie	Num. Ed.	Vol. [m ³]	I _{r,medio}	stdev	COV
TM1	-	-	-	-	-
TM2	-	-	-	-	-
TM3	11	6 182	10.047	0.302	0.030
TM4	3	3 707	10.416	0.577	0.054
TM5	54	26 576	9.846	0.317	0.032
TM6	8	15 976	10.119	0.354	0.035
TM7	91	44 876	9.151	0.490	0.053
TM8	14	15 542	10.000	0.000	0.000
TM9	21	8 815	8.792	0.402	0.046
TCA10	141	101 276	9.000	0.000	0.000
TCA11	46	163 287	9.000	0.000	0.000
TCA12	64	50 998	8.953	0.244	0.027
TCA13	9	33 653	9.000	0.000	0.000
TCA14	103	69 011	8.835	0.334	0.038
TCA15	4	5 097	9.000	0.000	0.000
TCA16	17	25 692	8.000	0.000	0.000
TCA17	-	-	-	-	-
TCA18	7	19 278	8.000	0.000	0.000
TCA19	-	-	-	-	-
altro	8	11 815	-	-	-
tot.	601	601 781	9.031	0.533	0.059

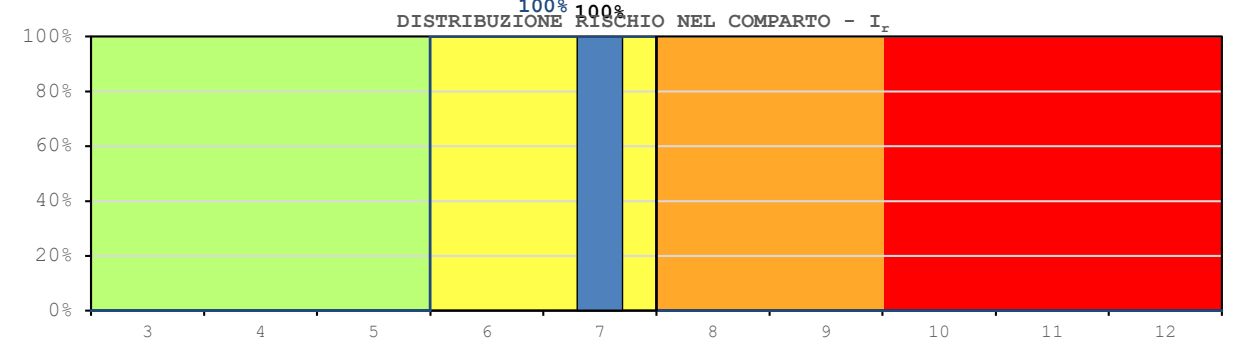
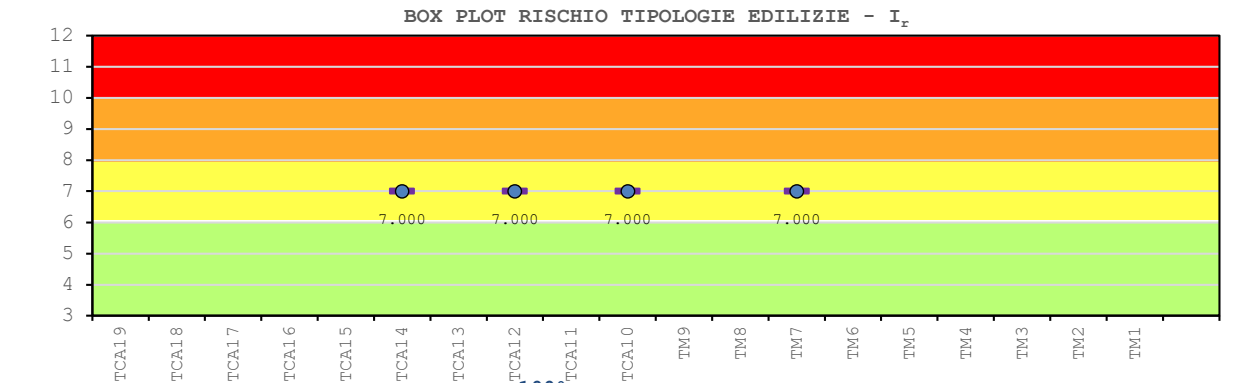
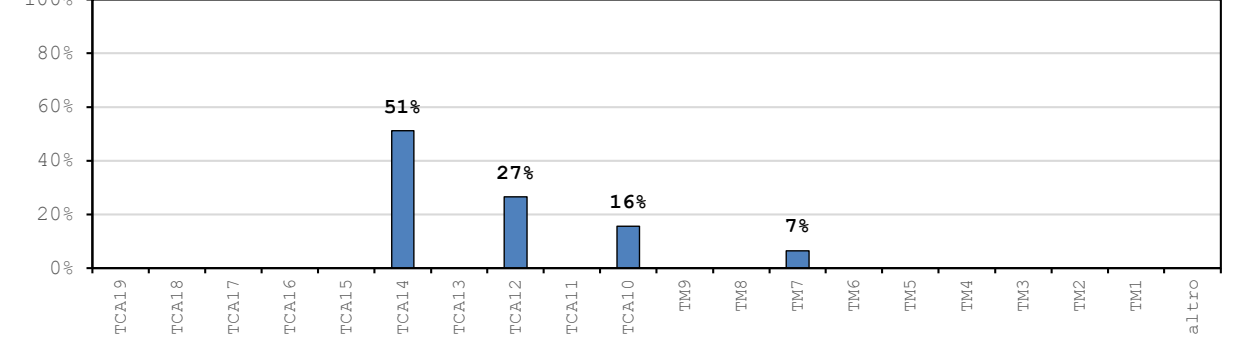
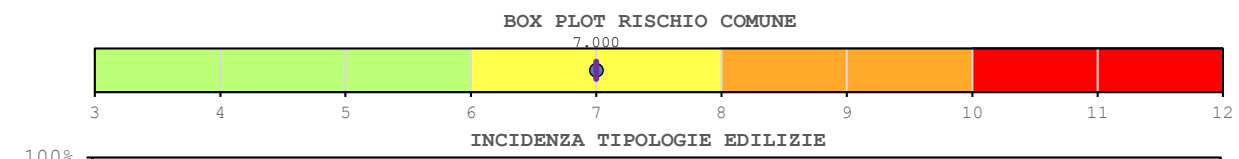


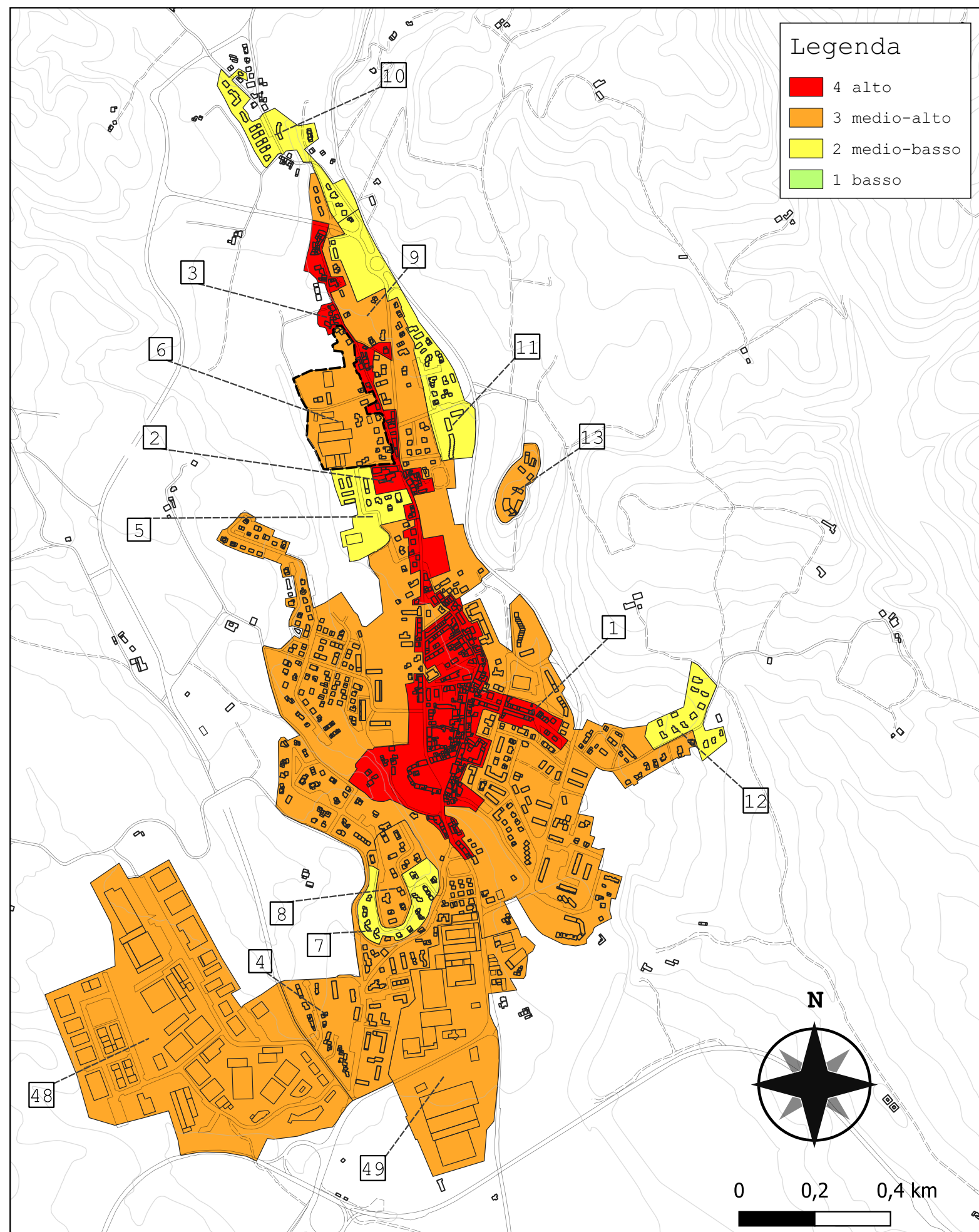


Legenda

- 4 alto
- 3 medio-alto
- 2 medio-basso
- 1 basso

Comparto 5		Barberino 2B			
Incidenza vol. comparto a livello comunale 0.5%					
Tipologie	Num. Ed.	Vol. [m ³]	I _{r,medio}	stdev	COV
TM1	-	-	-	-	-
TM2	-	-	-	-	-
TM3	-	-	-	-	-
TM4	-	-	-	-	-
TM5	-	-	-	-	-
TM6	-	-	-	-	-
TM7	1	1 005	7.000	-	-
TM8	-	-	-	-	-
TM9	-	-	-	-	-
TCA10	2	2 386	7.000	0.000	0.000
TCA11	-	-	-	-	-
TCA12	2	4 063	7.000	0.000	0.000
TCA13	-	-	-	-	-
TCA14	9	7 821	7.000	0.000	0.000
TCA15	-	-	-	-	-
TCA16	-	-	-	-	-
TCA17	-	-	-	-	-
TCA18	-	-	-	-	-
TCA19	-	-	-	-	-
altro	0	0	-	-	-
tot.	14	15 275	7.000	0.000	0.000





Legenda

- 4 alto
- 3 medio-alto
- 2 medio-basso
- 1 basso

Comparto 6		Barberino 2C			
Incidenza vol. comparto a livello comunale 0.6%					
Tipologie	Num. Ed.	Vol. [m ³]	I _{r,medio}	stdev	COV
TM1	-	-	-	-	-
TM2	-	-	-	-	-
TM3	-	-	-	-	-
TM4	-	-	-	-	-
TM5	-	-	-	-	-
TM6	-	-	-	-	-
TM7	14	9 790	8.385	0.469	0.057
TM8	3	1 577	9.000	0.000	0.000
TM9	1	2 479	8.000	-	-
TCA10	-	-	-	-	-
TCA11	-	-	-	-	-
TCA12	3	1 898	8.000	0.000	0.000
TCA13	-	-	-	-	-
TCA14	-	-	-	-	-
TCA15	-	-	-	-	-
TCA16	3	1 342	7.000	0.000	0.000
TCA17	-	-	-	-	-
TCA18	-	-	-	-	-
TCA19	-	-	-	-	-
altro	0	0	-	-	-
tot.	24	17 086	8.235	0.637	0.071

