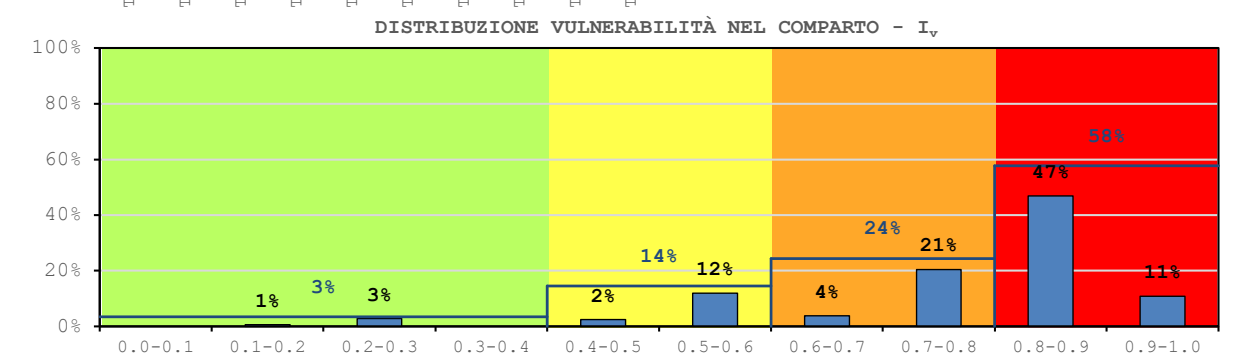
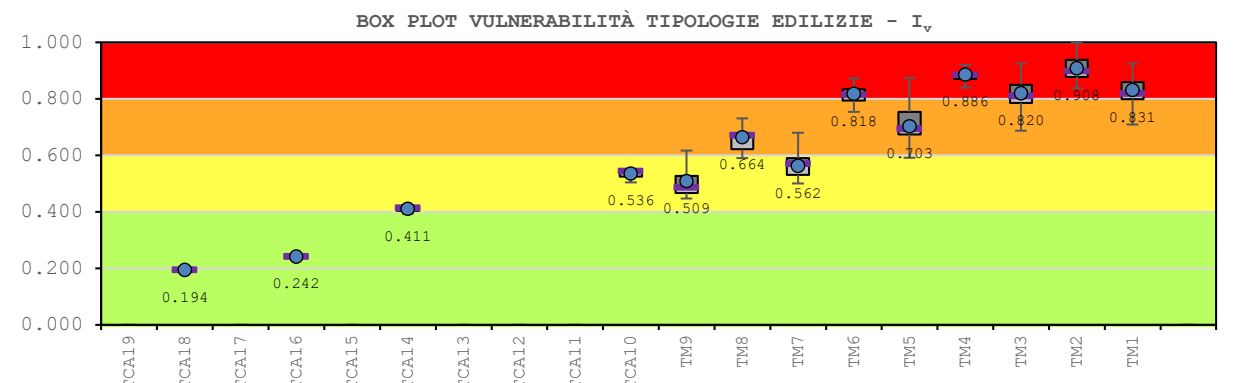
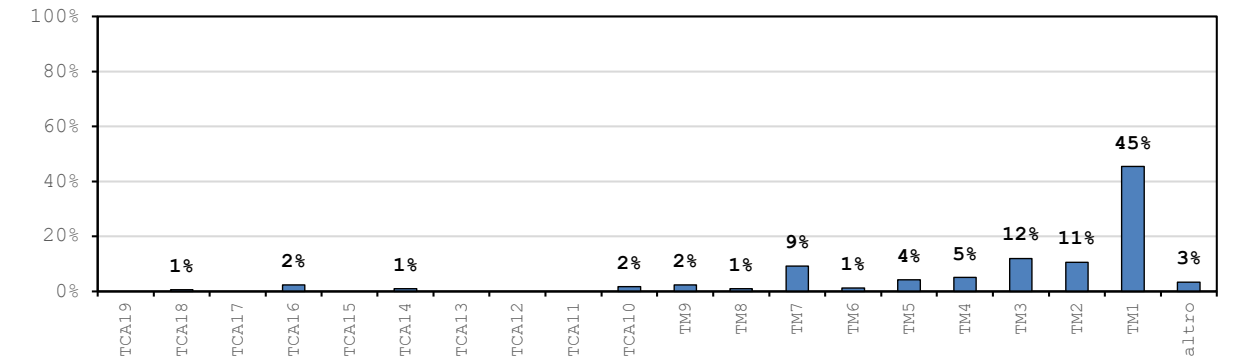
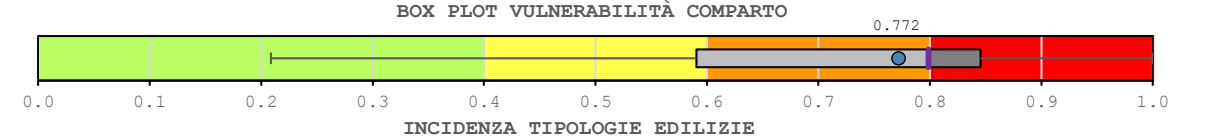


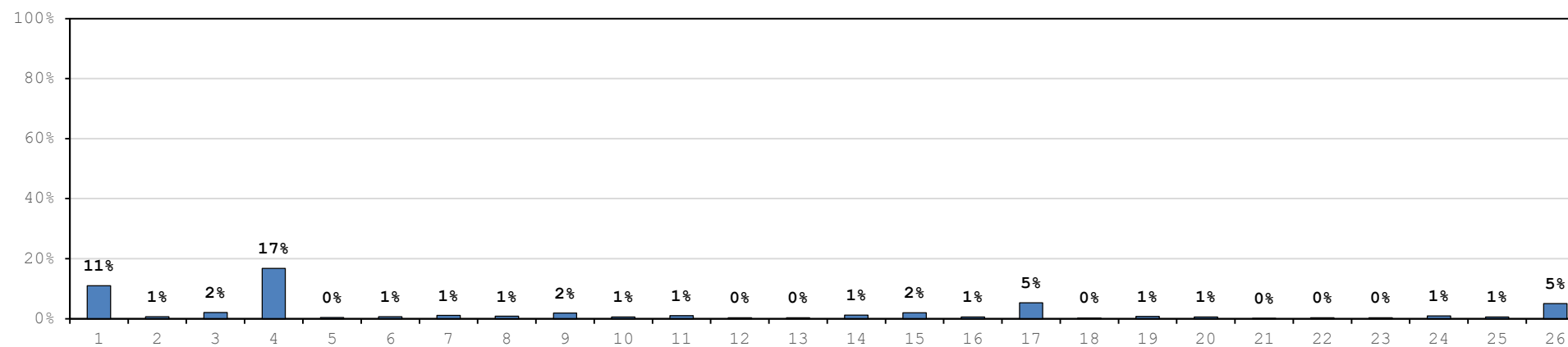
Comparto 52		Zona rurale			
Incidenza vol. comparto a livello comunale 33.8%					
Tipologie	Num. Ed.	Vol. [m <sup>3</sup> ]	I <sub>v,medio</sub>	stdev	COV
TM1	479	471 916	0.831	0.045	0.054
TM2	67	110 505	0.908	0.045	0.049
TM3	148	124 624	0.820	0.050	0.061
TM4	19	53 351	0.886	0.031	0.035
TM5	68	42 731	0.703	0.057	0.080
TM6	8	12 868	0.818	0.035	0.043
TM7	179	95 181	0.562	0.046	0.080
TM8	13	9 414	0.664	0.039	0.060
TM9	48	24 646	0.509	0.062	0.123
TCA10	16	18 740	0.536	0.013	0.024
TCA11	-	-	-	-	-
TCA12	-	-	-	-	-
TCA13	-	-	-	-	-
TCA14	33	9 388	0.411	0.008	0.018
TCA15	-	-	-	-	-
TCA16	36	23 696	0.242	0.000	0.000
TCA17	-	-	-	-	-
TCA18	10	6 202	0.194	0.000	0.000
TCA19	-	-	-	-	-
altro	41	35 423	-	-	-
tot.	1 165	1 038 684	0.772	0.176	0.228



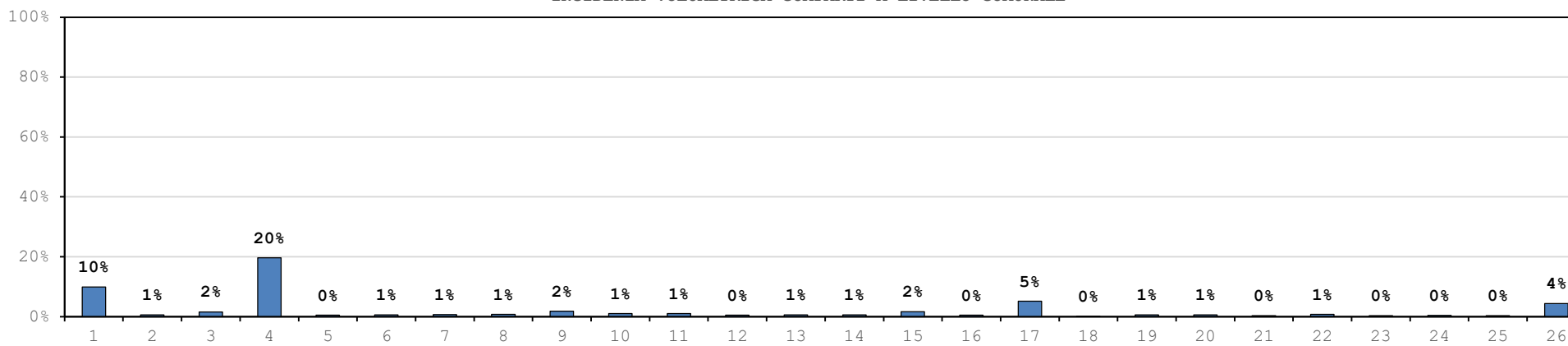
Comparti a livello comunale

Comparto	Num. Ed.	Vol. [m <sup>3</sup> ]	I <sub>v,medio</sub>	stdev	COV
1	395	303 621	0.832	0.119	0.143
2	25	16 547	0.900	0.096	0.108
3	75	47 821	0.861	0.060	0.070
4	601	601 781	0.505	0.114	0.220
5	14	15 275	0.446	0.054	0.124
6	24	17 086	0.533	0.128	0.243
7	39	19 473	0.494	0.058	0.113
8	31	21 384	0.518	0.035	0.067
9	69	55 058	0.513	0.103	0.205
10	21	29 733	0.235	0.014	0.060
11	36	30 814	0.234	0.021	0.089
12	13	14 568			
13	13	17 069	0.804	0.079	0.101
14	42	18 085	0.866	0.079	0.095
15	72	49 251	0.881	0.067	0.077
16	21	13 794	0.491	0.097	0.192
17	190	157 797	0.493	0.109	0.217
18	10	3 521	0.500	0.043	0.083
19	28	16 918	0.482	0.046	0.093
20	21	15 482	0.313	0.095	0.276
21	5	7 541	0.242	0.000	0.000
22	12	21 161	0.242	0.000	0.000
23	13	8 012	0.242	0.000	0.000
24	33	10 901	0.872	0.033	0.039
25	20	9 033	0.377	0.109	0.218
26	180	133 014	0.836	0.104	0.131

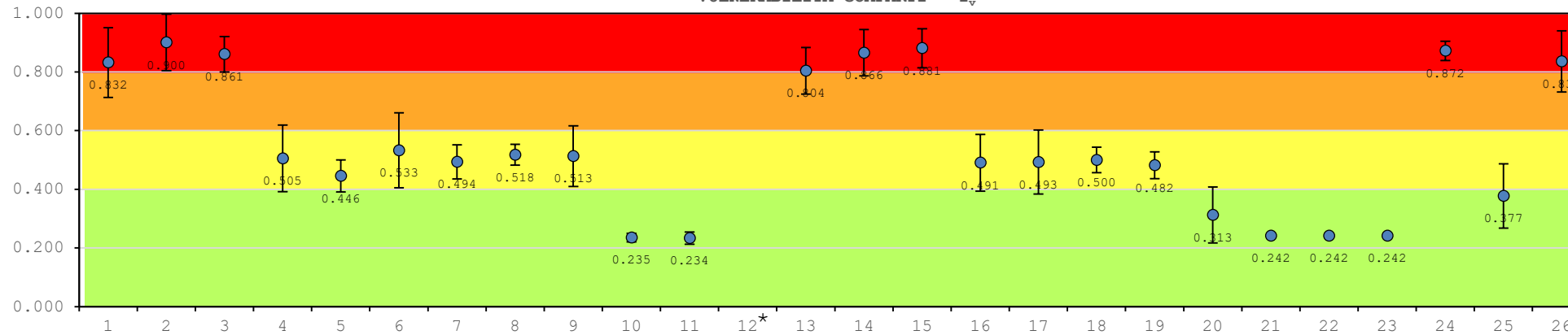
INCIDENZA NUMERICA COMPARTI A LIVELLO COMUNALE



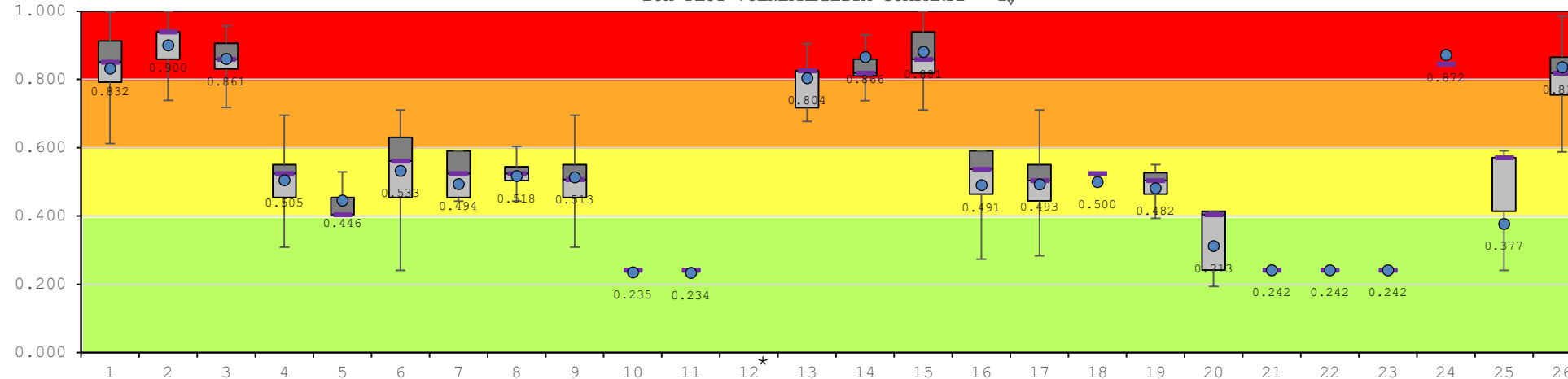
INCIDENZA VOLUMETRICA COMPARTI A LIVELLO COMUNALE



VULNERABILITÀ COMPARTI - I<sub>v</sub>



BOX PLOT VULNERABILITÀ COMPARTI - I<sub>v</sub>



\* Comparto costituito da edifici in legno realizzati post 2018: VULNERABILITÀ BASSA



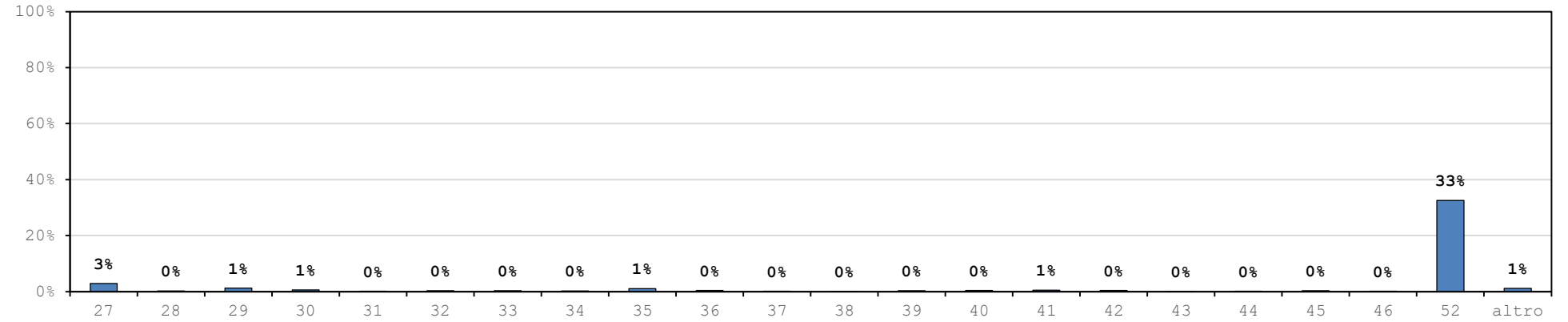


Comparti a livello comunale

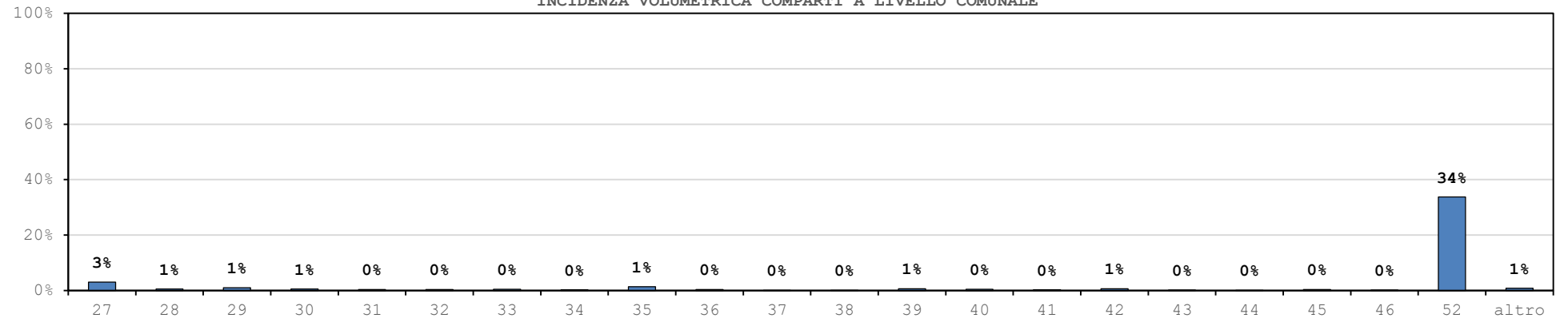
Comparto	Num. Ed.	Vol. [m <sup>3</sup> ]	I <sub>v,medio</sub>	stdev	COV
27	103	92 286	0.514	0.118	0.217
28	10	17 712	0.242	0.000	0.000
29	44	31 771	0.824	0.099	0.120
30	24	17 374	0.424	0.032	0.078
31	7	10 022	0.256	0.143	0.441
32	13	10 998	0.758	0.110	0.150
33	14	14 577	0.513	0.052	0.104
34	8	8 516	0.412	0.174	0.388
35	38	43 639	0.863	0.073	0.088
36	15	10 941	0.854	0.056	0.066
37	5	3 931	0.517	0.102	0.190
38	3	3 988	0.242	0.000	0.000
39	14	20 830	0.911	0.066	0.075
40	16	15 041	0.889	0.074	0.086
41	18	8 344	0.866	0.059	0.069
42	16	18 989	0.360	0.063	0.172
43	2	6 374	0.828	0.037	0.044
44	5	2 122			
45	12	11 750	0.871	0.042	0.049
46	6	6 245	0.930	0.033	0.035
52	1 165	1 038 684	0.772	0.176	0.243
altro	41	25 383			
tot	3 582	3 074 256	0.668	0.203	0.306

\* Comparto costituito da edifici in legno realizzati post 2018: VULNERABILITÀ BASSA

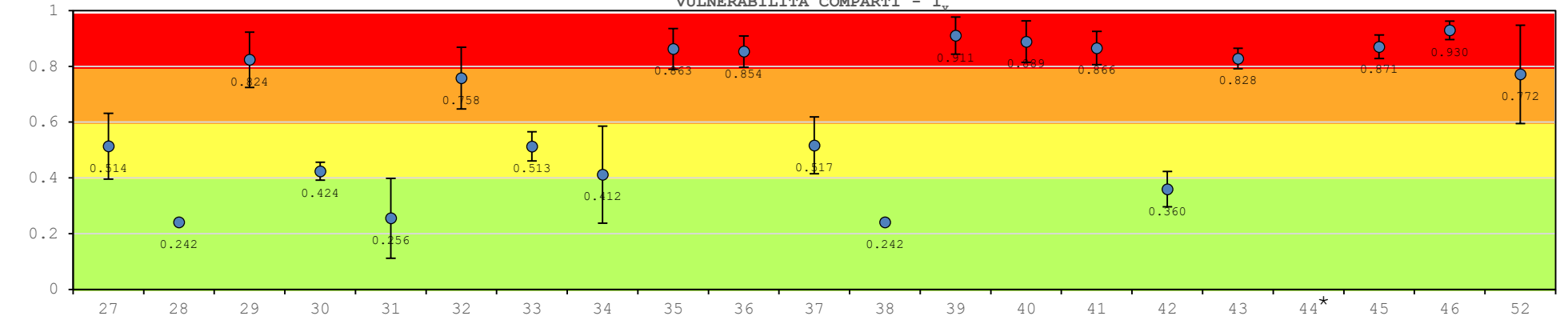
INCIDENZA NUMERICA COMPARTI A LIVELLO COMUNALE



INCIDENZA VOLUMETRICA COMPARTI A LIVELLO COMUNALE



VULNERABILITÀ COMPARTI - I<sub>v</sub>



BOX PLOT VULNERABILITÀ COMPARTI - I<sub>v</sub>

