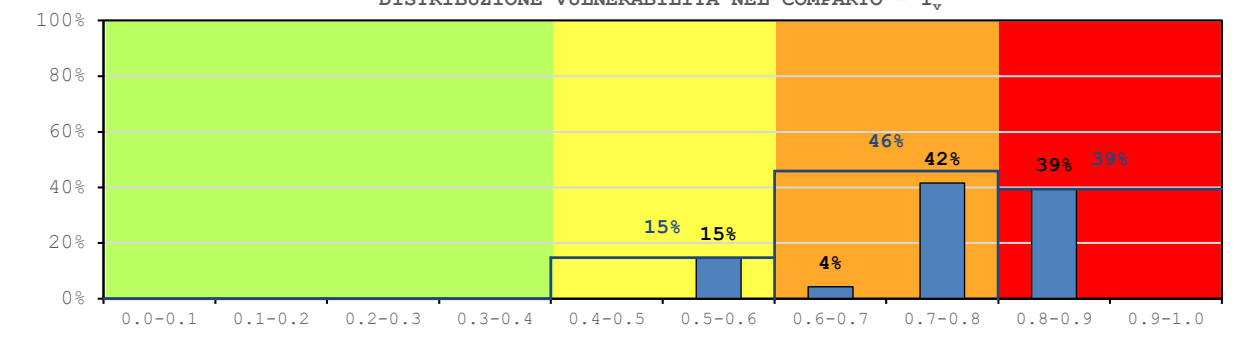
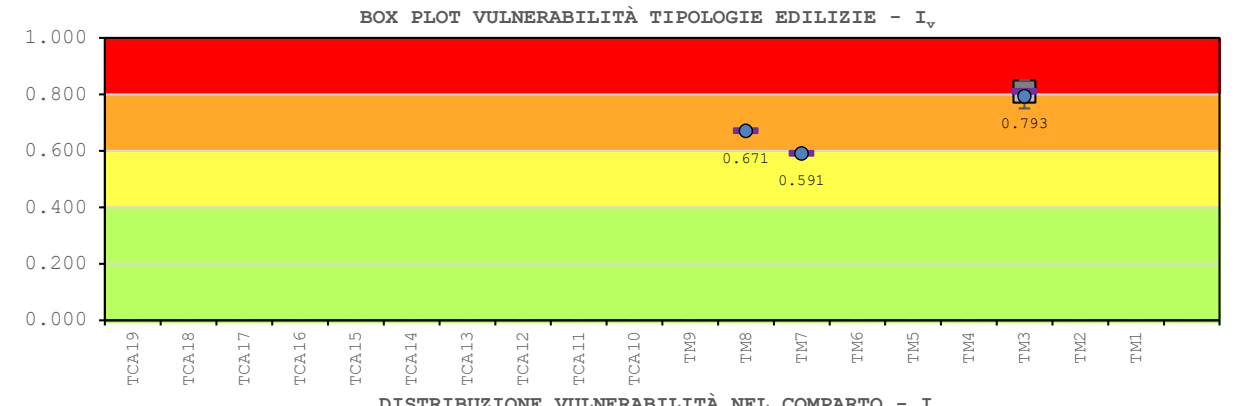
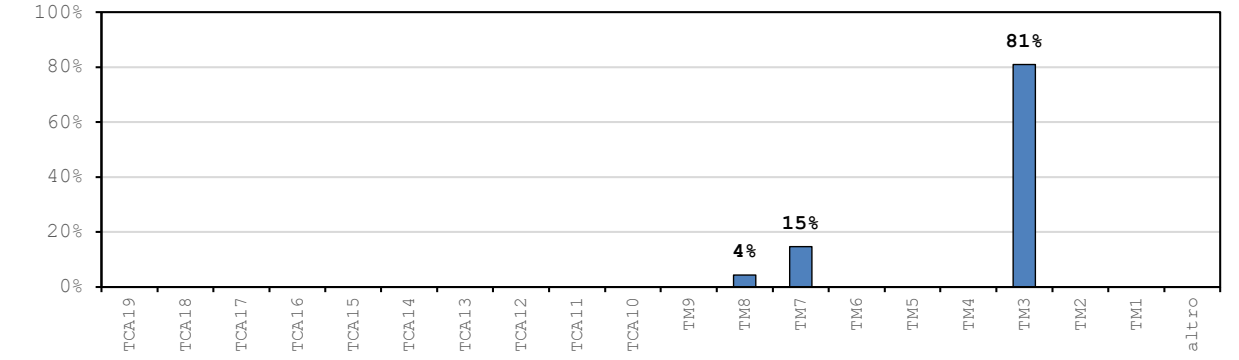
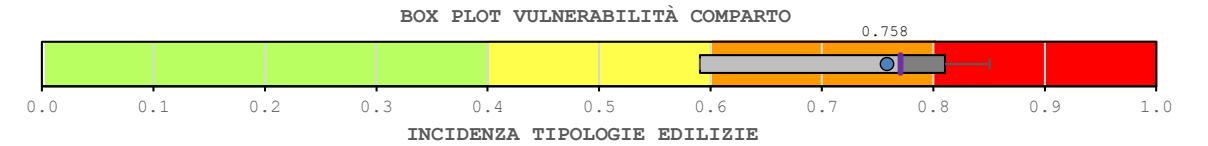
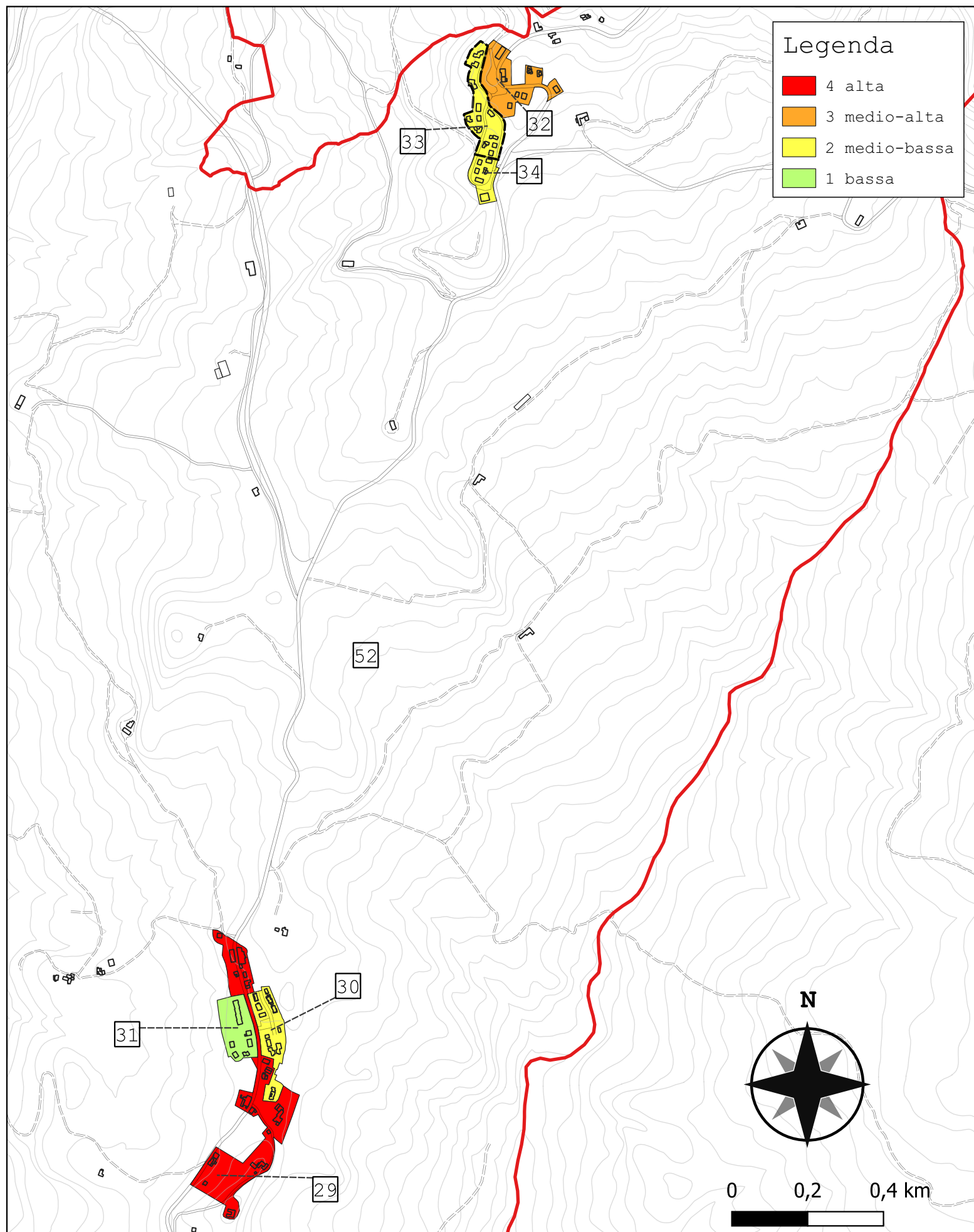


Legenda

- 4 alta
- 3 medio-alta
- 2 medio-bassa
- 1 bassa

Comparto 32		Santa Lucia 1			
Incidenza vol. comparto a livello comunale 0.4%					
Tipologie	Num. Ed.	Vol. [m ³]	I _{v,medio}	stdev	COV
TM1	-	-	-	-	-
TM2	-	-	-	-	-
TM3	8	8 909	0.793	0.038	0.046
TM4	-	-	-	-	-
TM5	-	-	-	-	-
TM6	-	-	-	-	-
TM7	4	1 617	0.591	0.000	0.000
TM8	1	471	0.671	-	-
TM9	-	-	-	-	-
TCA10	-	-	-	-	-
TCA11	-	-	-	-	-
TCA12	-	-	-	-	-
TCA13	-	-	-	-	-
TCA14	-	-	-	-	-
TCA15	-	-	-	-	-
TCA16	-	-	-	-	-
TCA17	-	-	-	-	-
TCA18	-	-	-	-	-
TCA19	-	-	-	-	-
altro	0	0	-	-	-
tot.	13	10 998	0.758	0.110	0.146

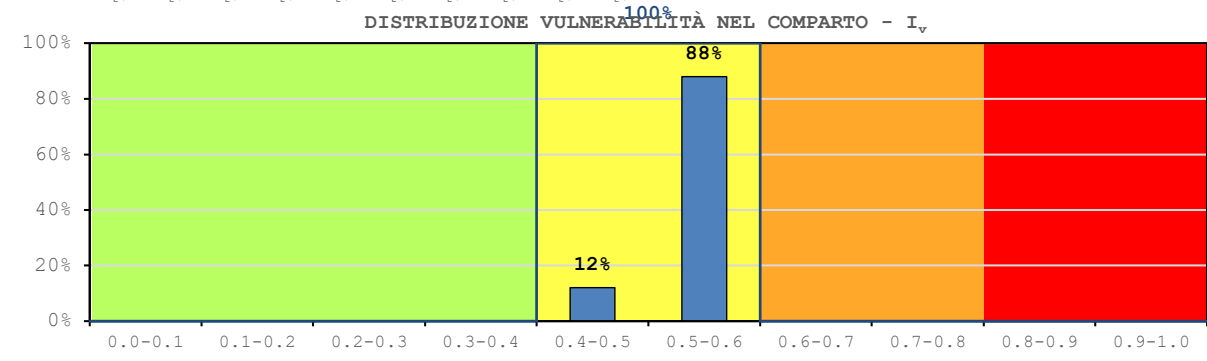
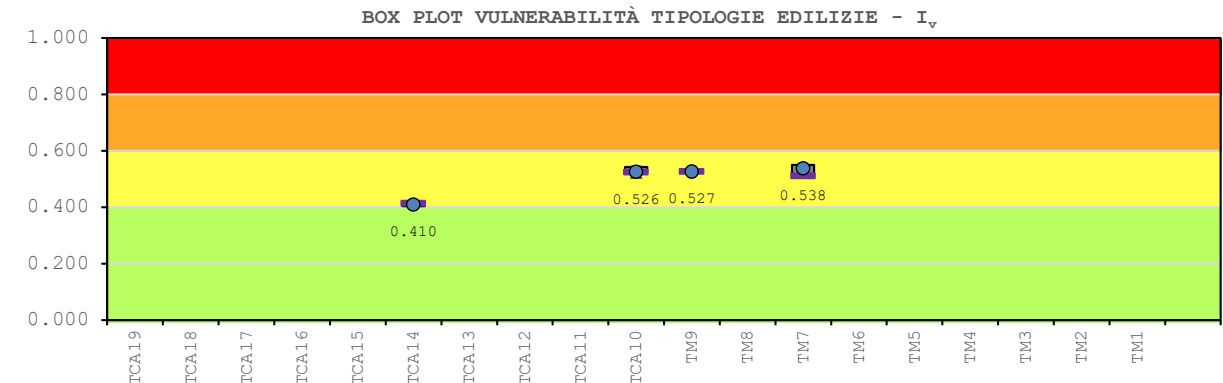
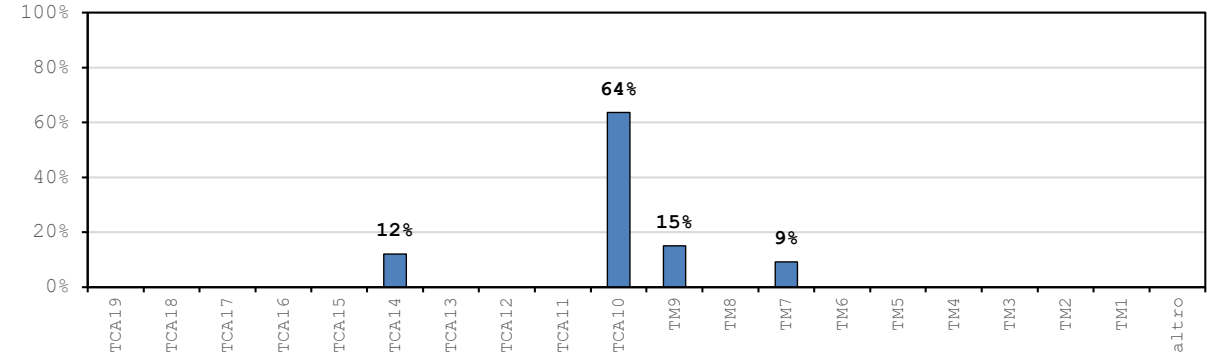
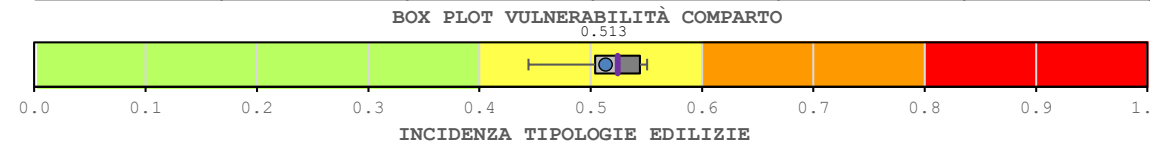


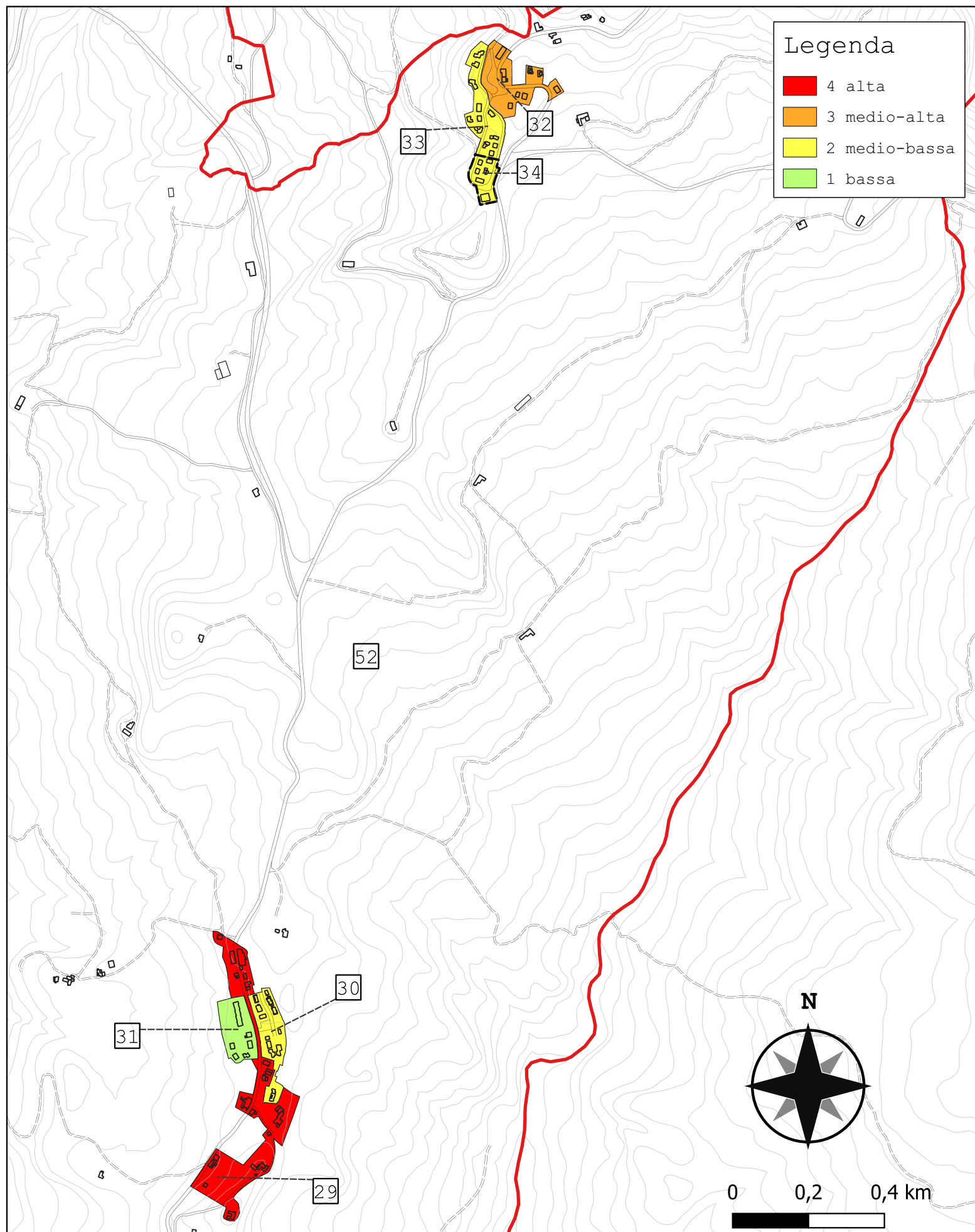


Legenda

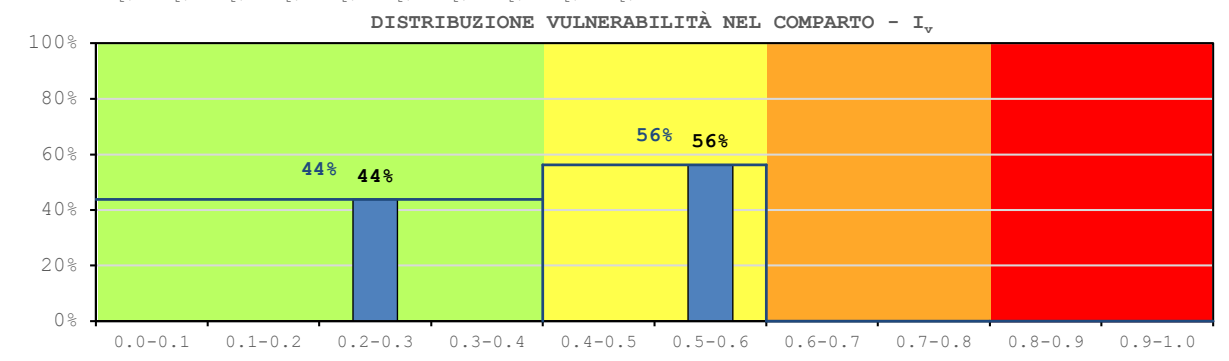
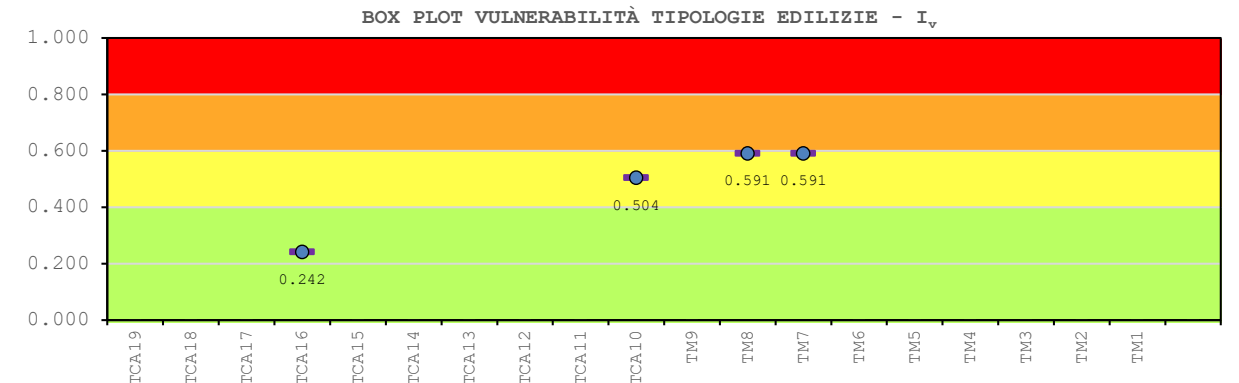
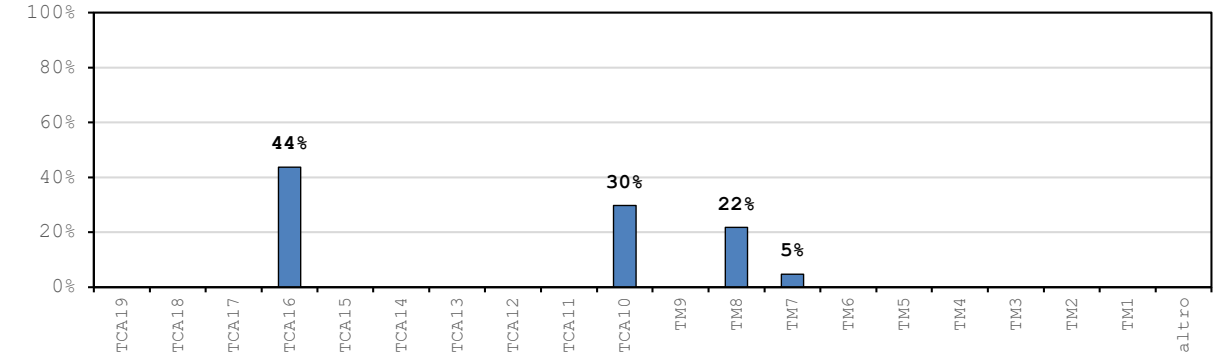
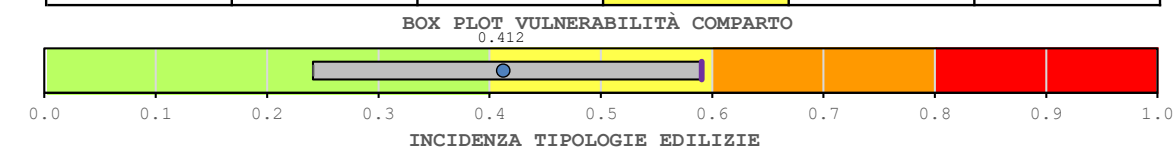
- 4 alta
- 3 medio-alta
- 2 medio-bassa
- 1 bassa

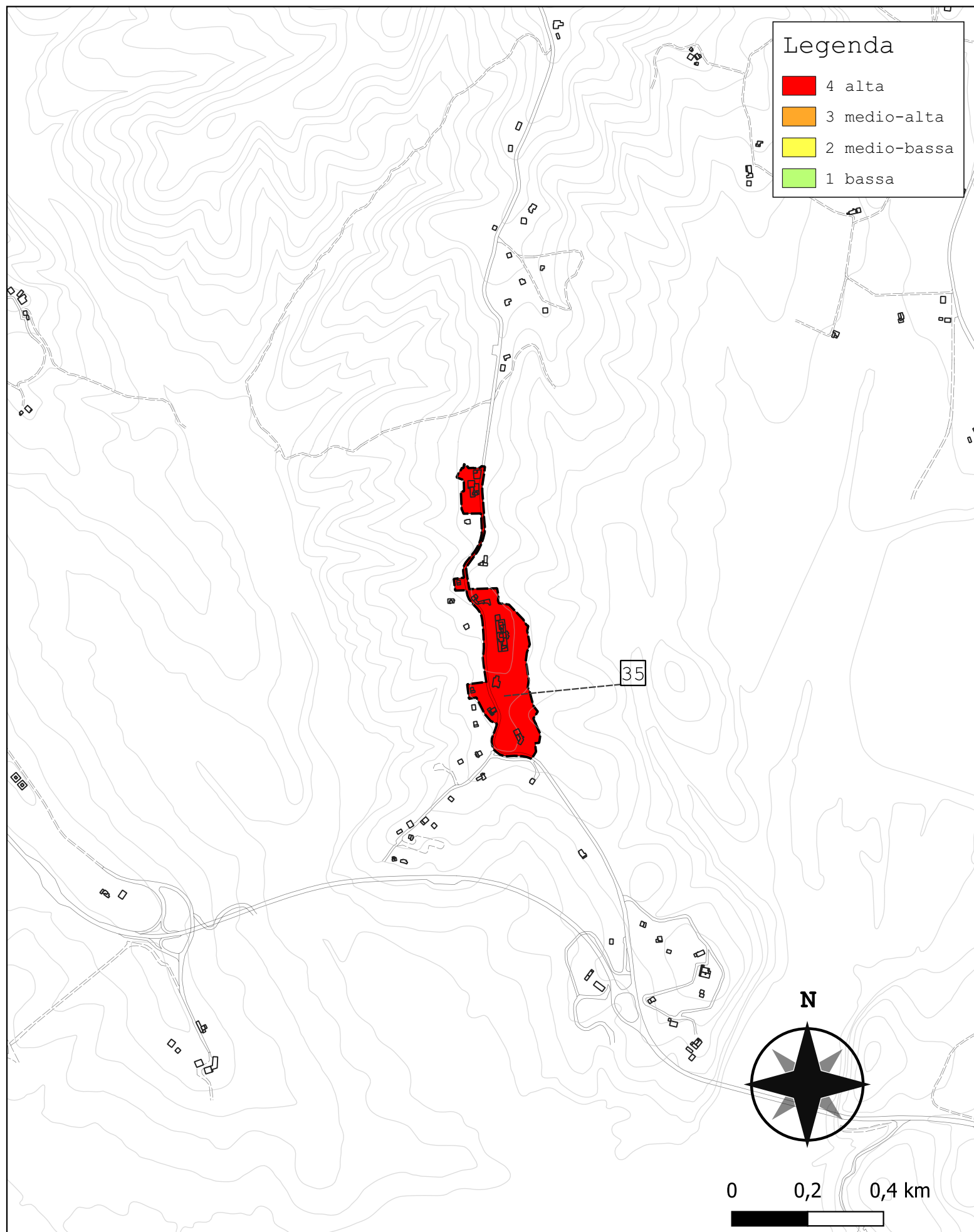
Comparto 33		Santa Lucia 2A			
Incidenza vol. comparto a livello comunale 0.5%					
Tipologie	Num. Ed.	Vol. [m ³]	I _{v,medio}	stdev	COV
TM1	-	-	-	-	-
TM2	-	-	-	-	-
TM3	-	-	-	-	-
TM4	-	-	-	-	-
TM5	-	-	-	-	-
TM6	-	-	-	-	-
TM7	2	1 345	0.538	0.028	0.053
TM8	-	-	-	-	-
TM9	2	2 191	0.527	0.000	0.000
TCA10	7	9 286	0.526	0.015	0.029
TCA11	-	-	-	-	-
TCA12	-	-	-	-	-
TCA13	-	-	-	-	-
TCA14	3	1 755	0.410	0.006	0.014
TCA15	-	-	-	-	-
TCA16	-	-	-	-	-
TCA17	-	-	-	-	-
TCA18	-	-	-	-	-
TCA19	-	-	-	-	-
altro	0	0	-	-	-
tot.	14	14 577	0.513	0.052	0.102



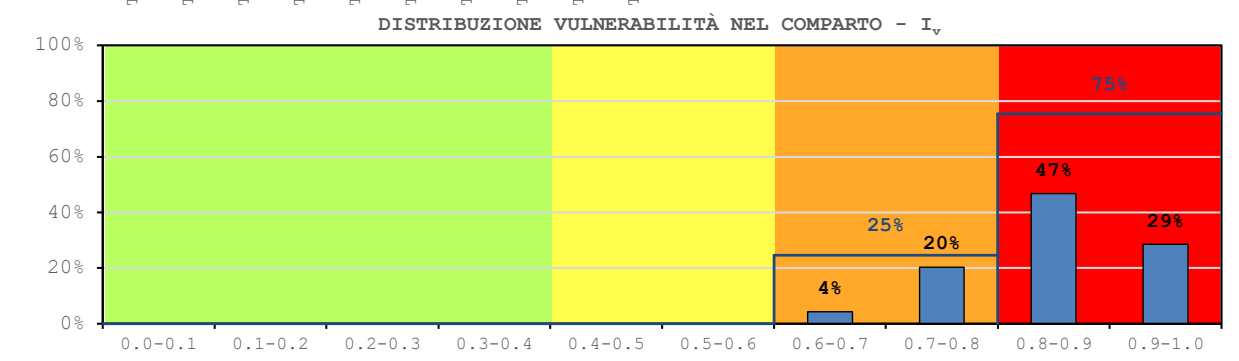
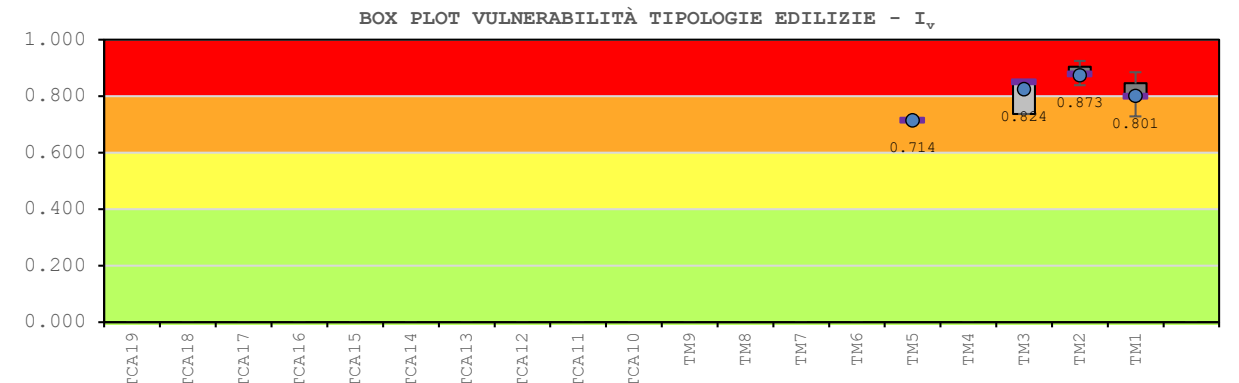
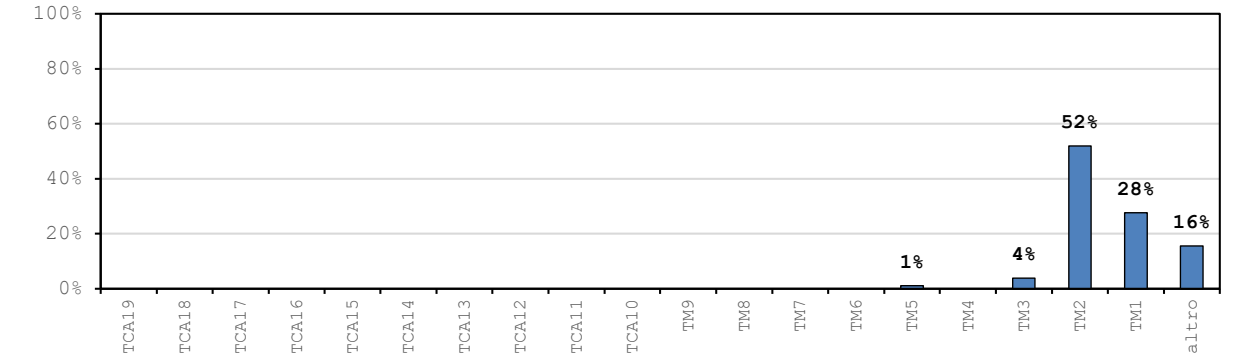
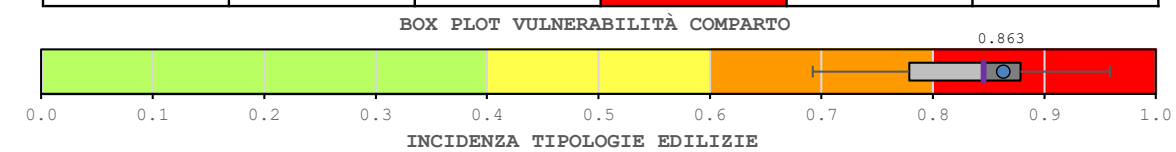


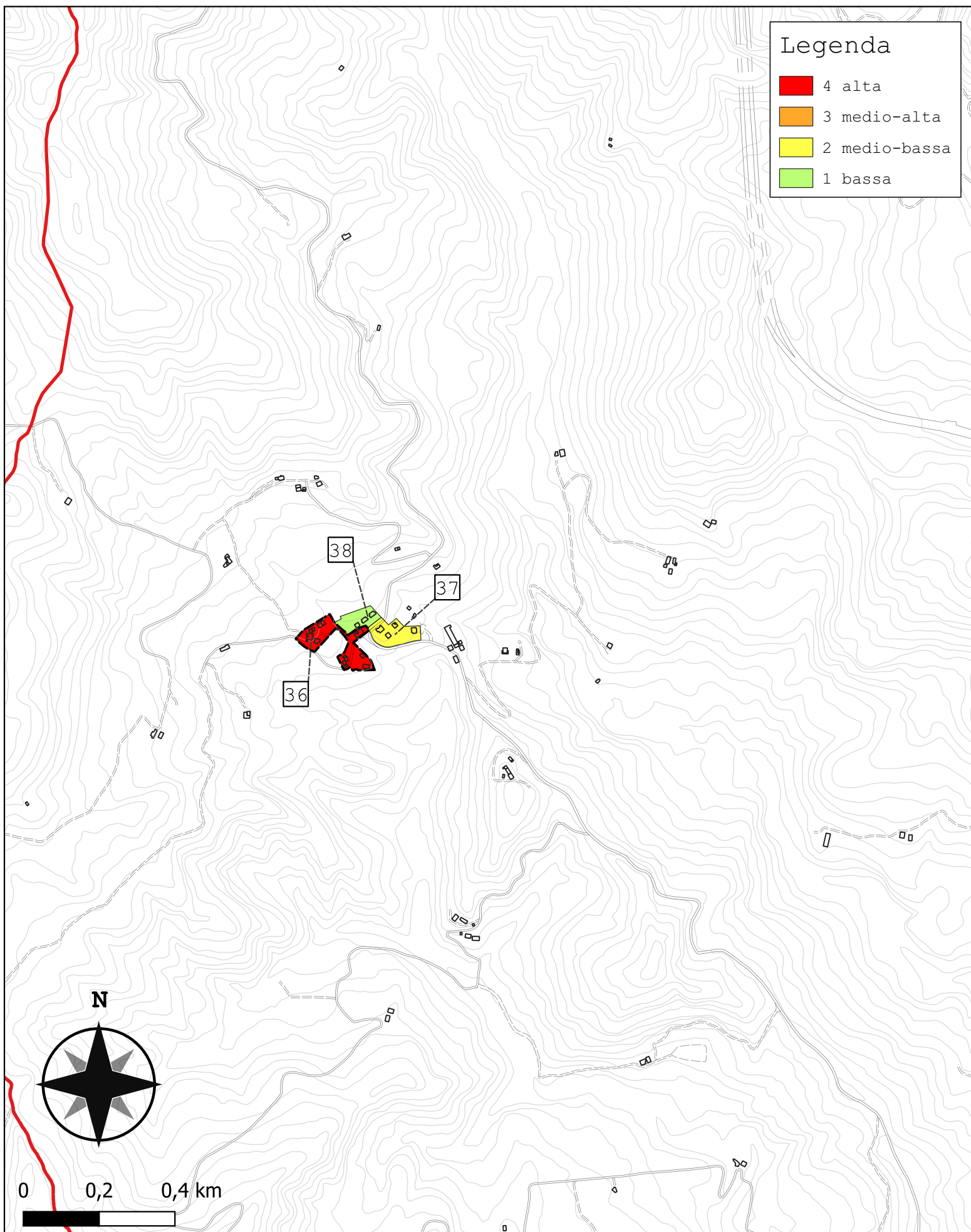
Comparto 34		Santa Lucia 2B			
Incidenza vol. comparto a livello comunale 0.3%					
Tipologie	Num. Ed.	Vol. [m ³]	I _{v,medio}	stdev	COV
TM1	-	-	-	-	-
TM2	-	-	-	-	-
TM3	-	-	-	-	-
TM4	-	-	-	-	-
TM5	-	-	-	-	-
TM6	-	-	-	-	-
TM7	3	401	0.591	0.000	0.000
TM8	1	1 860	0.591	-	-
TM9	-	-	-	-	-
TCA10	1	2 529	0.504	-	-
TCA11	-	-	-	-	-
TCA12	-	-	-	-	-
TCA13	-	-	-	-	-
TCA14	-	-	-	-	-
TCA15	-	-	-	-	-
TCA16	3	3 726	0.242	0.000	0.000
TCA17	-	-	-	-	-
TCA18	-	-	-	-	-
TCA19	-	-	-	-	-
altro	0	0	-	-	-
tot.	8	8 516	0.412	0.174	0.423





Comparto 35		Le Maschere			
Incidenza vol. comparto a livello comunale 1.4%					
Tipologie	Num. Ed.	Vol. [m ³]	I _{v,medio}	stdev	COV
TM1	14	12 057	0.801	0.055	0.069
TM2	12	22 671	0.873	0.039	0.044
TM3	6	1 681	0.824	0.058	0.072
TM4	-	-	-	-	-
TM5	4	454	0.714	0.000	0.000
TM6	-	-	-	-	-
TM7	-	-	-	-	-
TM8	-	-	-	-	-
TM9	-	-	-	-	-
TCA10	-	-	-	-	-
TCA11	-	-	-	-	-
TCA12	-	-	-	-	-
TCA13	-	-	-	-	-
TCA14	-	-	-	-	-
TCA15	-	-	-	-	-
TCA16	-	-	-	-	-
TCA17	-	-	-	-	-
TCA18	-	-	-	-	-
TCA19	-	-	-	-	-
altro	2	6 775	-	-	-
tot.	38	43 639	0.863	0.073	0.085

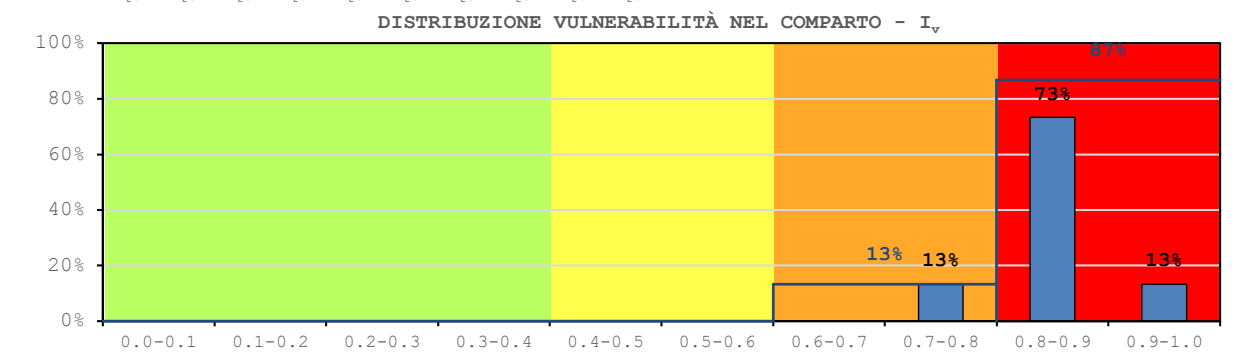
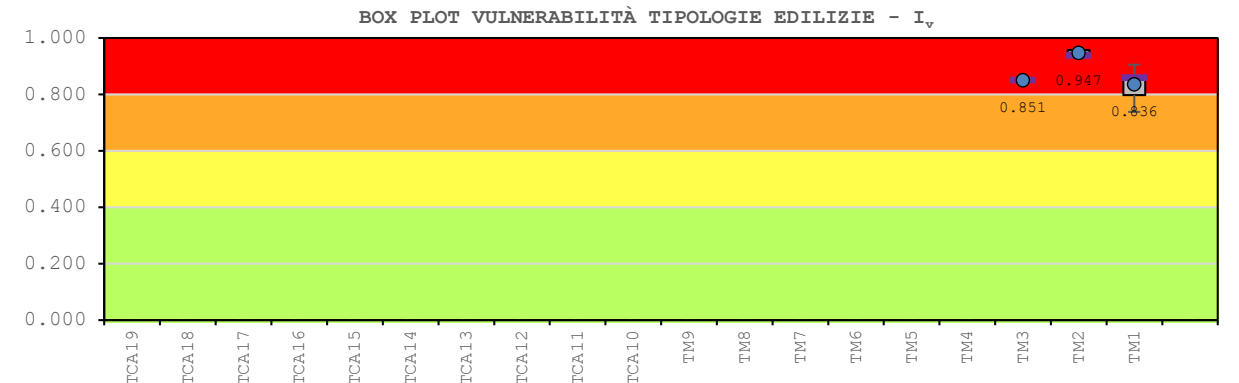
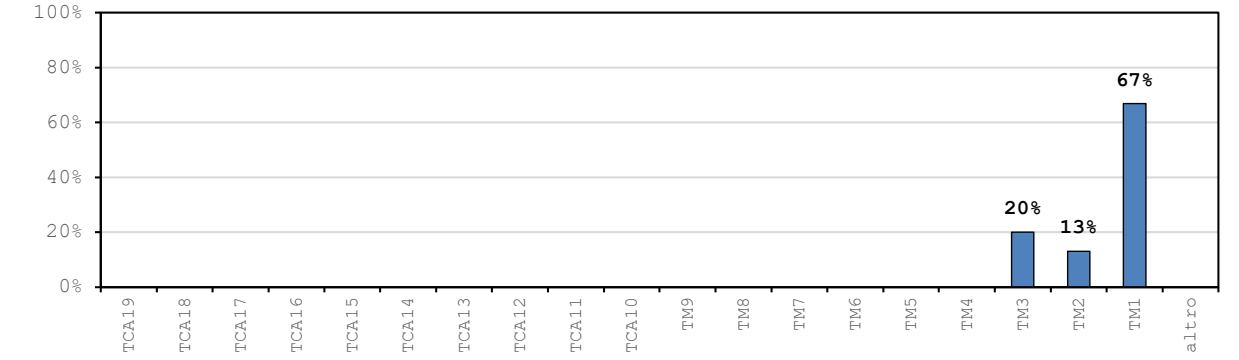
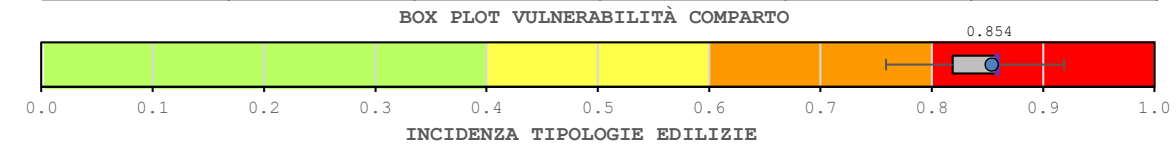


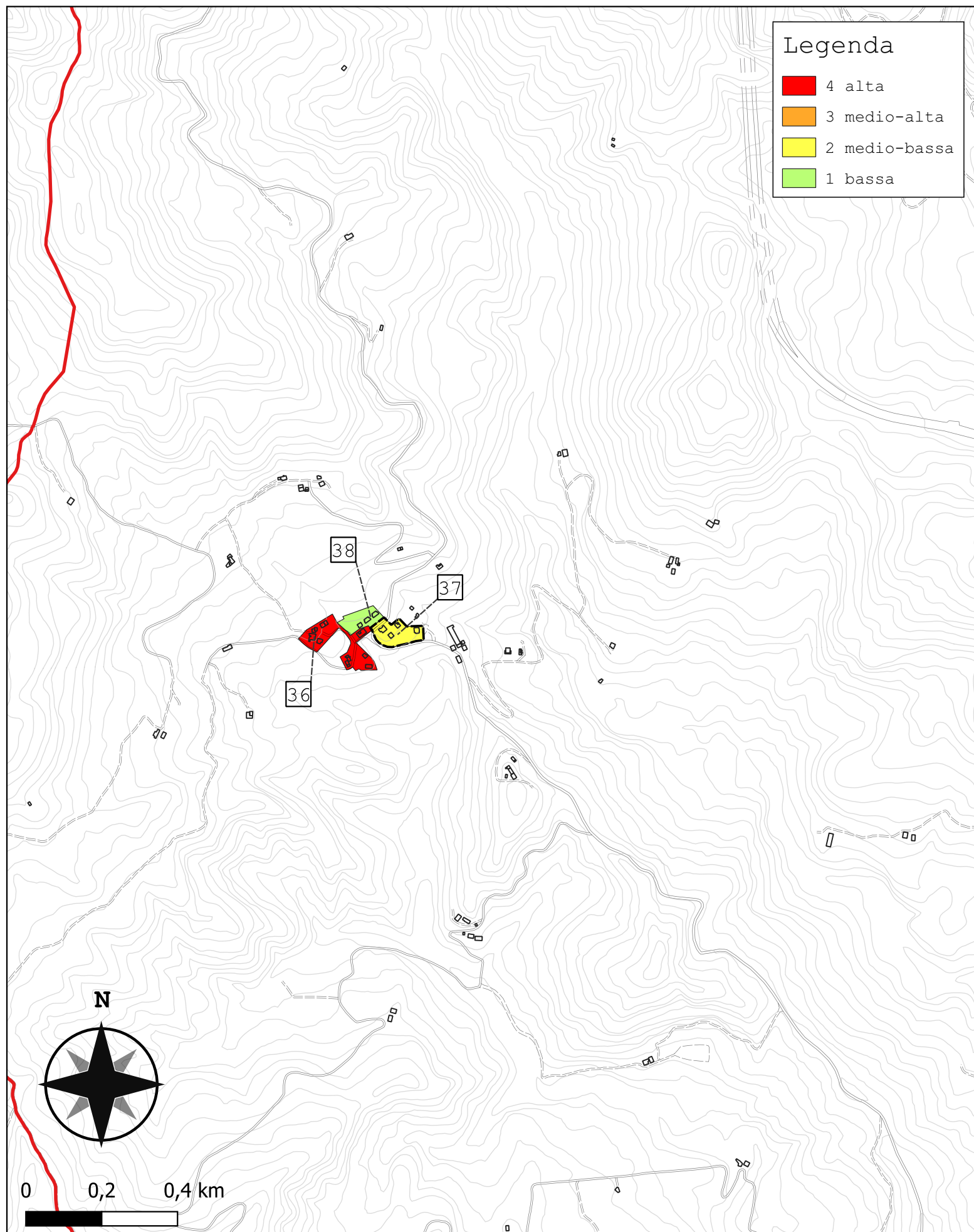


Legenda

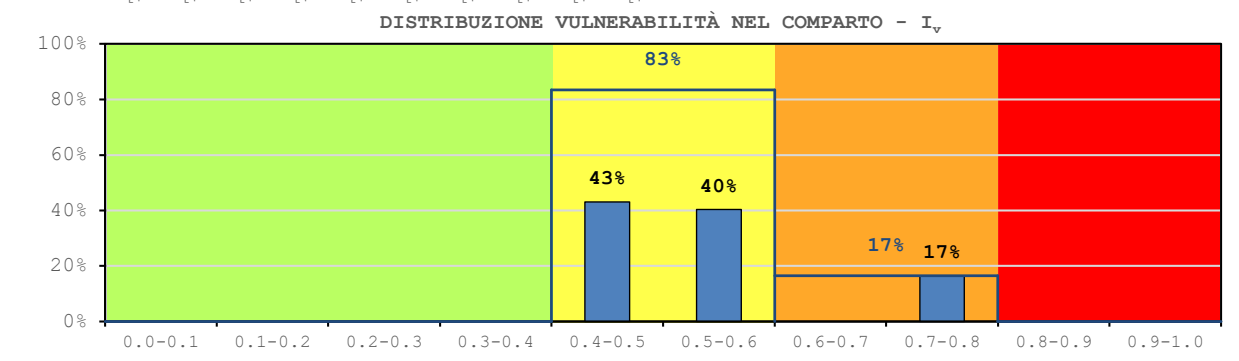
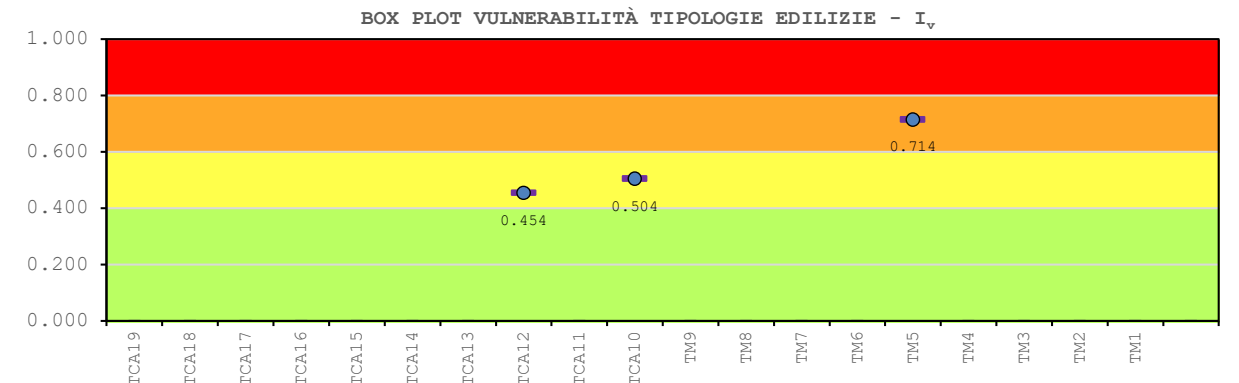
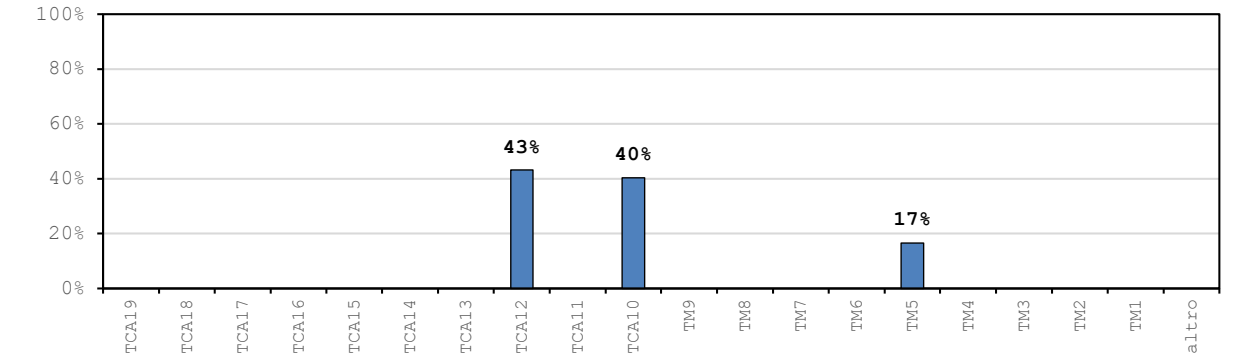
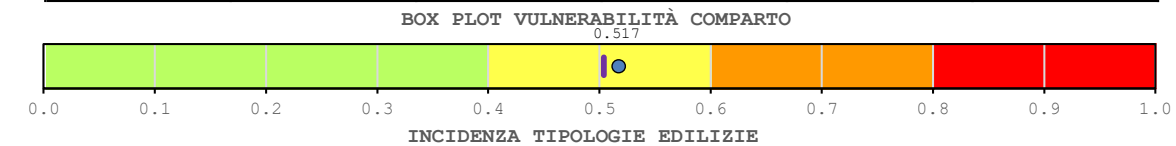
- 4 alta
- 3 medio-alta
- 2 medio-bassa
- 1 bassa

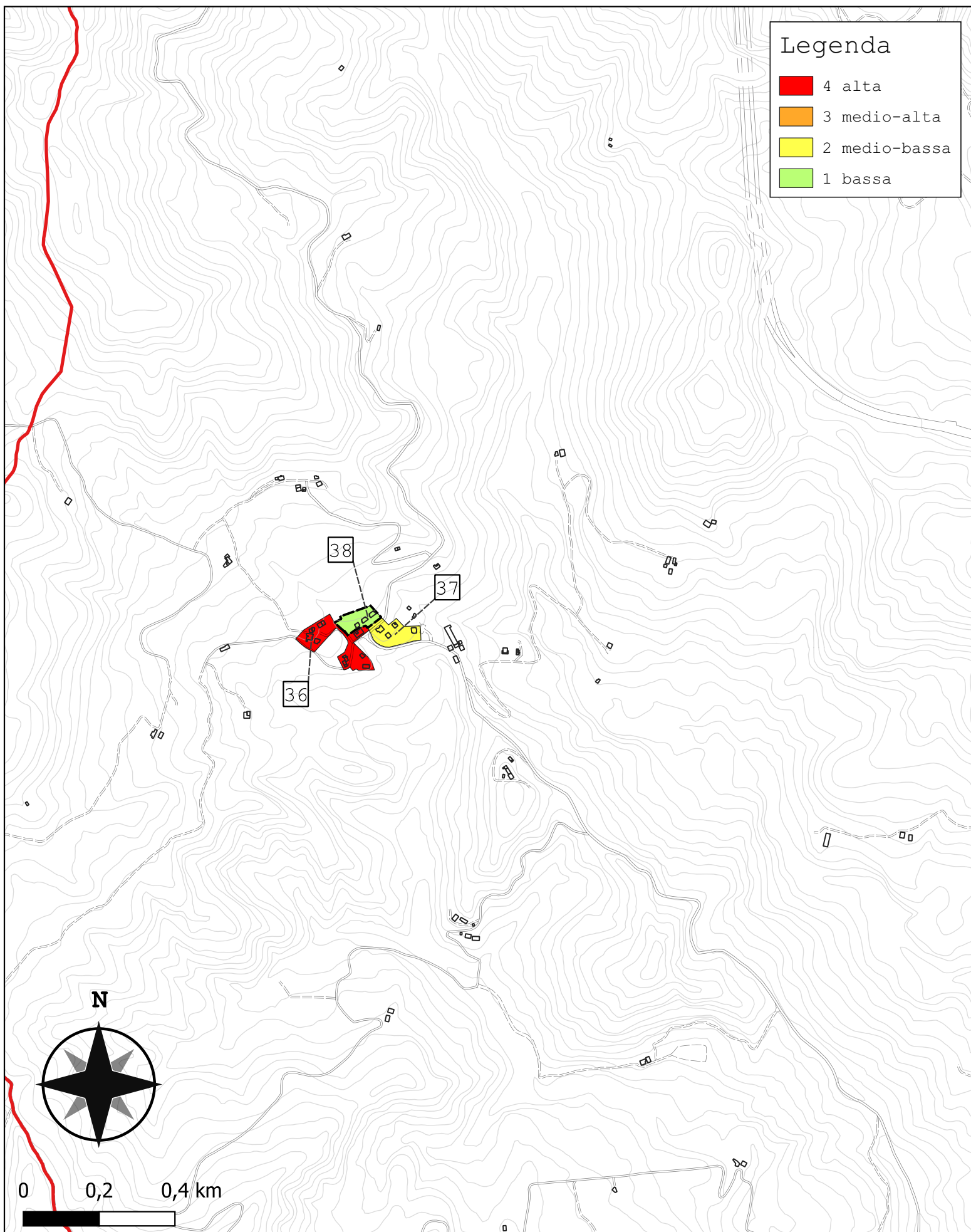
Comparto 36		Mangona 1			
Incidenza vol. comparto a livello comunale 0.4%					
Tipologie	Num. Ed.	Vol. [m ³]	I _{v,medio}	stdev	COV
TM1	11	7 313	0.836	0.047	0.057
TM2	2	1 440	0.947	0.014	0.015
TM3	2	2 188	0.851	0.000	0.000
TM4	-	-	-	-	-
TM5	-	-	-	-	-
TM6	-	-	-	-	-
TM7	-	-	-	-	-
TM8	-	-	-	-	-
TM9	-	-	-	-	-
TCA10	-	-	-	-	-
TCA11	-	-	-	-	-
TCA12	-	-	-	-	-
TCA13	-	-	-	-	-
TCA14	-	-	-	-	-
TCA15	-	-	-	-	-
TCA16	-	-	-	-	-
TCA17	-	-	-	-	-
TCA18	-	-	-	-	-
TCA19	-	-	-	-	-
altro	0	0	-	-	-
tot.	15	10 941	0.854	0.056	0.066



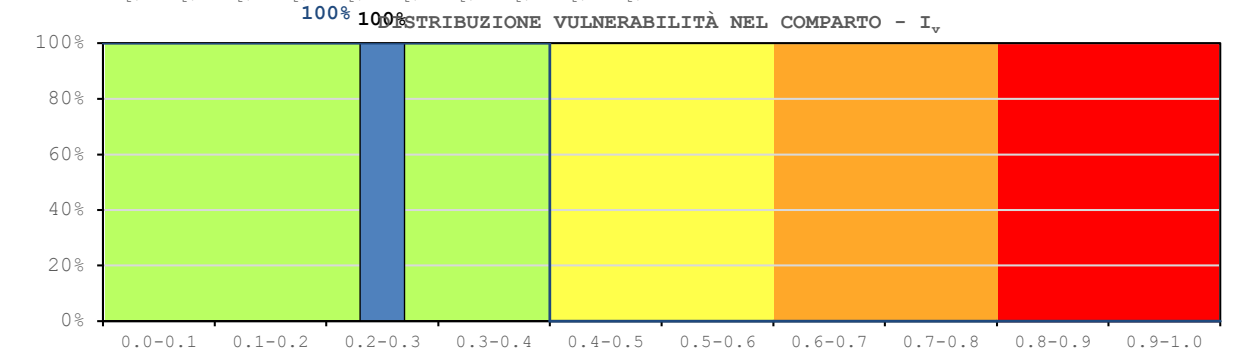
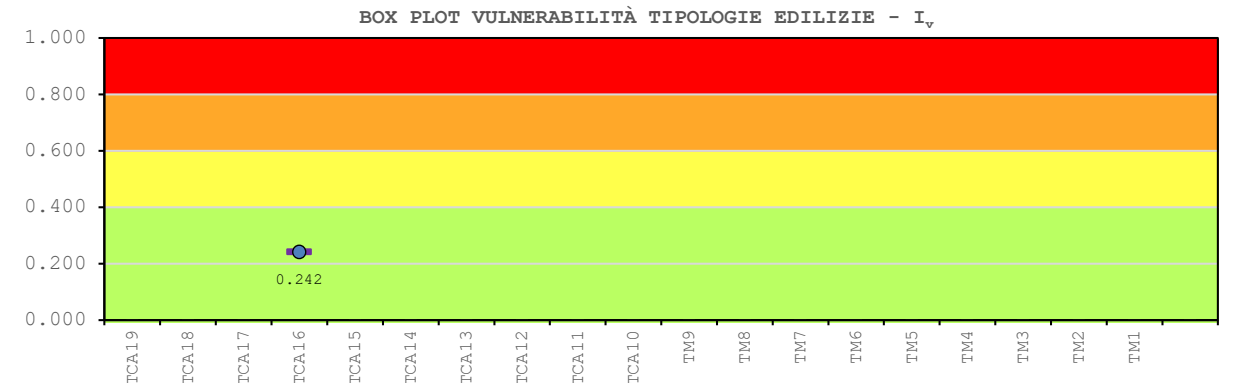
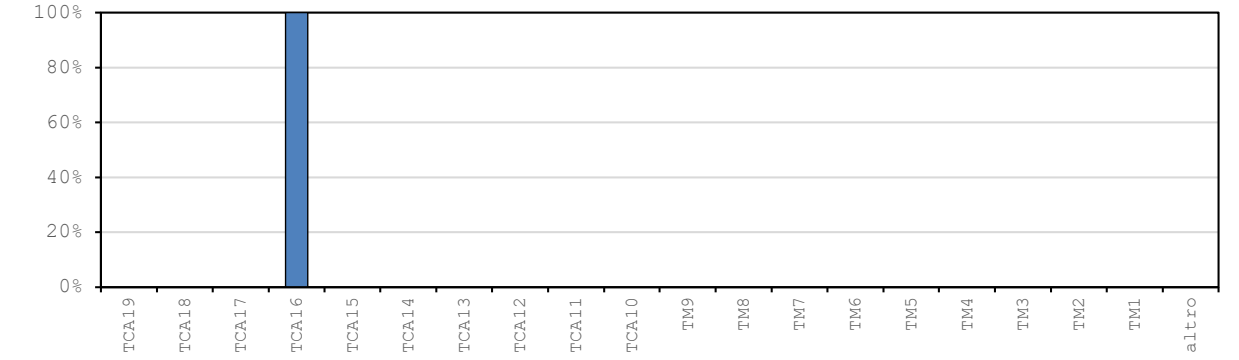
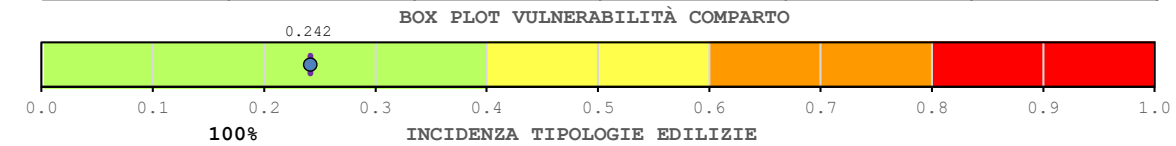


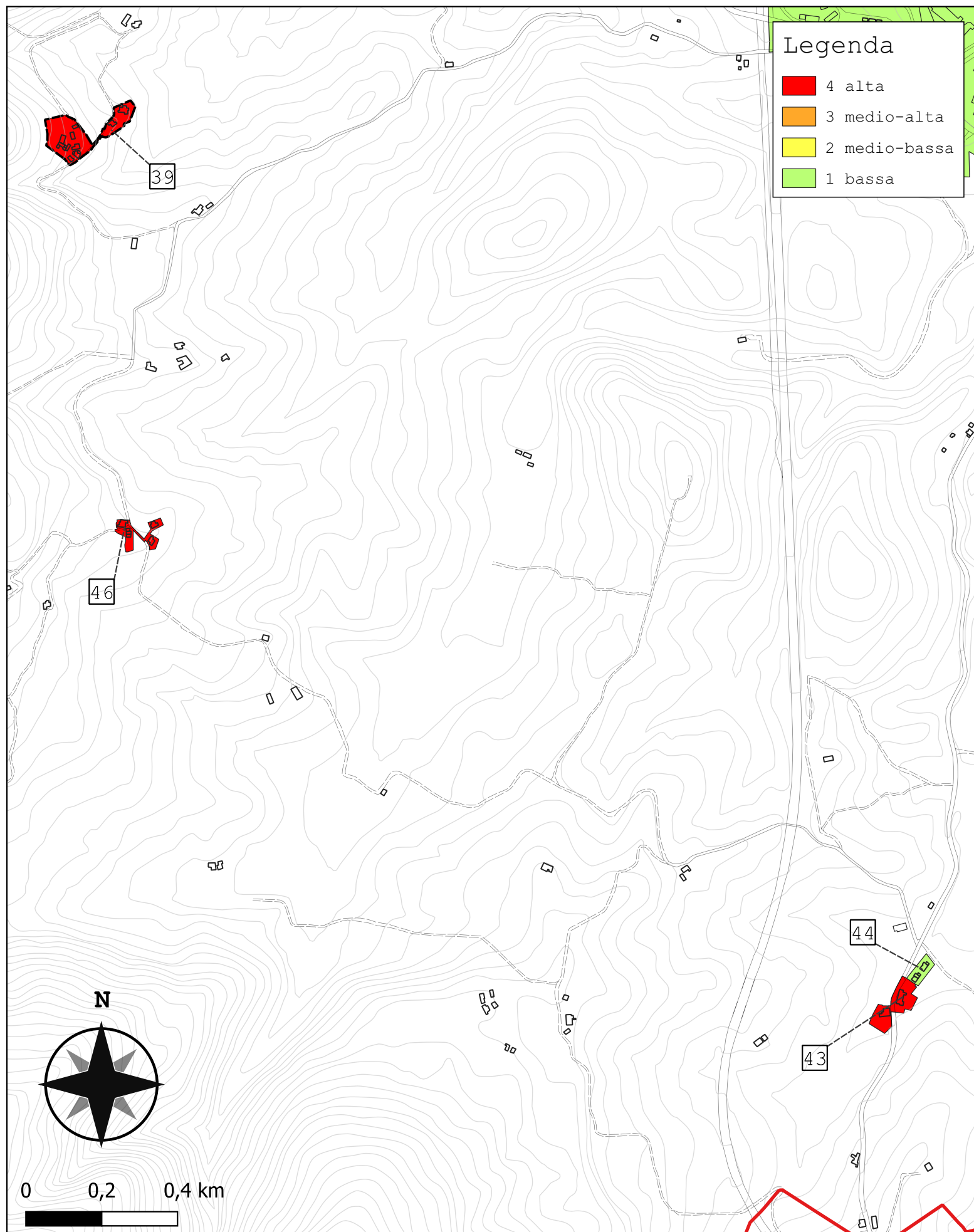
Comparto 37		Mangona 2			
Incidenza vol. comparto a livello comunale 0.1%					
Tipologie	Num. Ed.	Vol. [m ³]	I _{v,medio}	stdev	COV
TM1	-	-	-	-	-
TM2	-	-	-	-	-
TM3	-	-	-	-	-
TM4	-	-	-	-	-
TM5	1	650	0.714	-	-
TM6	-	-	-	-	-
TM7	-	-	-	-	-
TM8	-	-	-	-	-
TM9	-	-	-	-	-
TCA10	3	1 586	0.504	0.000	0.000
TCA11	-	-	-	-	-
TCA12	1	1 695	0.454	-	-
TCA13	-	-	-	-	-
TCA14	-	-	-	-	-
TCA15	-	-	-	-	-
TCA16	-	-	-	-	-
TCA17	-	-	-	-	-
TCA18	-	-	-	-	-
TCA19	-	-	-	-	-
altro	0	0	-	-	-
tot.	5	3 931	0.517	0.102	0.197



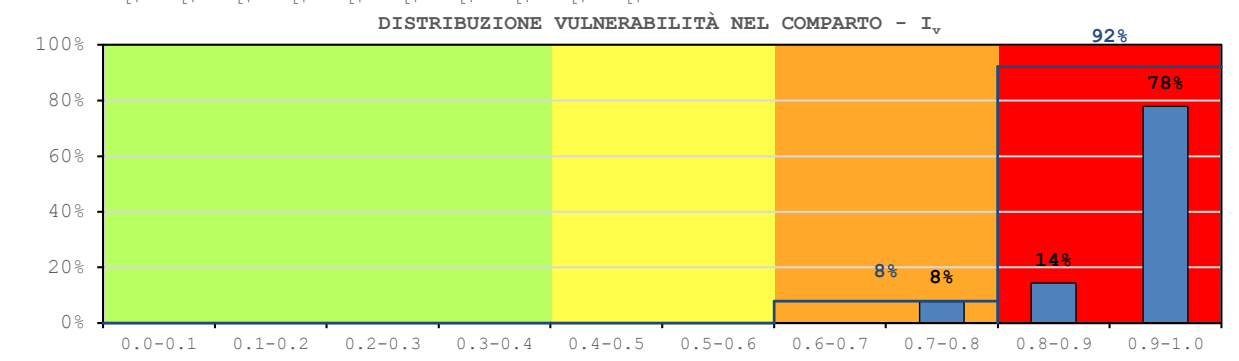
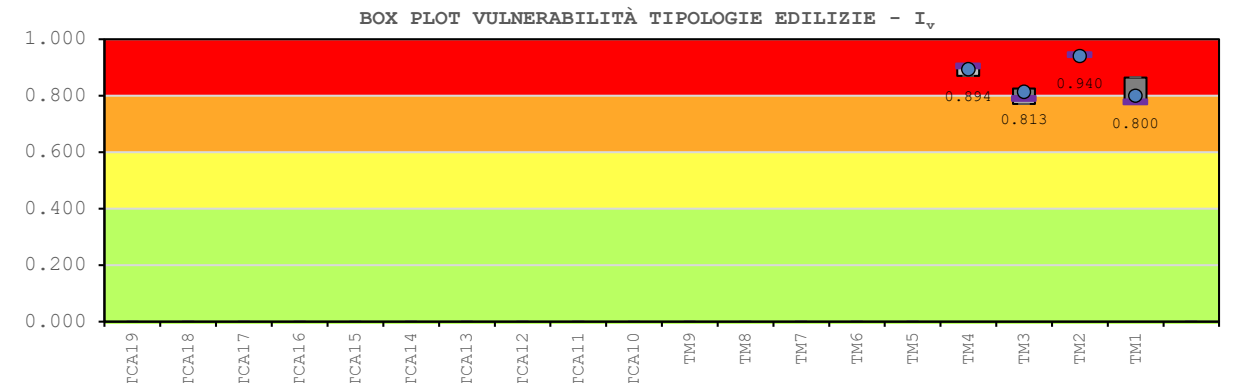
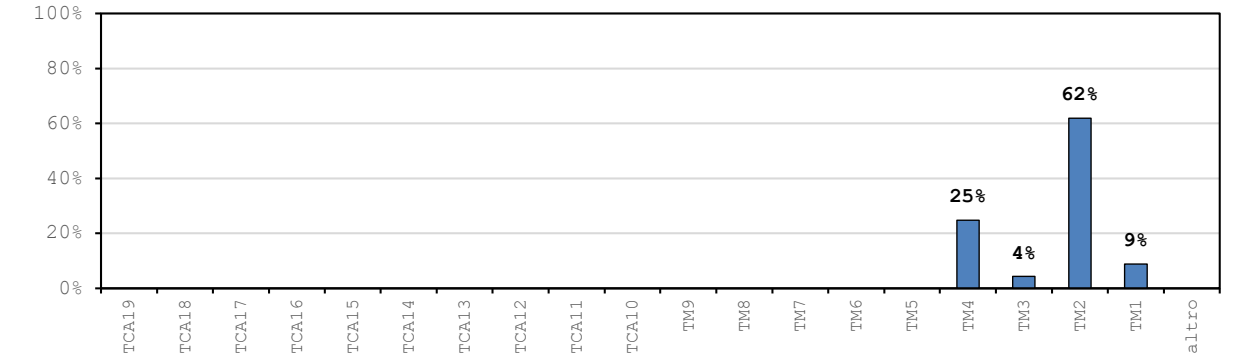
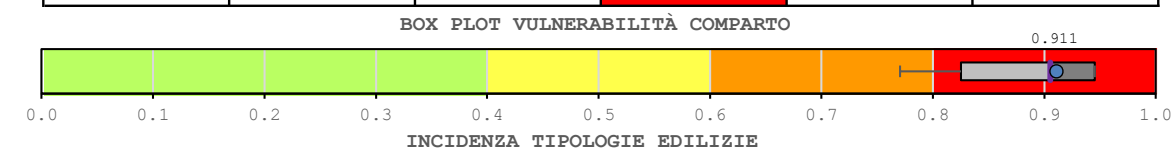


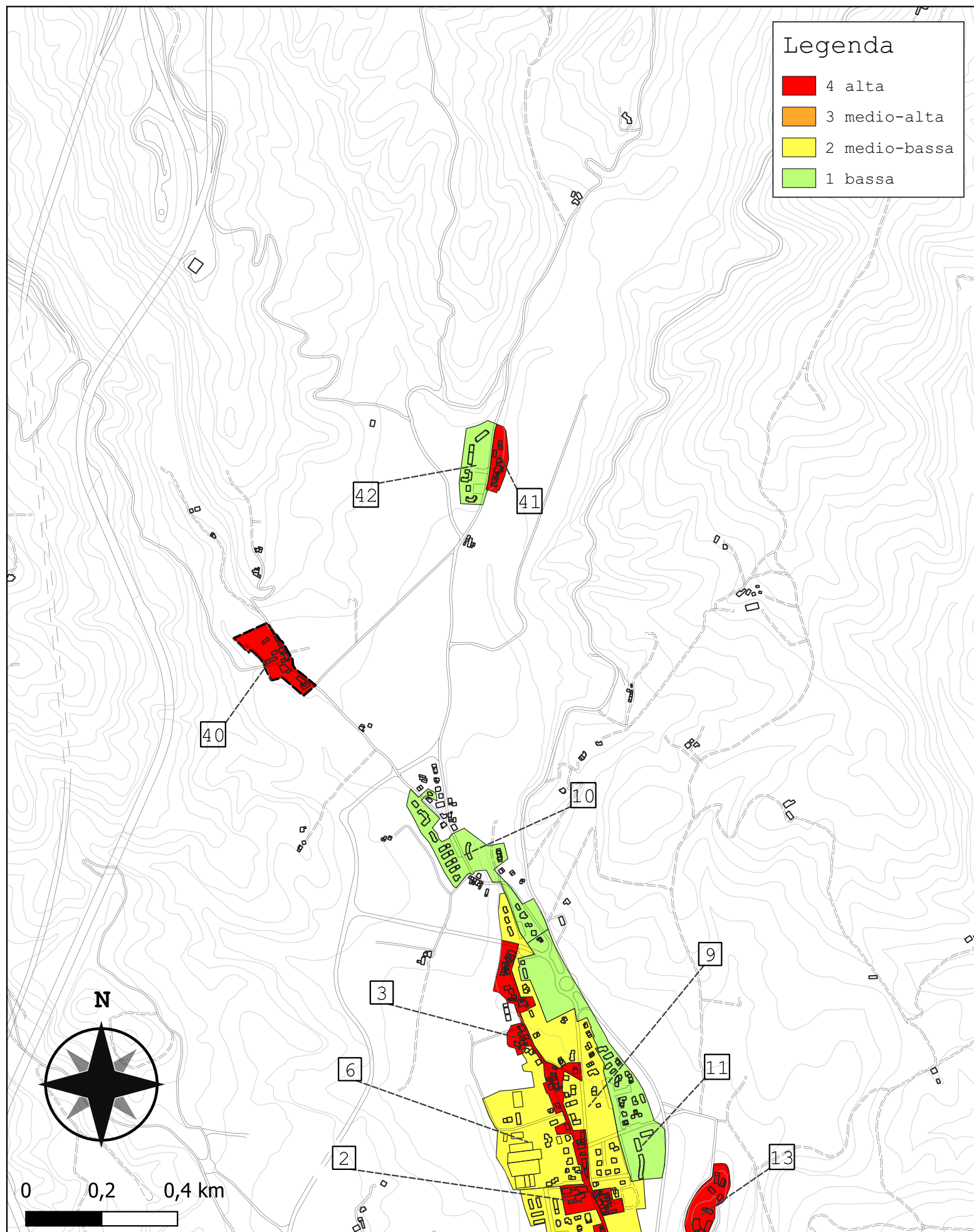
Comparto 38		Mangona 3			
Incidenza vol. comparto a livello comunale 0.1%					
Tipologie	Num. Ed.	Vol. [m ³]	I _{v,medio}	stdev	COV
TM1	-	-	-	-	-
TM2	-	-	-	-	-
TM3	-	-	-	-	-
TM4	-	-	-	-	-
TM5	-	-	-	-	-
TM6	-	-	-	-	-
TM7	-	-	-	-	-
TM8	-	-	-	-	-
TM9	-	-	-	-	-
TCA10	-	-	-	-	-
TCA11	-	-	-	-	-
TCA12	-	-	-	-	-
TCA13	-	-	-	-	-
TCA14	-	-	-	-	-
TCA15	-	-	-	-	-
TCA16	3	3 988	0.242	0.000	0.000
TCA17	-	-	-	-	-
TCA18	-	-	-	-	-
TCA19	-	-	-	-	-
altro	0	0	-	-	-
tot.	3	3 988	0.242	0.000	0.000





Comparto 39		Bovecchio			
Incidenza vol. comparto a livello comunale 0.7%					
Tipologie	Num. Ed.	Vol. [m ³]	I _{v,medio}	stdev	COV
TM1	2	1 858	0.800	0.062	0.076
TM2	6	12 906	0.940	0.016	0.017
TM3	3	898	0.813	0.028	0.035
TM4	3	5 168	0.894	0.022	0.024
TM5	-	-	-	-	-
TM6	-	-	-	-	-
TM7	-	-	-	-	-
TM8	-	-	-	-	-
TM9	-	-	-	-	-
TCA10	-	-	-	-	-
TCA11	-	-	-	-	-
TCA12	-	-	-	-	-
TCA13	-	-	-	-	-
TCA14	-	-	-	-	-
TCA15	-	-	-	-	-
TCA16	-	-	-	-	-
TCA17	-	-	-	-	-
TCA18	-	-	-	-	-
TCA19	-	-	-	-	-
altro	0	0	-	-	-
tot.	14	20 830	0.911	0.066	0.073

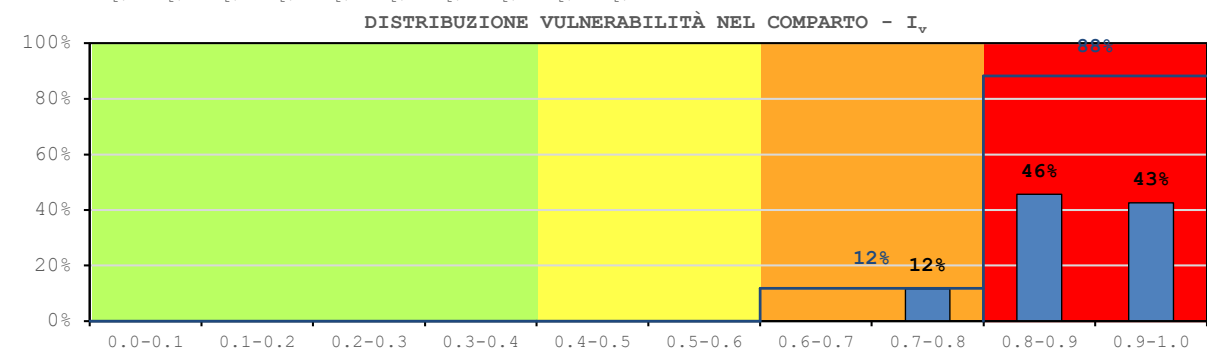
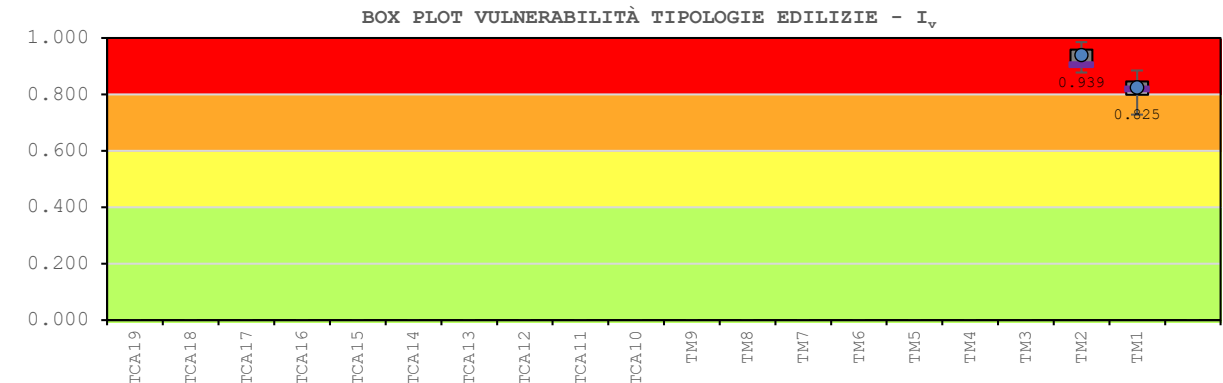
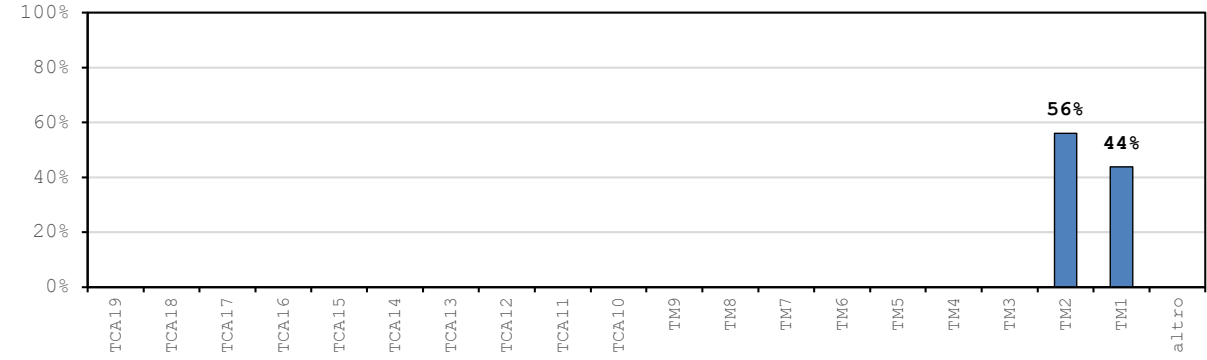
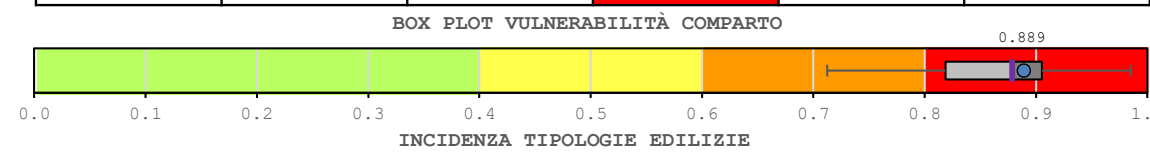


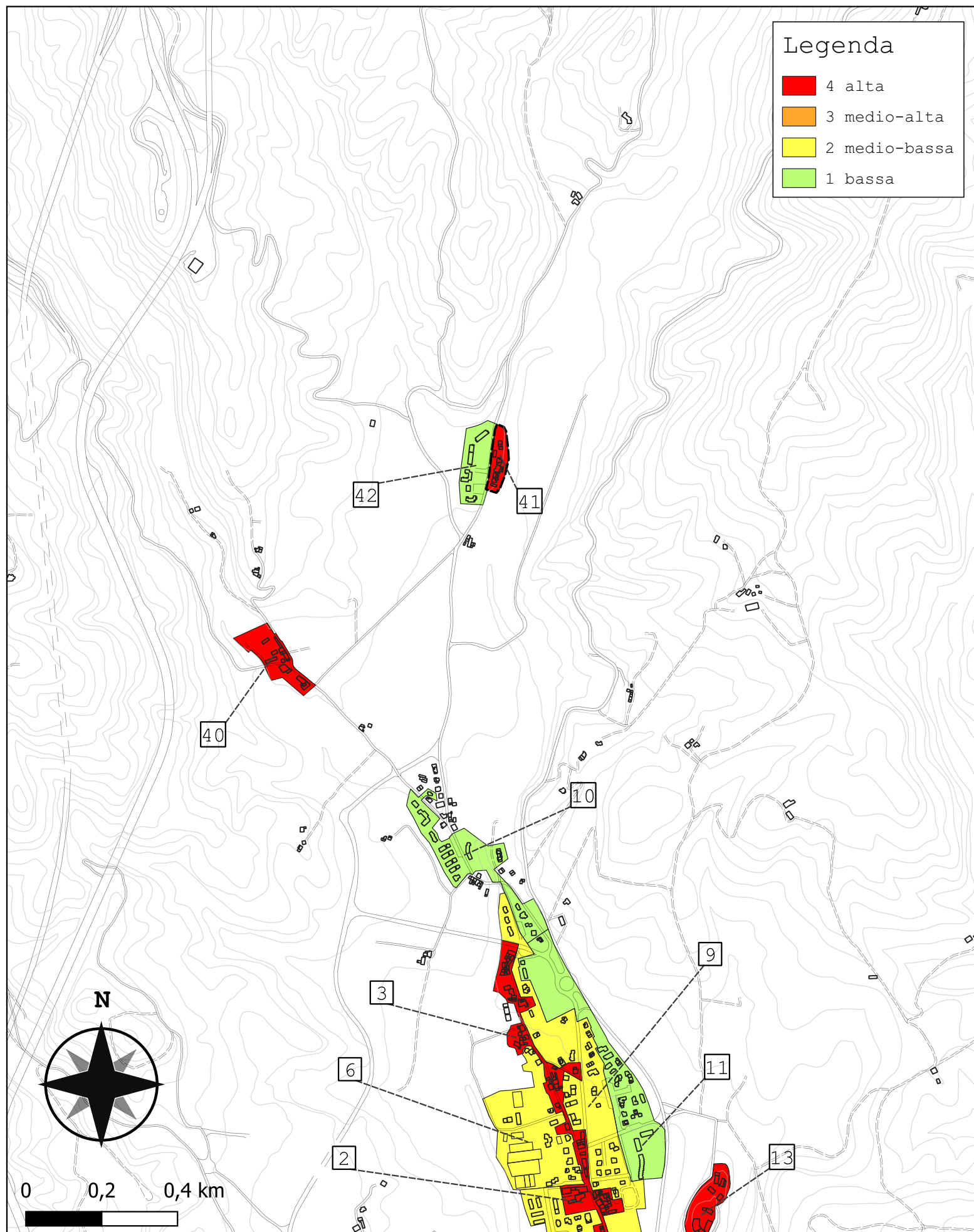


Legenda

- 4 alta
- 3 medio-alta
- 2 medio-bassa
- 1 bassa

Comparto 40		Cirignano			
Incidenza vol. comparto a livello comunale 0.5%					
Tipologie	Num. Ed.	Vol. [m ³]	I _{v,medio}	stdev	COV
TM1	9	6 595	0.825	0.057	0.069
TM2	7	8 445	0.939	0.041	0.044
TM3	-	-	-	-	-
TM4	-	-	-	-	-
TM5	-	-	-	-	-
TM6	-	-	-	-	-
TM7	-	-	-	-	-
TM8	-	-	-	-	-
TM9	-	-	-	-	-
TCA10	-	-	-	-	-
TCA11	-	-	-	-	-
TCA12	-	-	-	-	-
TCA13	-	-	-	-	-
TCA14	-	-	-	-	-
TCA15	-	-	-	-	-
TCA16	-	-	-	-	-
TCA17	-	-	-	-	-
TCA18	-	-	-	-	-
TCA19	-	-	-	-	-
altro	0	0	-	-	-
tot.	16	15 041	0.889	0.074	0.083

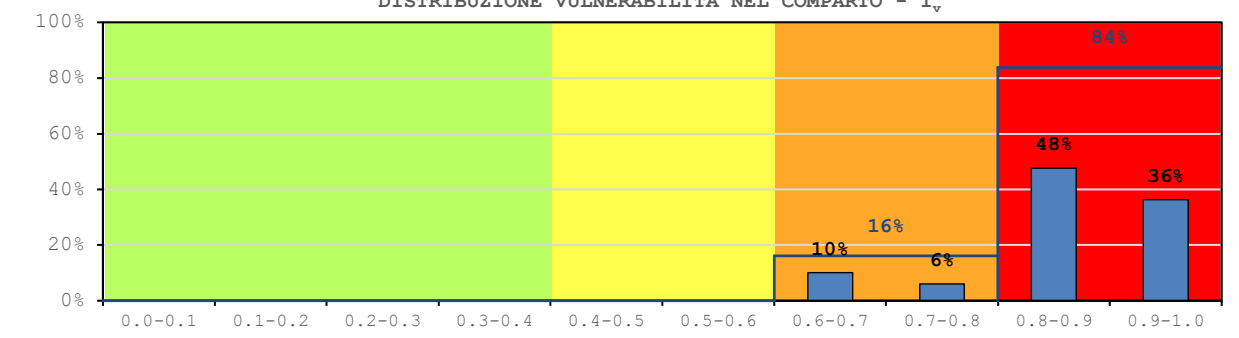
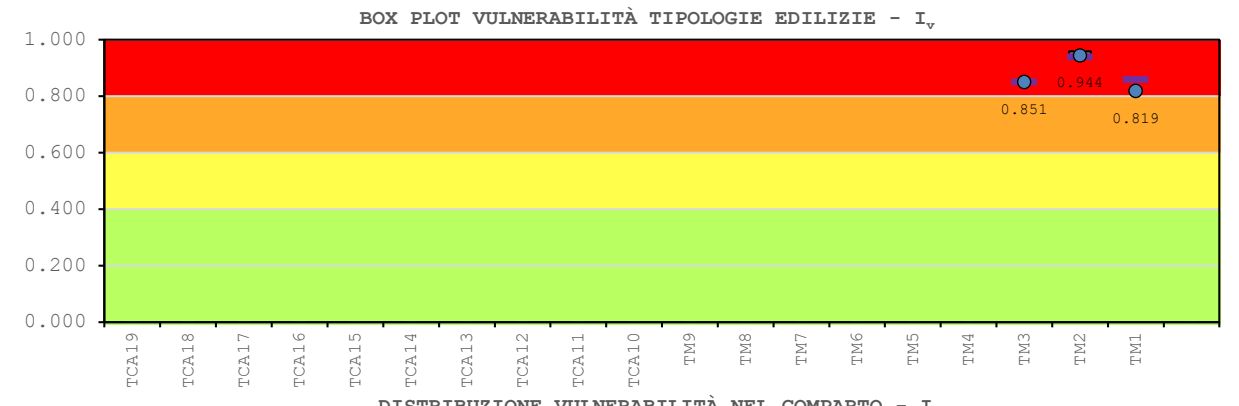
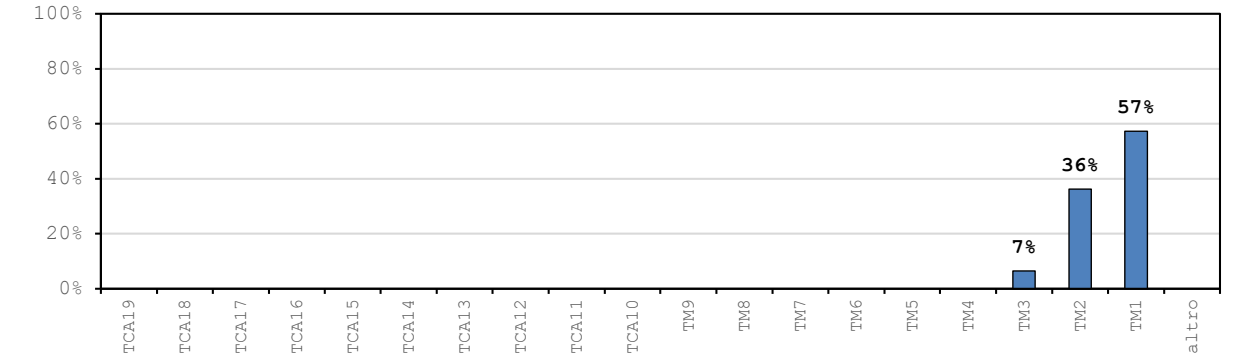
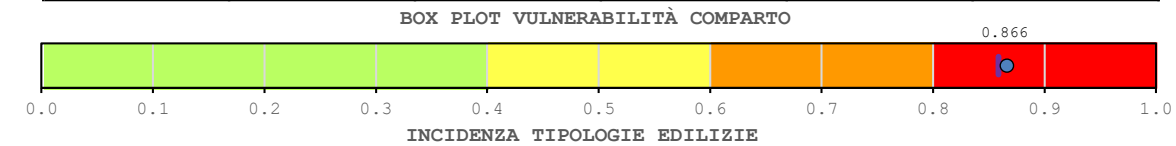


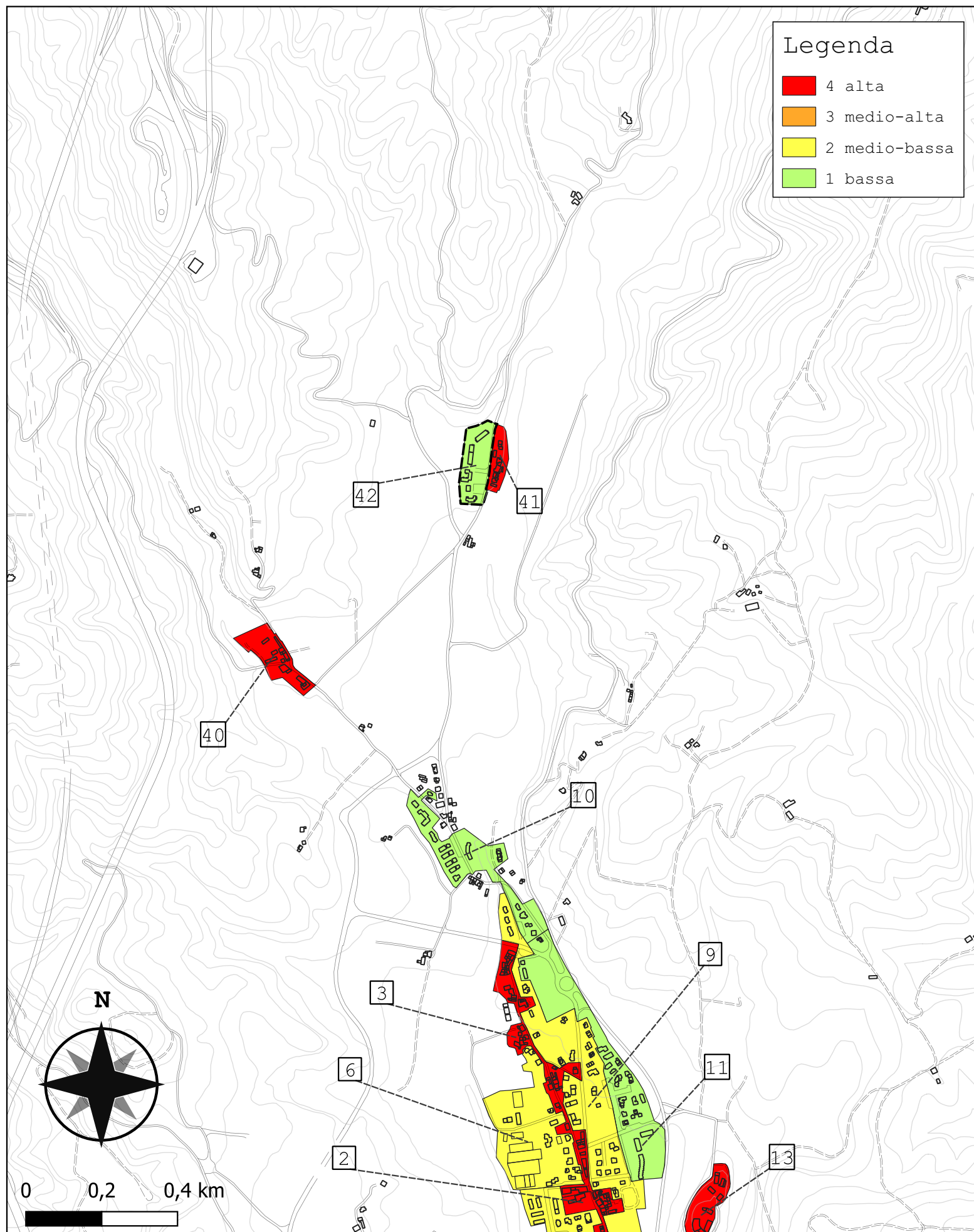


Legenda

- 4 alta
- 3 medio-alta
- 2 medio-bassa
- 1 bassa

Comparto 41		Ruzza 1			
Incidenza vol. comparto a livello comunale 0.3%					
Tipologie	Num. Ed.	Vol. [m ³]	I _{v,medio}	stdev	COV
TM1	14	4 777	0.819	0.050	0.059
TM2	3	3 025	0.944	0.012	0.012
TM3	1	543	0.851	-	-
TM4	-	-	-	-	-
TM5	-	-	-	-	-
TM6	-	-	-	-	-
TM7	-	-	-	-	-
TM8	-	-	-	-	-
TM9	-	-	-	-	-
TCA10	-	-	-	-	-
TCA11	-	-	-	-	-
TCA12	-	-	-	-	-
TCA13	-	-	-	-	-
TCA14	-	-	-	-	-
TCA15	-	-	-	-	-
TCA16	-	-	-	-	-
TCA17	-	-	-	-	-
TCA18	-	-	-	-	-
TCA19	-	-	-	-	-
altro	0	0	-	-	-
tot.	18	8 344	0.866	0.059	0.068

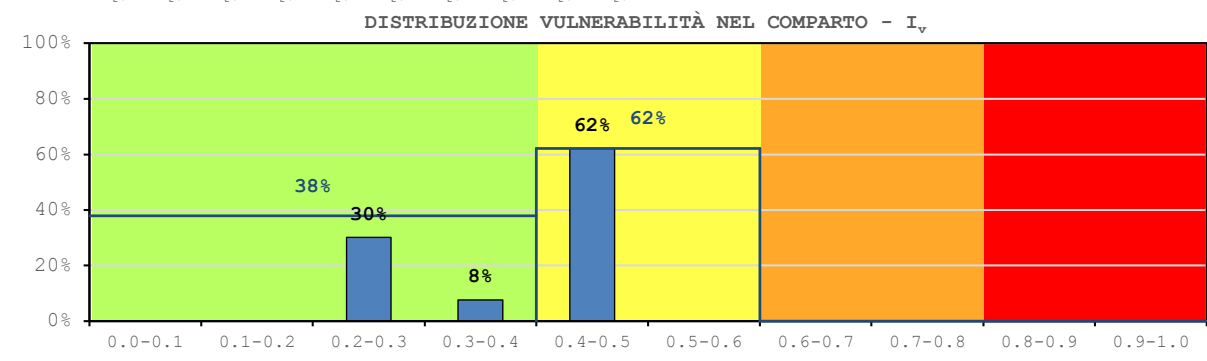
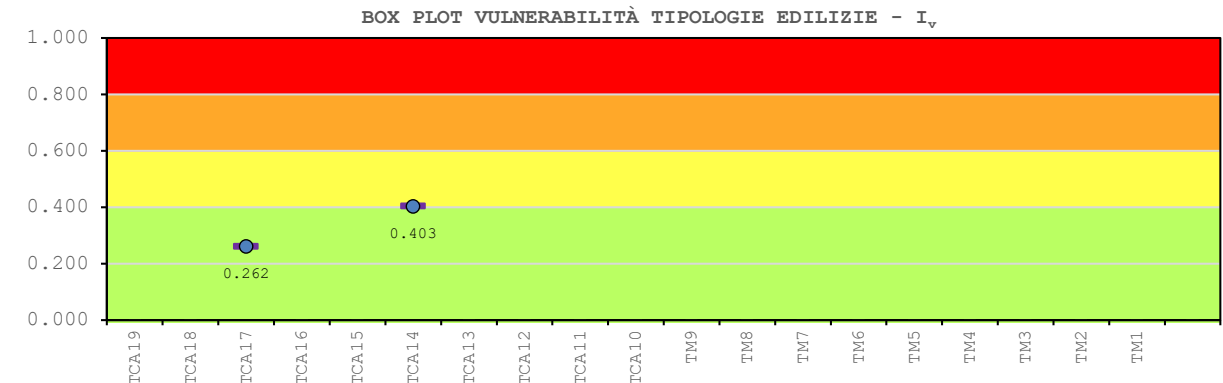
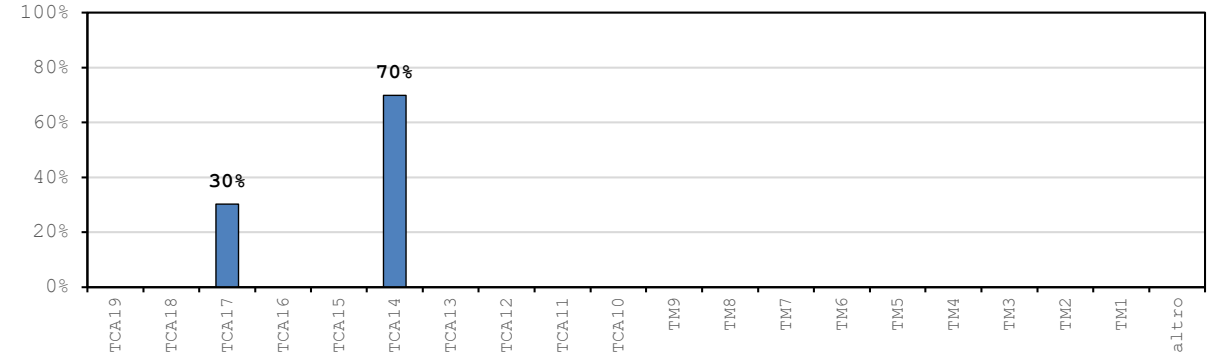
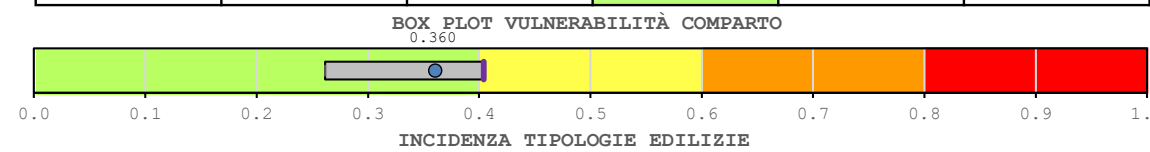


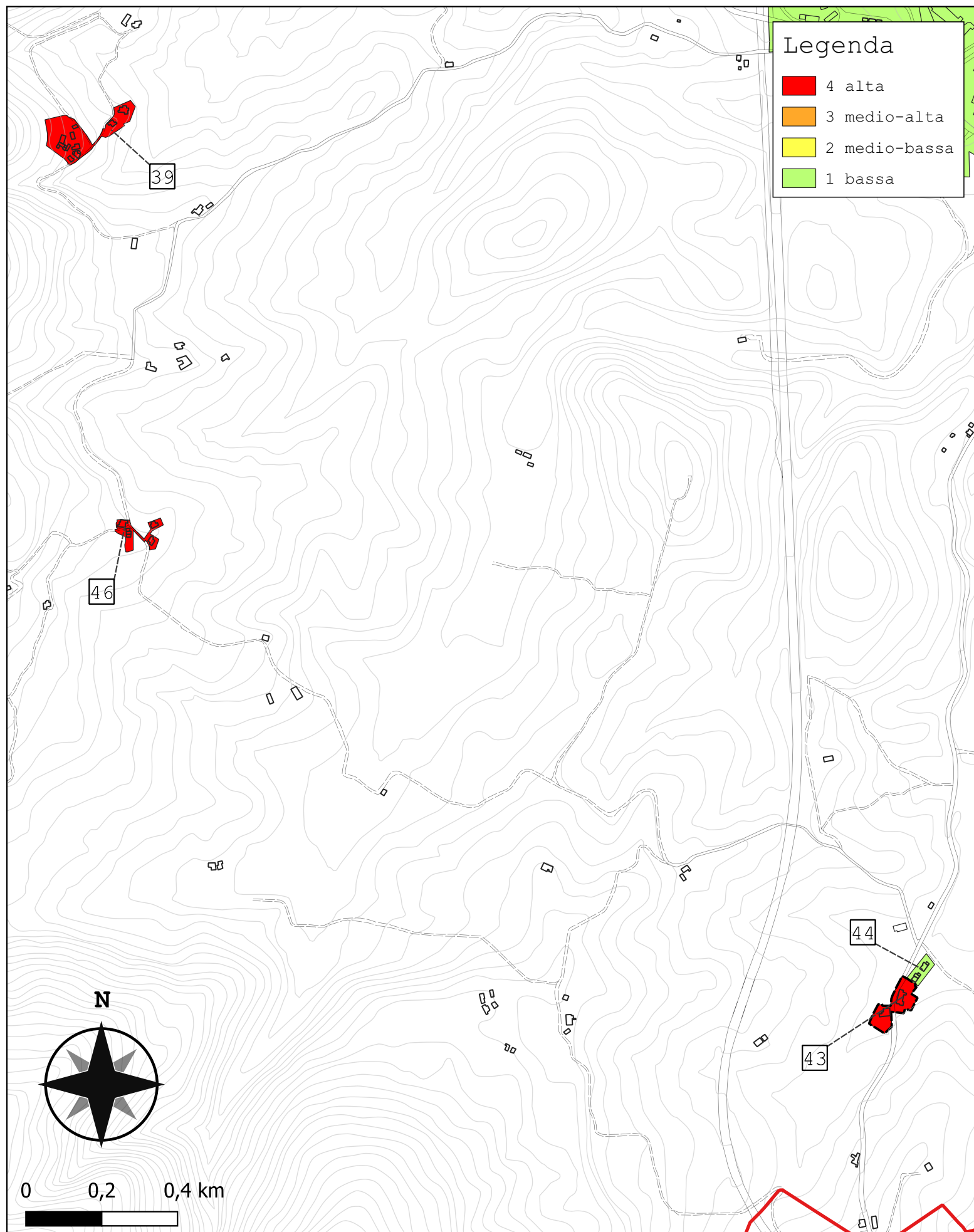


Legenda

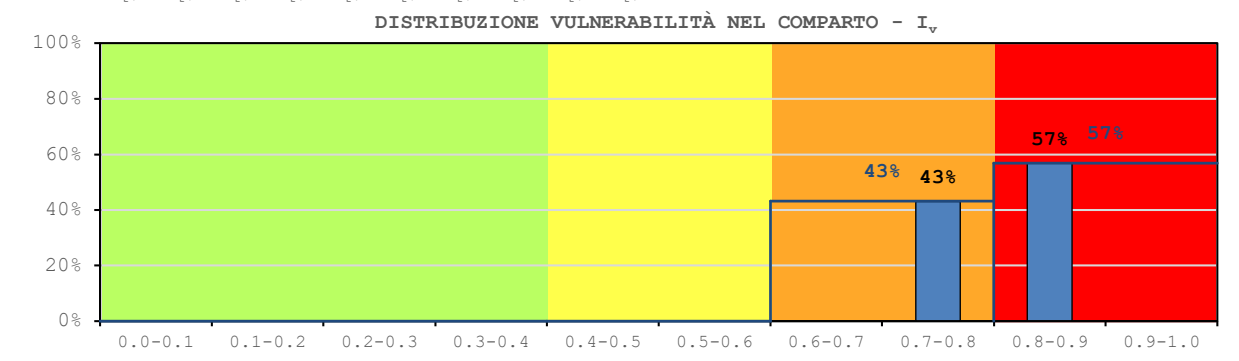
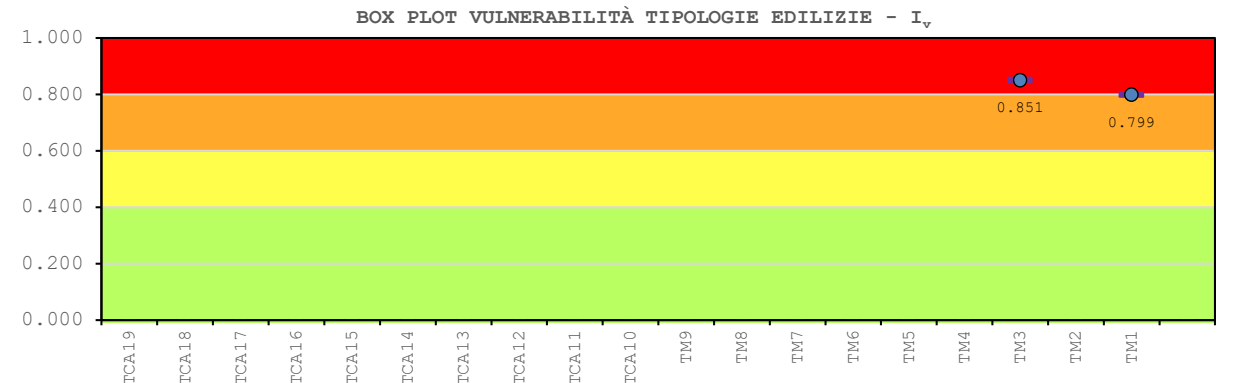
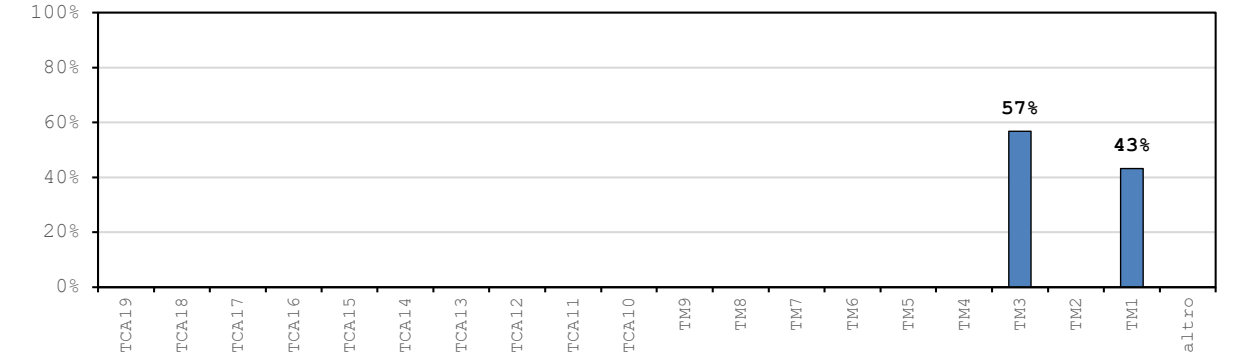
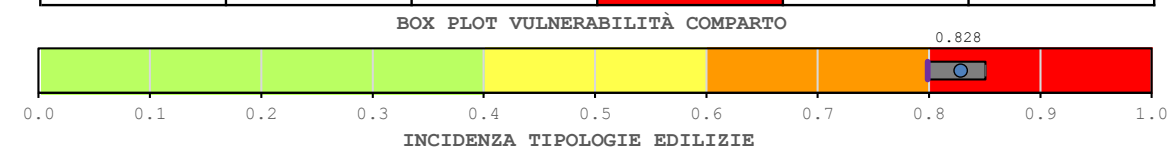
- 4 alta
- 3 medio-alta
- 2 medio-bassa
- 1 bassa

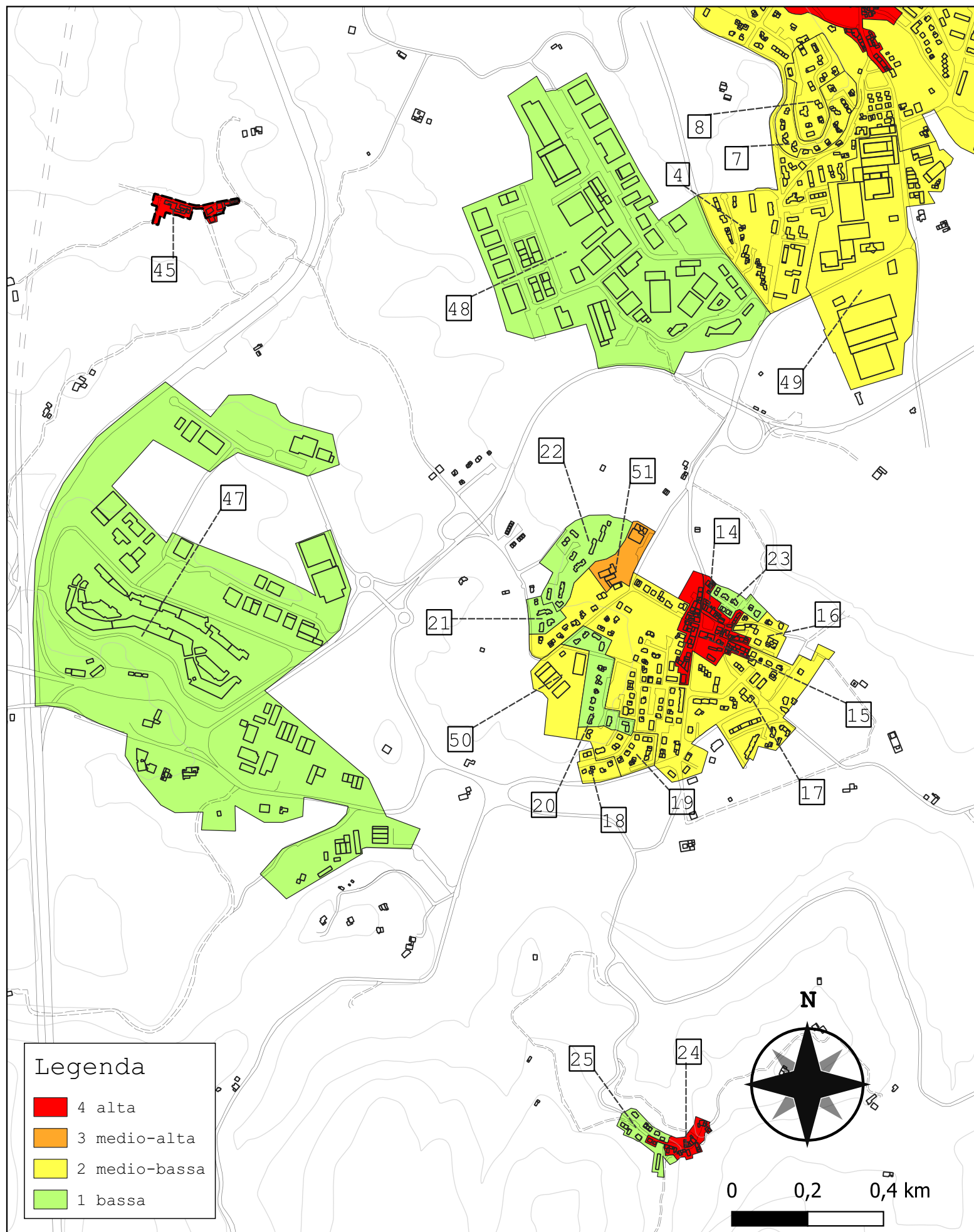
Comparto 42		Ruzza 2			
Incidenza vol. comparto a livello comunale 0.6%					
Tipologie	Num. Ed.	Vol. [m ³]	I _{v,medio}	stdev	COV
TM1	-	-	-	-	-
TM2	-	-	-	-	-
TM3	-	-	-	-	-
TM4	-	-	-	-	-
TM5	-	-	-	-	-
TM6	-	-	-	-	-
TM7	-	-	-	-	-
TM8	-	-	-	-	-
TM9	-	-	-	-	-
TCA10	-	-	-	-	-
TCA11	-	-	-	-	-
TCA12	-	-	-	-	-
TCA13	-	-	-	-	-
TCA14	12	13 263	0.403	0.003	0.007
TCA15	-	-	-	-	-
TCA16	-	-	-	-	-
TCA17	4	5 726	0.262	0.000	0.000
TCA18	-	-	-	-	-
TCA19	-	-	-	-	-
altro	0	0	-	-	-
tot.	16	18 989	0.360	0.063	0.176



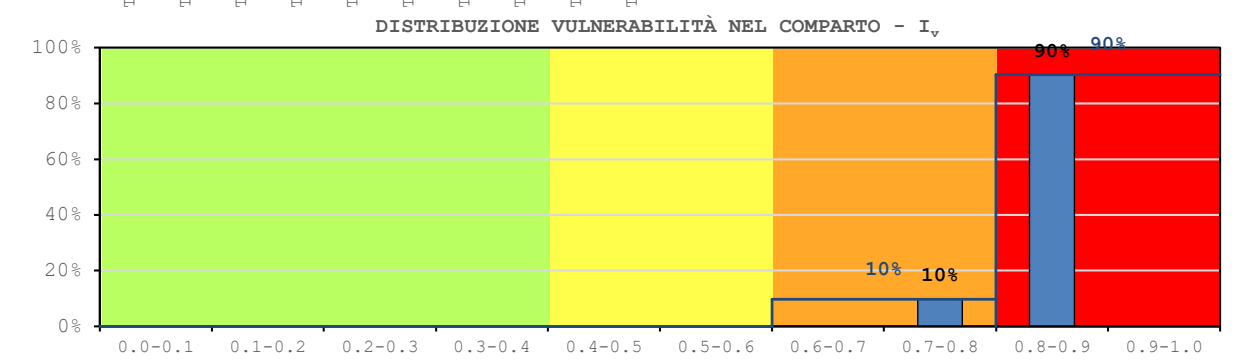
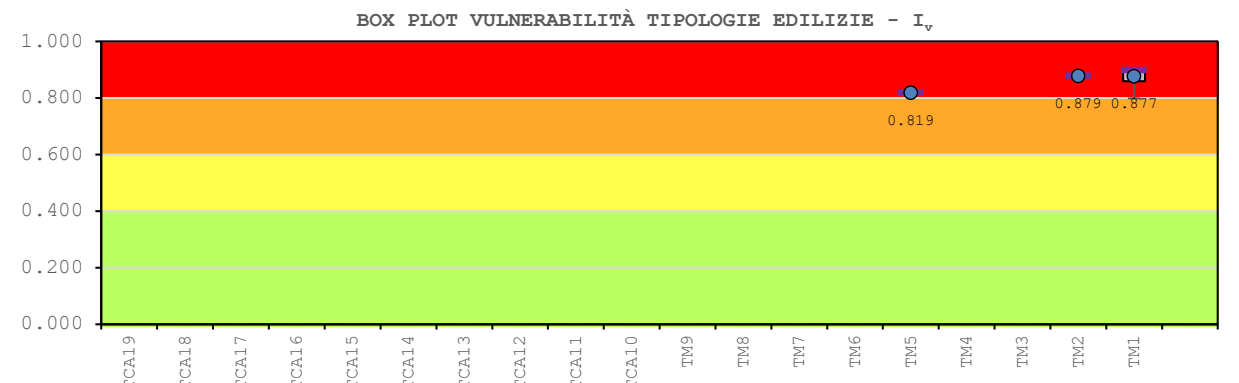
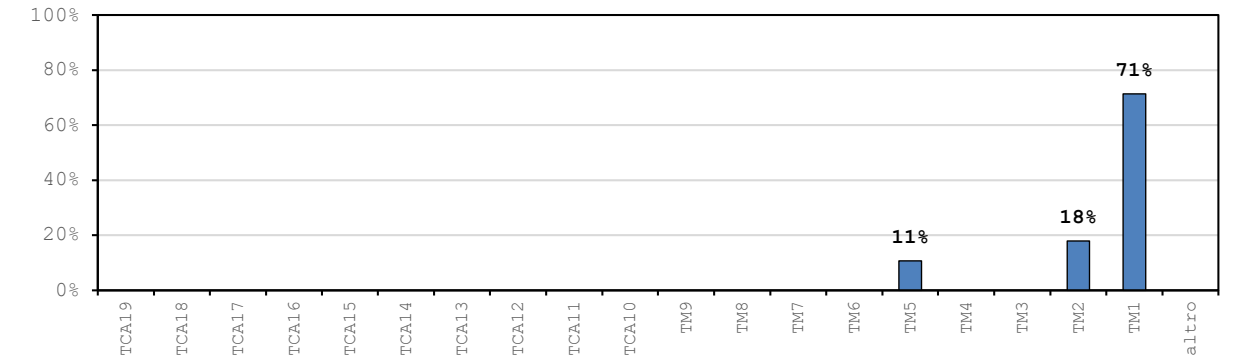
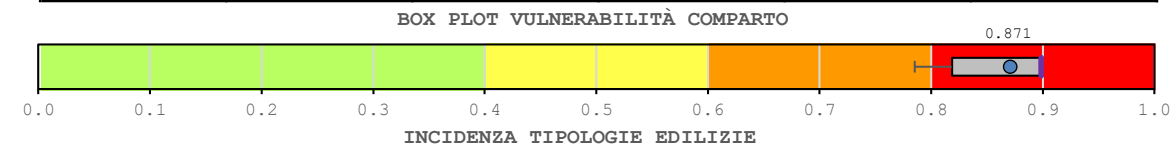


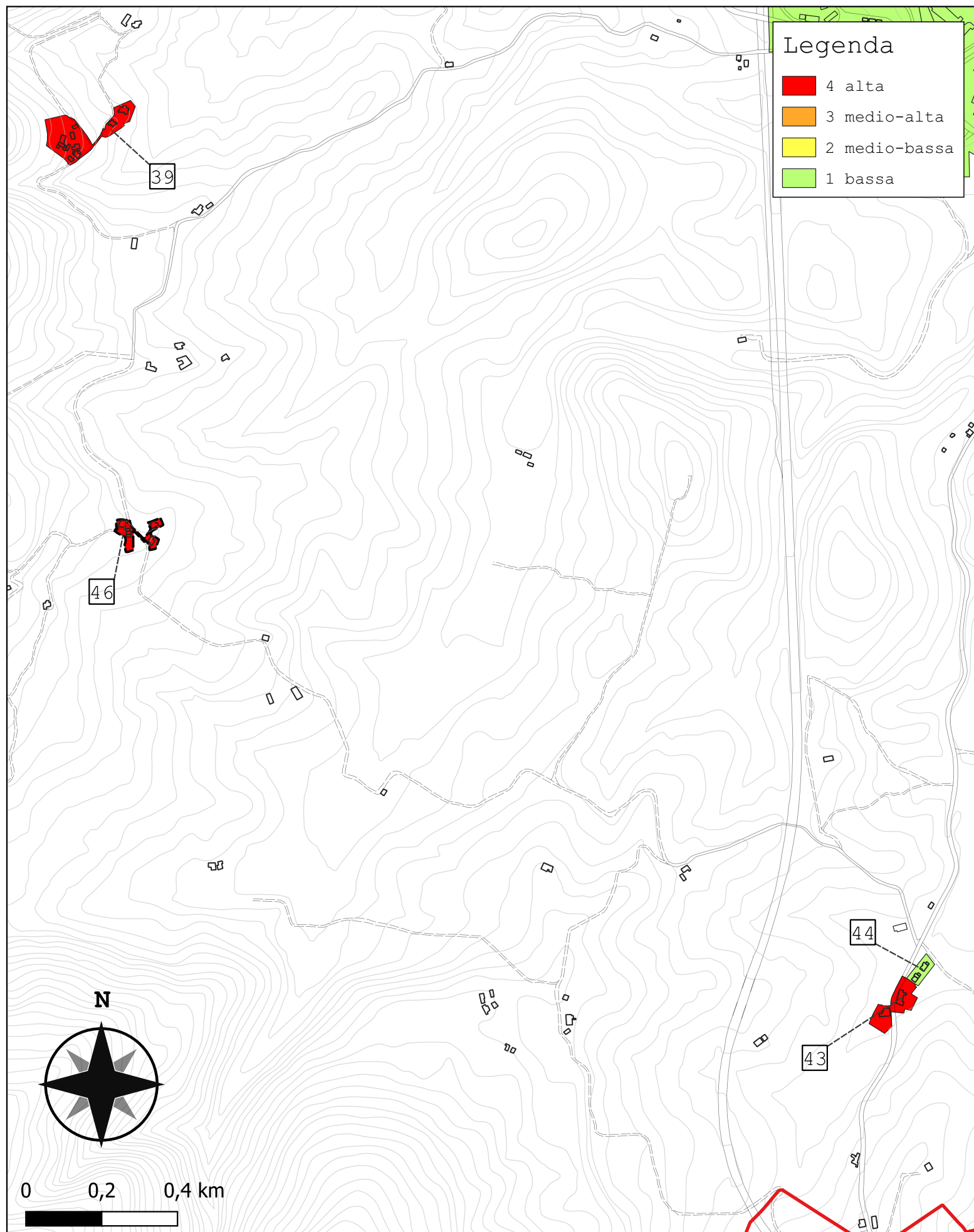
Comparto 43		Cornocchio 1			
Incidenza vol. comparto a livello comunale 0.2%					
Tipologie	Num. Ed.	Vol. [m ³]	I _{v,medio}	stdev	COV
TM1	1	2 750	0.799	-	-
TM2	-	-	-	-	-
TM3	1	3 624	0.851	-	-
TM4	-	-	-	-	-
TM5	-	-	-	-	-
TM6	-	-	-	-	-
TM7	-	-	-	-	-
TM8	-	-	-	-	-
TM9	-	-	-	-	-
TCA10	-	-	-	-	-
TCA11	-	-	-	-	-
TCA12	-	-	-	-	-
TCA13	-	-	-	-	-
TCA14	-	-	-	-	-
TCA15	-	-	-	-	-
TCA16	-	-	-	-	-
TCA17	-	-	-	-	-
TCA18	-	-	-	-	-
TCA19	-	-	-	-	-
altro	0	0	-	-	-
tot.	2	6 374	0.828	0.037	0.044





Comparto 45		Camoggiano			
Incidenza vol. comparto a livello comunale 0.4%					
Tipologie	Num. Ed.	Vol. [m ³]	I _{v,medio}	stdev	COV
TM1	8	8 386	0.877	0.041	0.046
TM2	1	2 101	0.879	-	-
TM3	-	-	-	-	-
TM4	-	-	-	-	-
TM5	3	1 263	0.819	0.000	0.000
TM6	-	-	-	-	-
TM7	-	-	-	-	-
TM8	-	-	-	-	-
TM9	-	-	-	-	-
TCA10	-	-	-	-	-
TCA11	-	-	-	-	-
TCA12	-	-	-	-	-
TCA13	-	-	-	-	-
TCA14	-	-	-	-	-
TCA15	-	-	-	-	-
TCA16	-	-	-	-	-
TCA17	-	-	-	-	-
TCA18	-	-	-	-	-
TCA19	-	-	-	-	-
altro	0	0	-	-	-
tot.	12	11 750	0.871	0.042	0.049





Legenda

- 4 alta
- 3 medio-alta
- 2 medio-bassa
- 1 bassa

Comparto 46		Quaranta			
Incidenza vol. comparto a livello comunale 0.2%					
Tipologie	Num. Ed.	Vol. [m ³]	I _{v,medio}	stdev	COV
TM1	5	5 307	0.917	0.009	0.010
TM2	1	939	1.000	-	-
TM3	-	-	-	-	-
TM4	-	-	-	-	-
TM5	-	-	-	-	-
TM6	-	-	-	-	-
TM7	-	-	-	-	-
TM8	-	-	-	-	-
TM9	-	-	-	-	-
TCA10	-	-	-	-	-
TCA11	-	-	-	-	-
TCA12	-	-	-	-	-
TCA13	-	-	-	-	-
TCA14	-	-	-	-	-
TCA15	-	-	-	-	-
TCA16	-	-	-	-	-
TCA17	-	-	-	-	-
TCA18	-	-	-	-	-
TCA19	-	-	-	-	-
altro	0	0	-	-	-
tot.	6	6 245	0.930	0.033	0.036

