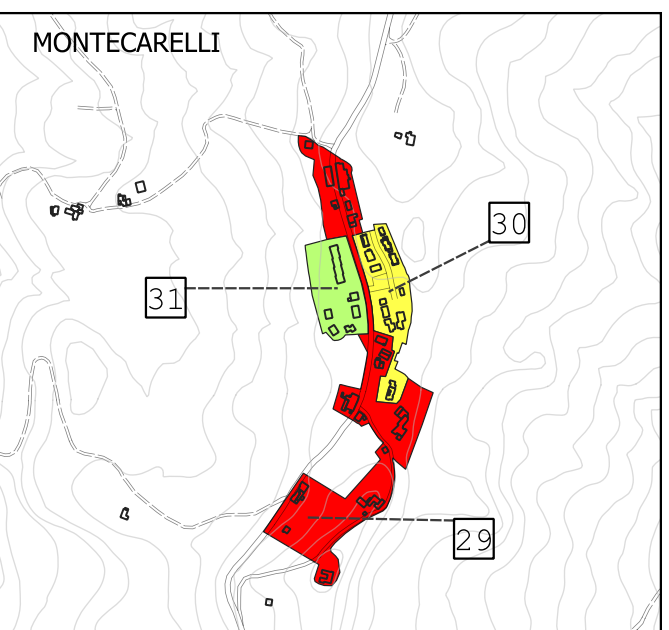
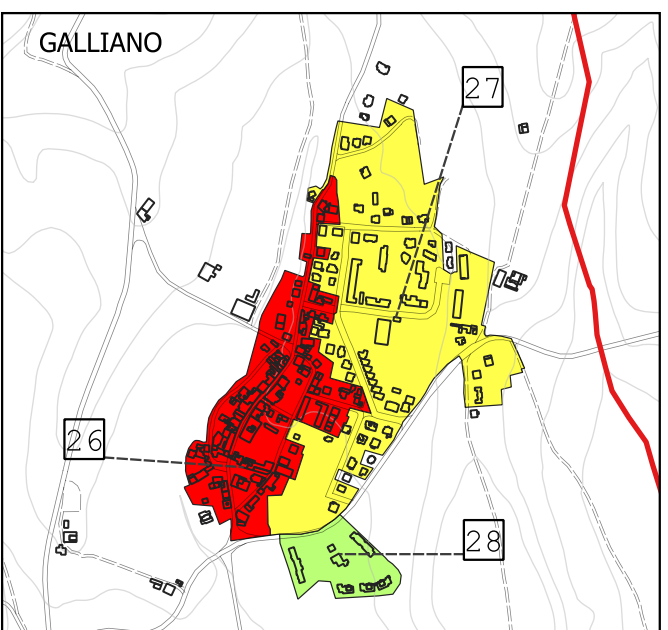
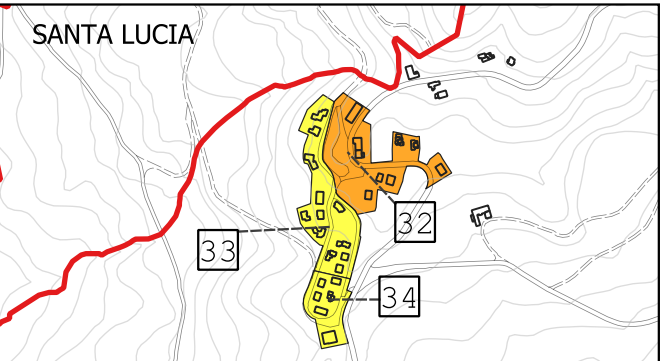
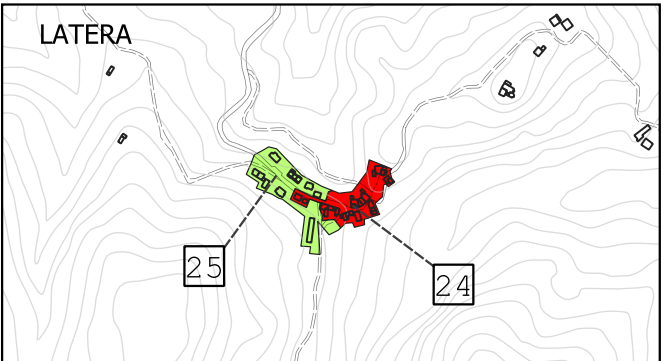
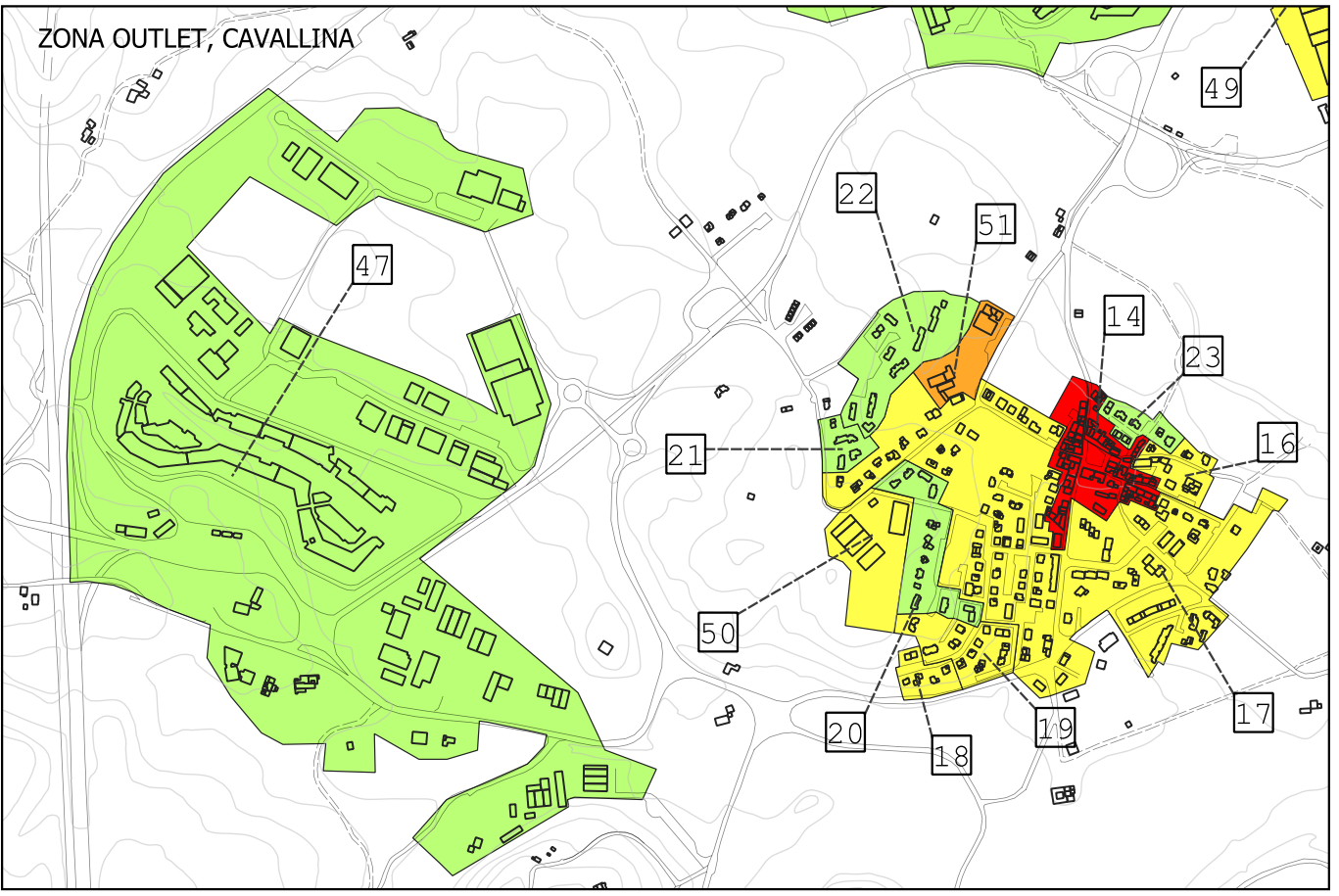
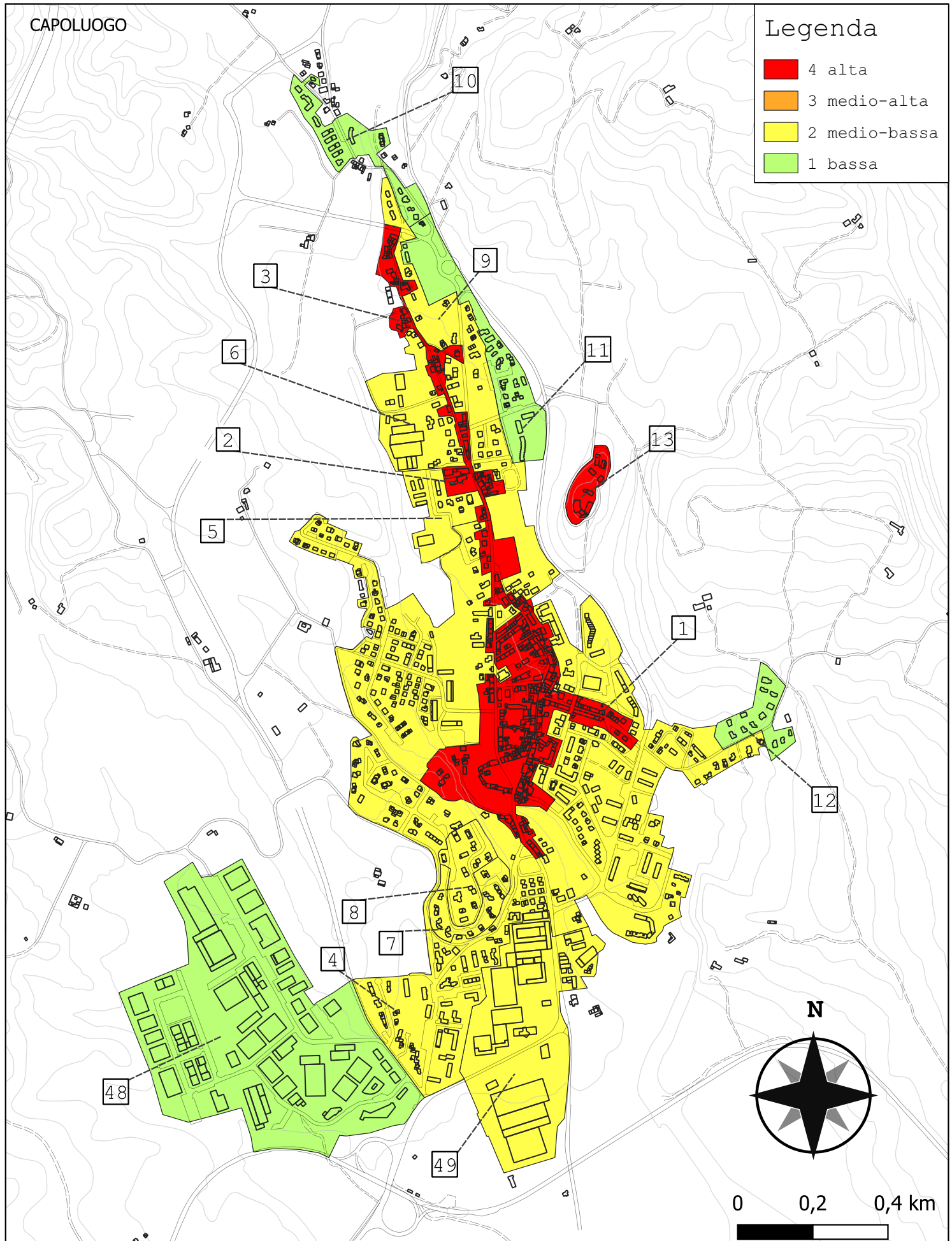
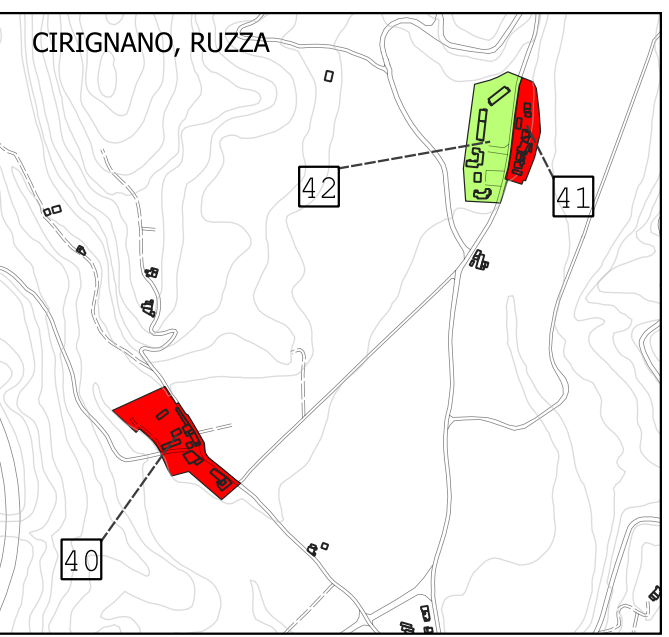
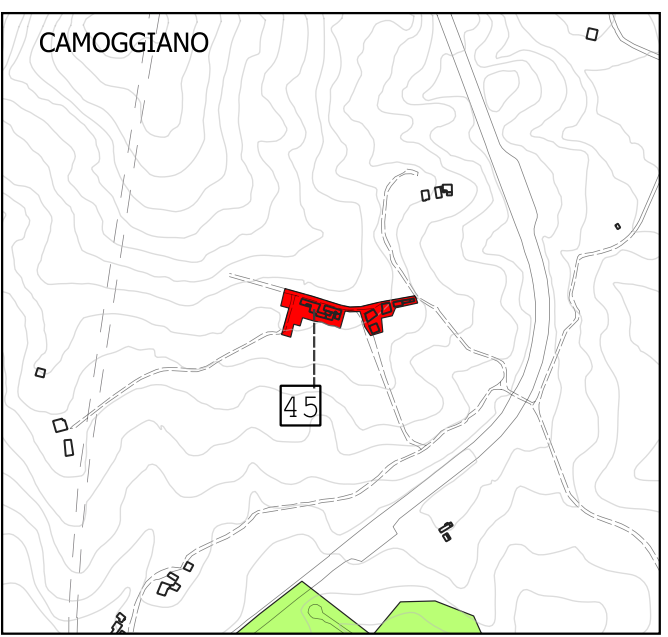
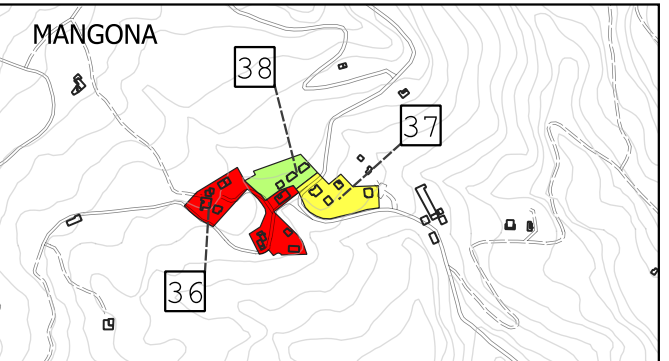
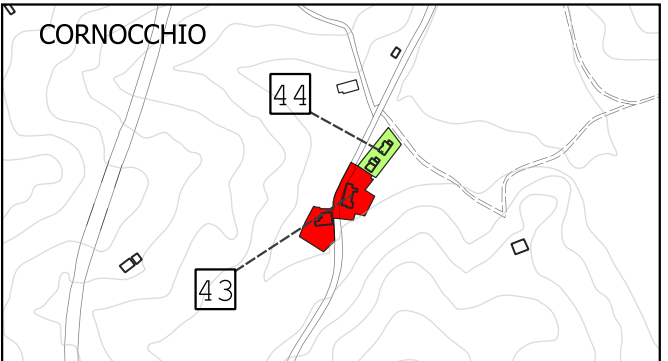
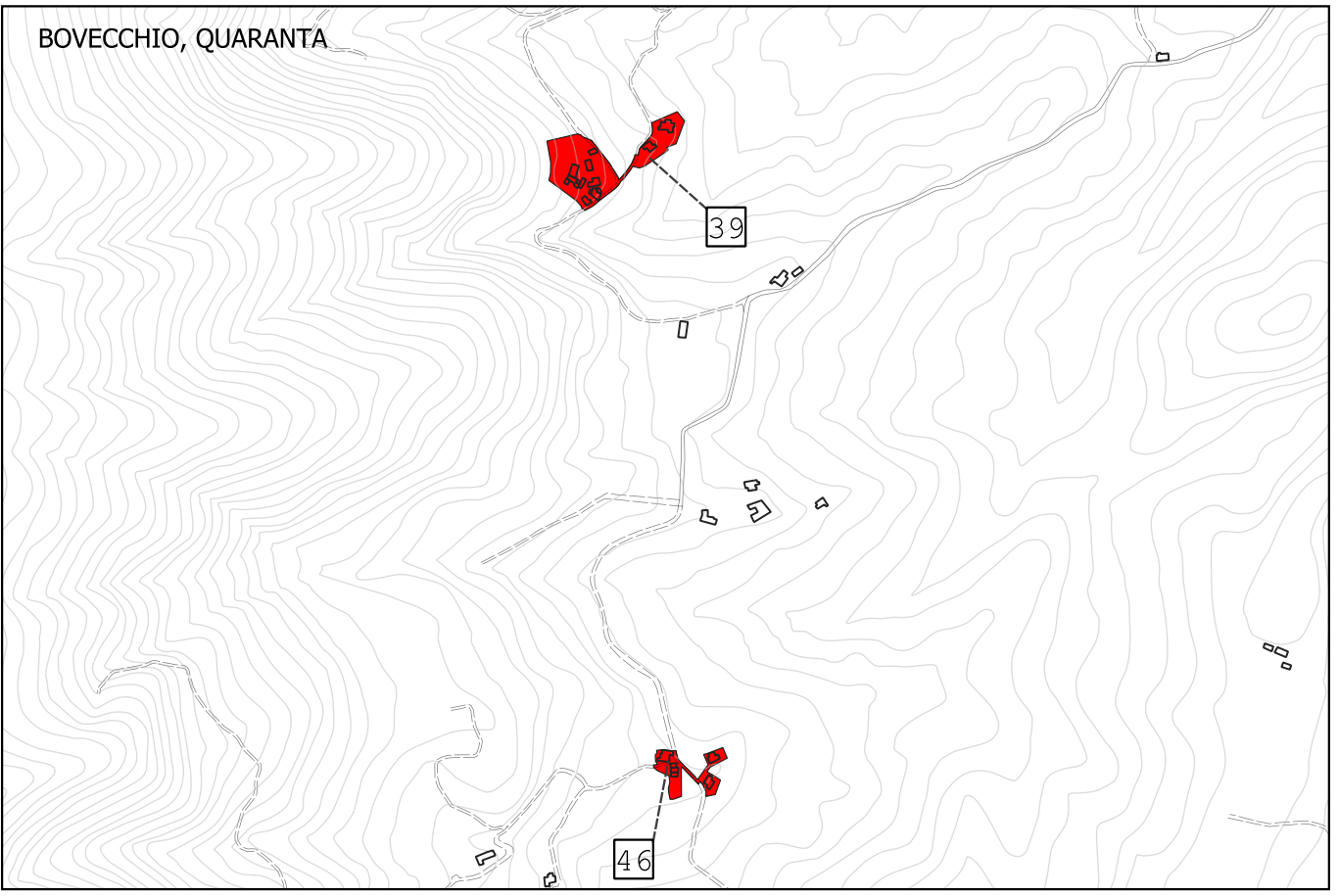
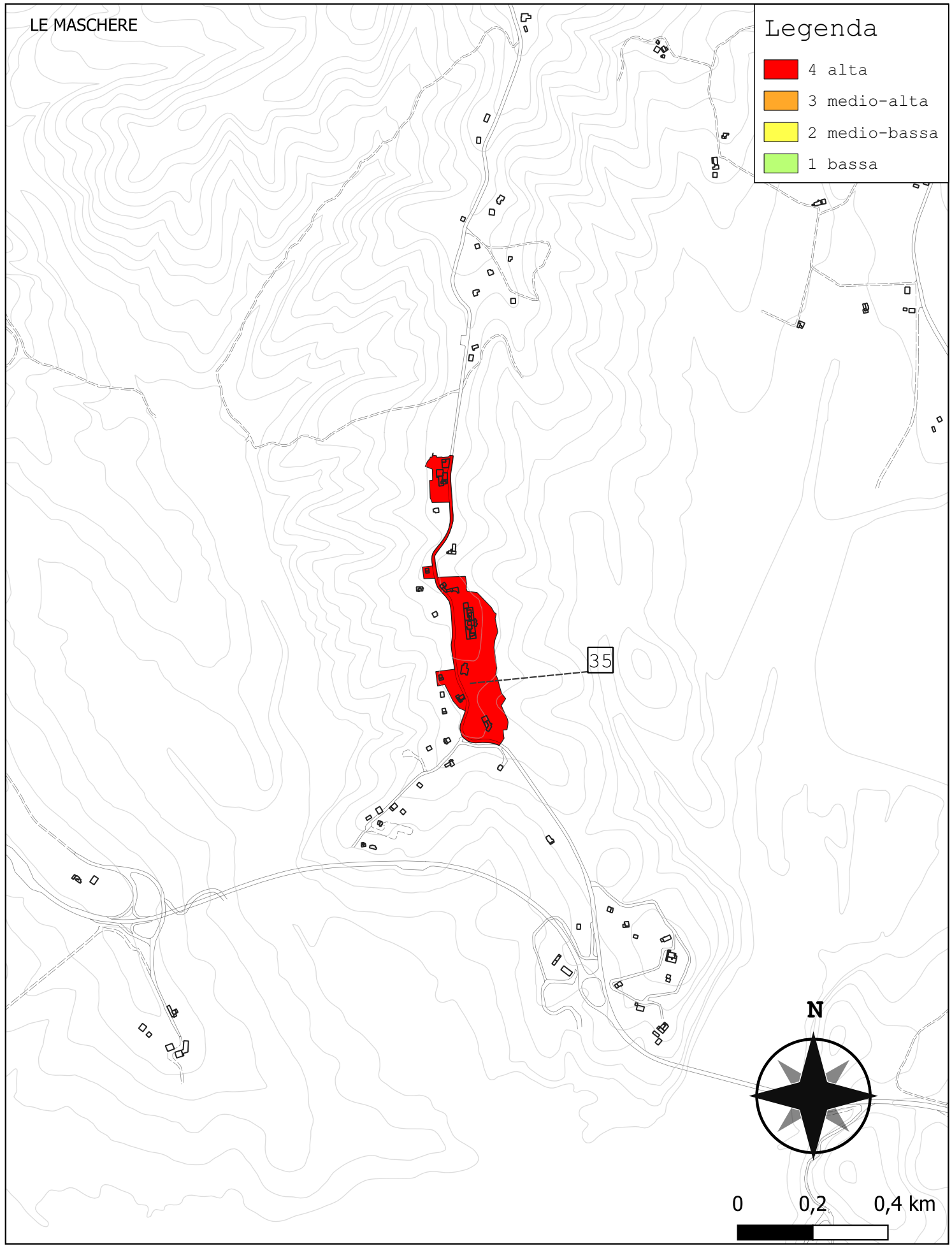


Legenda

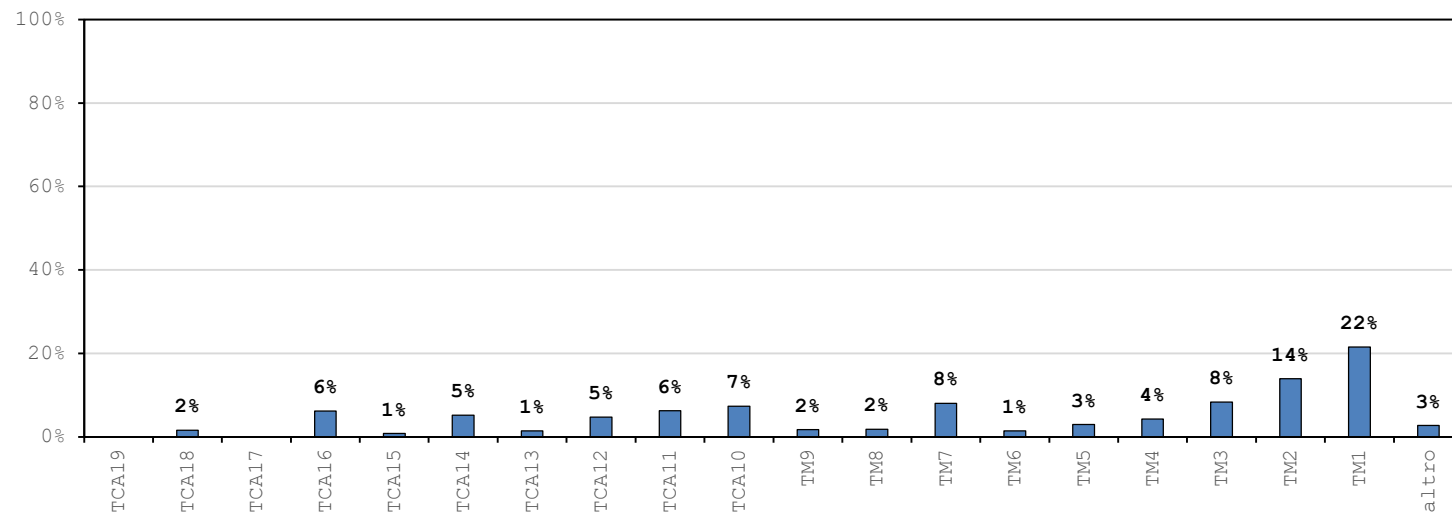
- 4 alta
- 3 medio-alta
- 2 medio-bassa
- 1 bassa



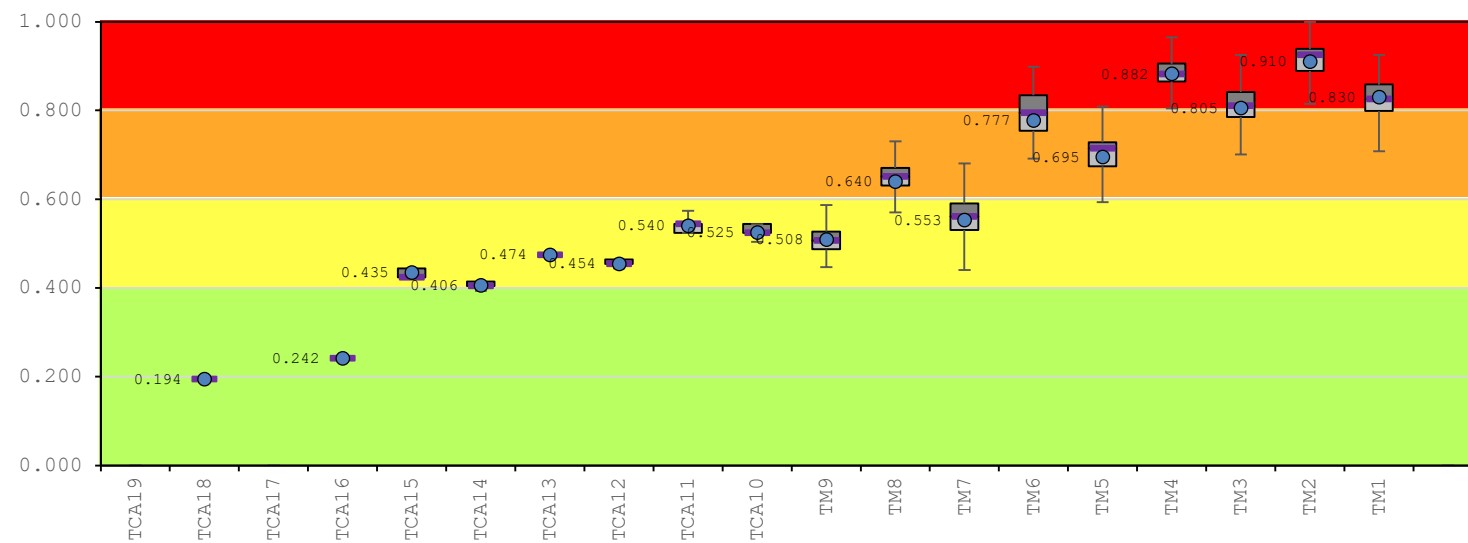




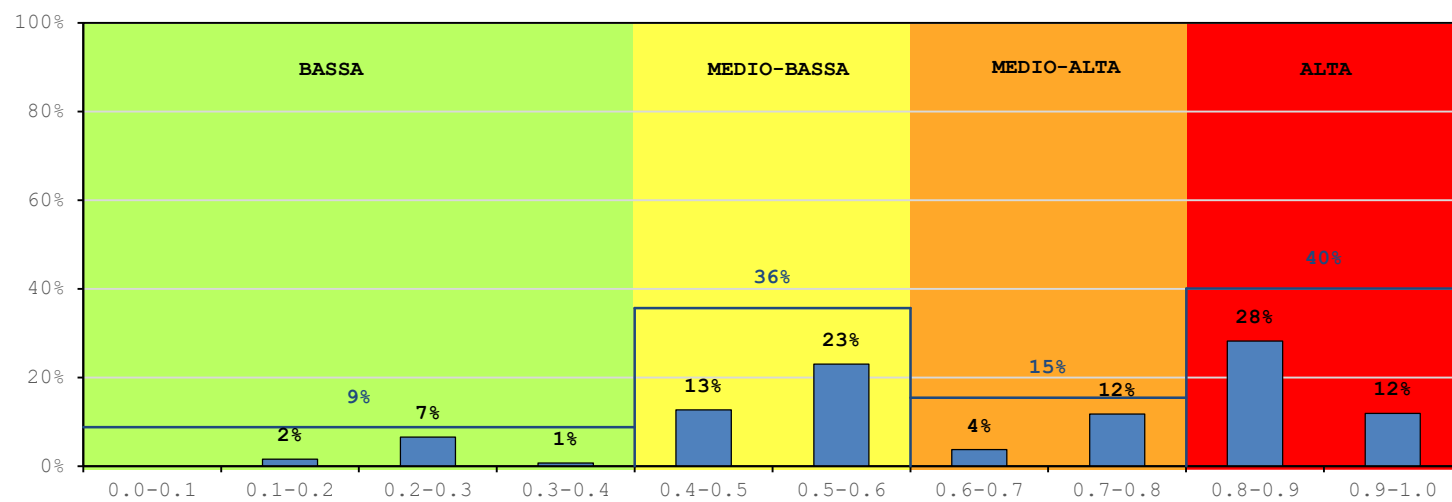
INCIDENZA TIPOLOGIE EDILIZIE



BOX PLOT VULNERABILITÀ TIPOLOGIE EDILIZIE - I_v



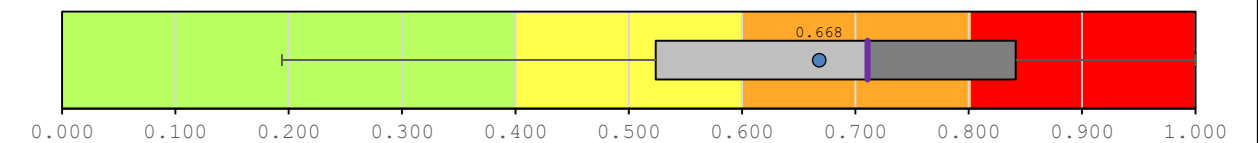
DISTRIBUZIONE VULNERABILITÀ NEL COMUNE - I_v



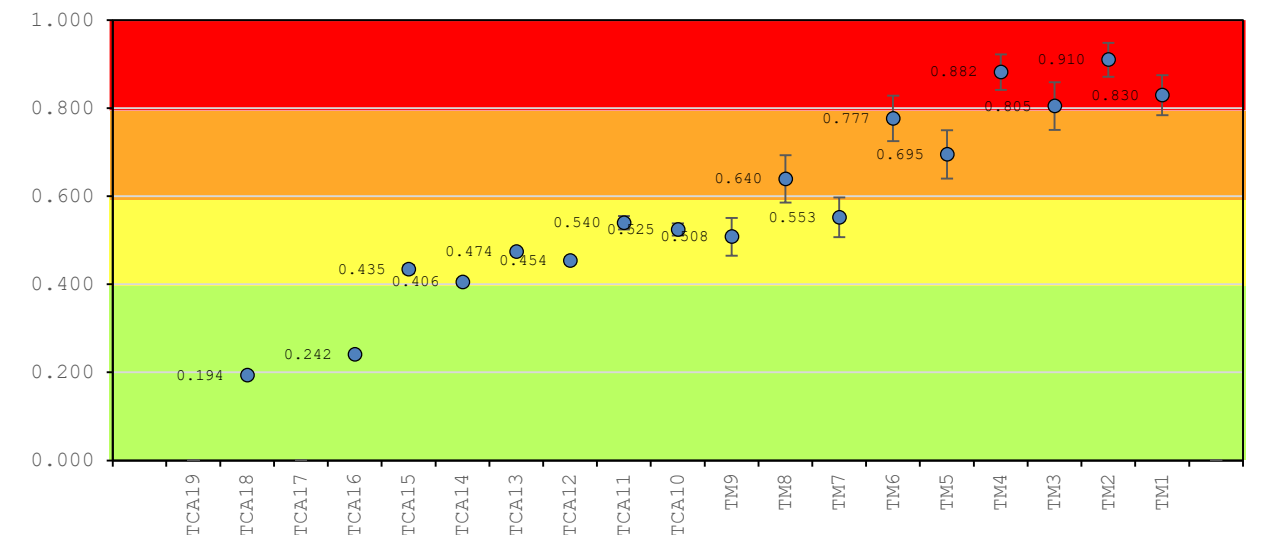
Tipologie significative a livello comunale

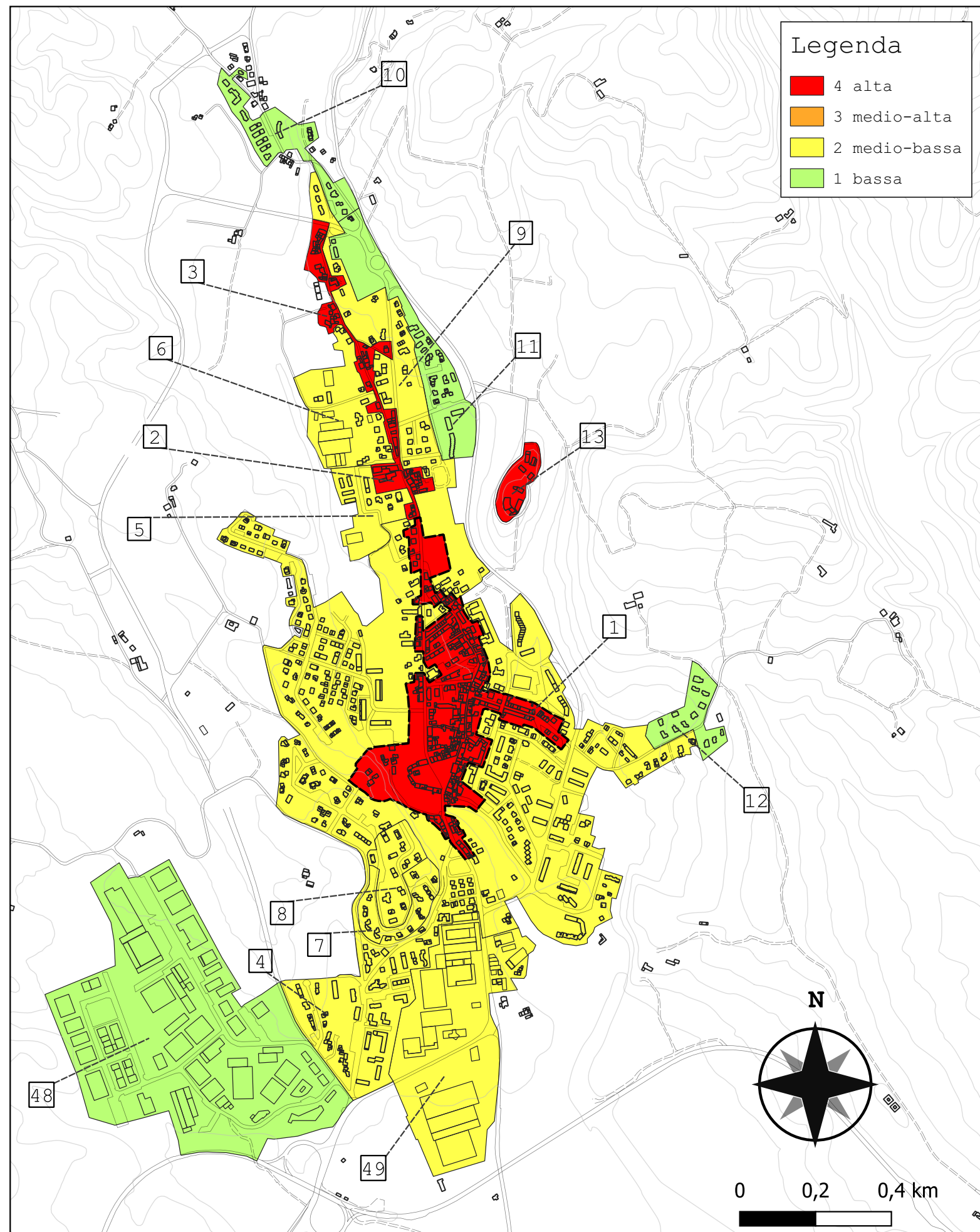
Tipologie	Num. Ed.	Vol. [m ³]	$I_{v,med}$	stdev	COV
TM1	796	661 207	0.830	0.045	0.055
TM2	365	426 878	0.910	0.039	0.042
TM3	370	256 423	0.805	0.054	0.068
TM4	98	131 553	0.882	0.040	0.046
TM5	186	89 964	0.695	0.055	0.078
TM6	36	42 683	0.777	0.051	0.064
TM7	459	246 994	0.553	0.045	0.080
TM8	62	55 231	0.640	0.054	0.083
TM9	127	52 416	0.508	0.043	0.084
TCA10	300	225 499	0.525	0.014	0.026
TCA11	52	192 734	0.540	0.015	0.029
TCA12	167	144 861	0.454	0.007	0.016
TCA13	15	43 542	0.474	0.006	0.013
TCA14	247	158 242	0.406	0.006	0.016
TCA15	10	25 229	0.435	0.010	0.022
TCA16	171	189 566	0.242	0.000	0.000
TCA17	-	-	-	-	-
TCA18	41	48 571	0.194	0.000	0.000
TCA19	-	-	-	-	-
altro	80	82 663	-	-	-
tot.	3 582	3 074 256	0.668	0.203	0.306

BOX PLOT VULNERABILITÀ COMUNE



VULNERABILITÀ TIPOLOGIE EDILIZIE - I_v

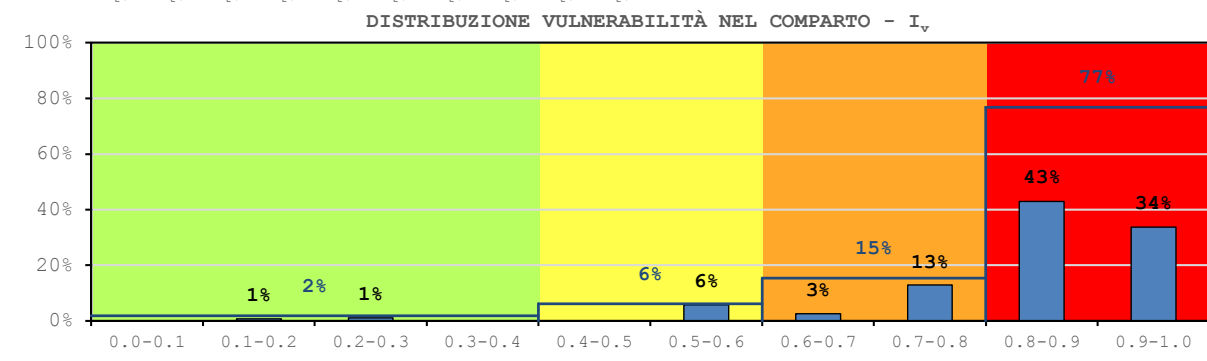
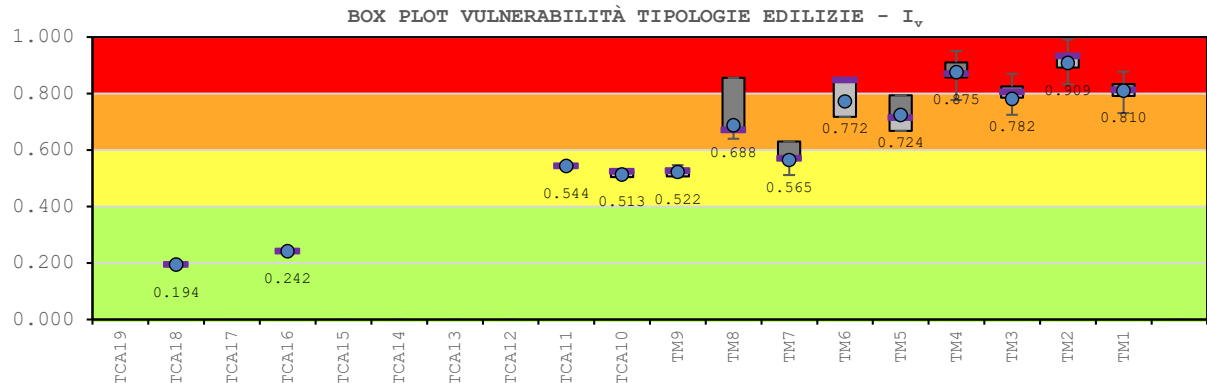
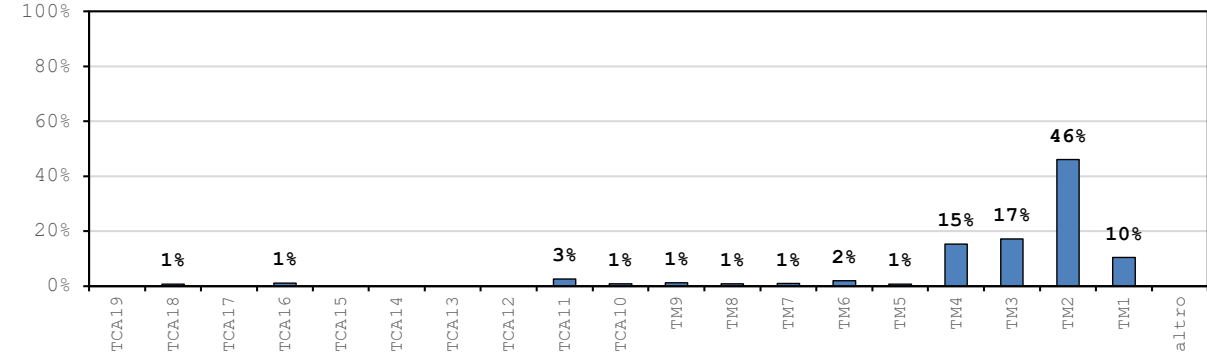
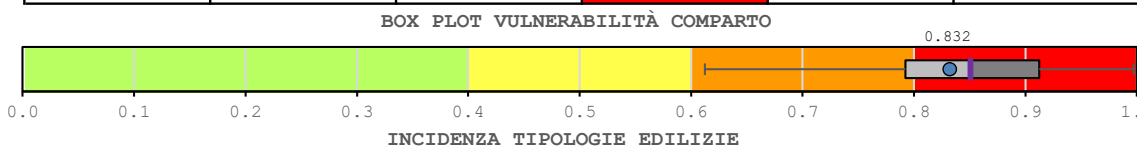


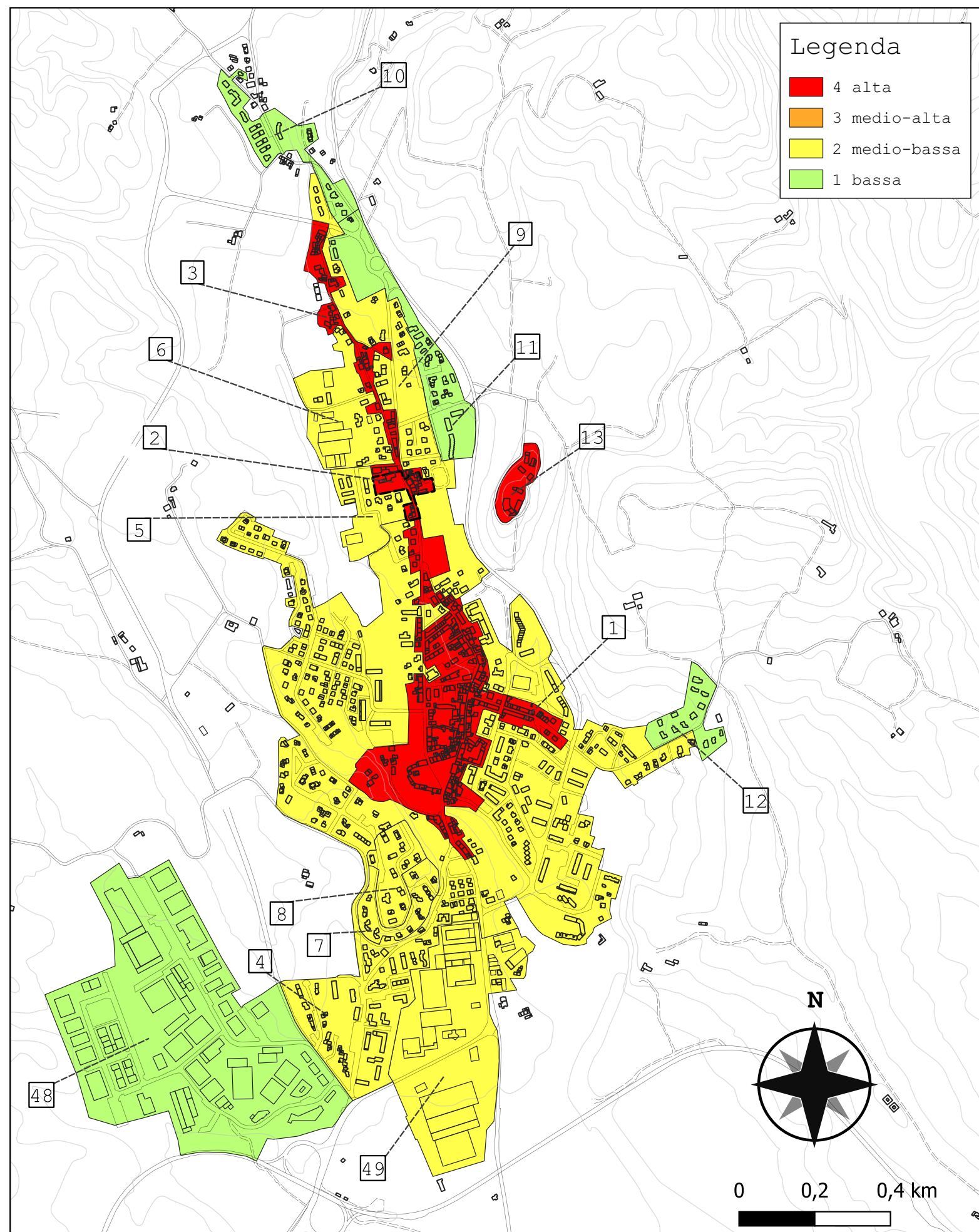


Legenda

- 4 alta
- 3 medio-alta
- 2 medio-bassa
- 1 bassa

Comparto 1		Barberino 1A			
Incidenza vol. comparto a livello comunale 9.9%					
Tipologie	Num. Ed.	Vol. [m ³]	I _{v,medio}	stdev	COV
TM1	64	31 846	0.810	0.040	0.049
TM2	143	139 768	0.909	0.034	0.037
TM3	93	52 071	0.782	0.063	0.079
TM4	51	46 350	0.875	0.041	0.047
TM5	8	2 306	0.724	0.059	0.081
TM6	4	6 168	0.772	0.062	0.077
TM7	6	2 948	0.565	0.045	0.078
TM8	8	2 446	0.688	0.089	0.124
TM9	10	3 712	0.522	0.015	0.028
TCA10	3	2 593	0.513	0.012	0.022
TCA11	1	7 890	0.544	-	-
TCA12	-	-	-	-	-
TCA13	-	-	-	-	-
TCA14	-	-	-	-	-
TCA15	-	-	-	-	-
TCA16	1	3 242	0.242	-	-
TCA17	-	-	-	-	-
TCA18	3	2 283	0.194	0.000	0.000
TCA19	-	-	-	-	-
altro	0	0	-	-	-
tot.	395	303 621	0.832	0.119	0.143

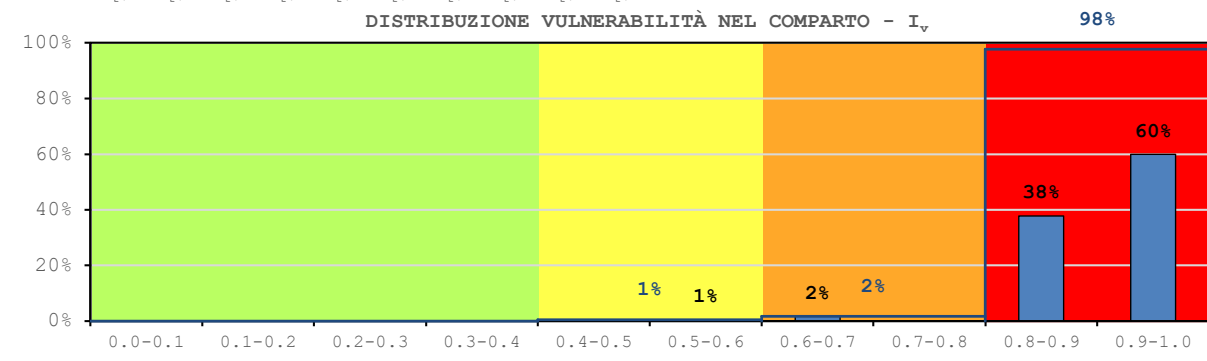
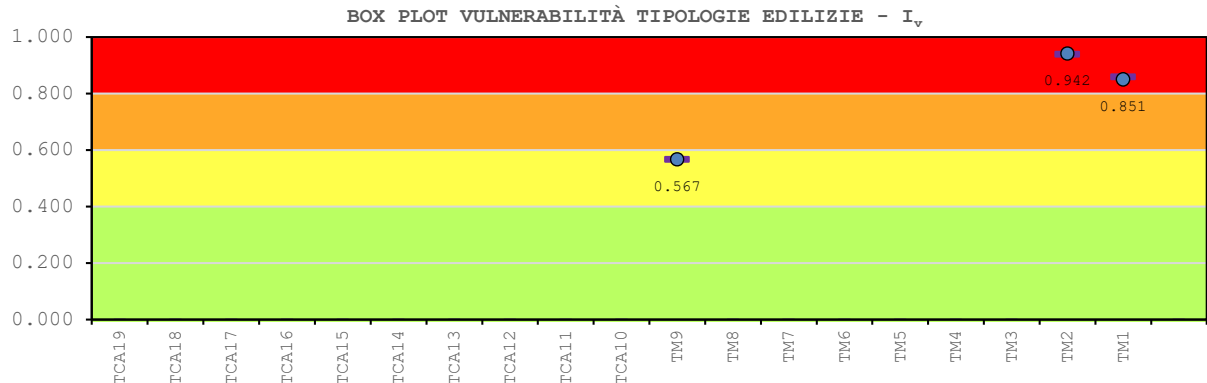
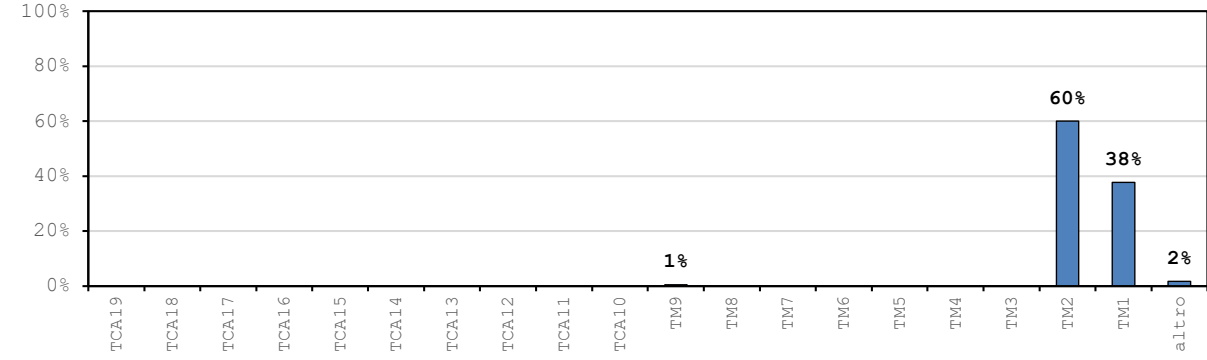
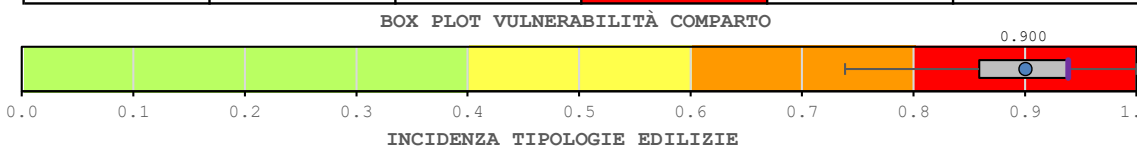


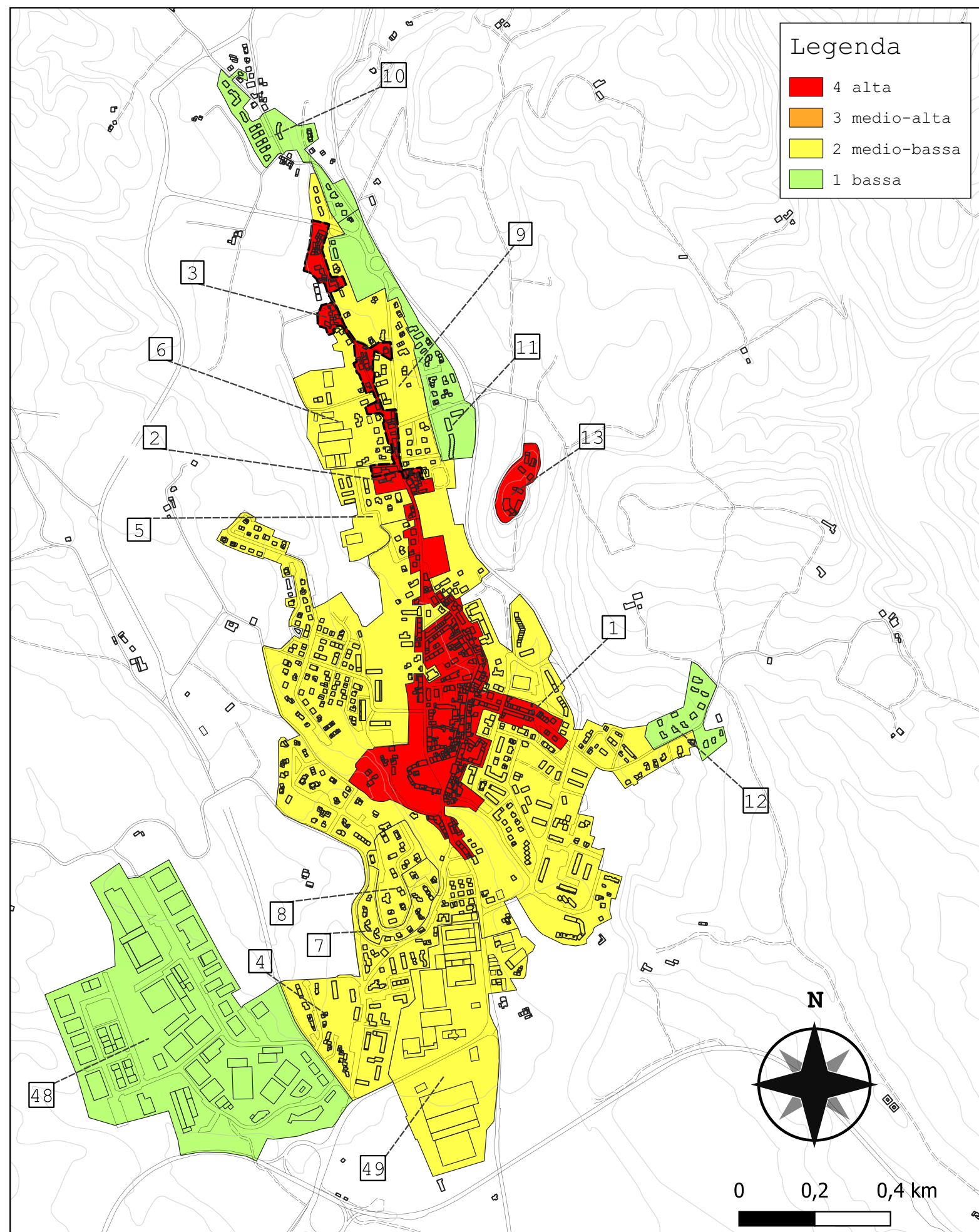


Legenda

- 4 alta
- 3 medio-alta
- 2 medio-bassa
- 1 bassa

Comparto 2		Barberino 1B			
Incidenza vol. comparto a livello comunale 0.5%					
Tipologie	Num. Ed.	Vol. [m ³]	I _{v,medio}	stdev	COV
TM1	7	6 248	0.851	0.015	0.018
TM2	16	9 923	0.942	0.022	0.024
TM3	-	-	-	-	-
TM4	-	-	-	-	-
TM5	-	-	-	-	-
TM6	-	-	-	-	-
TM7	-	-	-	-	-
TM8	-	-	-	-	-
TM9	1	86	0.567	-	-
TCA10	-	-	-	-	-
TCA11	-	-	-	-	-
TCA12	-	-	-	-	-
TCA13	-	-	-	-	-
TCA14	-	-	-	-	-
TCA15	-	-	-	-	-
TCA16	-	-	-	-	-
TCA17	-	-	-	-	-
TCA18	-	-	-	-	-
TCA19	-	-	-	-	-
altro	1	291	-	-	-
tot.	25	16 547	0.900	0.096	0.107

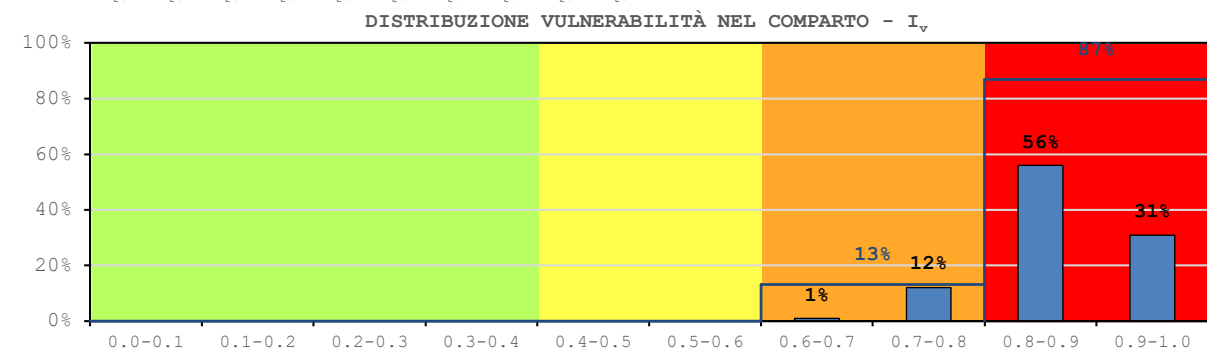
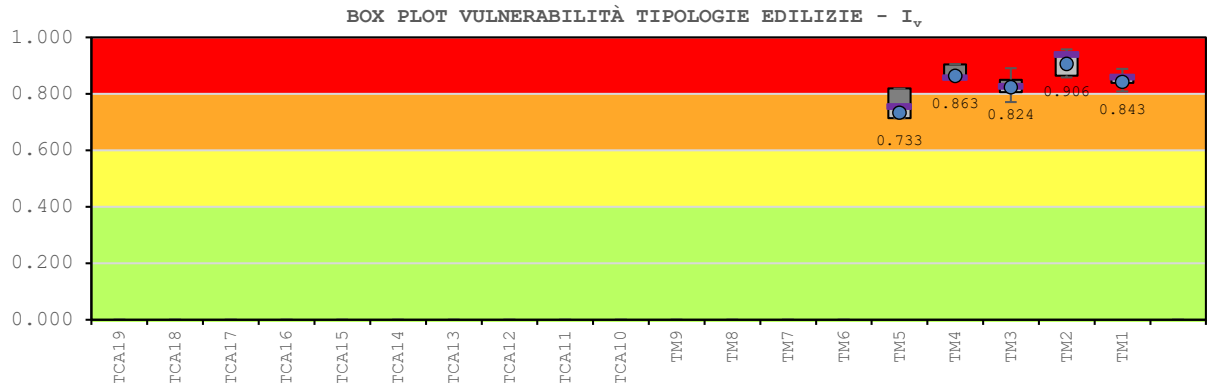
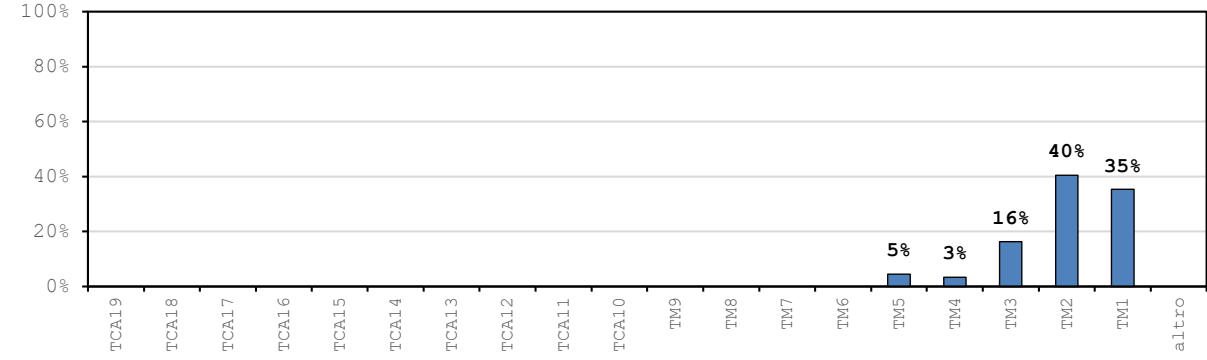
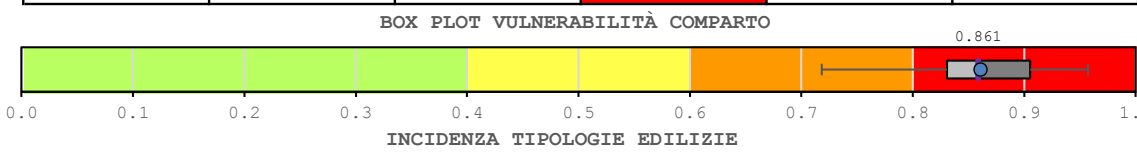


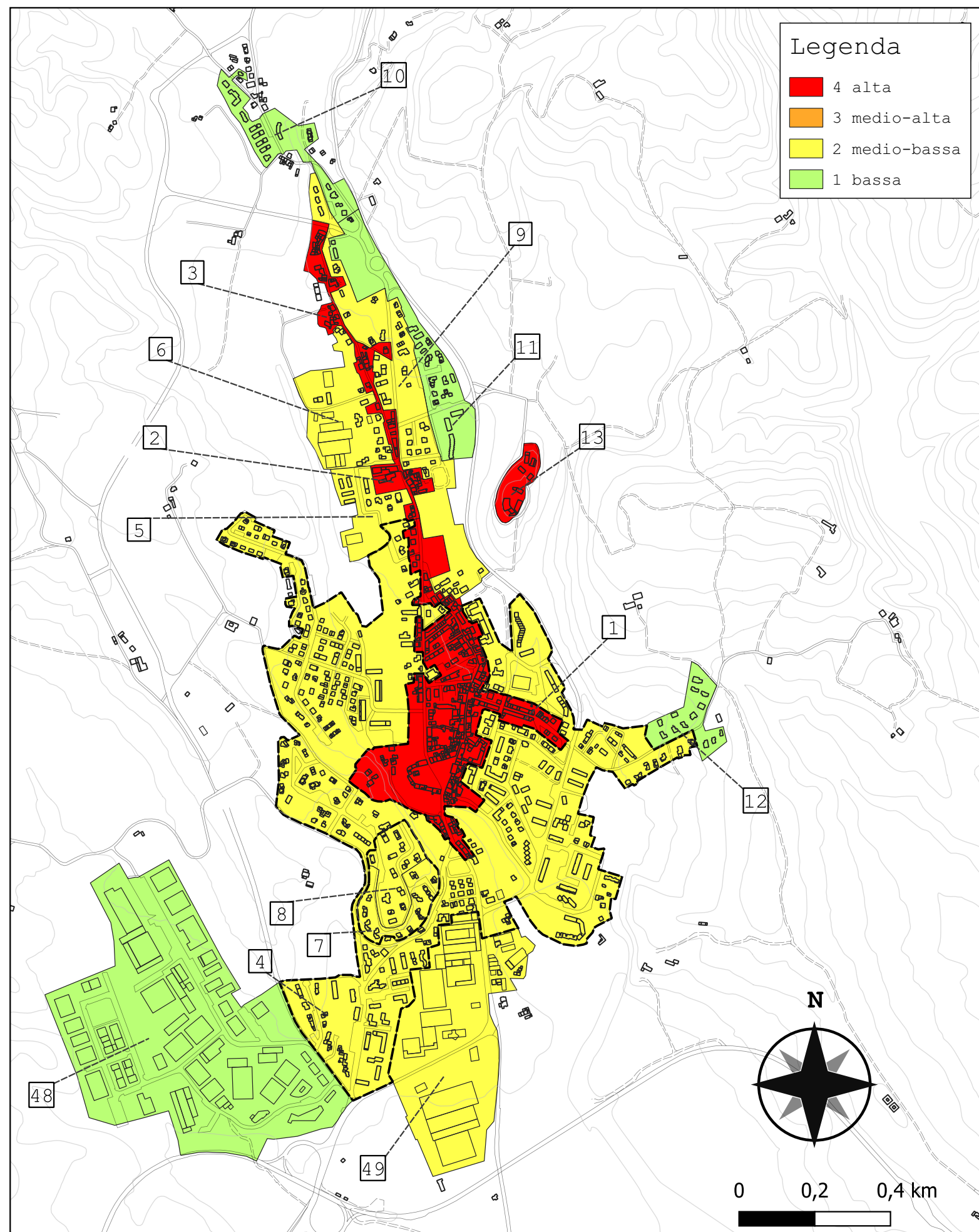


Legenda

- 4 alta
- 3 medio-alta
- 2 medio-bassa
- 1 bassa

Comparto 3		Barberino IC			
Incidenza vol. comparto a livello comunale 1.6%					
Tipologie	Num. Ed.	Vol. [m ³]	I _{v,medio}	stdev	COV
TM1	28	16 892	0.843	0.051	0.060
TM2	26	19 350	0.906	0.036	0.040
TM3	14	7 816	0.824	0.033	0.040
TM4	2	1 590	0.863	0.034	0.039
TM5	5	2 173	0.733	0.052	0.068
TM6	-	-	-	-	-
TM7	-	-	-	-	-
TM8	-	-	-	-	-
TM9	-	-	-	-	-
TCA10	-	-	-	-	-
TCA11	-	-	-	-	-
TCA12	-	-	-	-	-
TCA13	-	-	-	-	-
TCA14	-	-	-	-	-
TCA15	-	-	-	-	-
TCA16	-	-	-	-	-
TCA17	-	-	-	-	-
TCA18	-	-	-	-	-
TCA19	-	-	-	-	-
altro	0	0	-	-	-
tot.	75	47 821	0.861	0.060	0.070

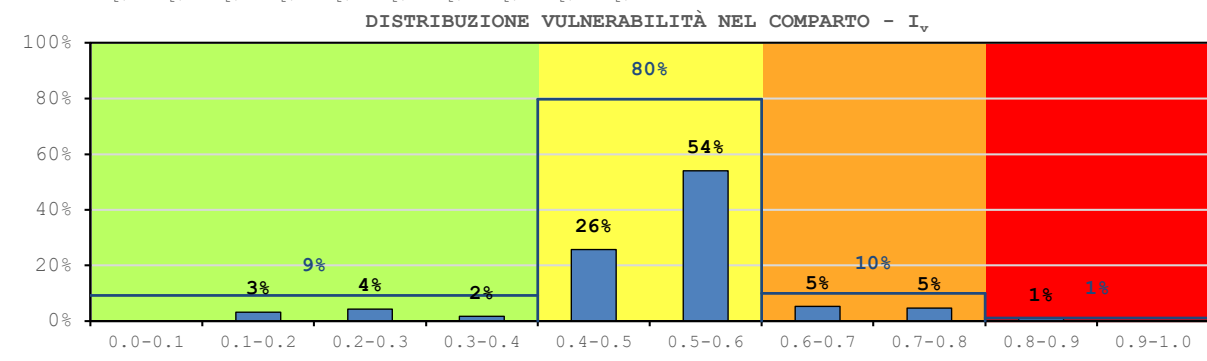
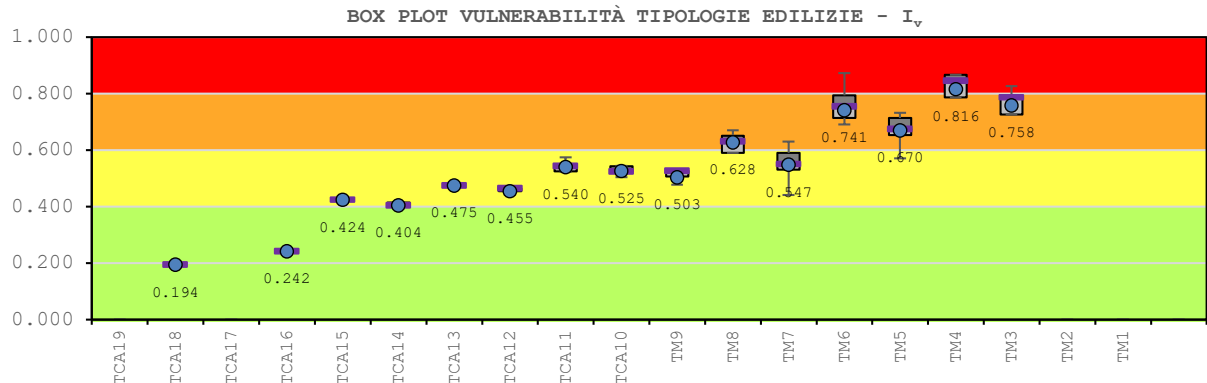
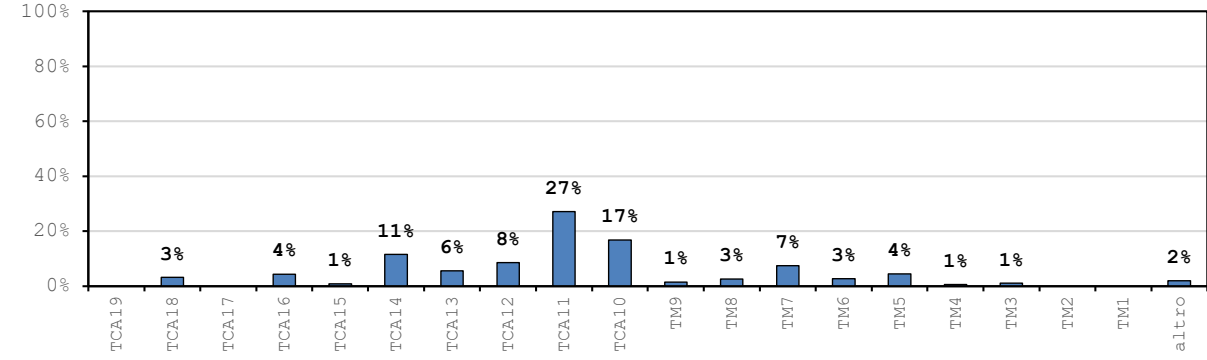
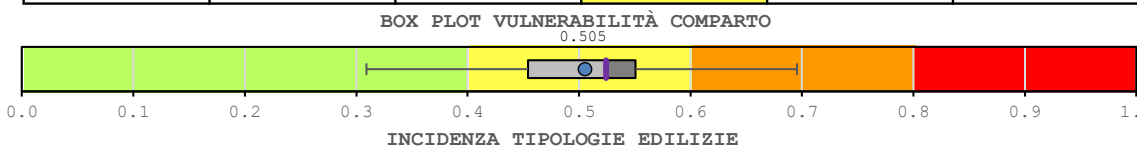


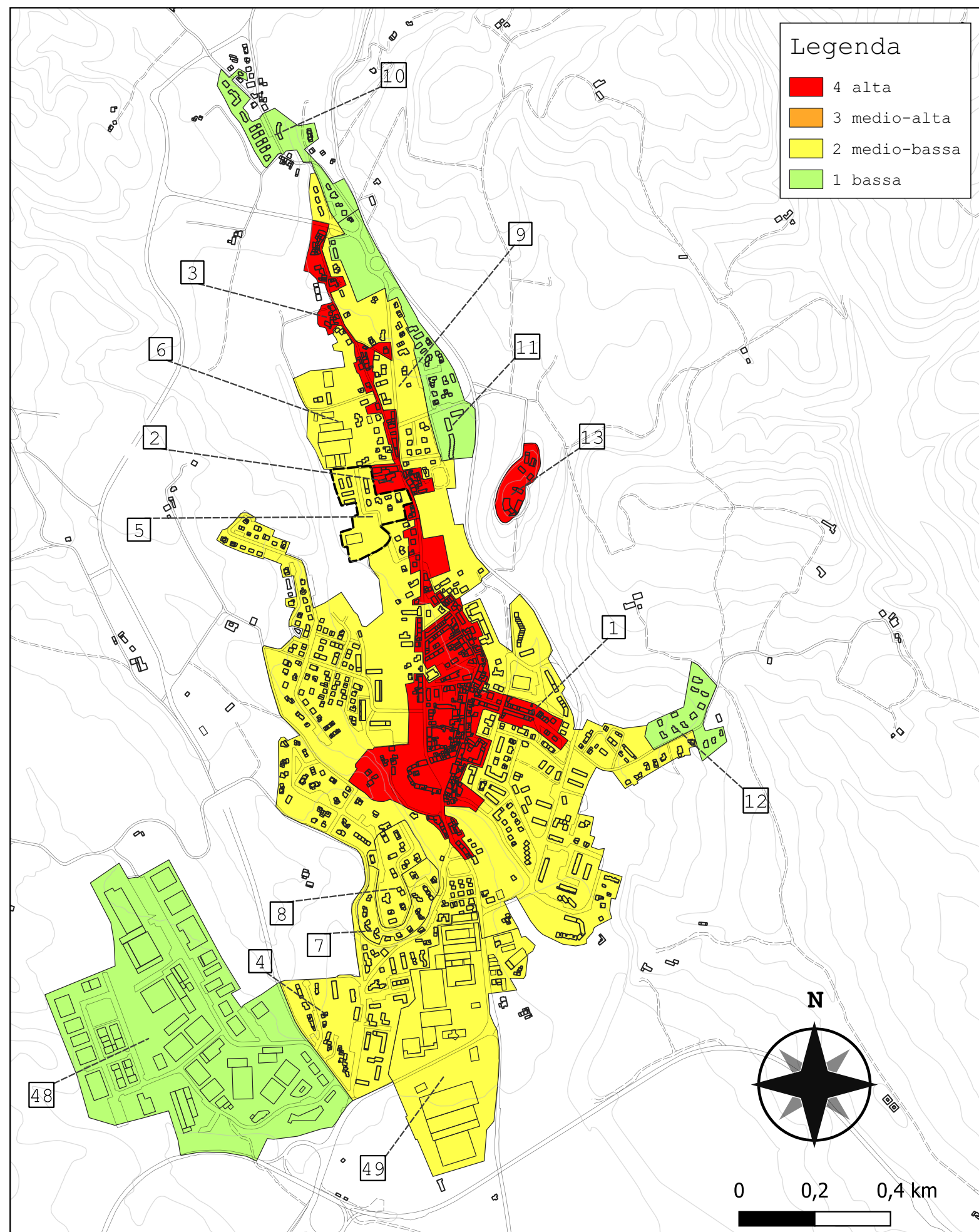


Legenda

- 4 alta
- 3 medio-alta
- 2 medio-bassa
- 1 bassa

Comparto 4		Barberino 2A			
Incidenza vol. comparto a livello comunale 19.6%					
Tipologie	Num. Ed.	Vol. [m ³]	I _{v,medio}	stdev	COV
TM1	-	-	-	-	-
TM2	-	-	-	-	-
TM3	11	6 182	0.758	0.034	0.044
TM4	3	3 707	0.816	0.041	0.050
TM5	54	26 576	0.670	0.038	0.057
TM6	8	15 976	0.741	0.061	0.080
TM7	91	44 876	0.547	0.039	0.071
TM8	14	15 542	0.628	0.027	0.043
TM9	21	8 815	0.503	0.030	0.059
TCA10	141	101 276	0.525	0.014	0.026
TCA11	46	163 287	0.540	0.015	0.029
TCA12	64	50 998	0.455	0.007	0.015
TCA13	9	33 653	0.475	0.008	0.016
TCA14	103	69 011	0.404	0.006	0.015
TCA15	4	5 097	0.424	0.000	0.000
TCA16	17	25 692	0.242	0.000	0.000
TCA17	-	-	-	-	-
TCA18	7	19 278	0.194	0.000	0.000
TCA19	-	-	-	-	-
altro	8	11 815	-	-	-
tot.	601	601 781	0.505	0.114	0.225

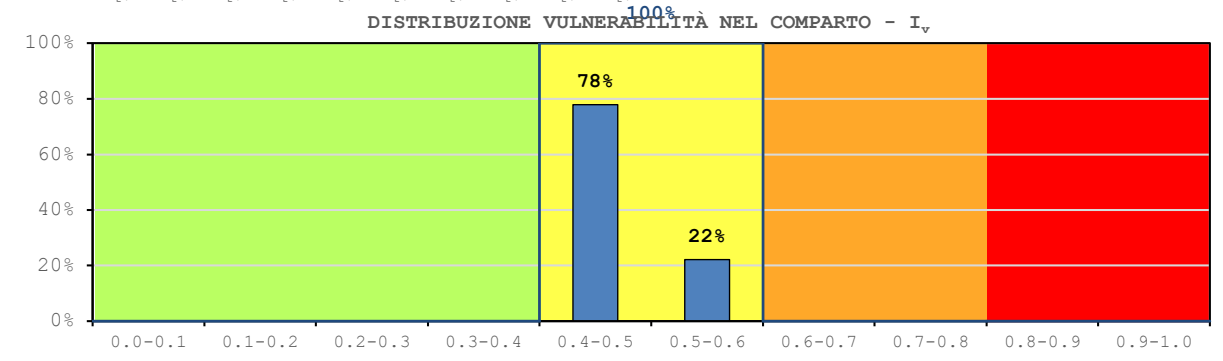
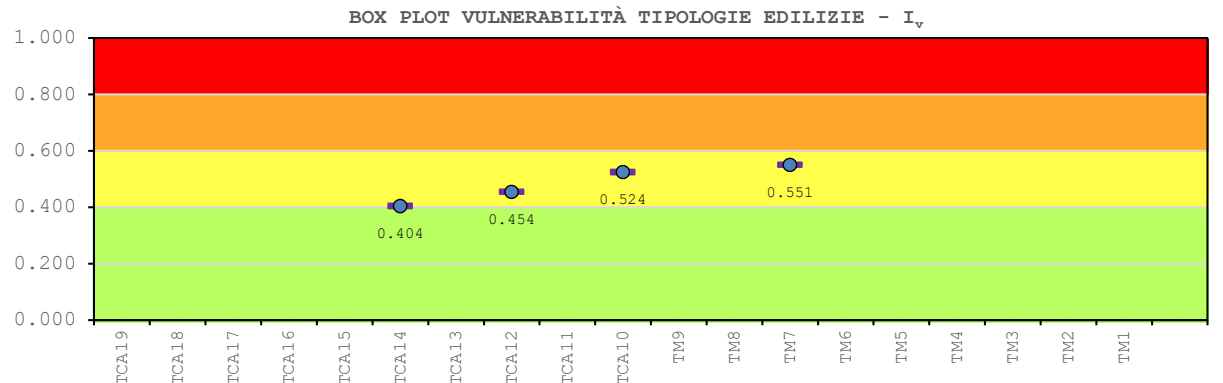
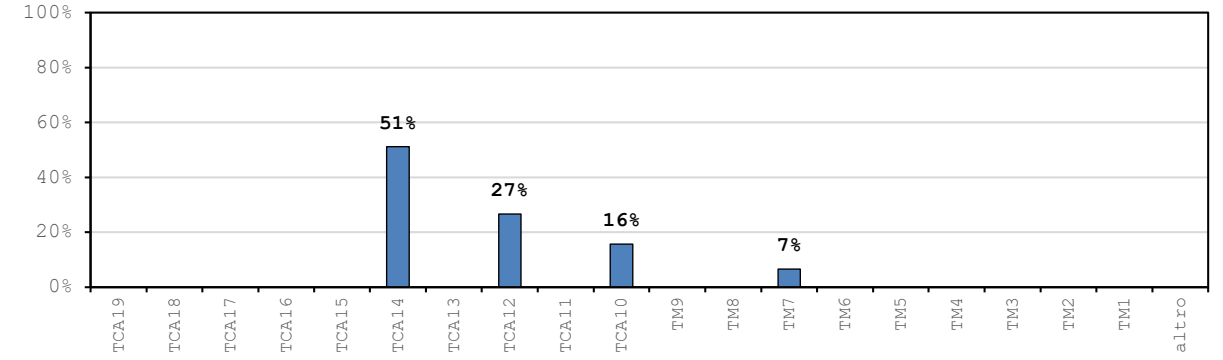
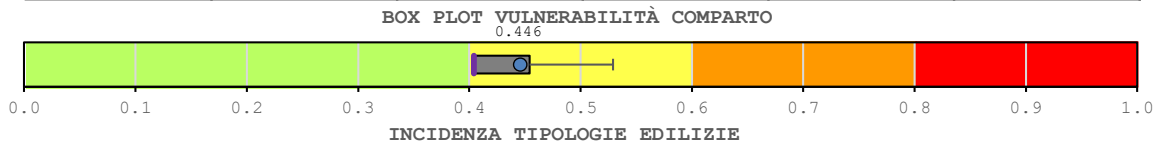


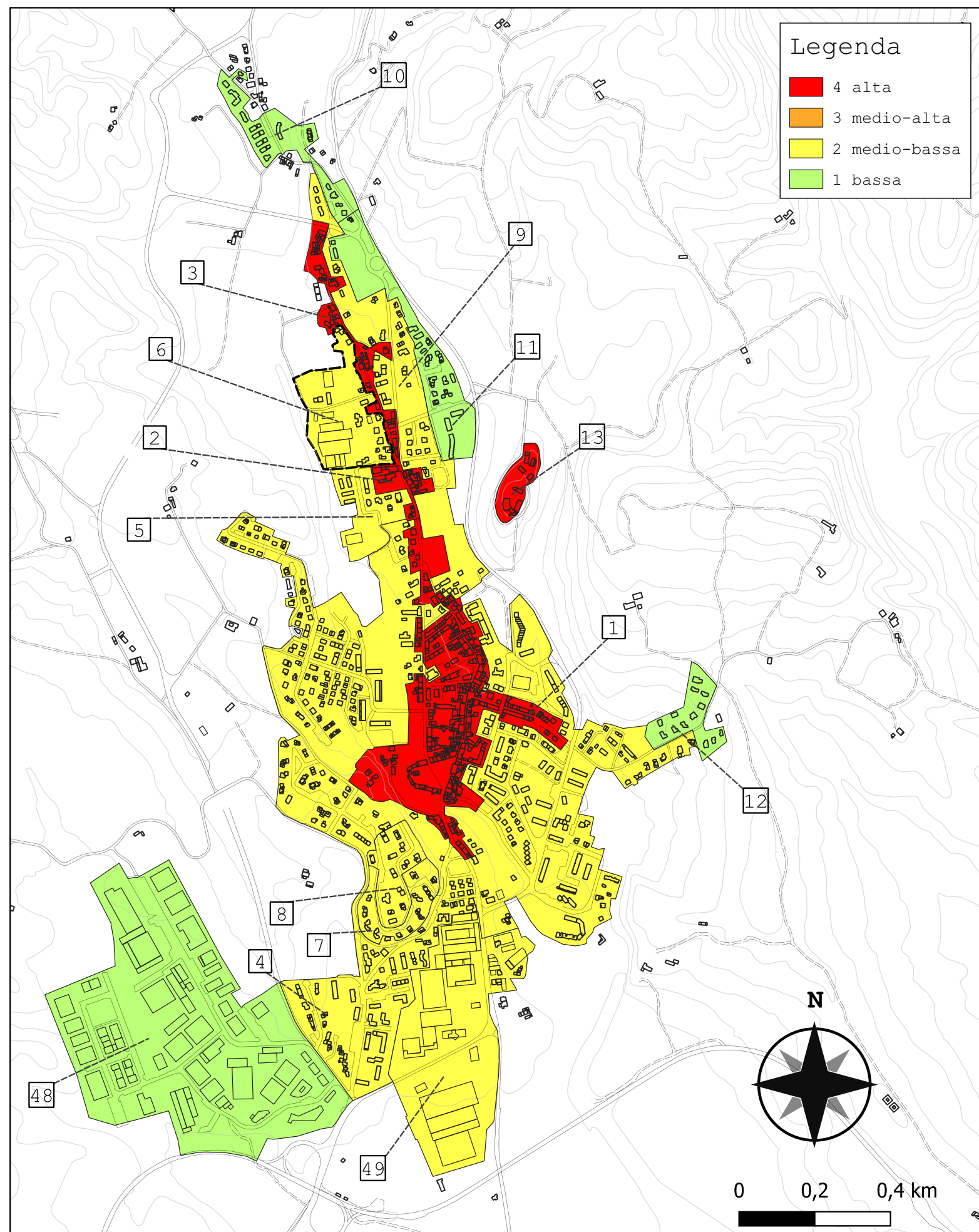


Legenda

- 4 alta
- 3 medio-alta
- 2 medio-bassa
- 1 bassa

Comparto 5		Barberino 2B			
Incidenza vol. comparto a livello comunale 0.5%					
Tipologie	Num. Ed.	Vol. [m ³]	I _{v,medio}	stdev	COV
TM1	-	-	-	-	-
TM2	-	-	-	-	-
TM3	-	-	-	-	-
TM4	-	-	-	-	-
TM5	-	-	-	-	-
TM6	-	-	-	-	-
TM7	1	1 005	0.551	-	-
TM8	-	-	-	-	-
TM9	-	-	-	-	-
TCA10	2	2 386	0.524	0.000	0.000
TCA11	-	-	-	-	-
TCA12	2	4 063	0.454	0.000	0.000
TCA13	-	-	-	-	-
TCA14	9	7 821	0.404	0.000	0.000
TCA15	-	-	-	-	-
TCA16	-	-	-	-	-
TCA17	-	-	-	-	-
TCA18	-	-	-	-	-
TCA19	-	-	-	-	-
altro	0	0	-	-	-
tot.	14	15 275	0.446	0.054	0.122

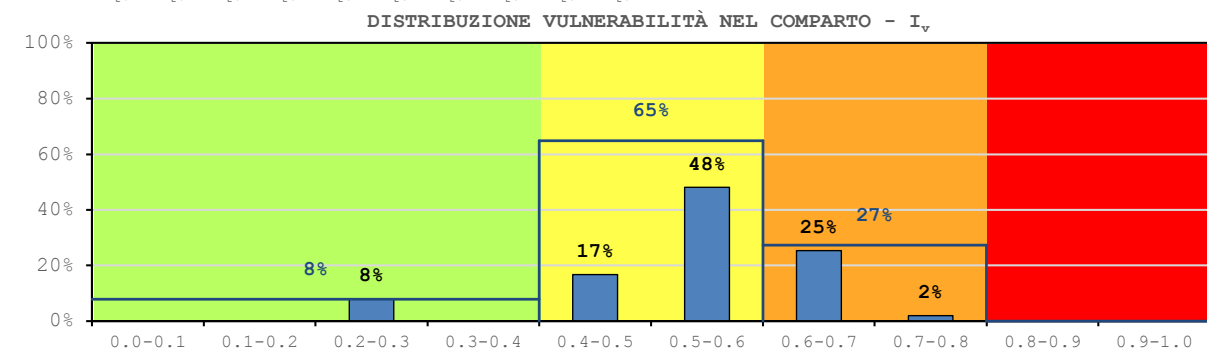
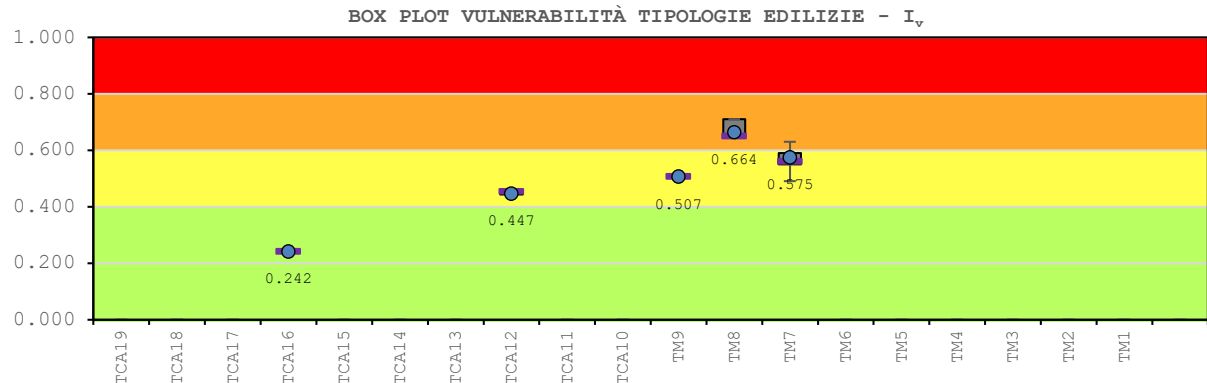
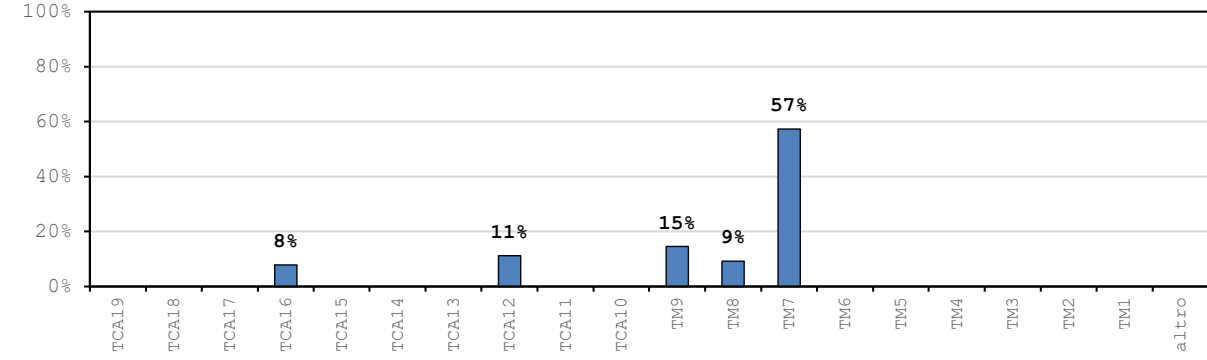
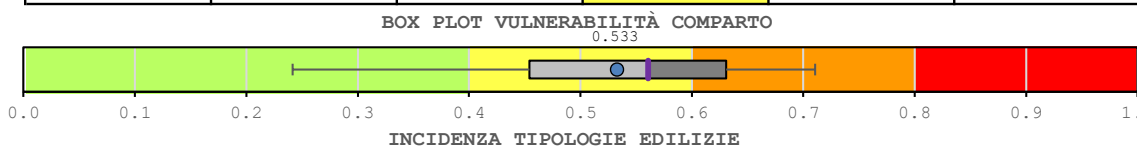


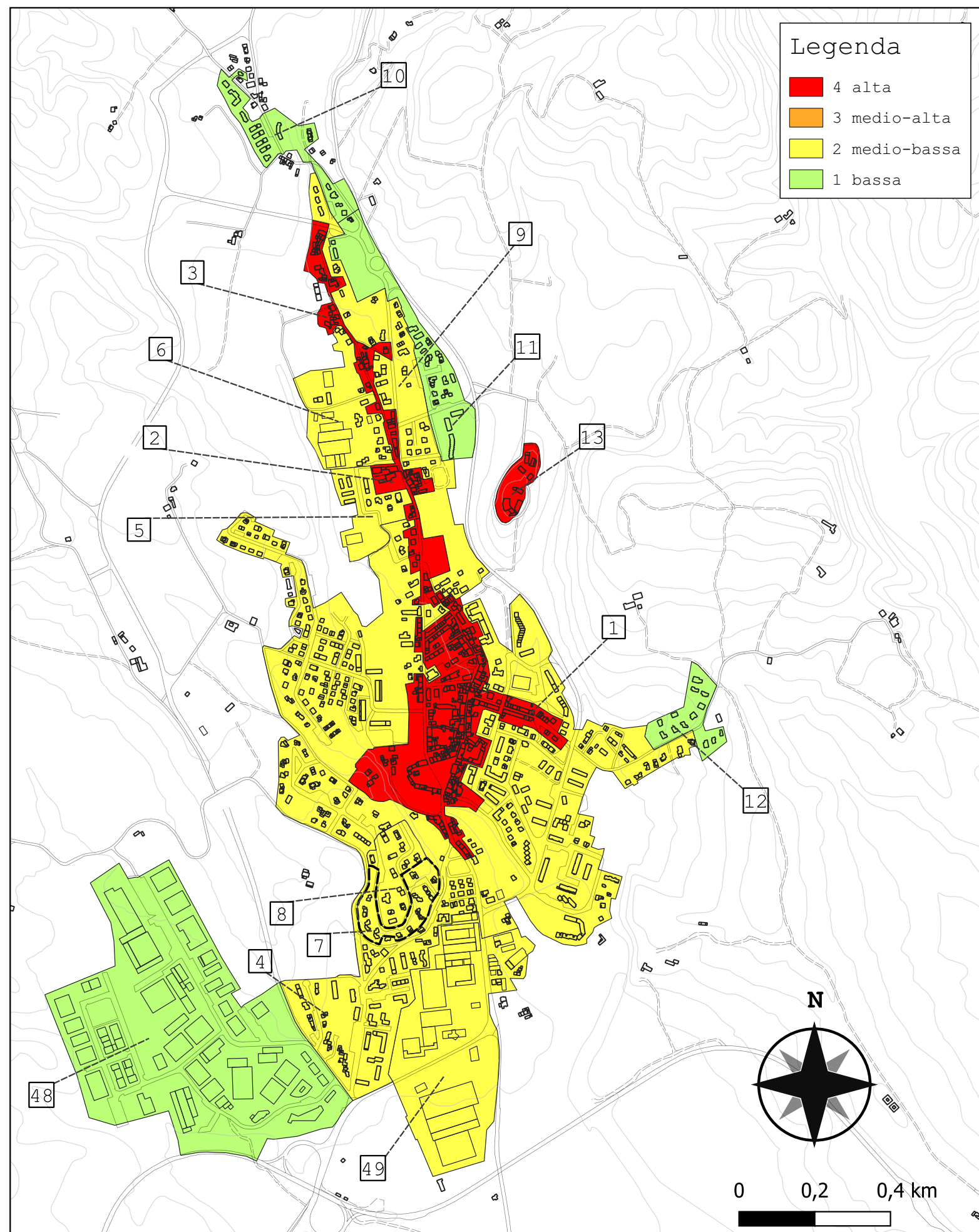


Legenda

- 4 alta
- 3 medio-alta
- 2 medio-bassa
- 1 bassa

Comparto 6		Barberino 2C			
Incidenza vol. comparto a livello comunale 0.6%					
Tipologie	Num. Ed.	Vol. [m ³]	I _{v,medio}	stdev	COV
TM1	-	-	-	-	-
TM2	-	-	-	-	-
TM3	-	-	-	-	-
TM4	-	-	-	-	-
TM5	-	-	-	-	-
TM6	-	-	-	-	-
TM7	14	9 790	0.575	0.040	0.071
TM8	3	1 577	0.664	0.035	0.052
TM9	1	2 479	0.507	-	-
TCA10	-	-	-	-	-
TCA11	-	-	-	-	-
TCA12	3	1 898	0.447	0.006	0.013
TCA13	-	-	-	-	-
TCA14	-	-	-	-	-
TCA15	-	-	-	-	-
TCA16	3	1 342	0.242	0.000	0.000
TCA17	-	-	-	-	-
TCA18	-	-	-	-	-
TCA19	-	-	-	-	-
altro	0	0	-	-	-
tot.	24	17 086	0.533	0.128	0.240

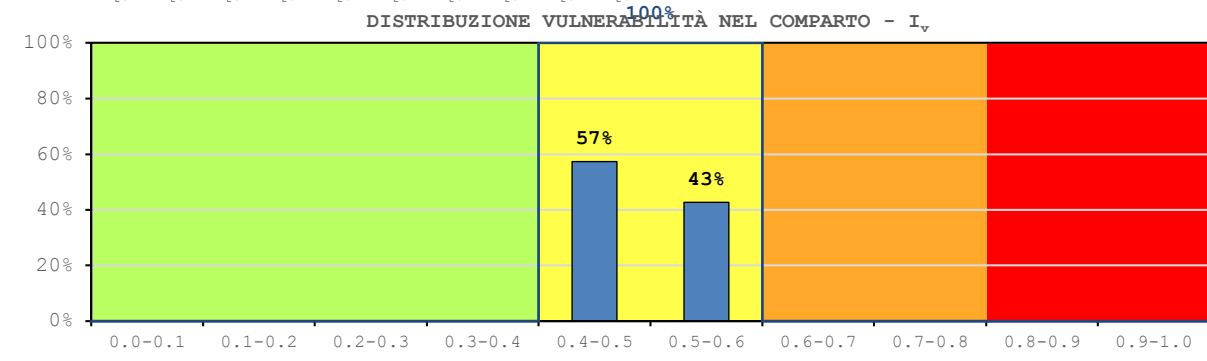
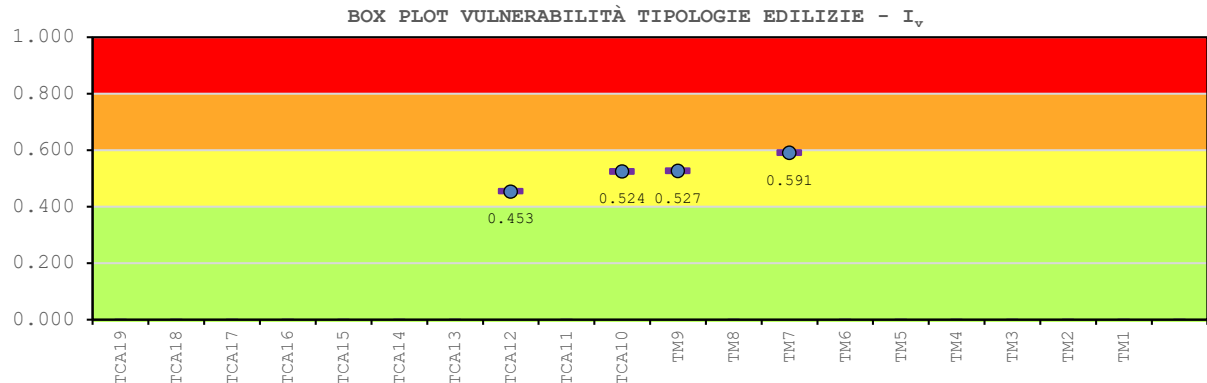
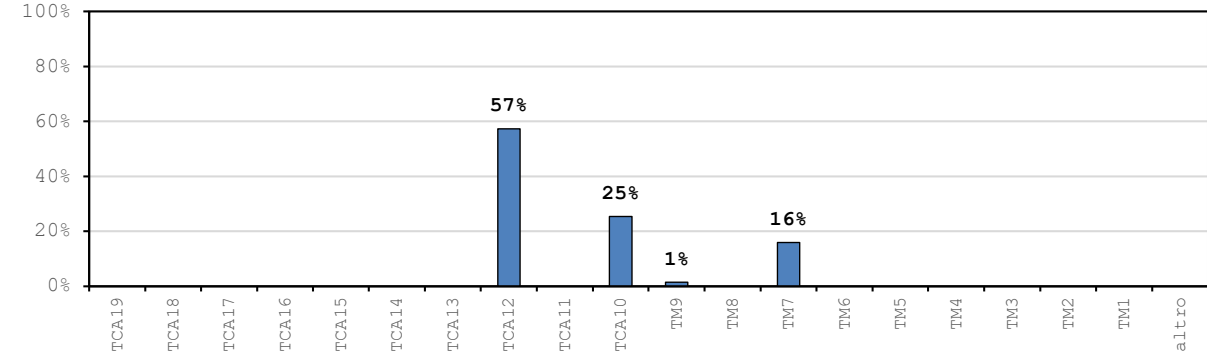
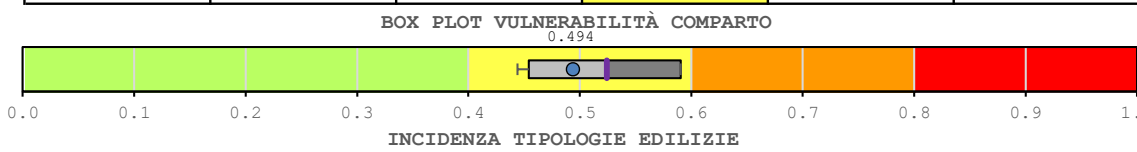


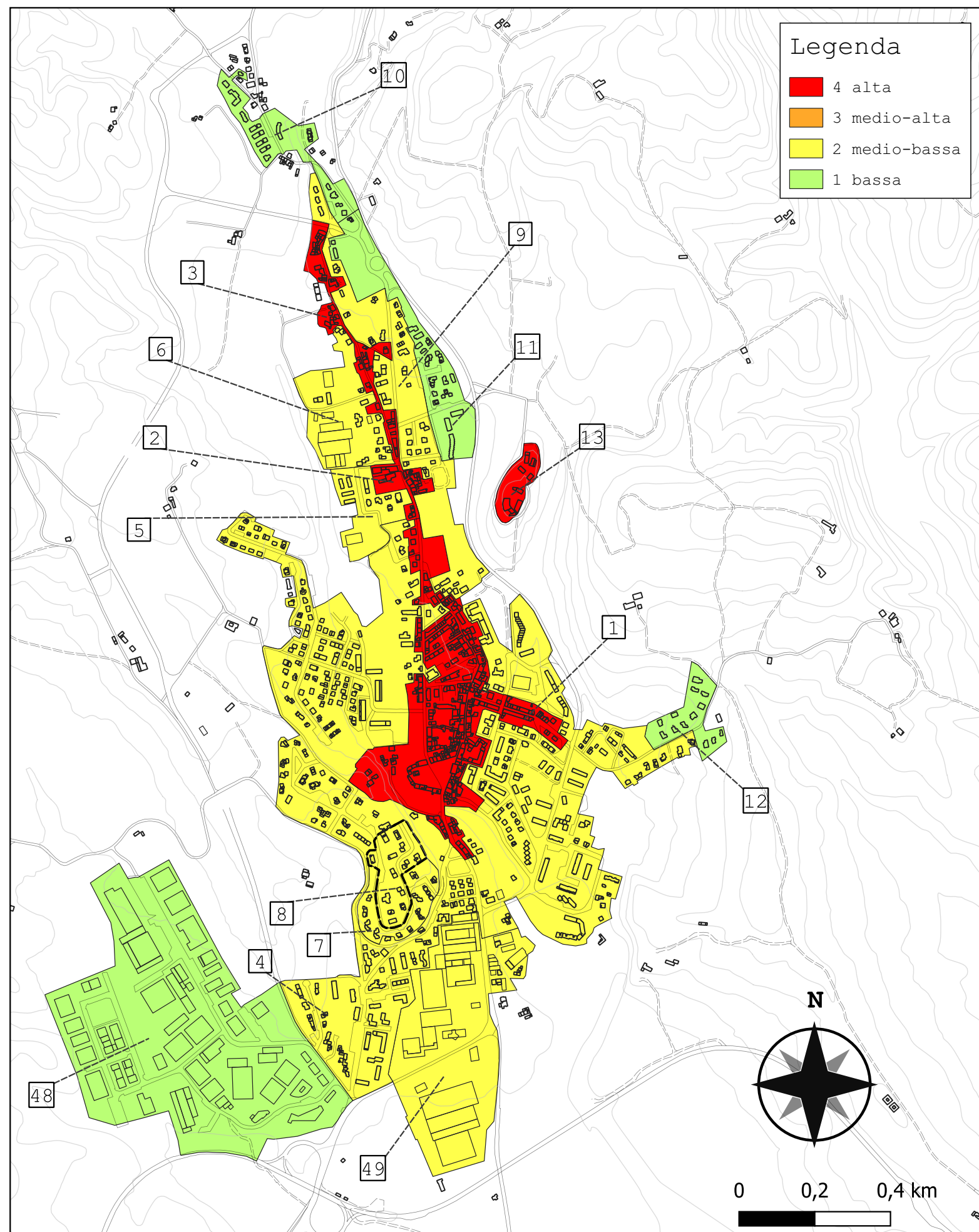


Legenda

- 4 alta
- 3 medio-alta
- 2 medio-bassa
- 1 bassa

Comparto 7		Barberino 2D			
Incidenza vol. comparto a livello comunale 0.6%					
Tipologie	Num. Ed.	Vol. [m ³]	I _{v,medio}	stdev	COV
TM1	-	-	-	-	-
TM2	-	-	-	-	-
TM3	-	-	-	-	-
TM4	-	-	-	-	-
TM5	-	-	-	-	-
TM6	-	-	-	-	-
TM7	11	3 091	0.591	0.000	0.000
TM8	-	-	-	-	-
TM9	2	273	0.527	0.000	0.000
TCA10	10	4 951	0.524	0.000	0.000
TCA11	-	-	-	-	-
TCA12	16	11 158	0.453	0.004	0.009
TCA13	-	-	-	-	-
TCA14	-	-	-	-	-
TCA15	-	-	-	-	-
TCA16	-	-	-	-	-
TCA17	-	-	-	-	-
TCA18	-	-	-	-	-
TCA19	-	-	-	-	-
altro	0	0	-	-	-
tot.	39	19 473	0.494	0.058	0.117

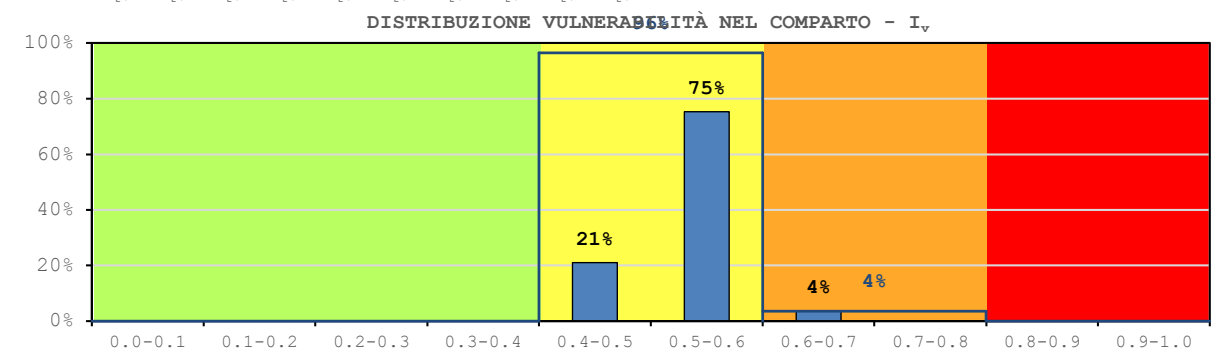
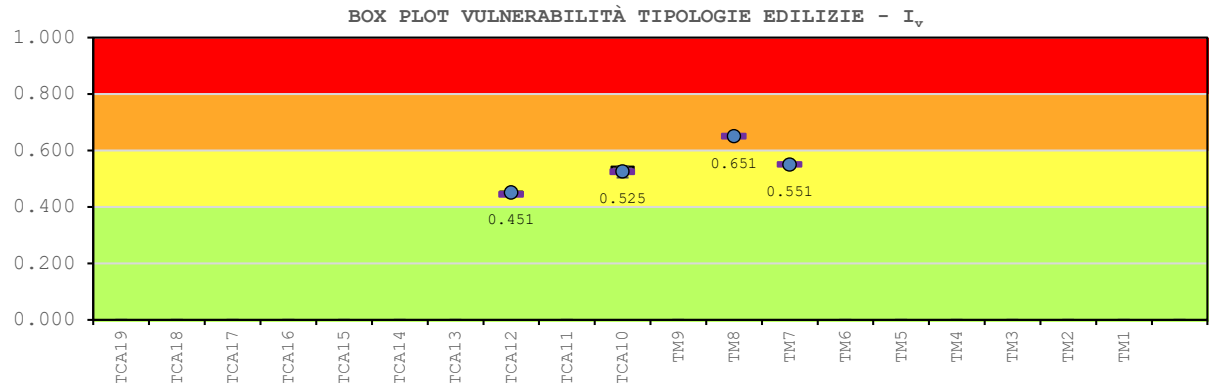
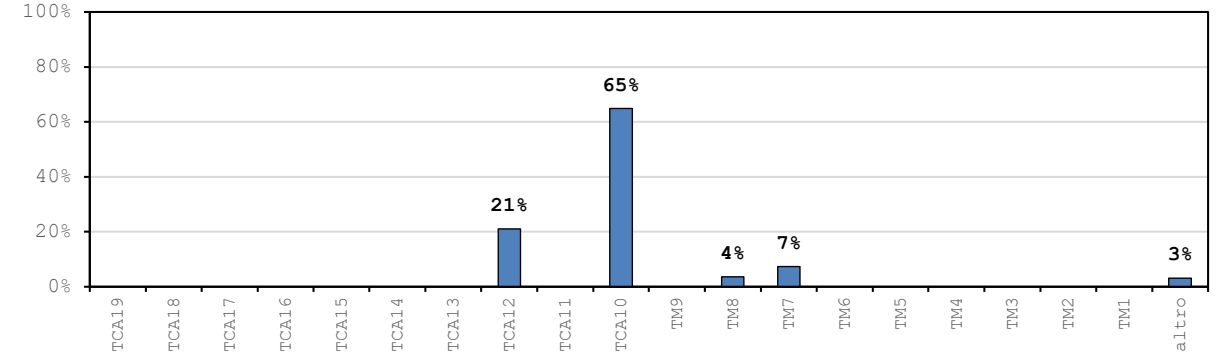
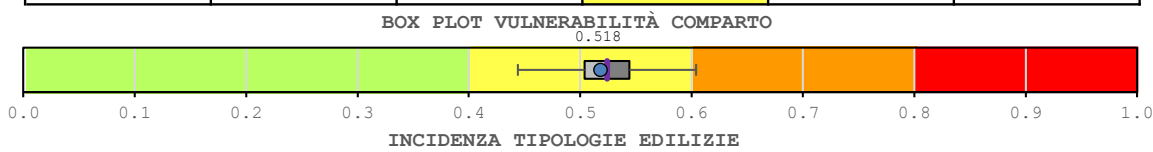


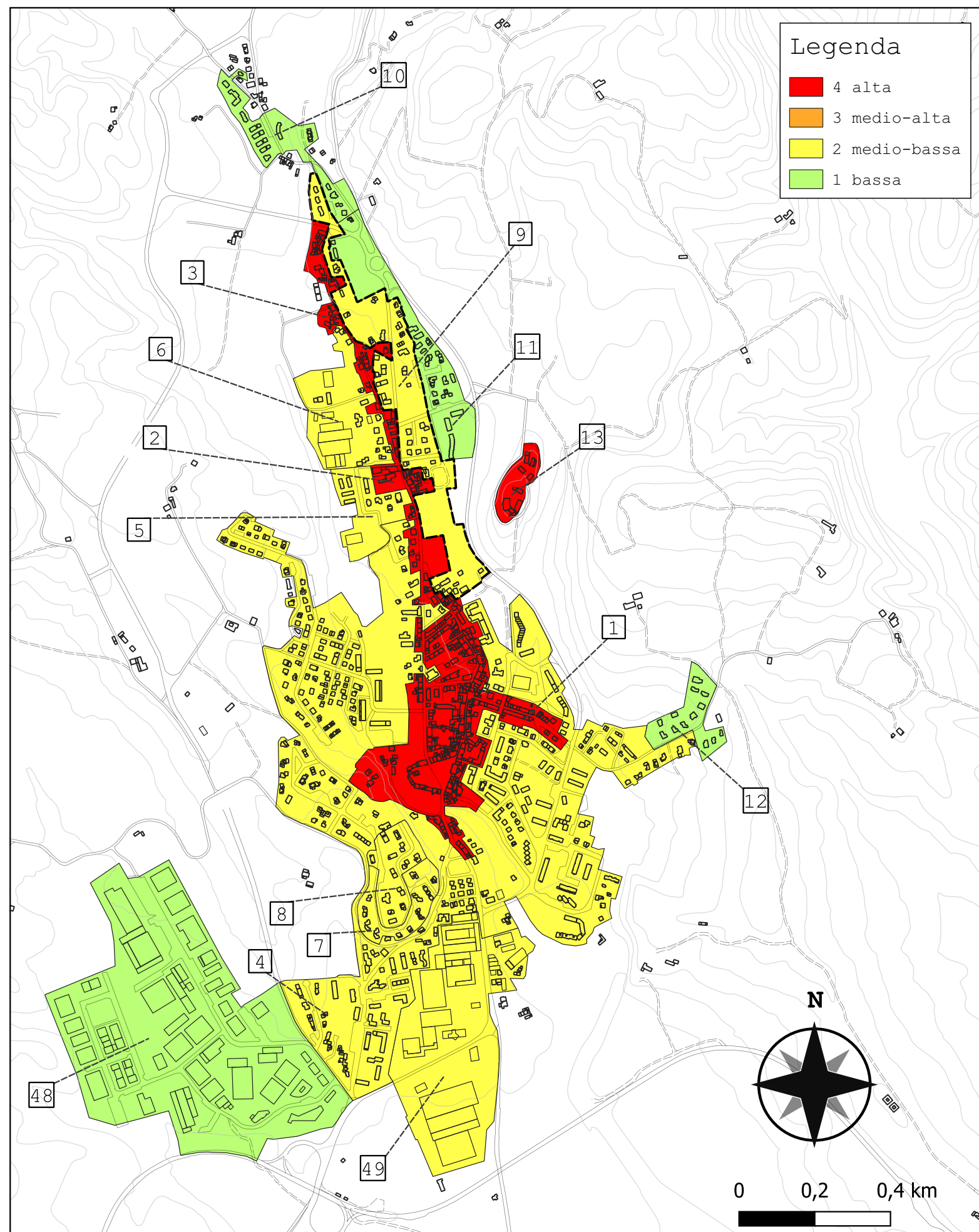


Legenda

- 4 alta
- 3 medio-alta
- 2 medio-bassa
- 1 bassa

Comparto 8		Barberino 2E			
Incidenza vol. comparto a livello comunale 0.7%					
Tipologie	Num. Ed.	Vol. [m ³]	I _{v,medio}	stdev	COV
TM1	-	-	-	-	-
TM2	-	-	-	-	-
TM3	-	-	-	-	-
TM4	-	-	-	-	-
TM5	-	-	-	-	-
TM6	-	-	-	-	-
TM7	2	1 576	0.551	0.000	0.000
TM8	1	761	0.651	-	-
TM9	-	-	-	-	-
TCA10	25	13 883	0.525	0.015	0.028
TCA11	-	-	-	-	-
TCA12	2	4 504	0.451	0.007	0.016
TCA13	-	-	-	-	-
TCA14	-	-	-	-	-
TCA15	-	-	-	-	-
TCA16	-	-	-	-	-
TCA17	-	-	-	-	-
TCA18	-	-	-	-	-
TCA19	-	-	-	-	-
altro	1	661	-	-	-
tot.	31	21 384	0.518	0.035	0.068





Legenda

- 4 alta
- 3 medio-alta
- 2 medio-bassa
- 1 bassa

Comparto 9		Barberino 3			
Incidenza vol. comparto a livello comunale 1.8%					
Tipologie	Num. Ed.	Vol. [m ³]	I _{v,medio}	stdev	COV
TM1	-	-	-	-	-
TM2	-	-	-	-	-
TM3	-	-	-	-	-
TM4	-	-	-	-	-
TM5	2	549	0.754	0.000	0.000
TM6	-	-	-	-	-
TM7	20	17 238	0.551	0.059	0.106
TM8	5	7 920	0.622	0.040	0.066
TM9	8	1 931	0.501	0.010	0.021
TCA10	5	6 273	0.524	0.017	0.032
TCA11	-	-	-	-	-
TCA12	10	8 185	0.460	0.006	0.014
TCA13	2	2 098	0.474	0.000	0.000
TCA14	10	5 547	0.407	0.005	0.012
TCA15	-	-	-	-	-
TCA16	1	739	0.242	-	-
TCA17	-	-	-	-	-
TCA18	2	1 953	0.194	0.000	0.000
TCA19	-	-	-	-	-
altro	4	2 626	-	-	-
tot.	69	55 058	0.513	0.103	0.201

